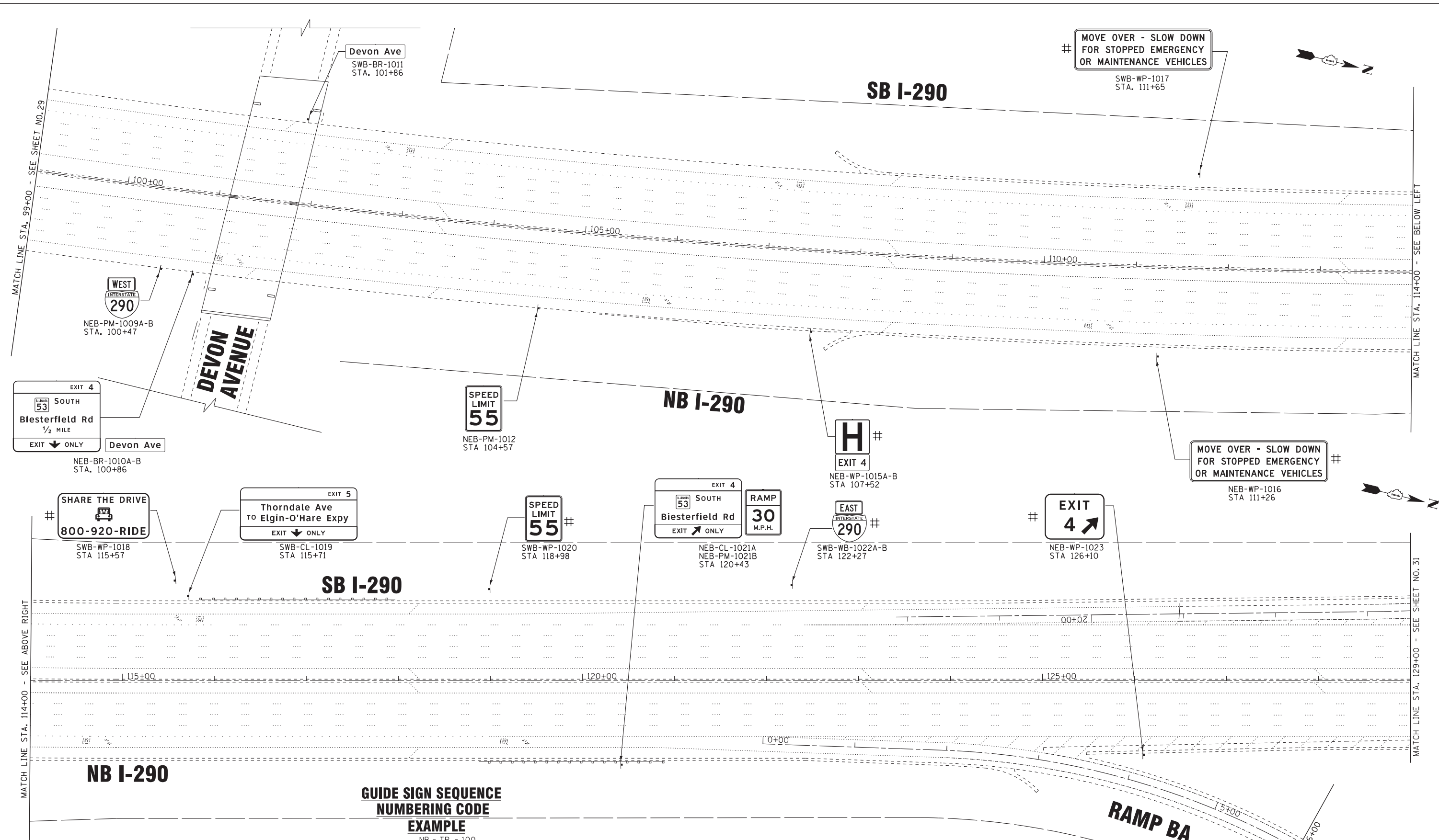


COPYRIGHT 2009, BY BAXTER & WOODMAN, INC. ...Standalone\p12\dr\... \40-Design\WP-27 IL-53 Signing\CADD-SURVEY\DRAWINGS\00053-WO-27-SOUTH-SHT-FLN.dgn
 STATE OF ILLINOIS PROFESSIONAL DESIGN FIRM
 23UKB
 1462/FM3/7/2003/...



**GUIDE SIGN SEQUENCE
NUMBERING CODE
EXAMPLE**

DIRECTION OF TRAFFIC		SIGN PANEL NUMBER	
NB - NORTHBOUND I-290 (I-53)	EFR - E FRONTAGE ROAD	NB - TR - 100	CL - CANTILEVER
SB - SOUTHBOUND I-290 (I-53)	WOD - WOODFIELD ROAD		TS - TELESCOPING STEEL POST
TR - RAMP AA - JH	WFR - W FRONTAGE ROAD		WP - WOOD POST
THR - THORNDALE AVENUE	GLF - GOLF ROAD (IL RT 58)		MP - METAL POST
ROH - ROHLWING ROAD	ALG - ALGONQUIN ROAD (IL RTE 62)		PM - POLE MOUNTED
BIE - BIESTERFIELD ROAD	KIR - KIRCHOFF ROAD		GM - GROUND MOUNTED
HIG - HIGGINS ROAD (IL RT 72)	HIC - HICKS ROAD		



USER NAME = 23lukb	DESIGNED - DJS	REVISED -
DRAWN - UKB	REVISIONS -	
PLOT SCALE = 50.0000' / in.	CHECKED - RWL	REVISED -
PLOT DATE = 3/7/2012	DATE - 12-13-11	REVISED -

**STATE OF ILLINOIS
DEPARTMENT OF TRANSPORTATION**

**I-290 (IL-53)
THORNDALE ROAD TO US 12 (RAND ROAD)**

SCALE: 1"=50' SHEET NO. OF SHEETS STA. 99+00 TO STA. 129+00

F.A.I. RTE.	SECTION	COUNTY	TOTAL SHEETS	SHEET NO.
	2011-024-SG	DUPAGE/COOK	132	30
CONTRACT NO. 60P24			FED. ROAD DIST. NO. 1 ILLINOIS FED. AID PROJECT	

*F.A.I. 290 (INTERSTATE 290)
*F.A.U. 342 (IL ROUTE 53)