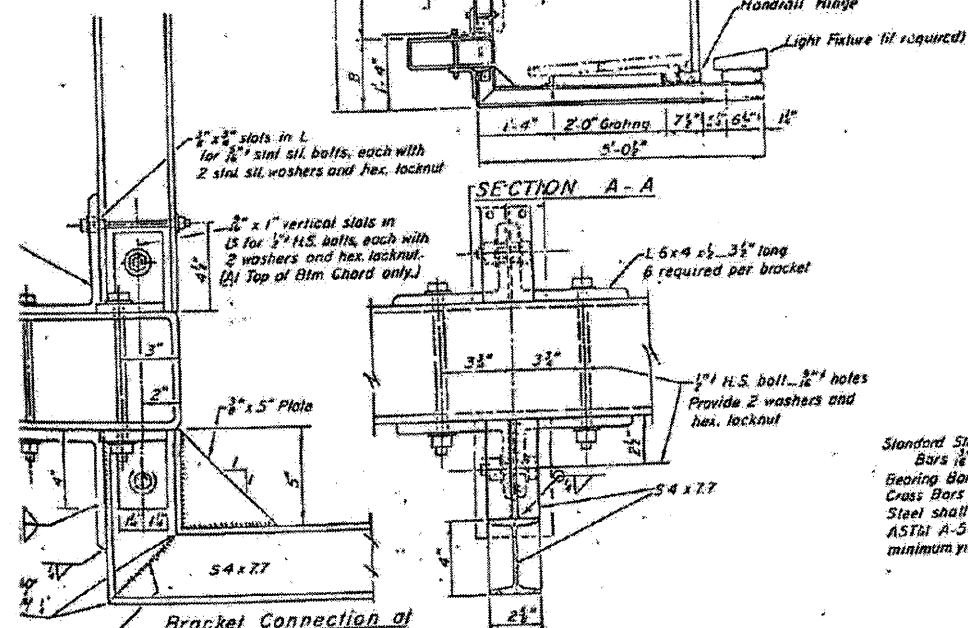
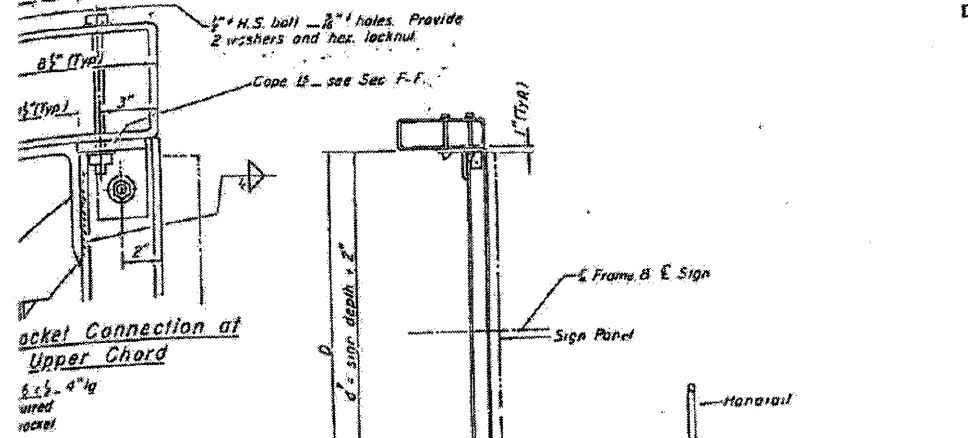
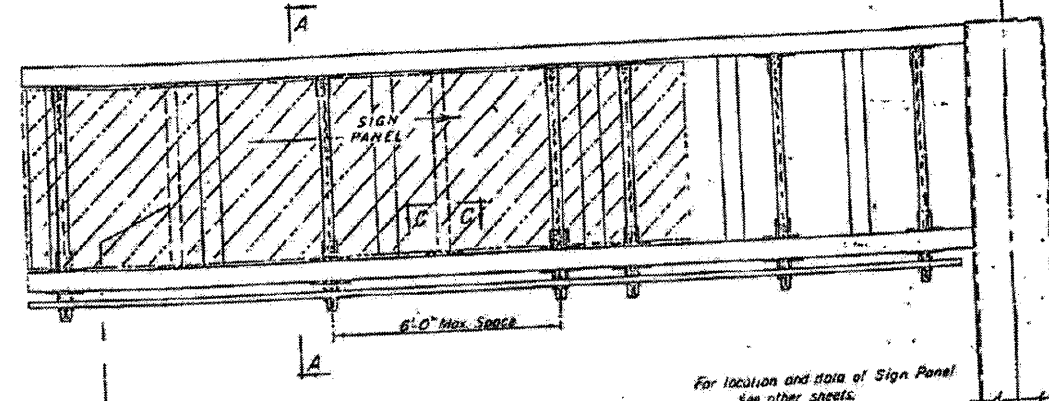


STATE OF ILLINOIS
DEPARTMENT OF TRANSPORTATION

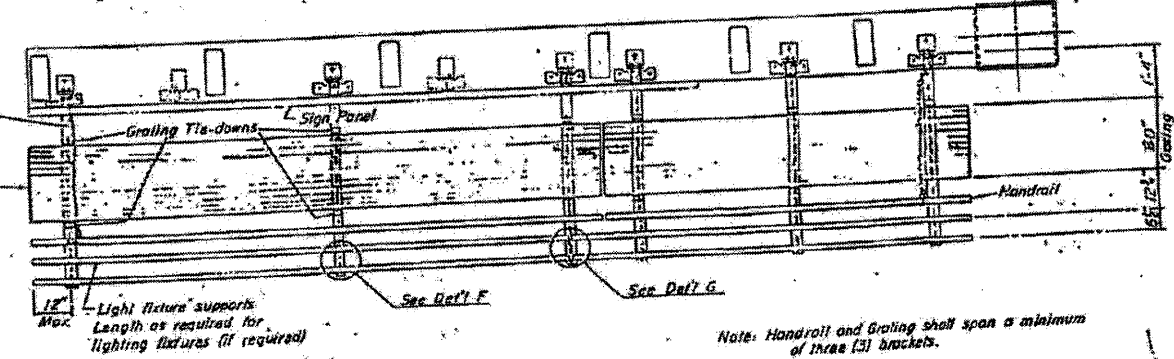
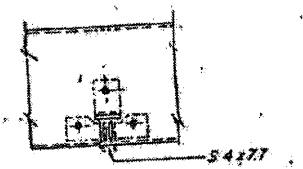
DATE	APP'D	BY
7/21/11	[Signature]	[Signature]



NOTE: Walkway brackets shall conform to requirements of AASHTO M-183

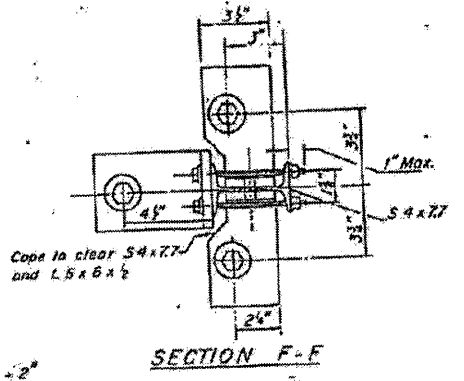


5/4 x 7/7
AASHTO M-183 Steel
Sign width - 0'-10" incl. - 2 req'd
10'-16" incl. - 3 req'd
16'-22" incl. - 4 req'd
22'-28" incl. - 5 req'd



Standard Steel Grating
Bars 1/2" x 1 1/2"
Beaming Bars 1 1/2" oc.
Cross Bars 4" oc.
Steel shall conform to
ASTM A-569 with a
minimum yield of 30,000 psi

Structure Number	Sta. + 0.00	B	D	q
CAN-1	251+00 NB	1'-3"	13'-5"	12'-2"
C-2-3	197+00 SB	1'-3"	13'-5"	12'-2"
C-3-4	167+00 SB	1'-3"	13'-5"	12'-2"



OVERHEAD SIGN STRUCTURES - CANTILEVER
STEEL WALKWAY DETAILS

FOR INFORMATION ONLY

COPYRIGHT © 2008 BY BAXTER & WOODMAN, INC. ALL RIGHTS RESERVED. NO. 184-000121 - EXPIRES 4/30/2018
 DRAWING NO. 2011-024-SG
 DATE: 3/22/2012
 PROJECT: I-290/342 OVERHEAD SIGN STRUCTURES - CANTILEVER STEEL WALKWAY DETAILS



USER NAME = 231ukb	DESIGNED - DJS	REVISED -
PLOT SCALE = 1:8000 1/4" = 1'	DRAWN - UKB	REVISED -
PLOT DATE = 3/22/2012	CHECKED - RWL	REVISED -
	DATE - 12-13-11	REVISED -

STATE OF ILLINOIS
DEPARTMENT OF TRANSPORTATION

EXISTING CANTILEVER PLANS
FOR INFORMATION ONLY

SCALE: SHEET NO. 3 OF 5 SHEETS STA. TO STA.

F.A.I. RTE.	SECTION	COUNTY	TOTAL SHEETS	SHEET NO.
	2011-024-SG		132	132L
FED. ROAD DIST. NO. 1 ILLINOIS FED. AID PROJECT			CONTRACT NO. 60P24	

*F.A.I. 290 (INTERSTATE 290)
*F.A.U. 342 (IL ROUTE 53)