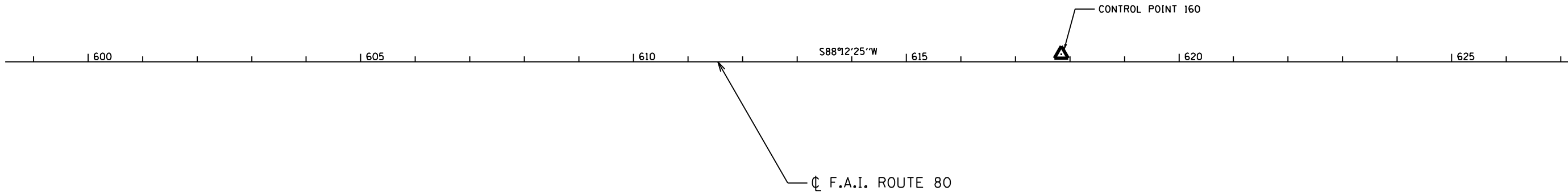
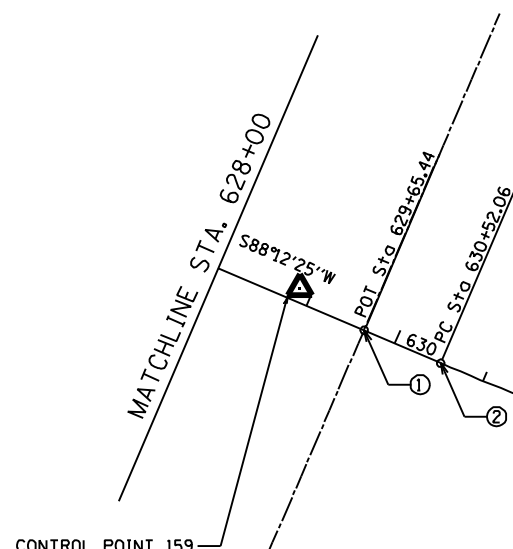
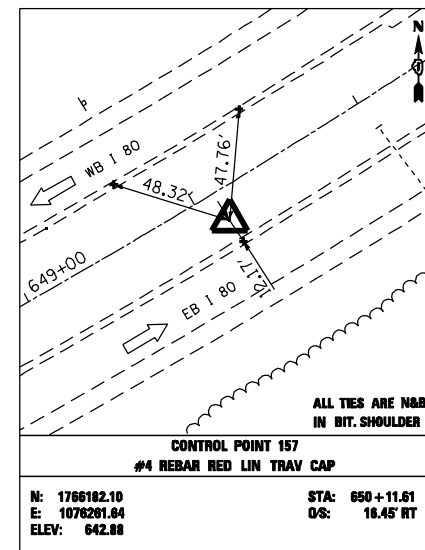
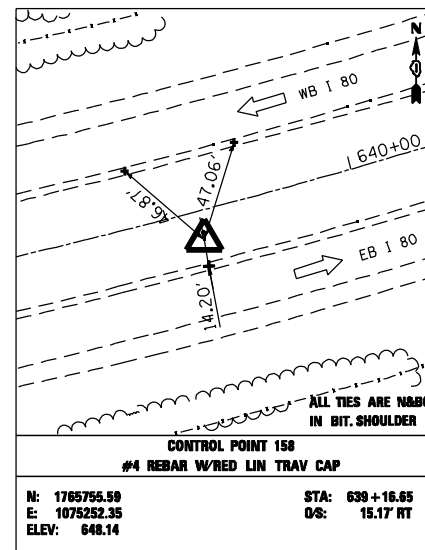
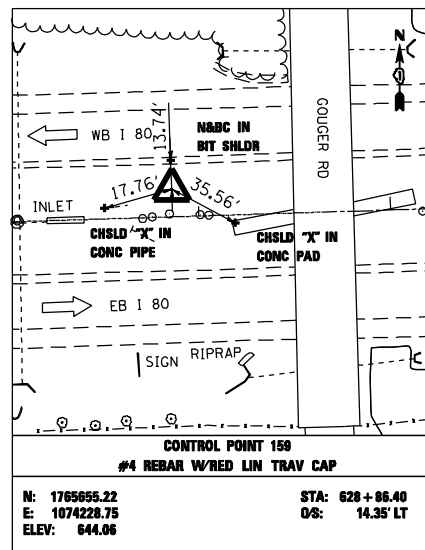
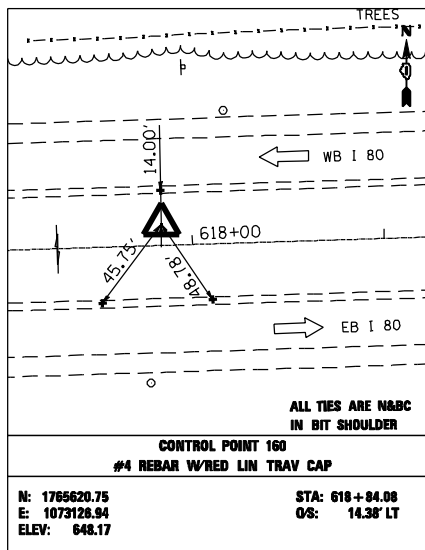


| BM#  | DESCRIPTION  | ELEVATION |
|------|--|-----------|
| BM55 | CHISELED SQUARE ON NORTHERLY SIDE OF CONCRETE FOUNDATION TO SIGN THAT READS "NEW LENOX EXIT 137" ON SOUTH SIDE I-80 APPROX 800' WEST OF GOUGER RD BRIDGE | 647.05    |
| BM54 | CHISELED SQUARE ON CONCRETE SLAB AROUND MEDIAN PIER FOR GOUGER RD BRIDGE ON SW CORNER OF SLAB WEST SIDE OF BRIDGE  | 644.02    |
| BM53 | CHISELED SQUARE ON STEEL FOUNDATION TO MEDIAN POLE WITH SOLAR PANEL ON IT  | 646.31    |



MATCHLINE STA. 628+00



| NUMBER | LOCATION | DESCRIPTION    | STATION   | NORTHING    | EASTING     |
|--------|----------|----------------|-----------|-------------|-------------|
| 1      | FAI - 80 | P.O.T. STATION | 629+65.44 | 1765643.340 | 1074308.178 |
| 2      | FAI - 80 | P.C. STATION   | 630+52.06 | 1765646.051 | 1074394.757 |
| 3      | RAMP AD  | P.T. STATION   | 40+92.99  | 1766091.007 | 1075957.639 |

**CURVE DATA - F.A.I. ROUTE 80**

| Curve              | PI STA.   | Delta            | D          | R         | T         | L         | E         | P.C. STA  | P.T. STA  |
|--------------------|-----------|------------------|------------|-----------|-----------|-----------|-----------|-----------|-----------|
| CURVE E-180-1      | 660+41.68 | 76° 06' 07" (LT) | 1° 30' 00" | 3,819.53' | 2,989.62' | 5,073.21' | 1,030.89' | 630+52.06 | 681+25.27 |
| PROP. CURVE PRAD-3 | 34+80.59  | 18° 50' 18" (RT) | 1° 31' 27" | 3,759.45' | 623.66'   | 1,236.06' | 51.38'    | 28+56.93  | 40+92.99  |

m:\proj\10803384.dwg\10803384.dwg\design\proposed\plan\3284\_e\_0538\_high\_mast\_05-align\1res01.dwg



|                            |                   |           |
|----------------------------|-------------------|-----------|
| USER NAME = jvandra        | DESIGNED - NT     | REVISED - |
| DRAWN - NT                 | CHECKED - JMV     | REVISED - |
| PLT SCALE = 200.0000 / IN. | DATE - 02-14-2012 | REVISED - |
| PLT DATE = 2/13/2012       |                   |           |

**STATE OF ILLINOIS  
DEPARTMENT OF TRANSPORTATION**

**F.A.I. ROUTE 80 AT U.S. ROUTE 30 LIGHTING  
ALIGNMENTS, TIES, AND BENCHMARKS**

SCALE: 1" = 100' SHEET NO. OF SHEETS STA. TO STA.

| F.A.I. RTE. | SECTION    | COUNTY | TOTAL SHEETS | SHEET NO. |
|-------------|------------|--------|--------------|-----------|
| 80          | 2011-046-L | WILL   | 106          | 10        |

CONTRACT NO. 60P56  
ILLINOIS FED. AID PROJECT