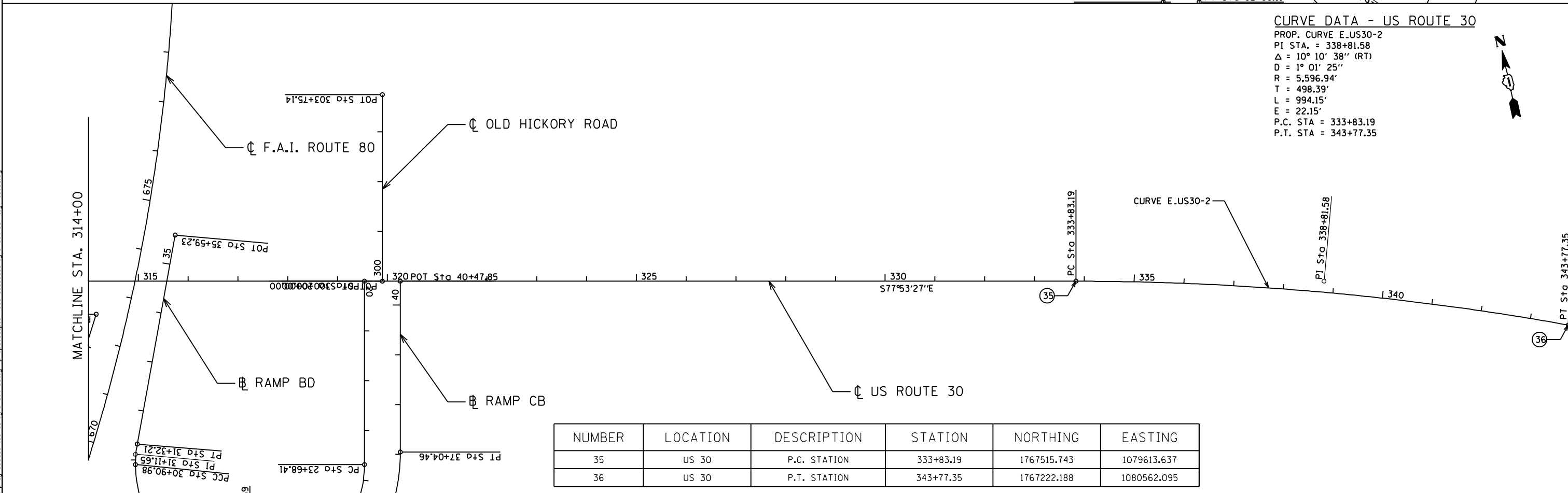


CURVE DATA US ROUTE 30

PROP. CURVE E.US30-1
 PI STA. = 295+69.81
 $\Delta = 15^\circ 30' 16''$ (LT)
 D = $1^\circ 01' 54''$
 R = 5,552.97'
 T = 755.94'
 L = 1,502.64'
 E = 51.22'
 P.C. STA = 288+13.87
 P.T. STA = 303+16.51

NUMBER	LOCATION	DESCRIPTION	STATION	NORTHING	EASTING
33	US 30	P.C. STATION	288+13.87	1768668.011	1075206.238
34	US 30	P.T. STATION	303+16.51	1768159.053	1076615.193



CURVE DATA - US ROUTE 30

PROP. CURVE E.US30-2
 PI STA. = 338+81.58
 $\Delta = 10^\circ 10' 38''$ (RT)
 D = $1^\circ 01' 25''$
 R = 5,596.94'
 T = 498.39'
 L = 994.15'
 E = 22.15'
 P.C. STA = 333+83.19
 P.T. STA = 343+77.35

NUMBER	LOCATION	DESCRIPTION	STATION	NORTHING	EASTING
35	US 30	P.C. STATION	333+83.19	1767515.743	1079613.637
36	US 30	P.T. STATION	343+77.35	1767222.188	1080562.095

<p>Ciorba Group, Inc. CONSULTING ENGINEERS 8007 North Cumberland Avenue, Suite 402 Chicago, Illinois 60638 Tel. 773.778.4008 Fax 773.778.4914 Email: ciorbagroup@ciorba.com</p>	USER NAME = jvandra	DESIGNED - NT	REVISED -	STATE OF ILLINOIS DEPARTMENT OF TRANSPORTATION	F.A.I. ROUTE 80 AT U.S. ROUTE 30 LIGHTING ALIGNMENTS, TIES, AND BENCHMARKS	F.A.I. RTE. = 80	SECTION = 2011-046-L	COUNTY = WILL	TOTAL SHEETS = 106	SHEET NO. = 14		
	PLT SCALE = 200.0000' / IN.	CHECKED - JMV	REVISED -			SCALE: 1" = 100'	SHEET NO. OF SHEETS	STA. TO STA.	CONTRACT NO. 60P56			
	PLT DATE = 2/13/2012	DATE = 02-14-2012	REVISED -			ILLINOIS FED. AID PROJECT						