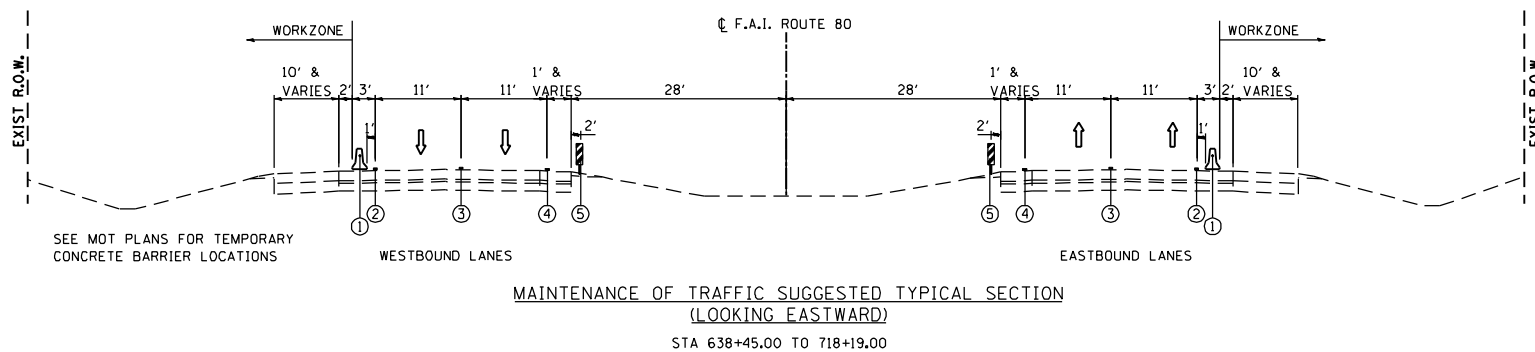


STAGING AND TRAFFIC CONTROL GENERAL NOTES

1. THE STAGING AND TRAFFIC CONTROL PLANS SHALL SERVE AS A GUIDE FOR SAFE MOVEMENT OF TRAFFIC DURING EXECUTION OF THIS CONTRACT. HOWEVER, THE CONTRACTOR MAY IMPROVE OR MODIFY THE STAGING AND TRAFFIC CONTROL PLANS TO MEET CONSTRUCTION NEEDS BUT NOT AT THE EXPENSE OF PUBLIC SAFETY OR CONVENIENCE. ANY CHANGES TO THE MOT PLANS SHALL BE SUBMITTED TO THE ENGINEER FOR APPROVAL.
2. THE ENGINEER SHALL BE INFORMED 21 DAYS IN ADVANCE OF ANY CHANGE TO THE STAGING AND TRAFFIC CONTROL PLANS.
3. TRAFFIC CONDITIONS, ACCIDENTS AND OTHER UNFORESEEN EMERGENCY CONDITIONS MAY REQUIRE THE ENGINEER TO RESTRICT, MODIFY OR REMOVE LANE CLOSURES OR CHANNELIZATIONS SHOWN ON THE PLANS. THE CONTRACTOR SHALL MAKE THE NECESSARY ADJUSTMENTS DIRECTED BY THE ENGINEER WITHOUT DELAY. THE CONTRACTOR SHALL RESPOND WITHIN 30 MINUTES FROM THE TIME OF NOTIFICATION BY THE ENGINEER TO ANY REQUEST MADE BY THE ENGINEER FOR CORRECTION, IMPROVEMENT, OR MODIFICATION OF THE MAINTENANCE OF TRAFFIC CONTROL DEVICES.
4. ALL TRAFFIC CONTROL DEVICES USED FOR TRAFFIC CONTROL AND PROTECTION, AS DETAILED ON THE PLANS, SHALL BE REFLECTORIZED PRIOR TO INSTALLATION AND CLEANED AS SPECIFIED IN TRAFFIC CONTROL AND PROTECTION SPECIAL PROVISIONS OR AS DIRECTED BY THE ENGINEER.
5. THE CONTRACTOR SHALL COVER OR REMOVE ALL CONFLICTING EXISTING SPEED LIMIT SIGNS, GUIDE SIGNS, OR ANY OTHER CONFLICTING SIGNS FOR THE DURATION OF THE CONSTRUCTION. THE CONTRACTOR SHALL SUBMIT THE METHOD IN WHICH THE SIGNS WILL BE COVERED TO THE ENGINEER FOR APPROVAL.
6. LOCATIONS OF CHANGEABLE MESSAGE SIGNS SHALL BE DETERMINED BY THE ENGINEER.
7. PRIOR TO REMOVING TRAFFIC CONTROL AND OPENING CLOSED PAVEMENT AREAS TO TRAFFIC, THE CONTRACTOR SHALL SWEEP THE PAVEMENT SURFACE CLEAN. THIS WORK WILL NOT BE PAID FOR SEPARATELY BUT SHALL BE INCLUDED IN THE CONTRACT UNIT PRICE FOR "TRAFFIC CONTROL AND PROTECTION (EXPRESSWAYS)," OR TC&P (ARTERIALS).
8. THE CONTRACTOR SHALL CONTACT THE EXPRESSWAY TRAFFIC CONTROL SUPERVISOR AT (847)705-4155 AND ARTERIAL TRAFFIC CONTROL SUPERVISOR AT (847) 705-4470 A MINIMUM OF 72 HOURS PRIOR TO BEGINNING WORK OR PLACING ANY SIGNS OR TRAFFIC CONTROL DEVICES ON I-80 AND U.S. ROUTE 30.
9. WEEKDAY CONSTRUCTION ACTIVITY THAT WILL NECESSITATE LANE CLOSURES ON US ROUTE 30 IN ACCORDANCE WITH STANDARD 701601 MUST BE LIMITED TO THE HOURS BETWEEN 9:00 A.M. AND 3:00 P.M. IN ORDER TO AVOID THE PEAK RUSH HOURS.
10. A 3.5 FOOT DEFLECTION ZONE SHALL BE MAINTAINED FROM THE BACK OF THE TEMPORARY CONCRETE BARRIER WALL TO ANY DROP OFFS OR OBSTRUCTIONS. IF A 3.5 FOOT DEFLECTION ZONE CANNOT BE MAINTAINED, THE TEMPORARY CONCRETE BARRIER WALL SHALL BE ANCHORED TO THE PAVEMENT THRU THE 3 ANCHOR HOLES ON THE TRAFFIC SIDE OF THE BARRIER WALL. THIS WORK SHALL NOT BE PAID FOR SEPARATELY, BUT IS INCLUDED IN THE COST OF TEMPORARY CONCRETE BARRIER.

STAGING AND TRAFFIC TYPICAL SECTION
INTERSTATE 80



- LEGEND**
- ① TEMPORARY CONCRETE BARRIER
 - ② PAVEMENT MARKING TAPE, TYPE III 4" (WHITE)
 - ③ WET REFLECTIVE TEMPORARY TAPE, TYPE III 5" (WHITE)
10' DASH 30' SKIP
 - ④ PAVEMENT MARKING TAPE, TYPE III 4" (YELLOW)
 - ⑤ VERTICAL PANELS, 200' C-C

NOTES:

A MINIMUM DISTANCE OF 1 FOOT SHALL BE MAINTAINED BETWEEN THE LANE LINE AND THE TEMPORARY CONCRETE BARRIER THROUGHOUT THE PROJECT.

A MINIMUM DISTANCE OF 1 FOOT SHALL BE MAINTAINED BETWEEN THE LANE LINE AND THE EDGE OF SHOULDER THROUGHOUT THE PROJECT.

STAGING AND TRAFFIC CONTROL DESCRIPTION
PRE-STAGE INTERSTATE 80

CONSTRUCTION:

MILL AND RESURFACE EXISTING RUMBLE STRIPS.

TRAFFIC CONTROL:

WORK IS TO BE PERFORMED DURING NON-PEAK HOURS IN ACCORDANCE WITH STANDARD 701406.

STAGING AND TRAFFIC CONTROL DESCRIPTION
INTERSTATE 80

CONSTRUCTION:

PERFORM GRADING, CONSTRUCT HIGH MAST LIGHT TOWERS AND PERFORM RESTORATION AS SHOWN ON THE PLANS AND AS DIRECTED BY THE ENGINEER.

TRAFFIC CONTROL:

PROVIDE TWO 11' LANES IN EACH DIRECTION WEAVING TRAFFIC TO THE INSIDE SHOULDER, INSIDE TRAVEL LANE, AND OUTSIDE TRAVEL LANE.

TEMPORARY CONCRETE BARRIER SHALL BE UTILIZED TO PROVIDE POSITIVE SEPARATION BETWEEN THE WORK ZONE AND TRAFFIC LANES AS SHOWN IN THE TRAFFIC CONTROL PLANS.

STAGING AND TRAFFIC CONTROL DESCRIPTION
FRONTAGE ROAD

CONSTRUCTION:

PERFORM GRADING, CONSTRUCT HIGH MAST LIGHT TOWERS AND GUARDRAIL; AND PERFORM RESTORATION AS SHOWN ON THE PLANS AND AS DIRECTED BY THE ENGINEER.

TRAFFIC CONTROL:

TRAFFIC CONTROL SHALL BE PERFORMED IN ACCORDANCE WITH STANDARD 701501.

STAGING AND TRAFFIC CONTROL DESCRIPTION
US ROUTE 30

CONSTRUCTION:

PERFORM GRADING, CONSTRUCT HIGH MAST LIGHT TOWERS LIGHT POLES, HOT-MIX ASPHALT SHOULDER, TEMPORARY CONCRETE BARRIER AND IMPACT ATTENUATOR; AND PERFORM RESTORATION AS SHOWN ON THE PLANS AND AS DIRECTED BY THE ENGINEER.

TRAFFIC CONTROL:

TRAFFIC CONTROL SHALL BE PERFORMED IN ACCORDANCE WITH STANDARDS 701101, 701106 AND 701601.

\\svr202\public\p\0002384-006-high-mast\design\MOI\3384_6_US30_High_Mast_MOI_gmnotea01.dgn

<p>Ciorba Group, Inc. CONSULTING ENGINEERS 8607 North Cumberland Avenue, Suite 402 Chicago, Illinois 60631 Tel. 773.778.4008 Fax 773.778.4914 Email: ciorba@ciorba.com</p>	USER NAME = jk.jeilman	DESIGNED - JMK	REVISED -	<p align="center">STATE OF ILLINOIS DEPARTMENT OF TRANSPORTATION</p>	<p align="center">F.A.I. ROUTE 80 AT U.S. ROUTE 30 LIGHTING STAGING AND TRAFFIC CONTROL - GENERAL NOTES, DESCRIPTION, & TYPICAL SECTION</p>	F.A.I. RTE. = 80	SECTION = 2011-046-L	COUNTY = WILL	TOTAL SHEETS = 106	SHEET NO. = 16
	PLOT SCALE = 2.0000" / IN. PLOT DATE = 3/22/2012	DRAWN - JMK CHECKED - M.JL DATE - 02-14-2012	REVISED - REVISED - REVISED - REVISED -			SCALE: 1" = 50' SHEET NO. OF SHEETS STA. TO STA.	CONTRACT NO. 60P56 ILLINOIS FED. AID PROJECT			