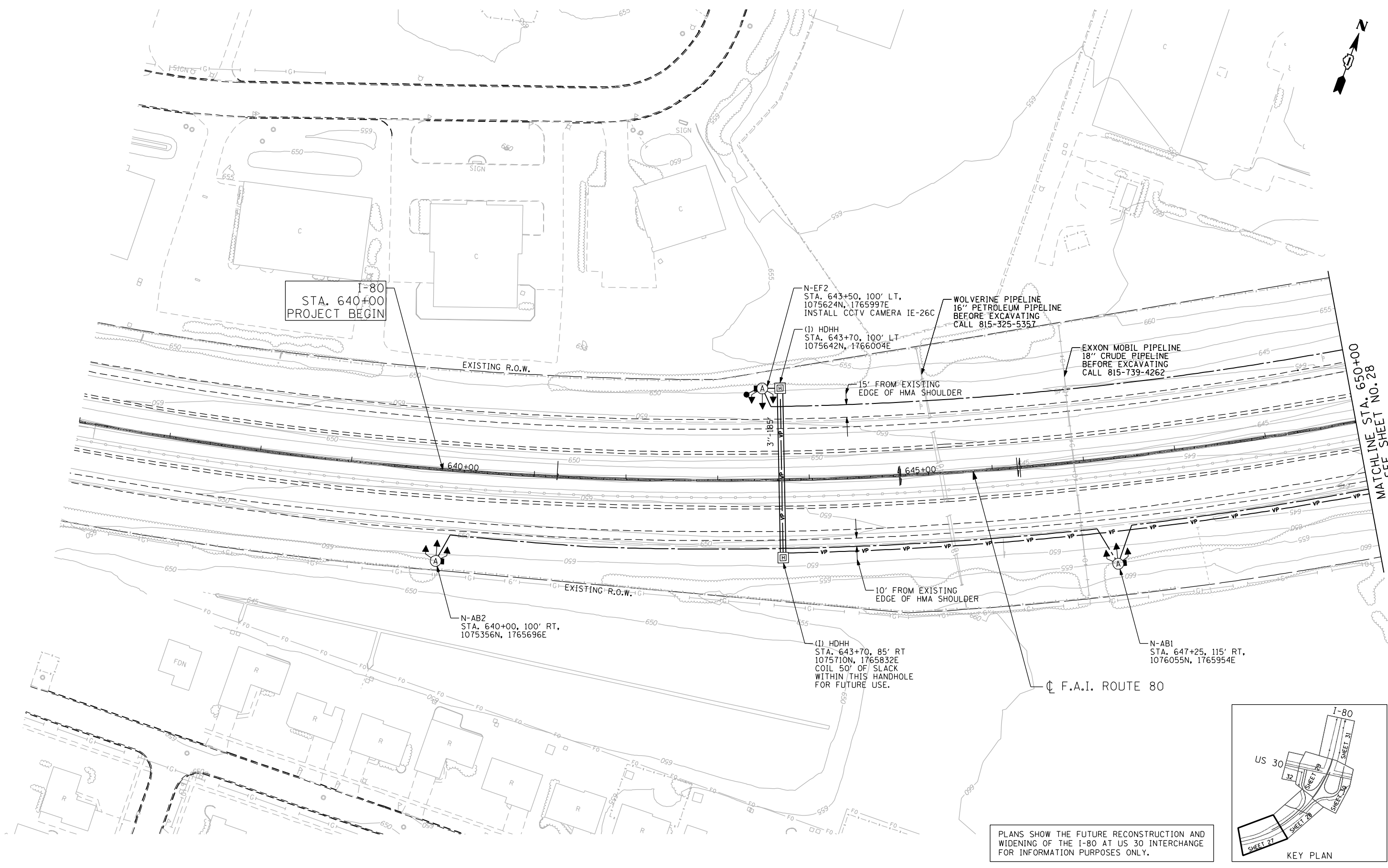
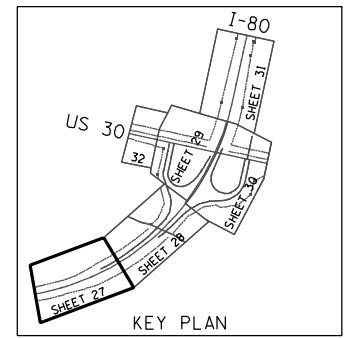


\\svr202\public\proj\0002384-006_high_mast\design\Lighting\384_6_US30_high_mast_light01.dgn



MATCHLINE STA. 650+00
SEE SHEET NO. 28



PLANS SHOW THE FUTURE RECONSTRUCTION AND WIDENING OF THE I-80 AT US 30 INTERCHANGE FOR INFORMATION PURPOSES ONLY.

ENGINEERING CONSULTANT
Clorba Group, Inc.
 CONSULTING ENGINEERS
 8007 North Cumberland Avenue, Suite 402
 Chicago, Illinois 60634
 Tel. 773.778.4008 Fax 773.778.4914
 Email: clorba@clorba.com

USER NAME = jk.jellman	DESIGNED - RJR	REVISED -
PLDT SCALE = 100.0000 "/>		

**STATE OF ILLINOIS
DEPARTMENT OF TRANSPORTATION**

**F.A.I. ROUTE 80 AT U.S. ROUTE 30 LIGHTING
LIGHTING AND I.T.S. PLAN**

F.A.I. RTE. 80	SECTION 2011-046-L	COUNTY WILL	TOTAL SHEETS 106	SHEET NO. 27
			CONTRACT NO. 60P56	
ILLINOIS FED. AID PROJECT				

SCALE: 1" = 50' SHEET NO. OF SHEETS STA. TO STA.