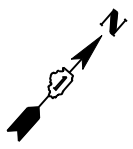
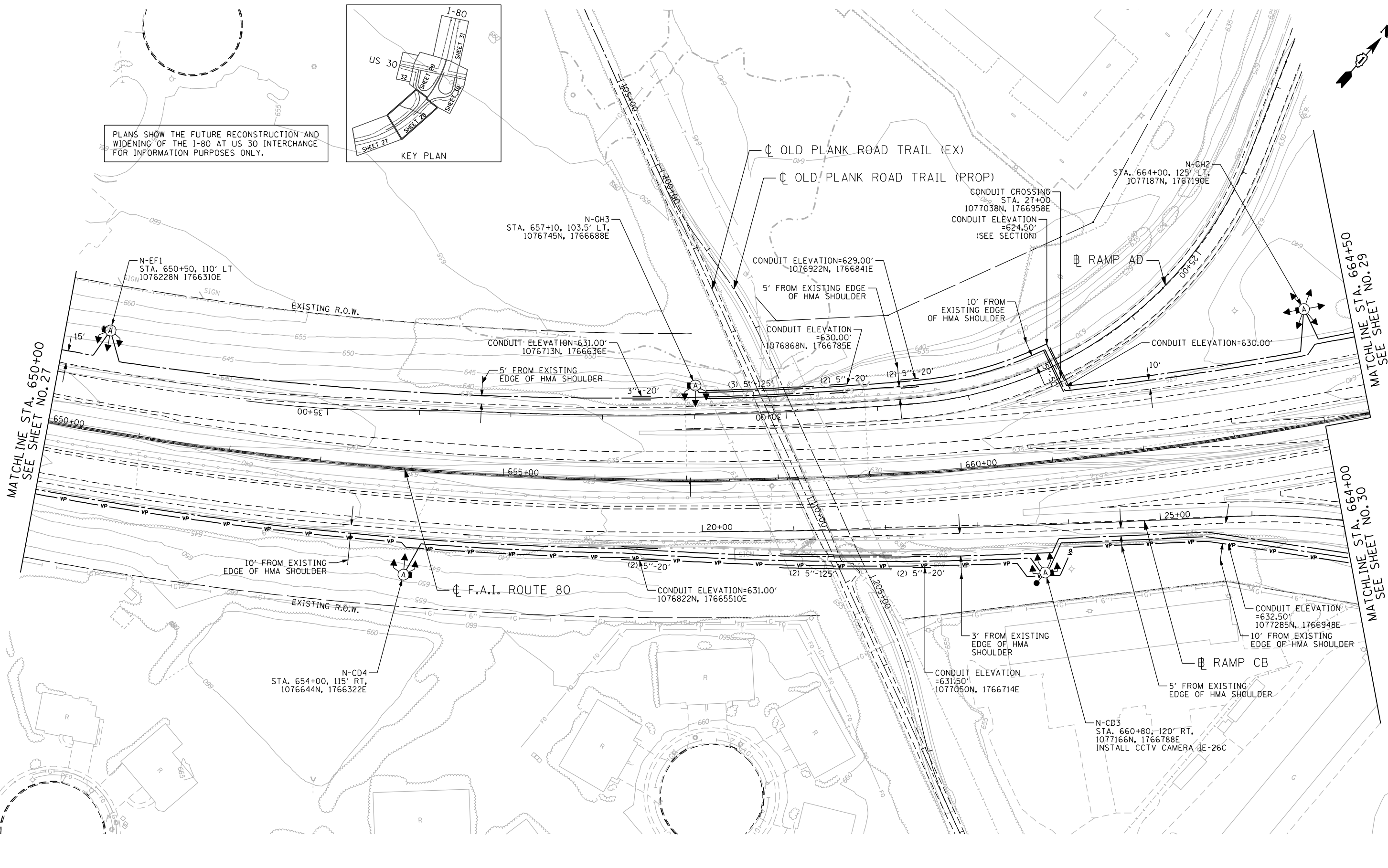
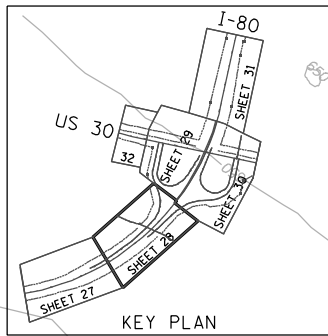


PLANS SHOW THE FUTURE RECONSTRUCTION AND WIDENING OF THE I-80 AT US 30 INTERCHANGE FOR INFORMATION PURPOSES ONLY.



MATCHLINE STA. 650+00  
SEE SHEET NO. 27

MATCHLINE STA. 664+50  
SEE SHEET NO. 29

MATCHLINE STA. 664+00  
SEE SHEET NO. 30

m:\proj\10003384.dwg\16\_high\_mast\_design\Lighting\3384-16\_US30\_High\_Mast\_Lighting.dwg

**ENGINEERING CONSULTANT**  
**Ciorba Group, Inc.**  
 CONSULTING ENGINEERS  
 8007 North Cumberland Avenue, Suite 402  
 Chicago, Illinois 60634  
 Tel. 773.778.4008 Fax 773.778.4914  
 Email: ciorba@ciorba.com

USER NAME = jvondra	DESIGNED - RJR	REVISED -
PLDT SCALE = 100.0000' / IN.	DRAWN - RJR	REVISED -
PLDT DATE = 2/13/2012	CHECKED - JMV	REVISED -
	DATE - 02-14-2012	REVISED -

**STATE OF ILLINOIS  
DEPARTMENT OF TRANSPORTATION**

**F.A.I. ROUTE 80 AT U.S. ROUTE 30 LIGHTING  
LIGHTING AND I.T.S. PLAN**

SCALE: 1" = 50' SHEET NO. OF SHEETS STA. TO STA.

F.A.I. RTE.	SECTION	COUNTY	TOTAL SHEETS	SHEET NO.
80	2011-046-L	WILL	106	28
CONTRACT NO. 60P56			ILLINOIS FED. AID PROJECT	