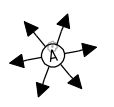
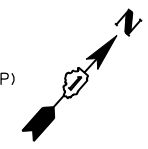
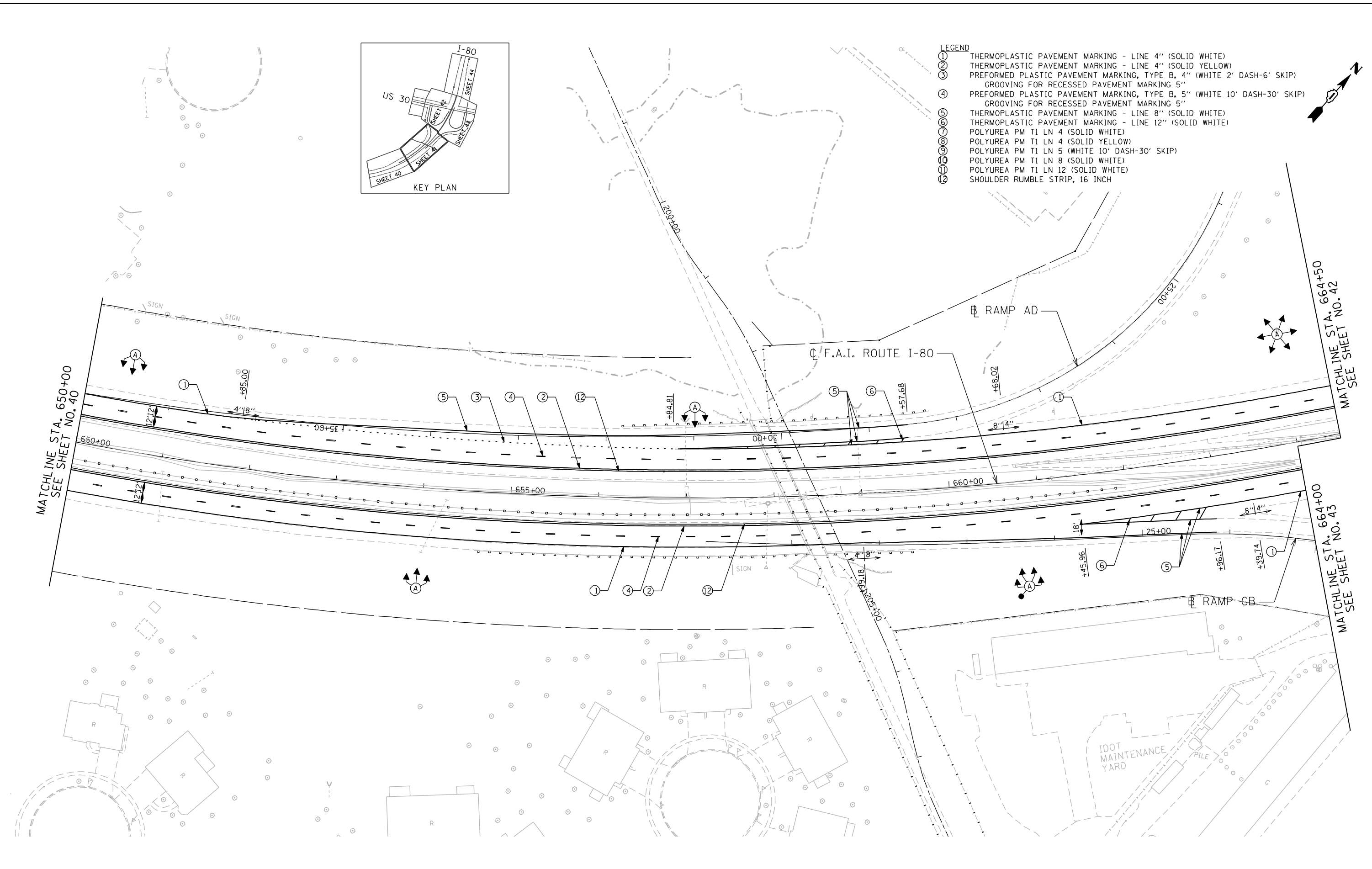


- LEGEND**
- ① THERMOPLASTIC PAVEMENT MARKING - LINE 4" (SOLID WHITE)
 - ② THERMOPLASTIC PAVEMENT MARKING - LINE 4" (SOLID YELLOW)
 - ③ PREFORMED PLASTIC PAVEMENT MARKING, TYPE B, 4" (WHITE 2' DASH-6' SKIP)
 - ④ PREFORMED PLASTIC PAVEMENT MARKING, TYPE B, 5" (WHITE 10' DASH-30' SKIP)
 - ⑤ GROOVING FOR RECESSED PAVEMENT MARKING 5"
 - ⑥ THERMOPLASTIC PAVEMENT MARKING - LINE 8" (SOLID WHITE)
 - ⑦ THERMOPLASTIC PAVEMENT MARKING - LINE 12" (SOLID WHITE)
 - ⑧ POLYUREA PM T1 LN 4 (SOLID WHITE)
 - ⑨ POLYUREA PM T1 LN 4 (SOLID YELLOW)
 - ⑩ POLYUREA PM T1 LN 5 (WHITE 10' DASH-30' SKIP)
 - ⑪ POLYUREA PM T1 LN 8 (SOLID WHITE)
 - ⑫ POLYUREA PM T1 LN 12 (SOLID WHITE)
 - ⑬ SHOULDER RUMBLE STRIP, 16 INCH



\\svr202\public\proj\10002384-00\6_high_mast\design\Stripping_Signing\3384_6_US30_High_Mast.pmk02.dgn

ENGINEERING CONSULTANT
 Clorba Group, Inc.
 CONSULTING ENGINEERS
 8007 North Cumberland Avenue, Suite 402
 Chicago, Illinois 60638
 Tel. 773.778.4008 Fax 773.778.4914
 Email: clorba@clorba.com

USER NAME = jk.jeilman	DESIGNED - JMK	REVISED -
PLLOT SCALE = 100.0000' / IN.	DRAWN - JMK	REVISED -
PLLOT DATE = 3/22/2012	CHECKED - MJL	REVISED -
	DATE - 02-14-2012	REVISED -

**STATE OF ILLINOIS
 DEPARTMENT OF TRANSPORTATION**

**F.A.I. ROUTE 80 AT U.S. ROUTE 30 LIGHTING
 PAVEMENT MARKING PLAN**

SCALE: 1" = 50' SHEET NO. OF SHEETS STA. TO STA.

F.A.I. RTE. 80	SECTION 2011-046-L	COUNTY WILL	TOTAL SHEETS 106	SHEET NO. 41
CONTRACT NO. 60P56			ILLINOIS FED. AID PROJECT	