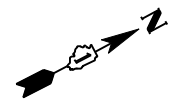
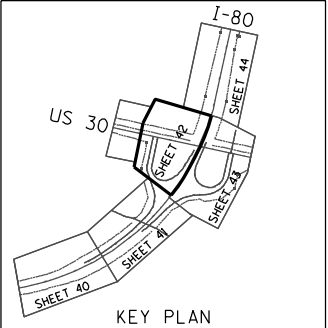
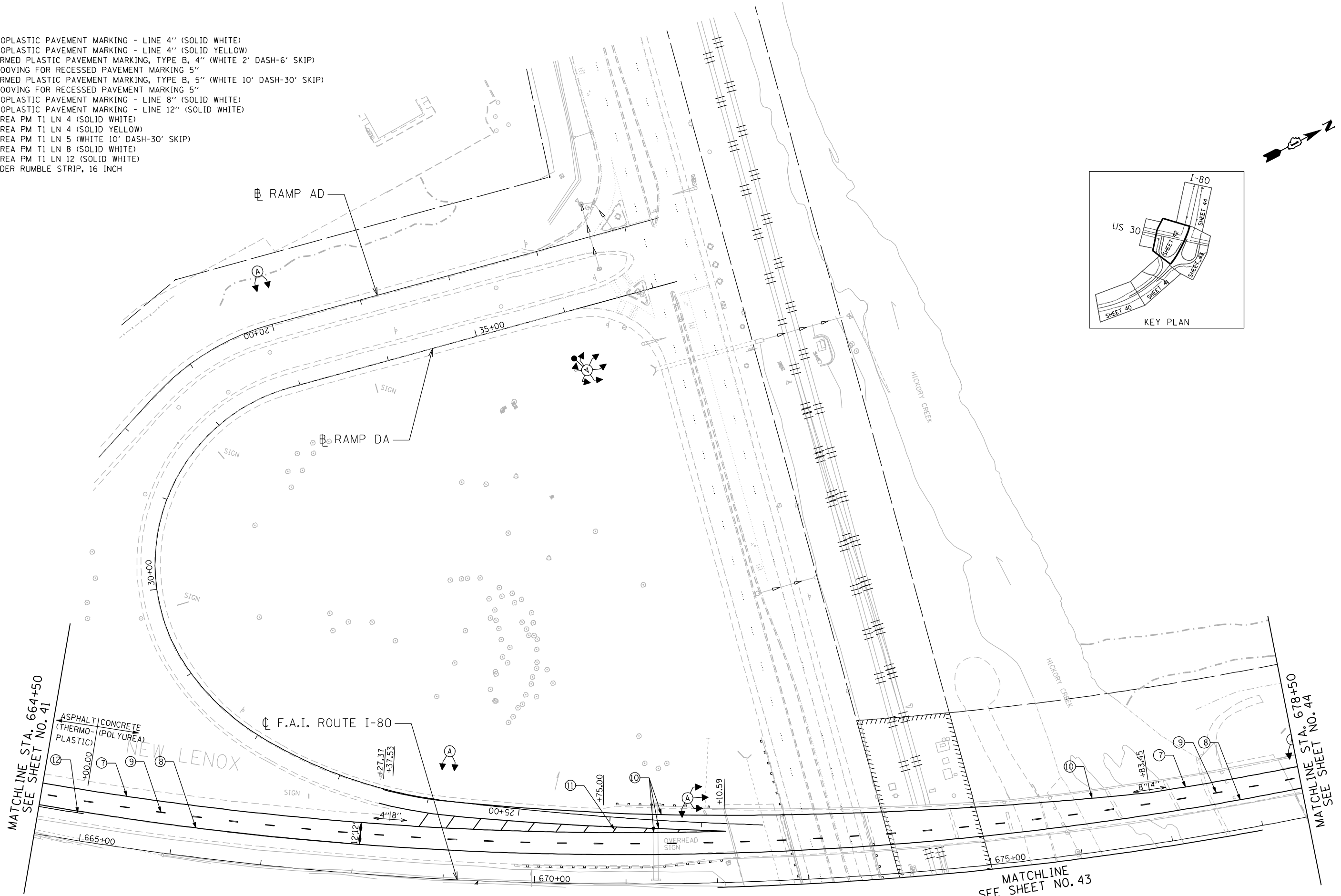


LEGEND

- ① THERMOPLASTIC PAVEMENT MARKING - LINE 4" (SOLID WHITE)
- ② THERMOPLASTIC PAVEMENT MARKING - LINE 4" (SOLID YELLOW)
- ③ PREFORMED PLASTIC PAVEMENT MARKING, TYPE B, 4" (WHITE 2' DASH-6' SKIP)
- ④ PREFORMED PLASTIC PAVEMENT MARKING, TYPE B, 5" (WHITE 10' DASH-30' SKIP)
- ⑤ GROOVING FOR RECESSED PAVEMENT MARKING 5"
- ⑥ THERMOPLASTIC PAVEMENT MARKING - LINE 8" (SOLID WHITE)
- ⑦ THERMOPLASTIC PAVEMENT MARKING - LINE 12" (SOLID WHITE)
- ⑧ POLYUREA PM T1 LN 4 (SOLID WHITE)
- ⑨ POLYUREA PM T1 LN 4 (SOLID YELLOW)
- ⑩ POLYUREA PM T1 LN 5 (WHITE 10' DASH-30' SKIP)
- ⑪ POLYUREA PM T1 LN 8 (SOLID WHITE)
- ⑫ POLYUREA PM T1 LN 12 (SOLID WHITE)
- ⑬ SHOULDER RUMBLE STRIP, 16 INCH



MATCHLINE STA. 664+50
SEE SHEET NO. 41

MATCHLINE STA. 678+50
SEE SHEET NO. 44

MATCHLINE
SEE SHEET NO. 43

\\svr202\public\proj\0002384-006_high_mast\design\Stripping_Signing\3384_6_US30_High_Mast_pmk02.dgn

	USER NAME = jk.jellman	DESIGNED - JMK	REVISED -	STATE OF ILLINOIS DEPARTMENT OF TRANSPORTATION	F.A.I. ROUTE 80 AT U.S. ROUTE 30 LIGHTING PAVEMENT MARKING PLAN	F.A.I. RTE. = 80	SECTION = 2011-046-L	COUNTY = WILL	TOTAL SHEETS = 106	SHEET NO. = 42	
	PLT SCALE = 100.0000' / IN.	CHECKED - M.J.L.	REVISED -			SCALE: 1" = 50'	SHEET NO. OF SHEETS	STA. TO STA.	CONTRACT NO. 60P56		
	PLT DATE = 3/22/2012	DATE = 02-14-2012	REVISED -			ILLINOIS FED. AID PROJECT					