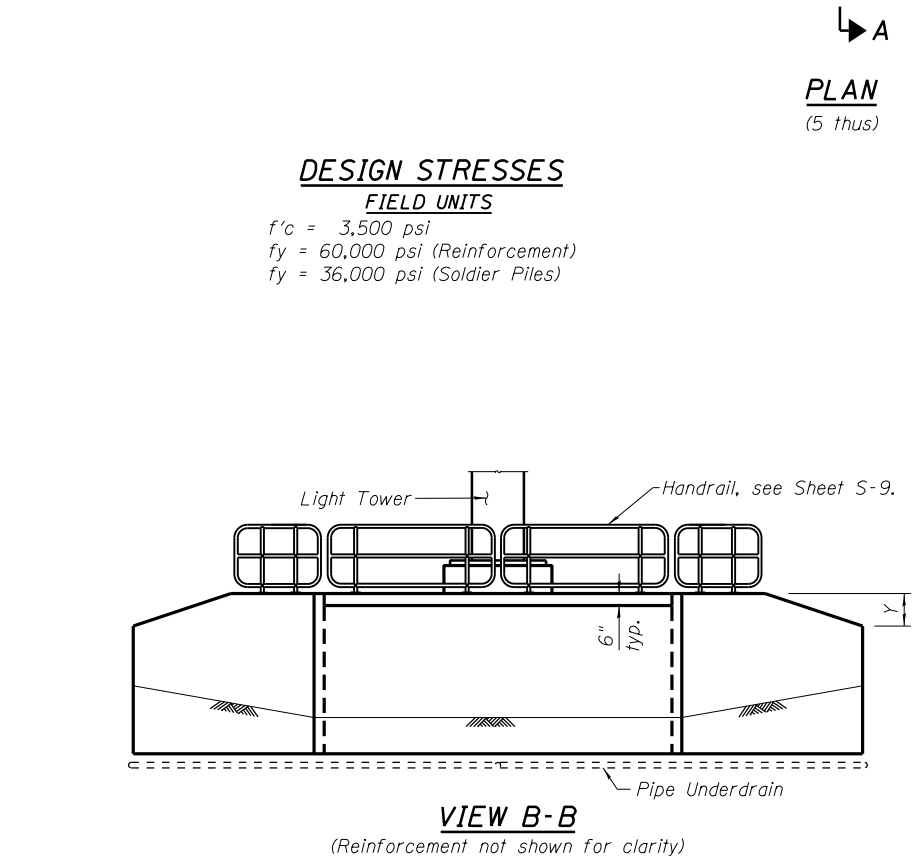
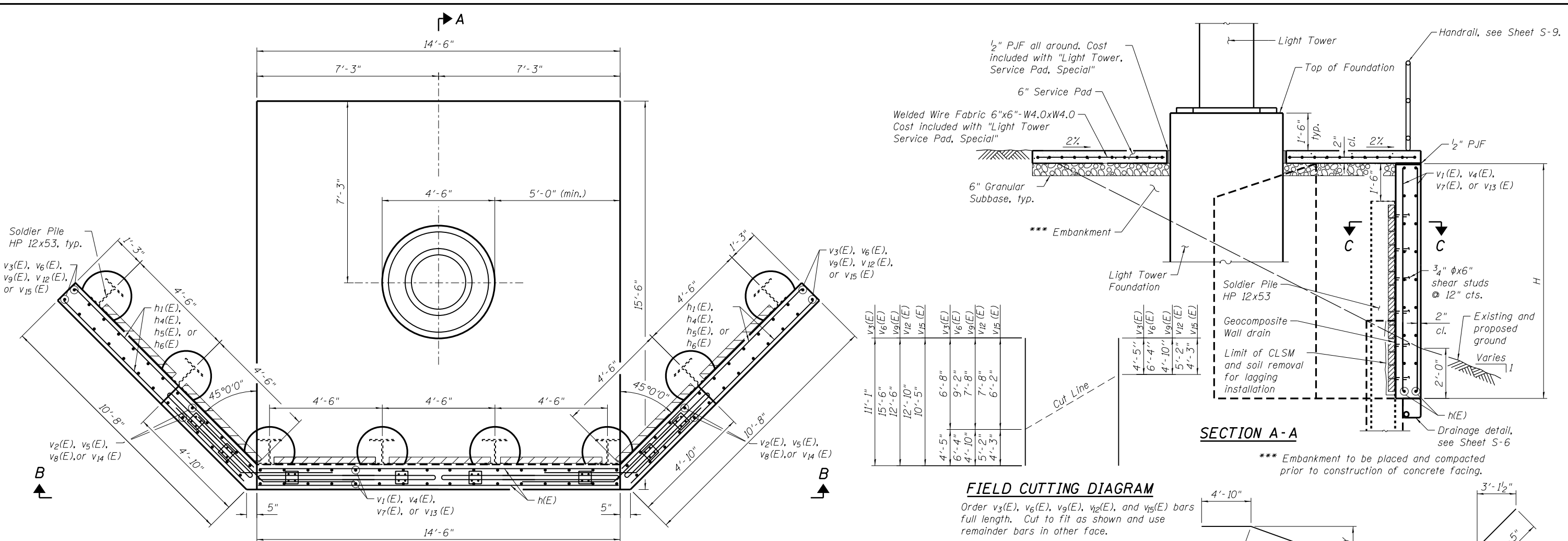
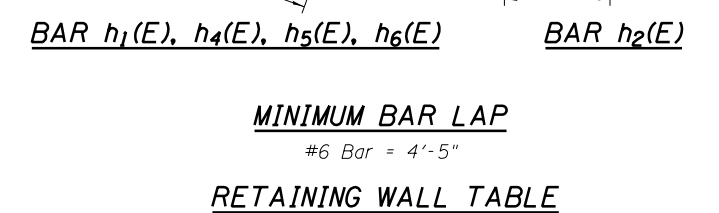


N:\PROJECTS\0003384\0003384\_06\_High Mast Foundation Service Pad & Wall Details Type B.dgn



**DESIGN STRESSES**  
**FIELD UNITS**  
 $f'_c = 3,500 \text{ psi}$   
 $f_y = 60,000 \text{ psi (Reinforcement)}$   
 $f_y = 36,000 \text{ psi (Soldier Piles)}$

Tower ID	Top of Pile Elev.	Pile Tip Elev.	Bottom of Wall Elev.	H	X	Y	Bar Dimension
IJ1	642.1	625.3	636.6	7.0	8	h <sub>1</sub> (E)	2'-3"
KL1	642.1	619.3	634.1	9.5	10	h <sub>4</sub> (E)	2'-10"
MN2	644.1	625.6	637.6	8.0	9	h <sub>4</sub> (E)	2'-10"
KL2	640.0	622.0	633.5	8.0	9	h <sub>5</sub> (E)	2'-6"
KL3	636.9	623.9	631.9	6.5	7	h <sub>6</sub> (E)	1'-11"



**MINIMUM BAR LAP**  
 #6 Bar = 4'-5"

**RETAINING WALL TABLE**

Tower ID	Top of Pile Elev.	Pile Tip Elev.	Bottom of Wall Elev.	H	X	Y	Bar Dimension
IJ1	642.1	625.3	636.6	7.0	8	h <sub>1</sub> (E)	2'-3"
KL1	642.1	619.3	634.1	9.5	10	h <sub>4</sub> (E)	2'-10"
MN2	644.1	625.6	637.6	8.0	9	h <sub>4</sub> (E)	2'-10"
KL2	640.0	622.0	633.5	8.0	9	h <sub>5</sub> (E)	2'-6"
KL3	636.9	623.9	631.9	6.5	7	h <sub>6</sub> (E)	1'-11"

- NOTES:**
- For location of Light Tower Foundations, see Roadway Lighting Plan Sheets.
  - For High Mast Light Tower Foundation details, see Sheets S-1 thru S-3.
  - The Contractor is responsible for the design and performance of the lagging using no less than a 3" nominal rough-sawn thickness and timber with a minimum allowable bending stress of 1,000 psi.
  - For Section C-C, see Sheet S-6.
  - For Retaining Wall schedules, see Sheet S-6.
  - E.F. denotes Each Face.

**Clorba Group, Inc.**  
 CONSULTING ENGINEERS  
 1001 North Cumberland Avenue  
 Suite 202 Chicago, Illinois 60656  
 Tel: 773-774-4000  
 Fax: 773-774-4014  
 Email: clorba@clorba.com

USER NAME = rdonley  
 DESIGNED - MHT  
 CHECKED - BWS  
 PLOT SCALE = 4x0.0000 "/>