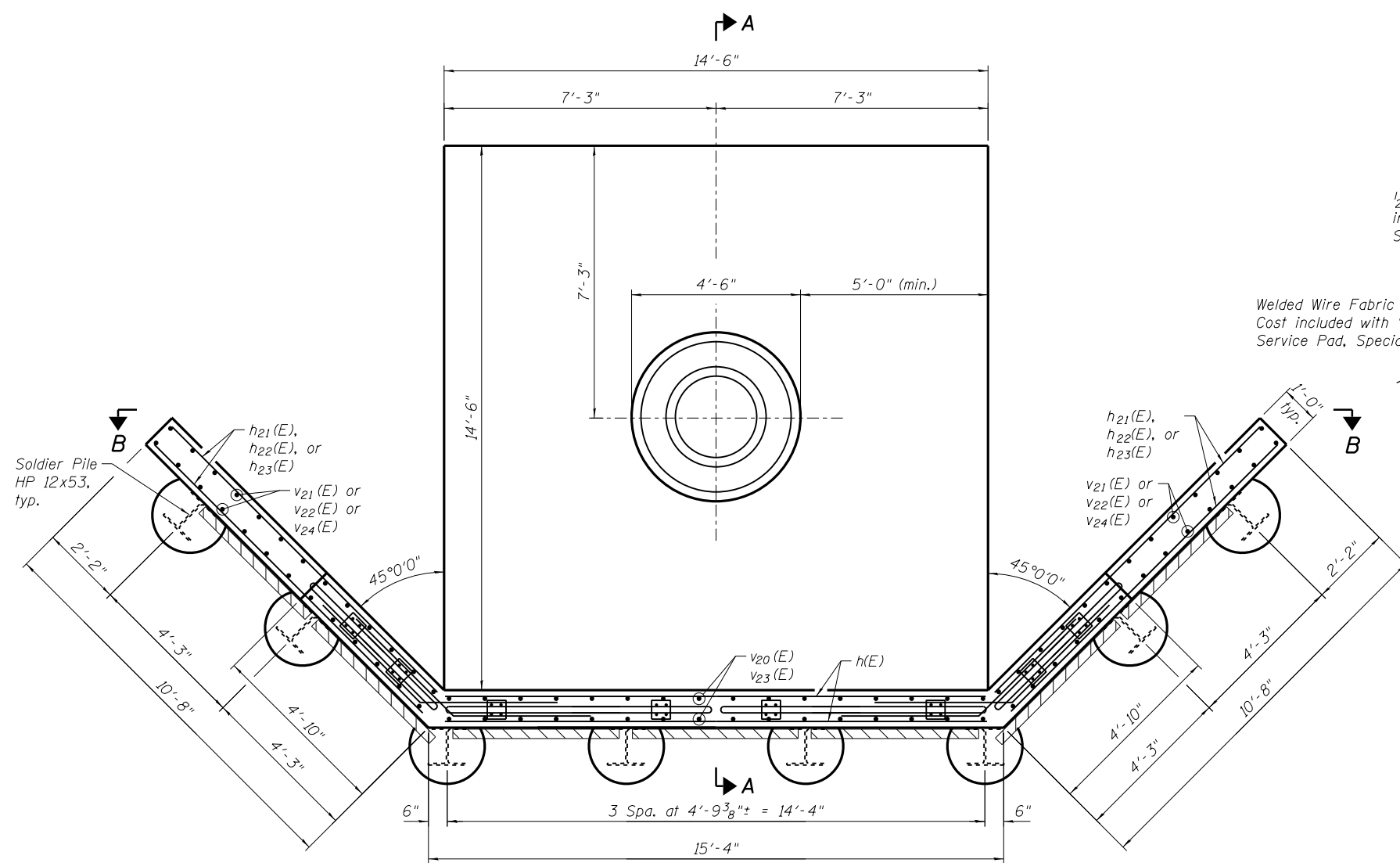


N:\PROJECTS\0003384\0003384\_06\_High Mast Foundation Service Pad & Wall Details Type C.dgn  
 07 High Mast Foundation Service Pad & Wall Details Type C.dgn



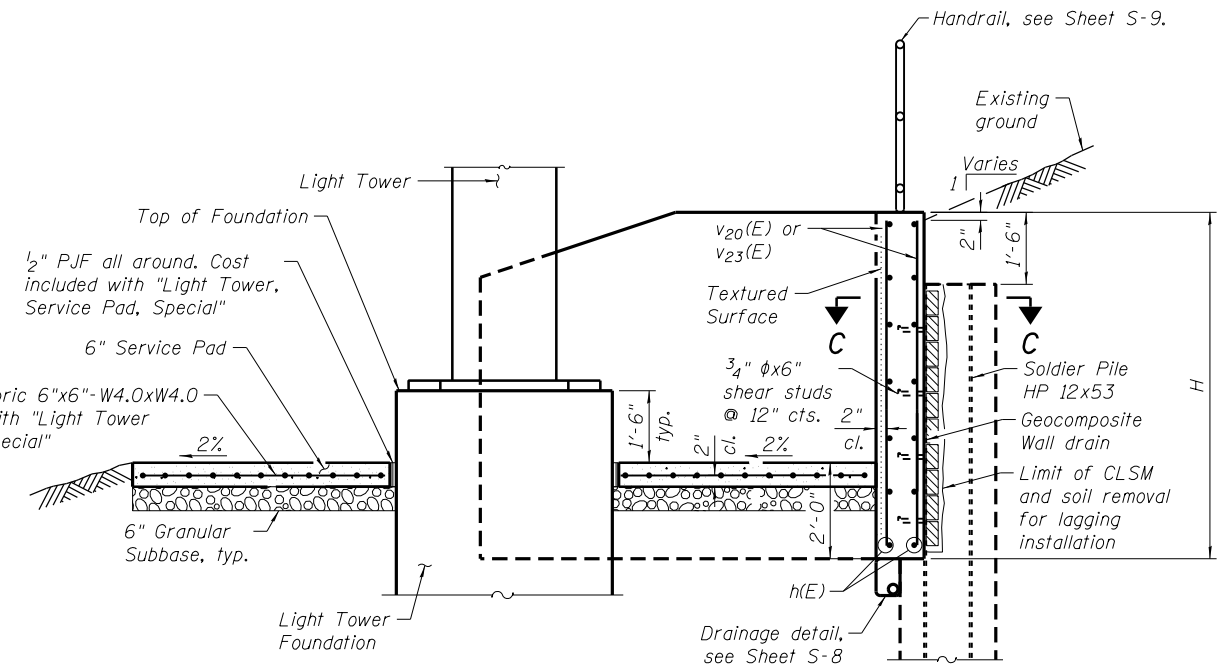
**PLAN**  
(3 thus)

Tower IJ3	**6- #6 v <sub>21</sub> (E) bars at 12" cts. E.F.	5- #6 v <sub>20</sub> (E) bars at 12" cts. E.F.	15- #6 v <sub>20</sub> (E) bars at 12" cts. (E.F.)	5- #6 v <sub>20</sub> (E) bars at 12" cts. E.F.	**6- #6 v <sub>21</sub> (E) bars at 12" cts. E.F.
Tower QR2	**6- #6 v <sub>22</sub> (E) bars at 12" cts. E.F.	5- #6 v <sub>20</sub> (E) bars at 12" cts. E.F.	15- #6 v <sub>20</sub> (E) bars at 12" cts. (E.F.)	5- #6 v <sub>20</sub> (E) bars at 12" cts. E.F.	**6- #6 v <sub>22</sub> (E) bars at 12" cts. E.F.
Tower IJ4	**6- #6 v <sub>24</sub> (E) bars at 12" cts. E.F.	5- #6 v <sub>23</sub> (E) bars at 12" cts. E.F.	15- #6 v <sub>23</sub> (E) bars at 12" cts. (E.F.)	5- #6 v <sub>23</sub> (E) bars at 12" cts. E.F.	**6- #6 v <sub>24</sub> (E) bars at 12" cts. E.F.

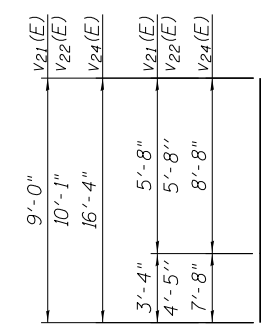
\* Cut in field as needed  
\*\* See Field Cutting Diagram

**DESIGN STRESSES**  
**FIELD UNITS**

f'<sub>c</sub> = 3,500 psi  
f<sub>y</sub> = 60,000 psi (Reinforcement)  
f<sub>y</sub> = 36,000 psi (Soldier Pile)



**SECTION A-A**



**FIELD CUTTING DIAGRAM**

Order v<sub>21</sub>(E), v<sub>22</sub>(E), and v<sub>24</sub>(E) bars full length.  
Cut to fit as shown and use remainder bars in other face.

**MINIMUM BAR LAPS**

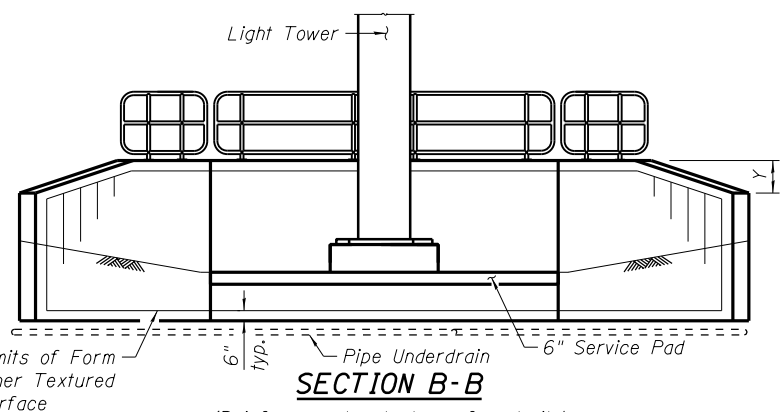
#6 Bar = 4'-5"

**RETAINING WALL TABLE**

Tower ID	Top of Pile Elev.	Pile Tip Elev.	Bottom of Wall Elev.	H	X	Y		Z	Est. Top of Rock Elev.
						Bar	Dimension		
IJ3	630.1	620.4	625.6	6.0'	7	h <sub>21</sub> (E)	2'-4"	6	623.4
QR2	641.6	628.3	637.1	6.0'	7	h <sub>22</sub> (E)	1'-3"	6	626.6
IJ4	617.5	593.0	610.0	9.0'	10	h <sub>23</sub> (E)	1'-0"	9	594.0

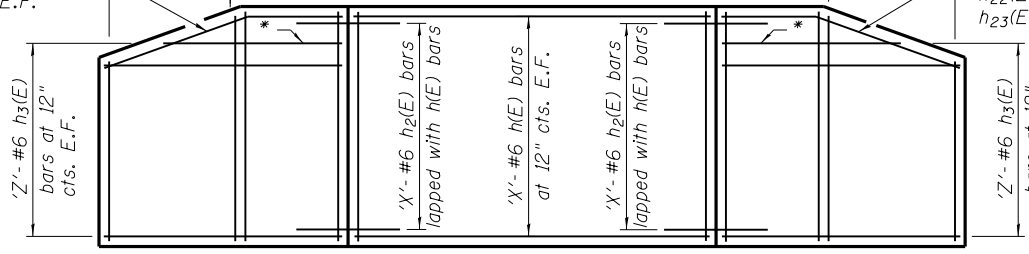
**NOTES:**

- For location of Light Tower Foundations, see Roadway Lighting Plan Sheets.
- For High Mast Light Tower Foundation details, see Sheets S-1 thru S-3.
- The Contractor is responsible for the design and performance of the lagging using no less than a 3" nominal rough-sawn thickness and timber with a minimum allowable bending stress of 1,000 psi.
- For Section C-C, see Sheet S-8.
- For Retaining Wall schedules, see Sheet S-8.
- E.F. denotes Each Face.



**SECTION B-B**

(Reinforcement not shown for clarity)



**INSIDE FACE ELEVATION (PROJECTED)**



USER NAME = rdonley	DESIGNED - MHT	REVISED -
PLOT SCALE = 4x0.0000 1" = 10'	CHECKED - BWS	REVISED -
PLOT DATE = 2/13/2012	DRAWN - SMY	REVISED -
	CHECKED - BWS	REVISED -

**STATE OF ILLINOIS**  
**DEPARTMENT OF TRANSPORTATION**

**F.A.I. ROUTE 80 AT U.S. ROUTE 30 LIGHTING**  
**LIGHT TOWER, SERVICE PAD, SPECIAL (TYPE C)**

SHEET NO. S-7 OF S-17 SHEETS

F.A.I. RTE.	SECTION	COUNTY	TOTAL SHEETS	SHEET NO.
80	2011-046-L	WILL	106	74
CONTRACT NO. 60P56			ILLINOIS FED. AID PROJECT	