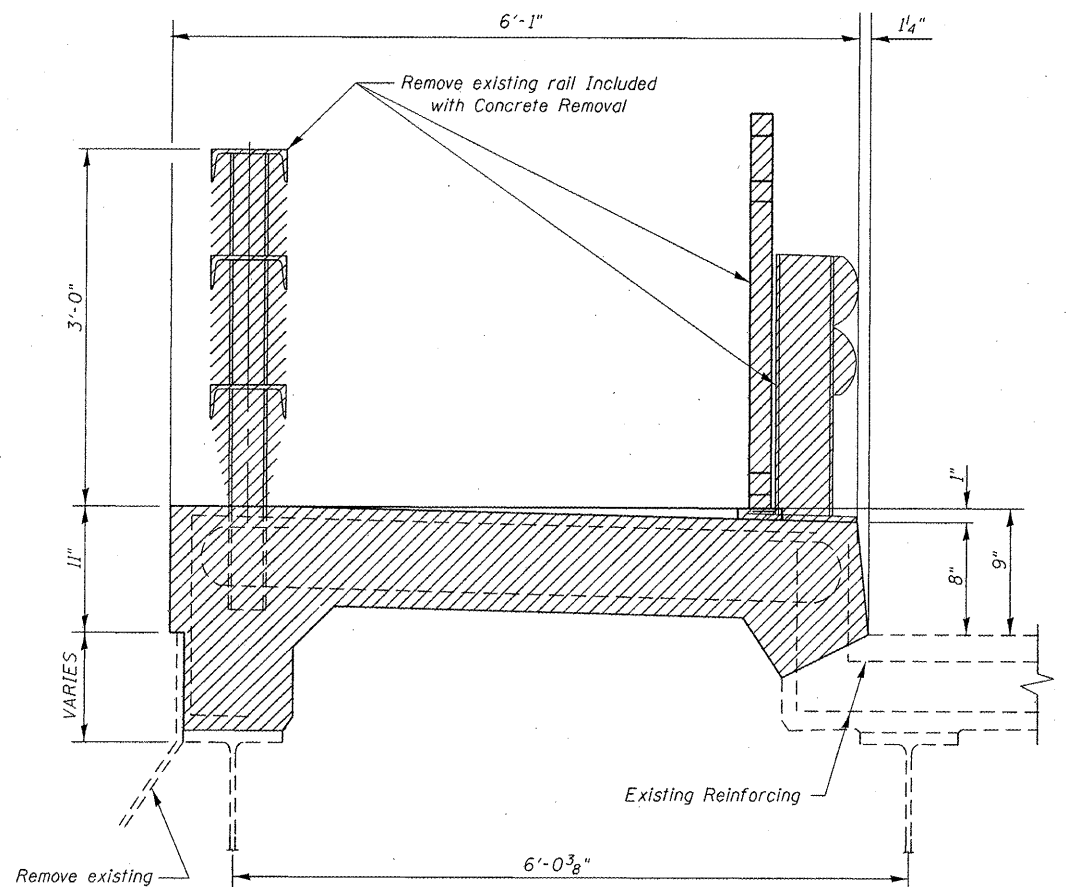


BILL OF MATERIALS

Bar	No.	Size	Length	Shape
a(E)	8	#4	6'-5"	—
a1(E)	24	#4	10"	—
b(E)	126	#5	28'-0"	—
b ₁ (E)	208	#5	31'-2"	—
b ₂ (E)	36	#6	26'-6"	—
c(E)	444	#5	7'-3"	┘
c ₁ (E)	888	#5	7'-7"	┘
c ₂ (E)	444	#5	3'-6"	┘
d(E)	462	#4	4'-10"	┘
d ₁ (E)	462	#6	4'-8"	┘
d ₂ (E)	96	#4	3'-5"	┘
d ₃ (E)	8	#4	3'-7"	┘
d ₄ (E)	8	#6	3'-6"	┘
e(E)	24	#4	23'-6"	—
e ₁ (E)	72	#4	8'-0"	—
e ₂ (E)	48	#4	25'-7"	—
e ₃ (E)	24	#4	24'-0"	—
h(E)	20	#4	1'-6"	┘
Reinforcement Bars (Epoxy Coated)		Pound	30900	
Concrete Removal		Cu. Yd.	95.1	
Concrete Superstructure		Cu. Yd.	185	

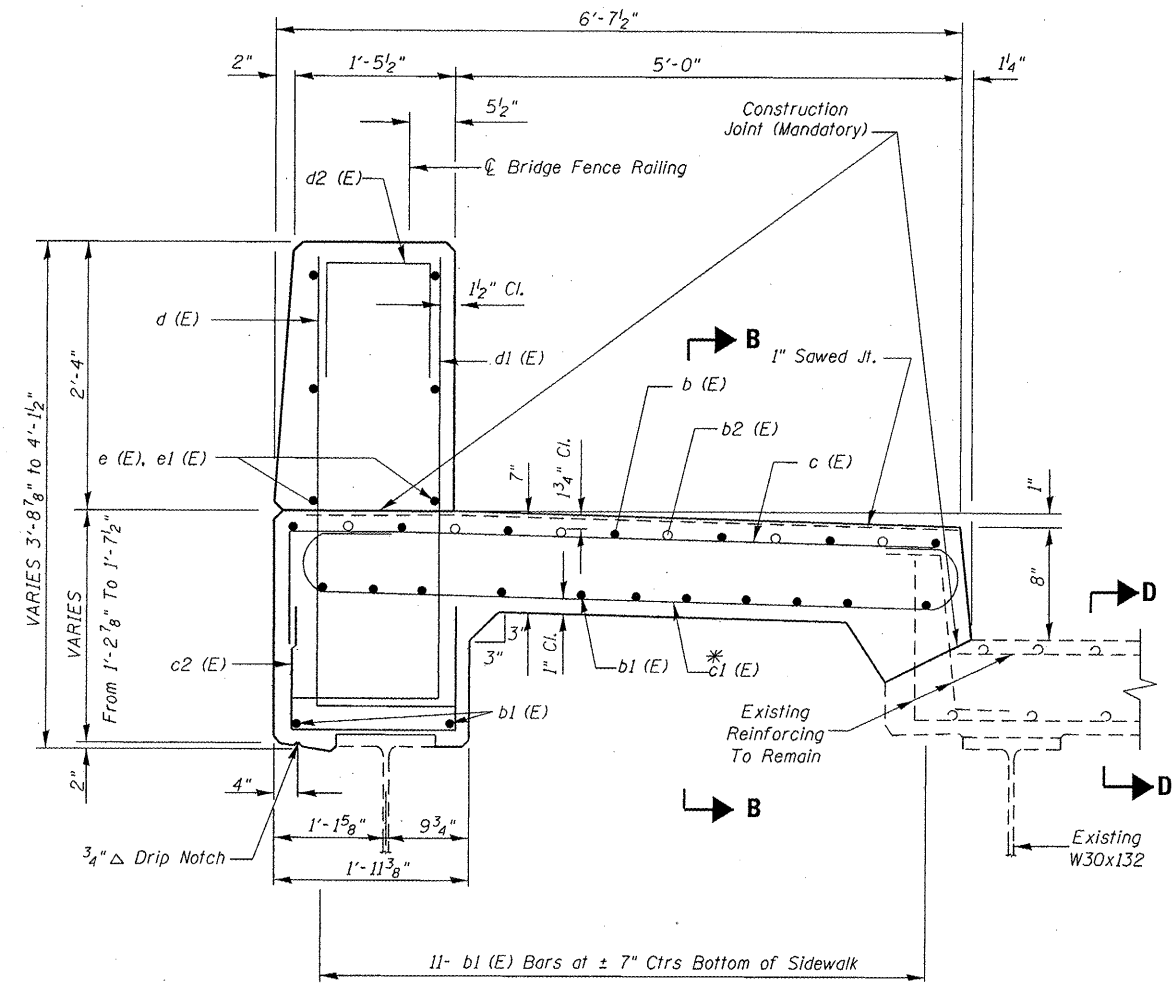
Reinforcement bars designated (E) shall be epoxy coated.
 Bars indicated thus 1 x 8-#5 etc. indicates 1 line of bars with 8 lengths per line.



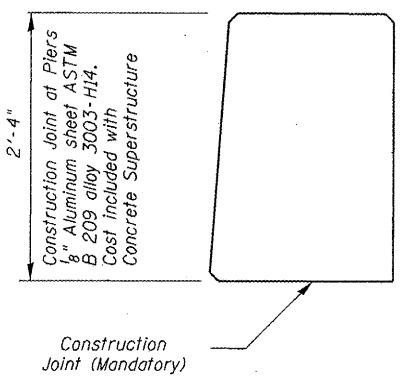
SECTION A-A
 (HATCHED AREA INDICATES REMOVAL)
 (EXISTING)

Remove existing flashing. Cost Included with Concrete Removal

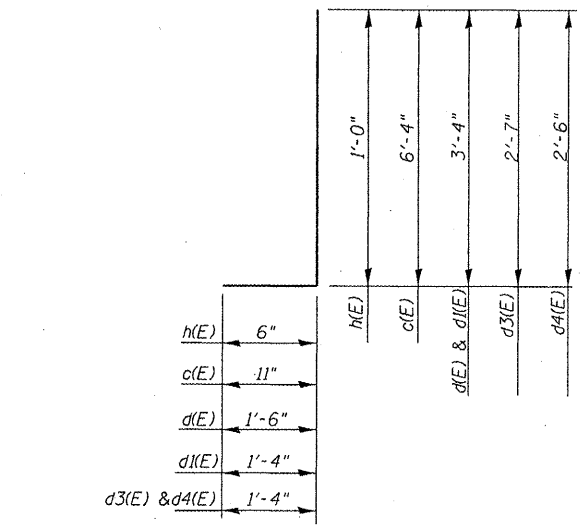
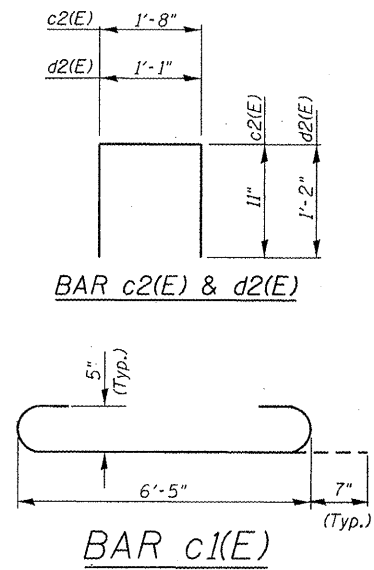
NOTE:
 For Section B-B, See Sheet 6 of 18
 For Section D-D, See Sheet 6 of 18



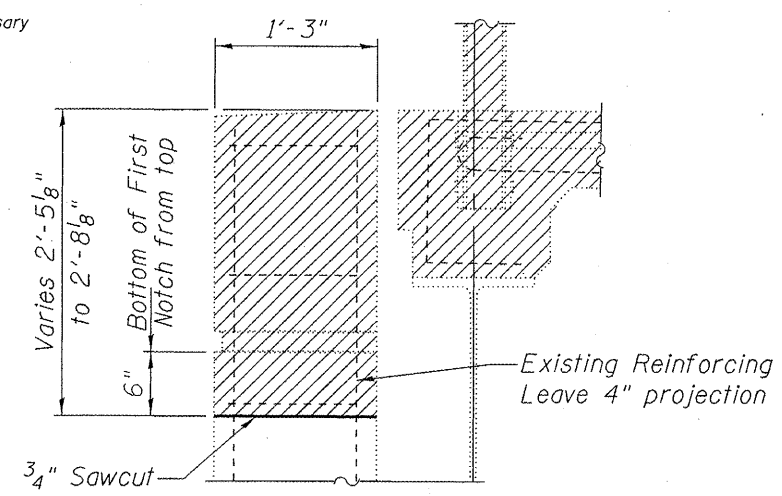
SECTION A-A
 (PROPOSED)
 * The hooks of c1 (E) Bars as necessary to maintain clearance



PARAPET JOINT DETAILS



BAR c(E), d(E), d1(E), d3(E), d4(E), & h(E)



DETAIL 1
DECORATIVE COLUMNS
AT PIERS AND ABUTMENTS

FILE NAME =	USER NAME = curryw	DESIGNED - MVT	REVISED -
c:\pwwork\pwwork\curryw\d0288452\0162211-Design.dgn	11-Design.dgn	DRAWN - MVT	REVISED -
PLOT SCALE = 100.4408 / 10		CHECKED - AWC	REVISED -
PLOT DATE = 3/23/2012		DATE - 2-29-12	REVISED -

STATE OF ILLINOIS
DEPARTMENT OF TRANSPORTATION

DEVON AVENUE AT ILL 94 (EDENS EXPRESSWAY)
PARAPET JOINT DETAILS
S.N. 016-0834

F.A.I. RTE.	SECTION	COUNTY	TOTAL SHEETS	SHEET NO.
94	2011-066-1	COOK	18	6A
CONTRACT NO. 60P85				
ILLINOIS FED. AID PROJECT				

SCALE: SHEET 3A OF 9 SHEETS STA. TO STA.