

NOTES

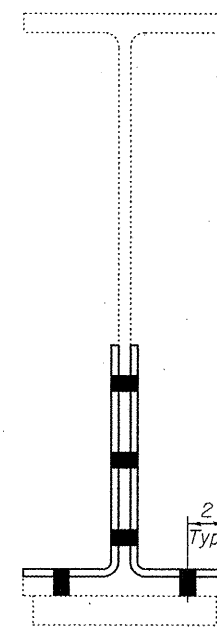
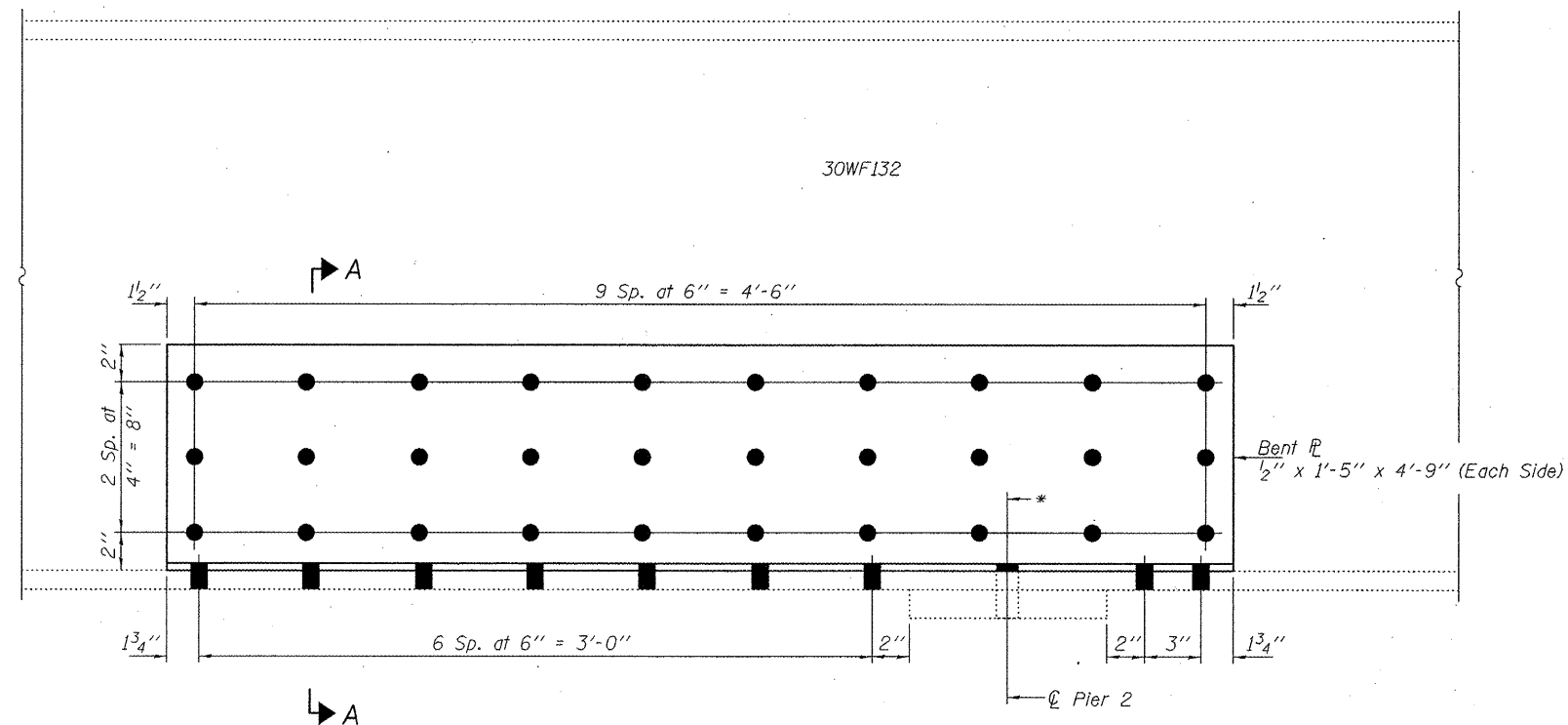
All structural steel shall conform to AASHTO Classification M-270 Gr. 36, unless otherwise noted.

Cost of removal and re-installation of all members necessary to complete the work as detailed on the plans and as specified in the Special Provisions shall be included with Structural Steel Repair.

Existing structural steel that will be in contact with new structural steel shall be cleaned and painted prior to erection as required by the Special Provision "Cleaning and Painting Contact Surface Areas of Existing Steel Structures".

All structural steel shall be shop painted with the inorganic zinc rich primer per AASHTO M300, Type 1. Cost included with Structural Steel Repair.

Fasteners shall be high strength bolts. Bolts $\frac{7}{8}$ " ϕ , open holes $\frac{15}{16}$ " ϕ , unless otherwise noted.



SECTION A-A

BEAM 12 REPAIR
(Looking South)

* Hole in bent plate to be field drilled using hole in beam and bearing plate as template.

BILL OF MATERIAL

| ITEM | UNIT | QUANTITY |
|-------------------------|-------|----------|
| Structural Steel Repair | Pound | 320 |
| | | |
| | | |

| | | |
|------------------------|------------------------------------|----------------------------|
| DESIGNED <i>DAB</i> | EXAMINED | DATE <i>MARCH 26, 2012</i> |
| CHECKED <i>VHV</i> | ENGINEER OF STRUCTURAL SERVICES | |
| DRAWN <i>balva</i> | PASSED | REVISED |
| CHECKED <i>DAB VHV</i> | ENGINEER OF BRIDGES AND STRUCTURES | REVISED |

STATE OF ILLINOIS
DEPARTMENT OF TRANSPORTATION

REPAIR DETAILS
SN 016-0834

SHEET NO. **5** OF **9** SHEETS

| | | | | |
|--------------------|------------|--------|---------------------------|-----------|
| F.A.I. RTE. | SECTION | COUNTY | TOTAL SHEETS | SHEET NO. |
| 94 | 2011-066-1 | COOK | 18 | 8 |
| CONTRACT NO. 60P85 | | | ILLINOIS FED. AID PROJECT | |