

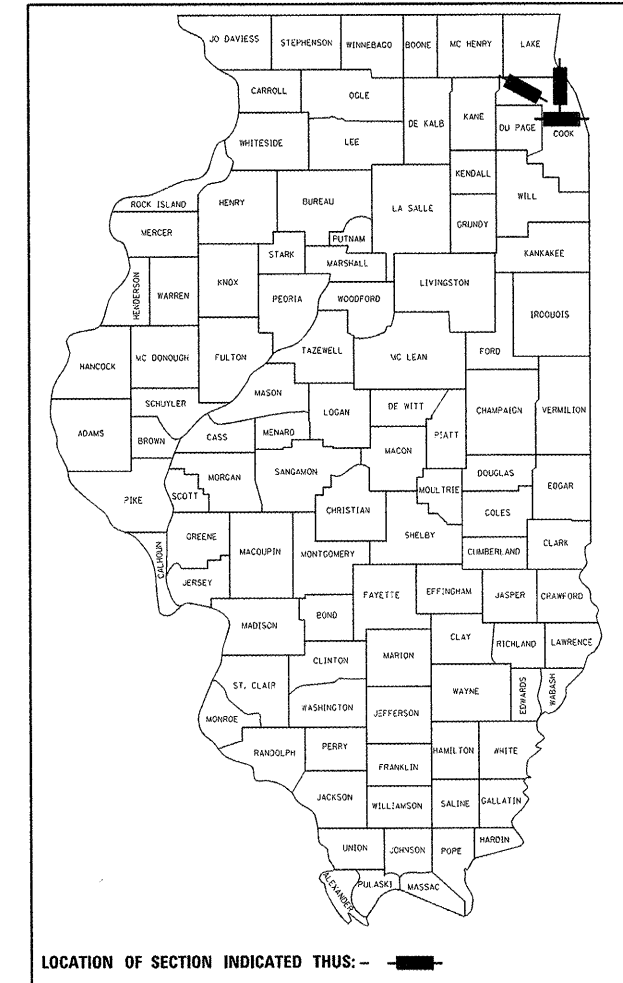
F.A. RTE.	SECTION	COUNTY	TOTAL SHEETS	SHEET NO.
VAR.	2011-212-1	COOK	18	1
FED. ROAD DIST. NO 1	ILLINOIS	CONTRACT NO. 60R54		

STATE OF ILLINOIS
DEPARTMENT OF TRANSPORTATION
DIVISION OF HIGHWAYS

**PROPOSED
HIGHWAY PLANS**

VARIOUS ROUTES
SECTION 2011-212-1
VARIOUS LOCATIONS IN NORTH COOK COUNTY
SCOUR COUNTERMEASURES
COOK COUNTY
C-91-134-12

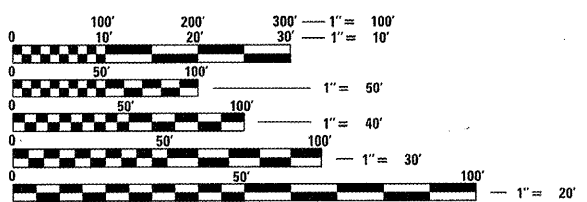
D-91-134-12



FOR INDEX OF SHEETS, SEE SHEET NO. 2
FOR TRAFFIC DATA, SEE SHEET NO. 4

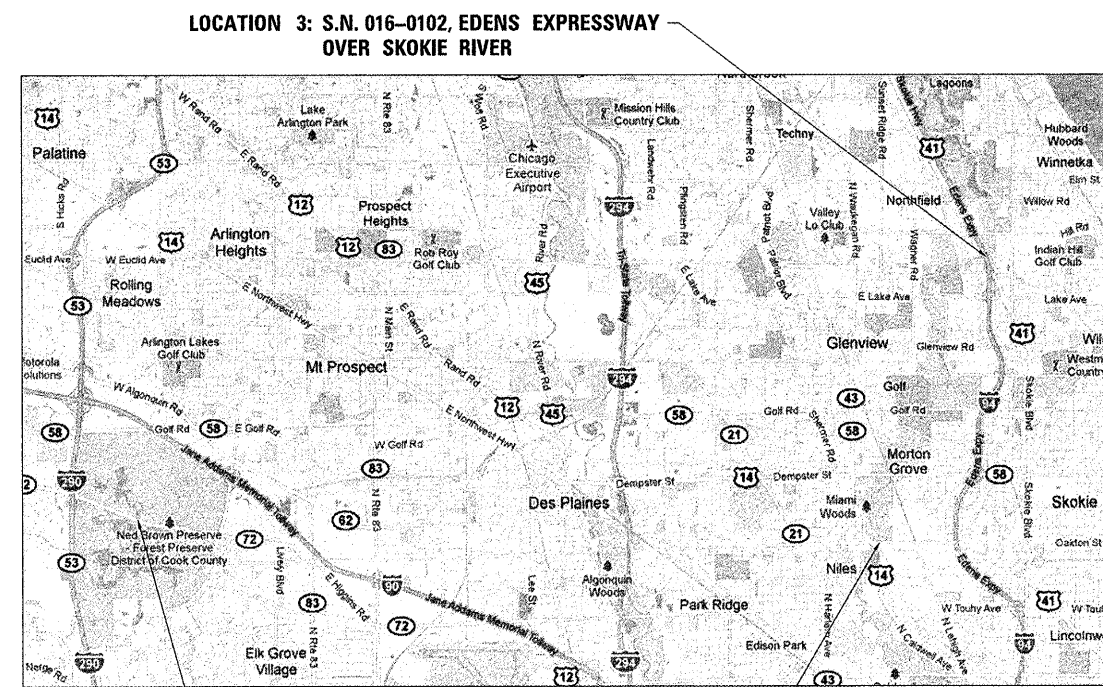
IMPROVEMENTS LOCATED IN THE
VILLAGE OF ELK GROVE
VILLAGE OF MORTON GROVE
UNINCORPORATED COOK COUNTY

DISTRICT ONE - PLAN PREPARATION ENGINEER: KEN ENG: (847) 705-4247



FULL SIZE PLANS HAVE BEEN PREPARED USING STANDARD ENGINEERING SCALES. REDUCED SIZED PLANS WILL NOT CONFORM TO STANDARD SCALES. IN MAKING MEASUREMENTS ON REDUCED PLANS, THE ABOVE SCALES MAY BE USED.

J.U.L.I.E.
JOINT UTILITY LOCATION INFORMATION FOR EXCAVATION
1-800-892-0123
OR 811



LOCATION 3: S.N. 016-0102, EDENS EXPRESSWAY OVER SKOKIE RIVER

LOCATION 2: S.N. 016-0555, OAKTON STREET OVER NORTH BRANCH OF THE CHICAGO RIVER

LOCATION 1: S.N. 016-0504, ILLINOIS ROUTE 72 OVER SALT CREEK



STATE OF ILLINOIS
DEPARTMENT OF TRANSPORTATION
DIVISION OF HIGHWAYS

SUBMITTED FEBRUARY 14, 2012
Diana M. O'Keefe DEPUTY DIRECTOR OF HIGHWAYS, REGION ENGINEER
March 23, 2012
John D. Baranzelli, P.E. ACTING ENGINEER OF DESIGN AND ENVIRONMENT
March 23, 2012
William R. Freyer ACTING DIRECTOR OF HIGHWAYS, CHIEF ENGINEER

PROFESSIONAL ENGINEER'S SIGN & SEAL

Christopher M. Hartke
EXPIRES: 11-30-13

PRINTED BY THE AUTHORITY
OF THE STATE OF ILLINOIS

CONTRACT NO. 60R54