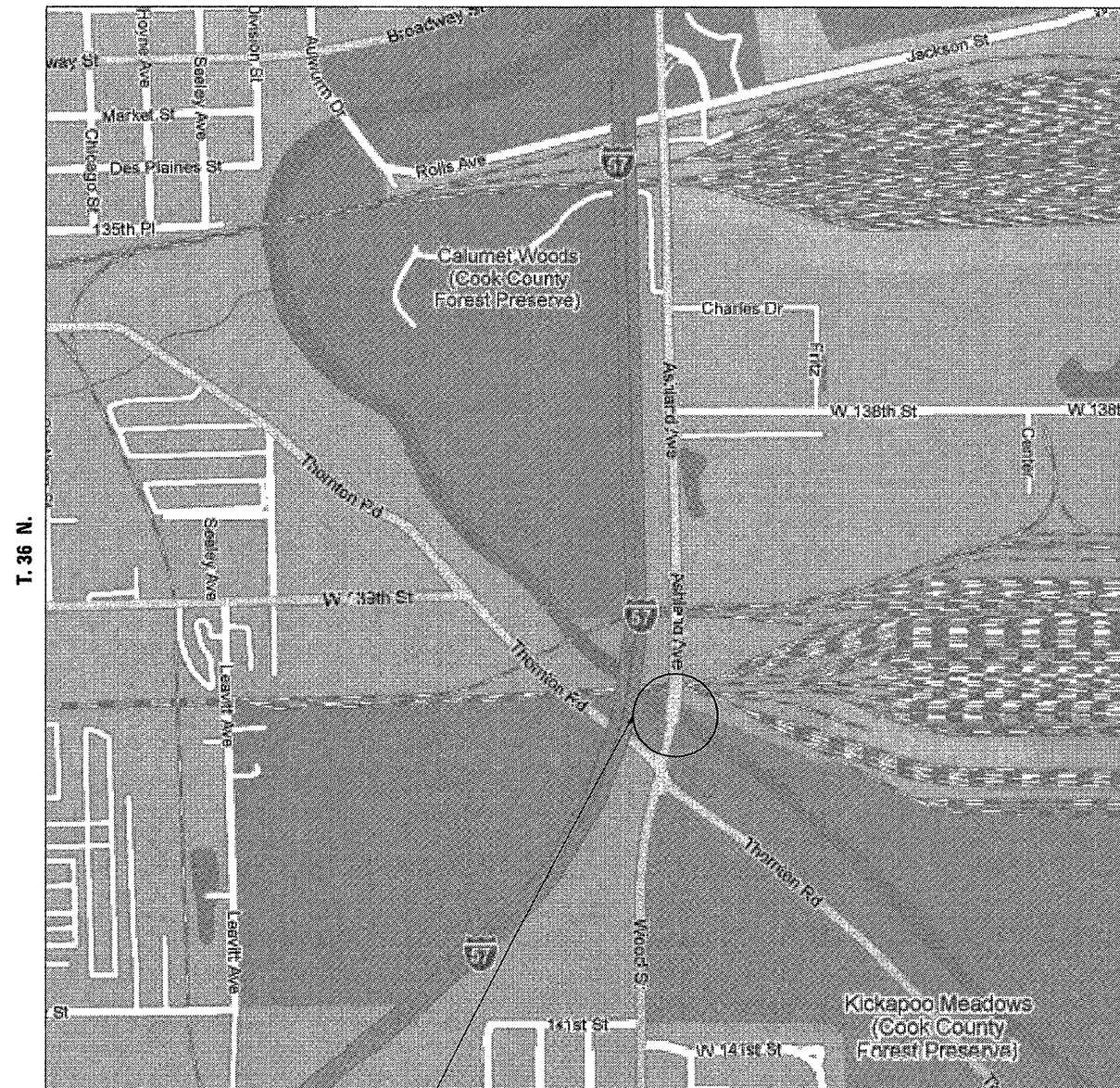


TRAFFIC DATA  
 SPEED LIMIT = 40 MPH  
 2006 ADT = 13,200



R. 14 E.



LOCATION 1 - COOK COUNTY  
 STRUCTURE NUMBER: 016-0301  
 ASHLAND AVENUE OVER LITTLE CALUMET RIVER  
 LOCATED IN THORNTON TOWNSHIP  
 VILLAGE OF DIXMOOR

COMPANY NAME: HRGreen, Inc.  
 PROJECT CONTACT: SPERNA1  
 CLIENT: HRGreen, Inc.  
 DATE PLOTTED: 2/14/2012 8:35:40 PM  
 FILE NAME: 86000196.03-60R55-location.dgn  
 PLOT DRIVER: pcf.plt  
 PEN TABLE: STANDARD-TRANS.TBL



USER NAME = SPERNA1	DESIGNED - C. HARTKE	REVISED -
	DRAWN - S. PERNAL	REVISED -
PLOT SCALE = N/A	CHECKED - T. HAMILTON	REVISED -
PLOT DATE = 2/14/2012	DATE - 2/14/12	REVISED -

STATE OF ILLINOIS  
 DEPARTMENT OF TRANSPORTATION

LOCATION MAP  
 SCOUR COUNTERMEASURES

SCALE: N/A SHEET NO. 1 OF 1 SHEETS STA. TO STA.

F.A. RTE.	SECTION	COUNTY	TOTAL SHEETS	SHEET NO.
2857	2011-214-1	COOK	12	4
FED. ROAD DIST. NO. [ILLINOIS] FED. AID PROJECT			CONTRACT NO. 60R55	