

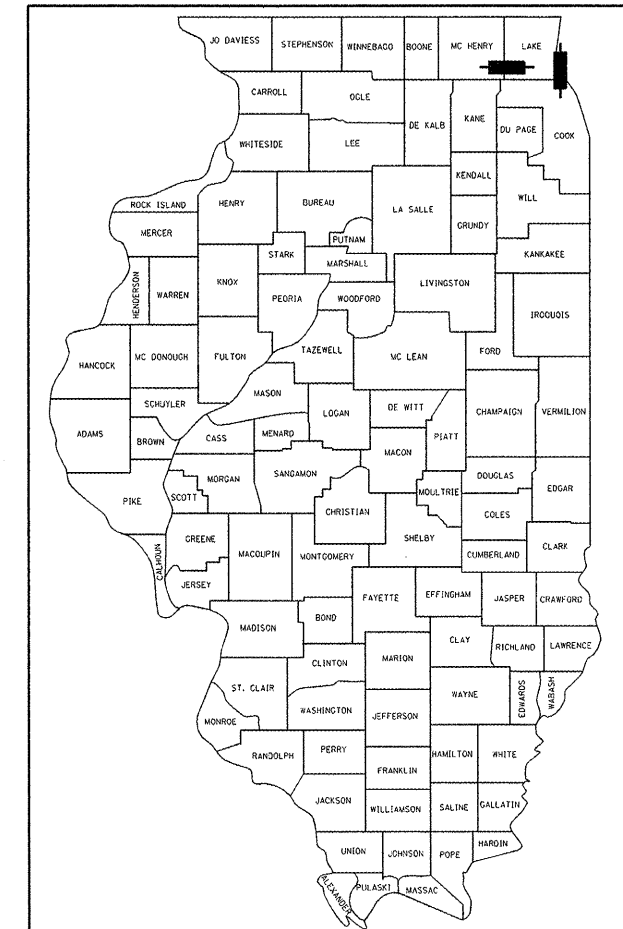
F.A. RTE.	SECTION	COUNTY	TOTAL SHEETS	SHEET NO.
VAR.	2011-222-1	LAKE	16	1
FED. ROAD DIST. NO 1		ILLINOIS	CONTRACT NO. 60R83	

STATE OF ILLINOIS
DEPARTMENT OF TRANSPORTATION
DIVISION OF HIGHWAYS

**PROPOSED
HIGHWAY PLANS**

VARIOUS ROUTES
SECTION: 2011-222-1
VARIOUS LOCATIONS IN LAKE COUNTY
SCOUR COUNTERMEASURES
LAKE COUNTY
C-91-225-12

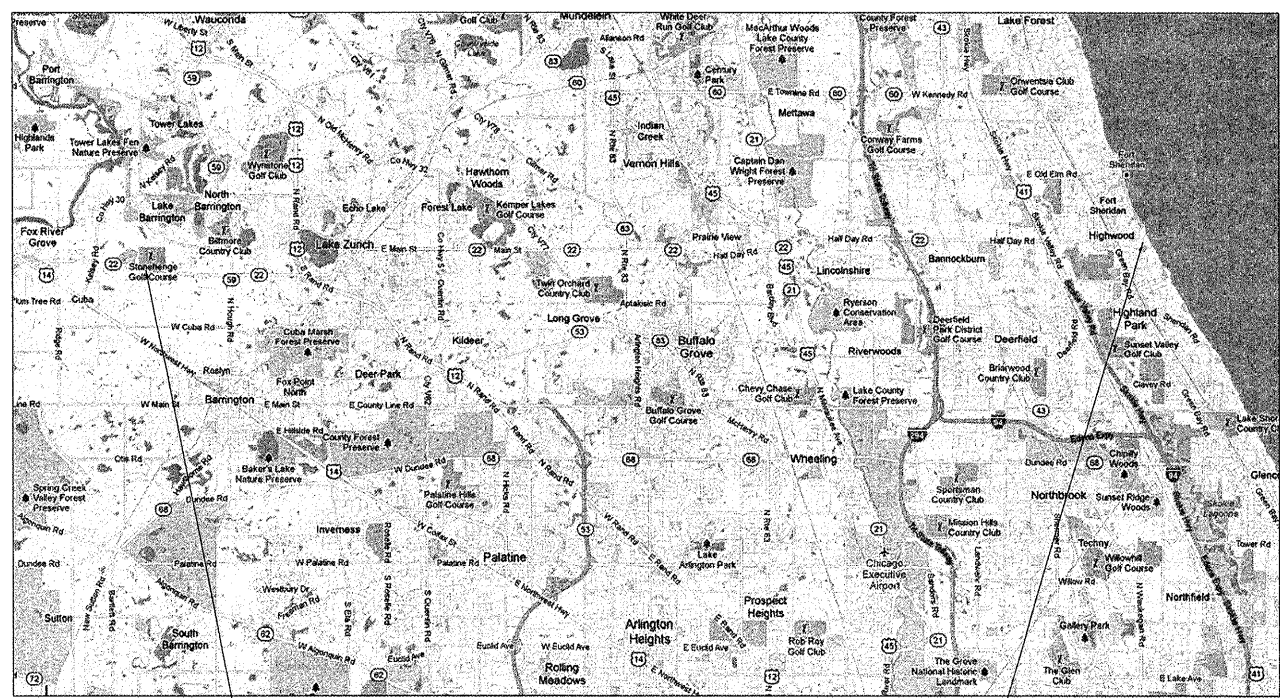
D-91-225-12



LOCATION OF SECTION INDICATED THUS: — ■ —

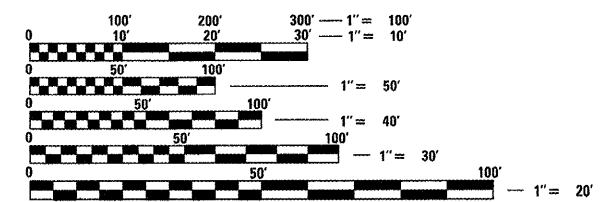
FOR INDEX OF SHEETS, SEE SHEET NO. 2
FOR TRAFFIC DATA, SEE SHEET NO. 4

IMPROVEMENTS LOCATED IN THE
VILLAGE OF LAKE BARRINGTON
AND CITY OF HIGHLAND PARK



LOCATION 1: S.N. 049-0079, ILLINOIS ROUTE 22
OVER FLINT CREEK

LOCATION 2: S.N. 049-0081, SHERIDAN ROAD
OVER BOYINGTON RAVINE



FULL SIZE PLANS HAVE BEEN PREPARED USING STANDARD
ENGINEERING SCALES. REDUCED SIZED PLANS WILL NOT
CONFORM TO STANDARD SCALES. IN MAKING MEASUREMENTS
ON REDUCED PLANS, THE ABOVE SCALES MAY BE USED.

J.U.L.I.E.
JOINT UTILITY LOCATION INFORMATION FOR EXCAVATION
1-800-892-0123
OR 811

DISTRICT ONE - PLAN PREPARATION ENGINEER: KEN ENG: (847) 705-4247

STATE OF ILLINOIS
DEPARTMENT OF TRANSPORTATION
DIVISION OF HIGHWAYS

SUBMITTED FEBRUARY 14, 2012
Diana M. O'Keefe
DEPUTY DIRECTOR OF HIGHWAYS, REGION ENGINEER

March 23, 2012
John D. Baranzelli, P.E.
actg ENGINEER OF DESIGN AND ENVIRONMENT

March 23, 2012
William R. Flynn
actg DIRECTOR OF HIGHWAYS, CHIEF ENGINEER

PROFESSIONAL ENGINEER'S SIGN & SEAL

Christopher M. Harpe

EXPIRES: 11-30-13

PRINTED BY THE AUTHORITY
OF THE STATE OF ILLINOIS

CONTRACT NO. 60R83