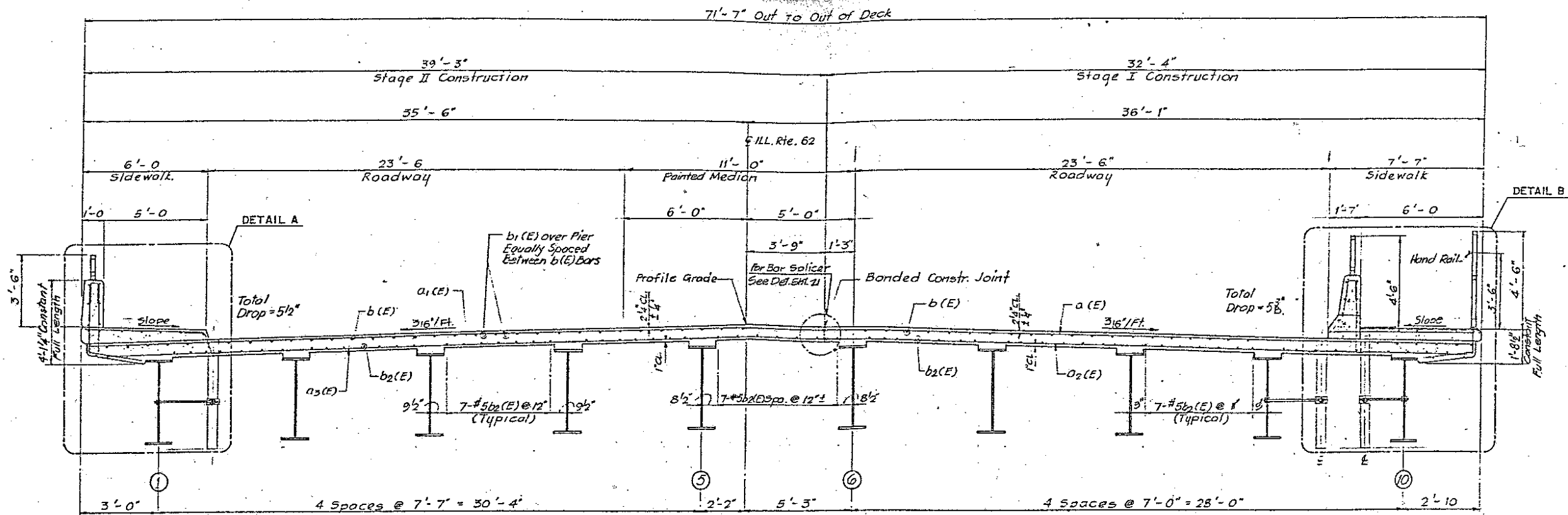
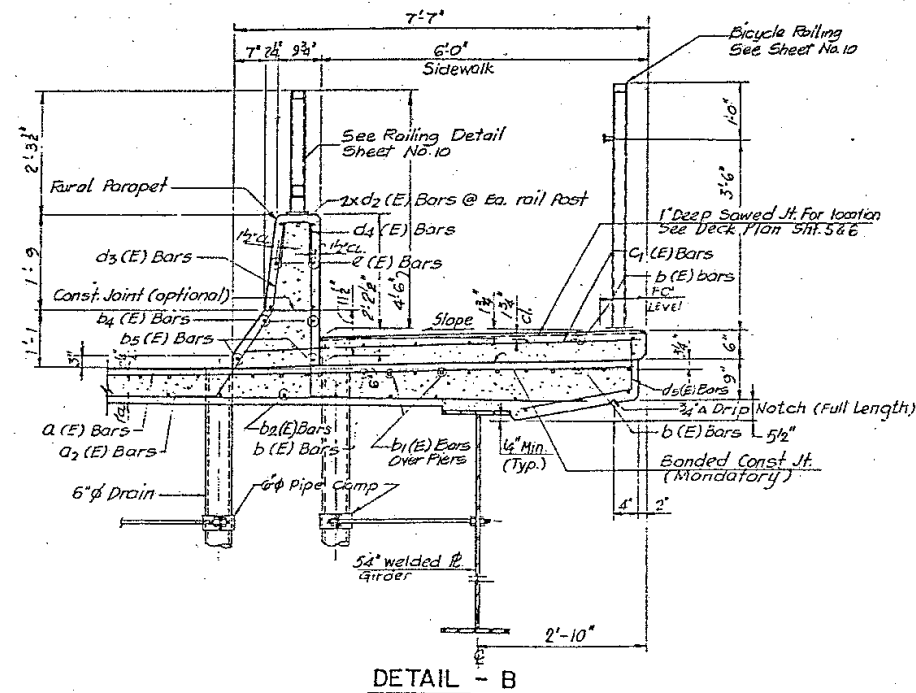
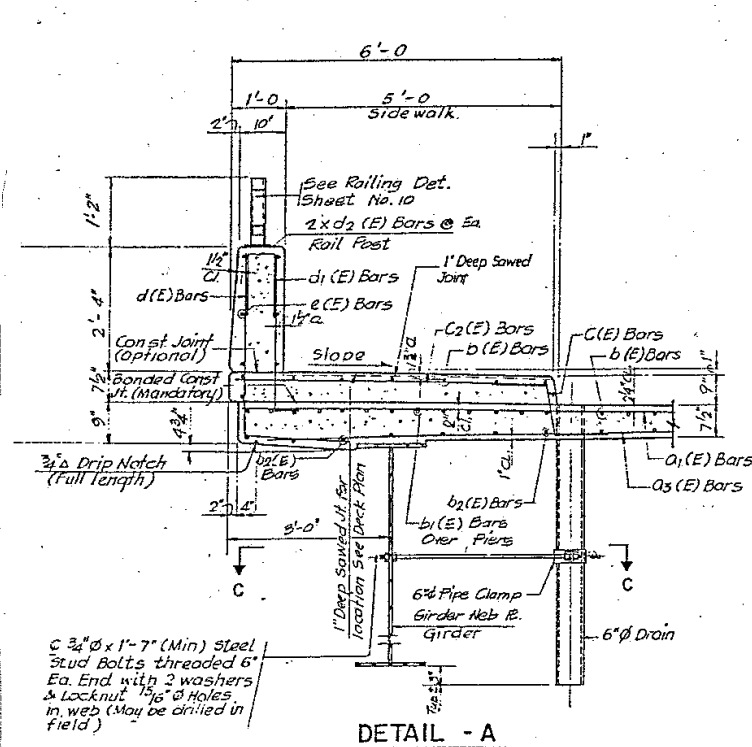


ROUTE VARIOUS	SECTION 2011-227-1	COUNTY MCHENRY	TOTAL SHEETS 53	SHEET NUMBER 50
------------------	-----------------------	-------------------	--------------------	--------------------

CONTRACT NO. 60R91



**CROSS SECTION (Looking East)**  
 Note: All edges shall have 3/4" chamfer.



**FOR INFORMATION ONLY**

**ILLINOIS DEPARTMENT OF  
 TRANSPORTATION**  
  
**EXISTING PLAN & CROSS SECTION  
 LOCATION 21 (SN 056-0059)  
 IL 62 OVER FOX RIVER  
 SHEET 2 OF 2**