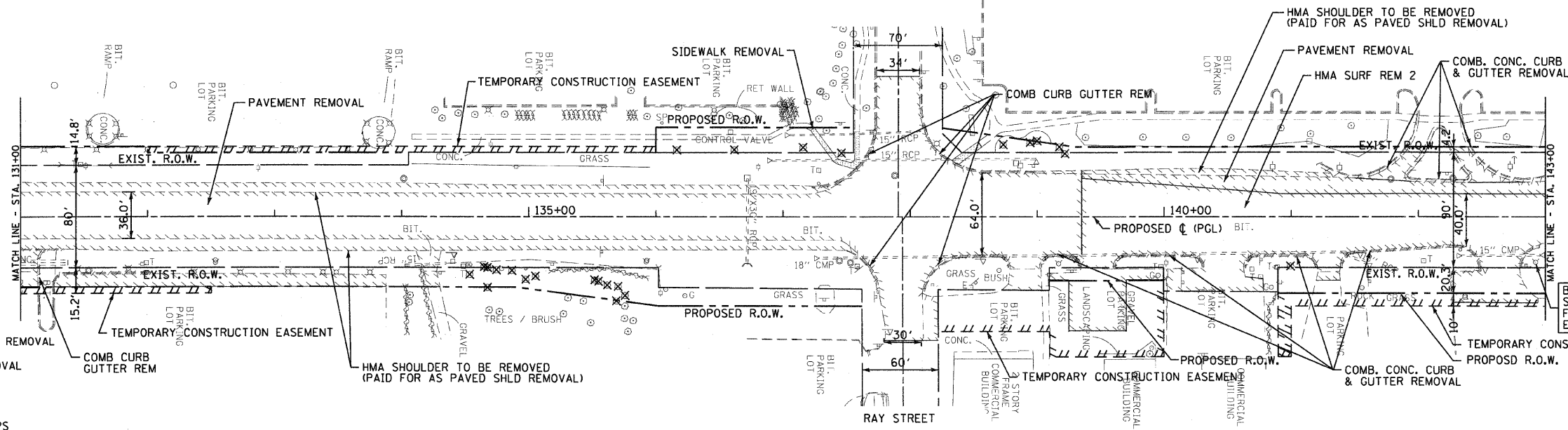
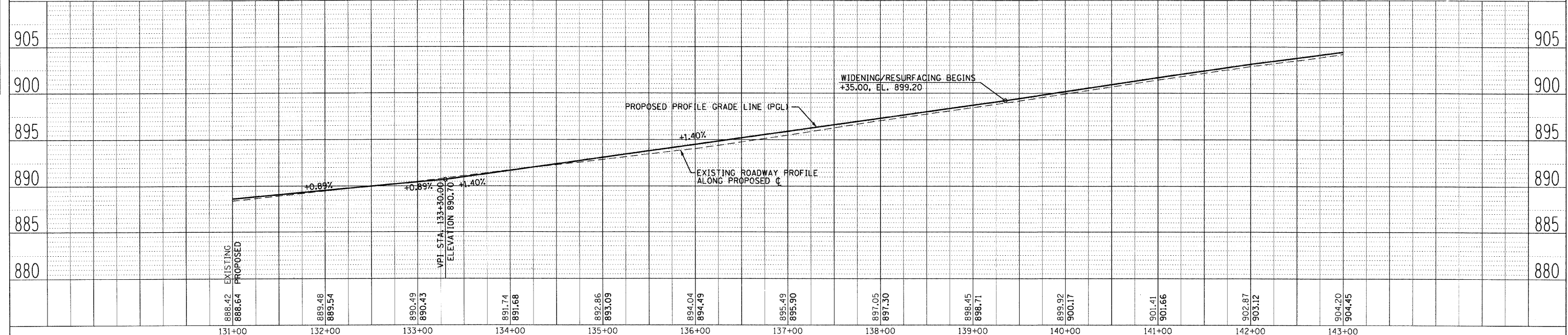
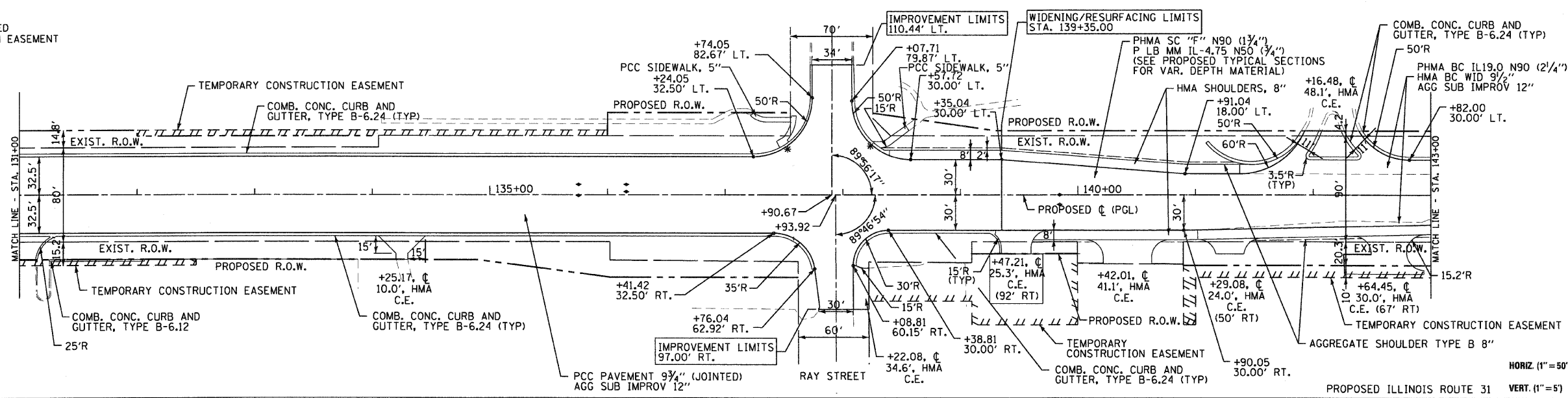


| | | | | |
|----------------------------|---------|---------------------------|--------------|-----------|
| F.A.P. RTE. | SECTION | COUNTY | TOTAL SHEETS | SHEET NO. |
| 336 | 112R-N | McHENRY | 266 | 27 |
| STA. 131+00 TO STA. 143+00 | | ILLINOIS FED. AID PROJECT | | |
| CONTRACT NO. 62537 | | | | |



- LEGEND**
- PAVEMENT REMOVAL OR DRIVEWAY PAVEMENT REMOVAL OR BIT. SURFACE REMOVAL
 - COMBINATION CURB AND GUTTER REMOVAL OR CURB REMOVAL (AS NOTED)
 - SIDEWALK REMOVAL
 - * DETECTABLE WARNINGS ON CURB RAMPS

NOTE:
 1) REFER TO PLAT OF HIGHWAYS FOR PROPOSED RIGHT-OF-WAY AND TEMPORARY CONSTRUCTION EASEMENT STATION AND OFFSET LOCATION



PLAN AND PROFILE IL. RTE. 31 STA. 131+00 TO STA. 143+00

| | | | |
|------|----|------------|-----|
| DATE | BY | PROF. ILL. | NO. |
| | | | |

| | | | |
|------|----|------------|-----|
| DATE | BY | PROF. ILL. | NO. |
| | | | |