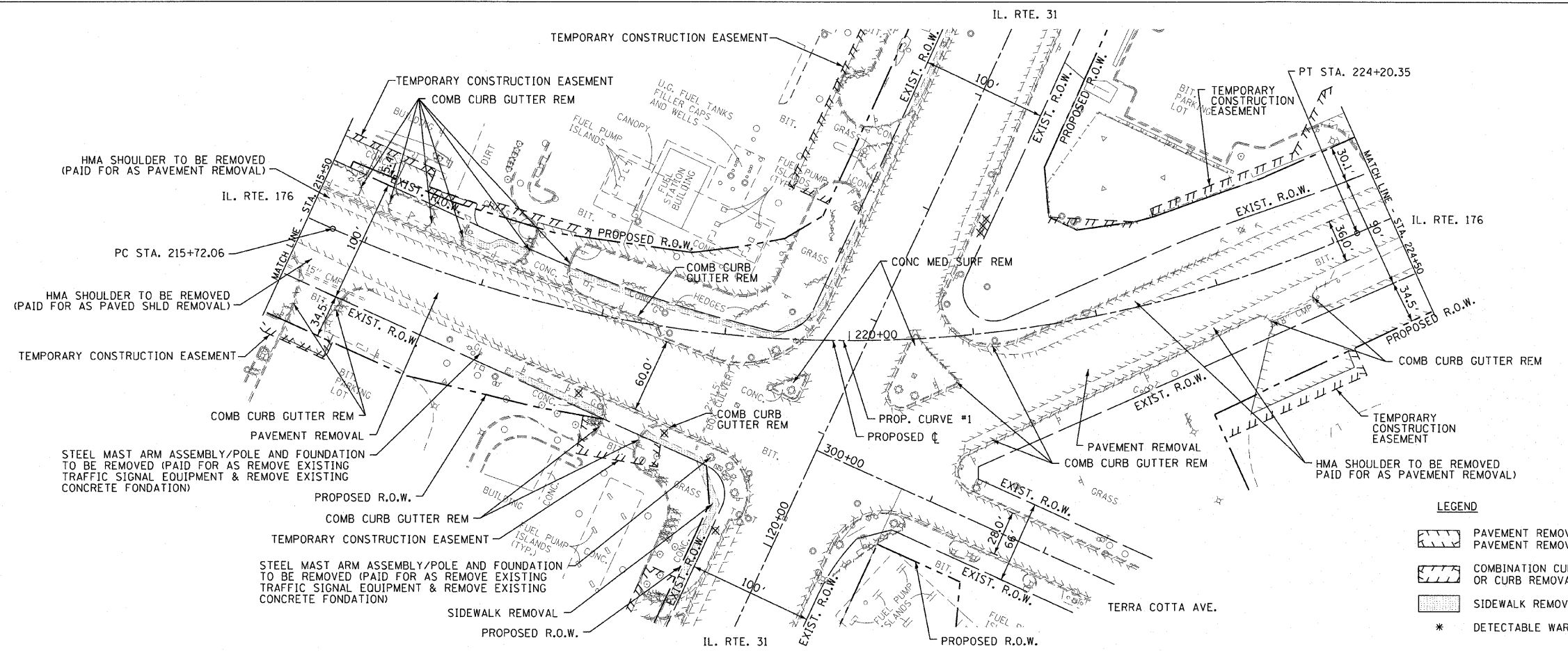


F.A.P. RTE.	SECTION	COUNTY	TOTAL SHEETS	SHEET NO.
336	112R-N	McHENRY	266	30
STA. 215+50		TO STA. 224+50		
FED. ROAD DIST. NO.		ILLINOIS		FED. AID PROJECT
CONTRACT NO. 62537				

PLAN	DATE
SOURCES	
PLOTTED	
REVISIONS	
BY	
DATE	
NO.	

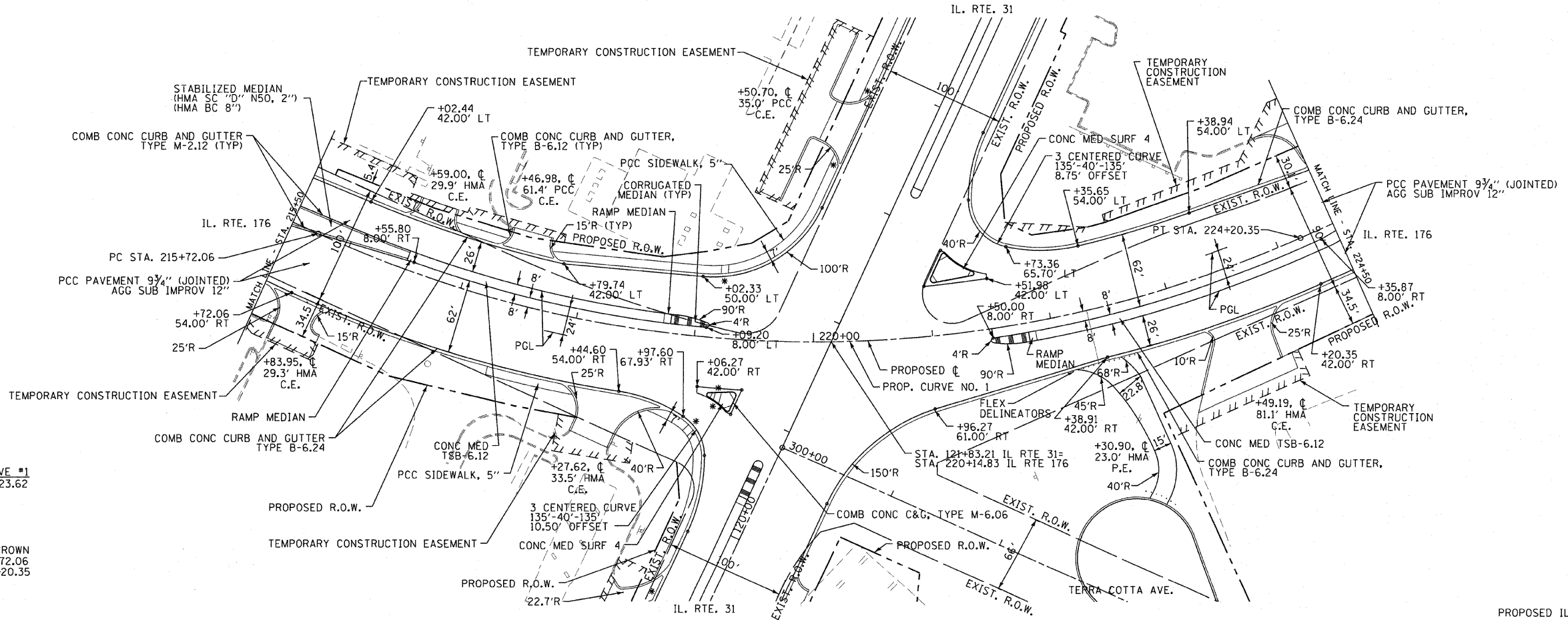


LEGEND

	PAVEMENT REMOVAL OR DRIVEWAY PAVEMENT REMOVAL OR BIT. SURFACE REMOVAL
	COMBINATION CURB AND GUTTER REMOVAL OR CURB REMOVAL (AS NOTED)
	SIDEWALK REMOVAL
*	DETECTABLE WARNINGS ON CURB RAMPS

EXISTING ILLINOIS ROUTE 176

PROFILE	DATE
REVISIONS	
PLOTTED	
REVISIONS	
BY	
DATE	
NO.	



NOTE:
1) REFER TO PLAT OF HIGHWAYS FOR PROPOSED RIGHT-OF-WAY AND TEMPORARY CONSTRUCTION STATION AND OFFSET LOCATION

PROPOSED CURVE #1
P.I. STA= 220+23.62
Δ= 48°36'12"
R= 1,000.00
T= 451.55'
L= 848.29'
E= 97.22'
S.E.= NORMAL CROWN
P.C. STA= 215+72.06
P.T. STA= 224+20.35

