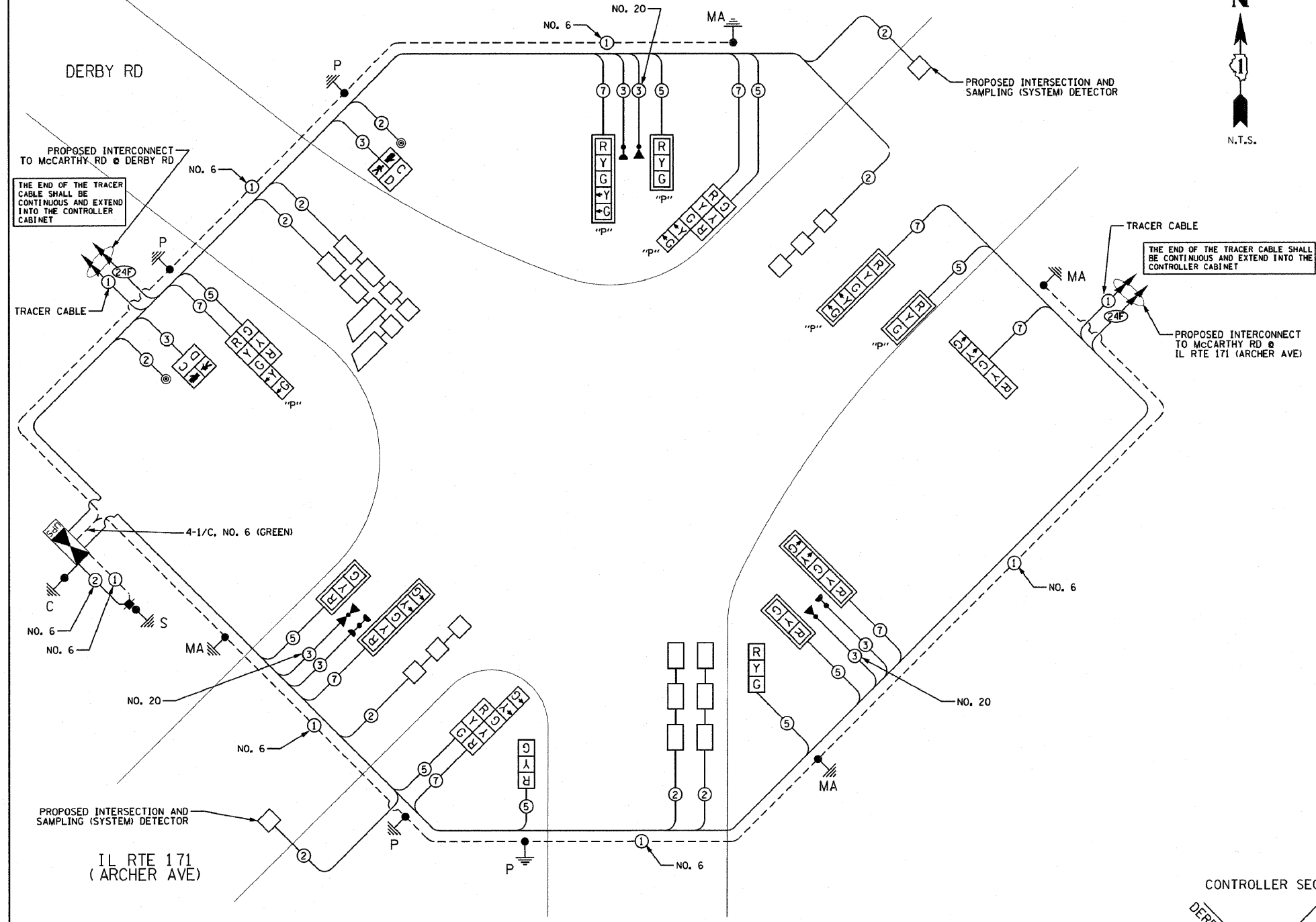


PROPOSED CABLE PLAN



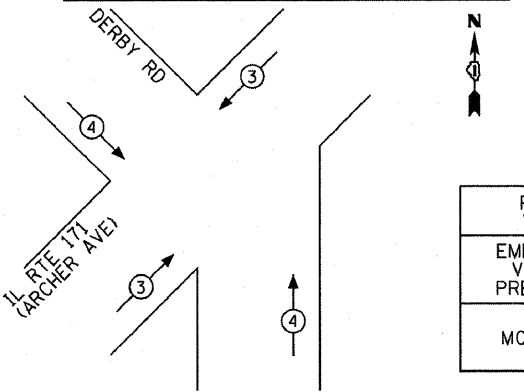
SCHEDULE OF QUANTITIES

QTY	UNIT	ITEM DESCRIPTION
13.5	SQ FT	SIGN PANEL - TYPE 1
25	SQ FT	SIGN PANEL - TYPE 2
1	EACH	SERVICE INSTALLATION, GROUND MOUNTED
571	FOOT	UNDERGROUND CONDUIT, GALVANIZED STEEL, 2" DIA
120	FOOT	UNDERGROUND CONDUIT, GALVANIZED STEEL, 2 1/2" DIA
145	FOOT	UNDERGROUND CONDUIT, GALVANIZED STEEL, 3" DIA
466	FOOT	UNDERGROUND CONDUIT, GALVANIZED STEEL, 4" DIA
4	EACH	HANDHOLE
2	EACH	HEAVY-DUTY HANDHOLE
2	EACH	DOUBLE HANDHOLE
1	EACH	FULL-ACTUATED CONTROLLER AND TYPE IV CABINET
1	EACH	TRANSCIVER - FIBER OPTIC
683	FOOT	ELECTRIC CABLE IN CONDUIT NO. 20 3/C, TWISTED, SHIELDED
185	FOOT	ELECTRIC CABLE IN CONDUIT, SIGNAL NO. 14 2C
866	FOOT	ELECTRIC CABLE IN CONDUIT, SIGNAL NO. 14 3C
1547	FOOT	ELECTRIC CABLE IN CONDUIT, SIGNAL NO. 14 5C
1724	FOOT	ELECTRIC CABLE IN CONDUIT, SIGNAL NO. 14 7C
1712	FOOT	ELECTRIC CABLE IN CONDUIT, LEAD-IN, NO. 14 1 PAIR
22	FOOT	ELECTRIC CABLE IN CONDUIT, SERVICE, NO. 6 2C
624	FOOT	ELECTRIC CABLE IN CONDUIT, EQUIPMENT GROUNDING CONDUCTOR, NO. 6 1C
1	EACH	TRAFFIC SIGNAL POST, GALVANIZED STEEL 10 FT.
1	EACH	TRAFFIC SIGNAL POST, GALVANIZED STEEL 14 FT.
2	EACH	TRAFFIC SIGNAL POST, GALVANIZED STEEL 16 FT.
1	EACH	STEEL MAST ARM ASSEMBLY AND POLE, 18 FT.
1	EACH	STEEL MAST ARM ASSEMBLY AND POLE, 22 FT.
1	EACH	STEEL MAST ARM ASSEMBLY AND POLE, 30 FT.
1	EACH	STEEL MAST ARM ASSEMBLY AND POLE, 34 FT.
20	FOOT	CONCRETE FOUNDATION, TYPE A
4	FOOT	CONCRETE FOUNDATION, TYPE C
47	FOOT	CONCRETE FOUNDATION, TYPE E 30-INCH DIAMETER
2	EACH	SIGNAL HEAD, LED, 1-FACE, 3-SECTION, MAST ARM MOUNTED
1	EACH	SIGNAL HEAD, LED, 1-FACE, 5-SECTION, BRACKET MOUNTED
2	EACH	SIGNAL HEAD, LED, 1-FACE, 5-SECTION, MAST ARM MOUNTED
1	EACH	SIGNAL HEAD, LED, 2-FACE, 1-3 SECTION, 1-5 SECTION, BRACKET MOUNTED
2	EACH	OPTICALLY PROGRAMMED SIGNAL HEAD, LED, 1-FACE, 3-SECTION, BRACKET MOUNTED
2	EACH	OPTICALLY PROGRAMMED SIGNAL HEAD, LED, 1-FACE, 3-SECTION, MAST ARM MOUNTED
2	EACH	OPTICALLY PROGRAMMED SIGNAL HEAD, LED, 1-FACE, 5-SECTION, MAST ARM MOUNTED
2	EACH	COMBINATION SIGNAL HEAD, LED, 2-FACE, 1-5 SECTION OPTICALLY PROGRAMMED, 1-3 SECTION, BRACKET MOUNTED
2	EACH	PEDESTRIAN SIGNAL HEAD, LED, 1-FACE, BRACKET MOUNTED WITH COUNTDOWN TIMER
8	EACH	TRAFFIC SIGNAL BACKPLATE, LOUVERED,
8	EACH	INDUCTIVE LOOP DETECTOR
908	FOOT	DETECTOR LOOP, TYPE I
3	EACH	LIGHT DETECTOR
1	EACH	LIGHT DETECTOR AMPLIFIER
2	EACH	PEDESTRIAN PUSH-BUTTON
1	EACH	TEMPORARY TRAFFIC SIGNAL INSTALLATION
1	EACH	REMOVE EXISTING TRAFFIC SIGNAL EQUIPMENT
5	EACH	REMOVE EXISTING HANDHOLE
1	EACH	TEMPORARY TRAFFIC SIGNAL TIMING
1	EACH	UNINTERRUPTIBLE POWER SUPPLY SPECIAL

I.D.O.T. TRAFFIC SIGNAL INSTALLATION ELECTRICAL SERVICE REQUIREMENTS				TOTAL WATTAGE
TYPE	NO. LAMPS	WATTAGE (INCAND.)	% OPERATION	
SIGNAL (RED)	17	17	0.50	144.5
(YELLOW)	17	25	0.25	106.25
(GREEN)	17	15	0.25	63.75
ARROW	16	12	0.10	19.2
PED. SIGNAL	2	25	1.00	50.0
CONTROLLER	1	100	1.00	100.0
ILLUM. SIGN VIDEO SYSTEM			0.05	
FLASHER			0.50	
TOTAL =				483.7

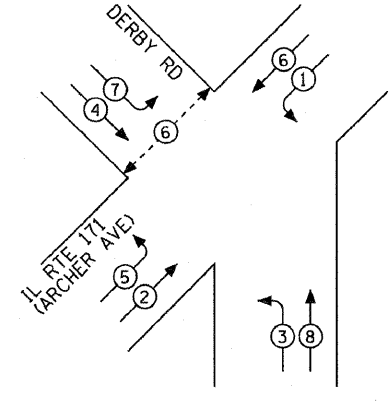
ENERGY COSTS TO:
VILLAGE OF LEMONT
 418 MAIN STREET
 LEMONT, ILLINOIS 60439
 ENERGY SUPPLY CONTACT: **MARK ANDERSON**
 PHONE: (815) 724-5988
 COMPANY: **COM. ED.**

EMERGENCY VEHICLE PREEMPTION SEQUENCE

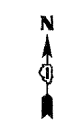


PROPOSED EMERGENCY VEHICLE PREEMPTORS	
EMERGENCY VEHICLE PREEMPTOR	MOVEMENT
3	↙ ↘
4	↖ ↗

CONTROLLER SEQUENCE



PHASE DESIGNATION DIAGRAM



LEGEND

- ⊙ → DUAL ENTRY PHASE
- ⊙ ← SINGLE ENTRY PHASE
- ⊙ OL OVERLAP
- ⊙ → PEDESTRIAN PHASE
- NUMBER REFERS TO ASSOCIATED PHASE

FILE NAME =	USER NAME =	DESIGNED - GJG	REVISED - 2/25/2011
...signal\59-cable ArchDerb.dgn		DRAWN - GJG	REVISED - 10/31/2011
	PLOT SCALE =	CHECKED - DMS	REVISED -
	PLOT DATE = 10/31/2011	DATE - 6/23/2010	REVISED -

STATE OF ILLINOIS
 DEPARTMENT OF TRANSPORTATION

CABLE PLAN, PHASE DESIGNATION DIAGRAM,
 EVP SEQUENCE & SCHEDULE OF QUANTITIES
 IL RTE 171 (ARCHER AVE) AT DERBY RD

SCALE: NONE	SHEET NO. OF SHEETS	STA. TO STA.
-------------	---------------------	--------------

KLOA
 Kenig, Lindgren, O'Hara, Aboona, Inc.
 9575 West Higgins Road, Suite 400
 Rosemont, Illinois 60018
 P: (847) 518-8990 F: (847) 518-9887
 PROJECT # 10-001

F.A. RTE.	SECTION	COUNTY	TOTAL SHEETS	SHEET NO.
VAR.	02-00055-00-WR	COOK	84	59
CONTRACT NO. 63557				
FED. ROAD DIST. NO. [ILLINOIS] FED. AID PROJECT HPP-M-8003504				