

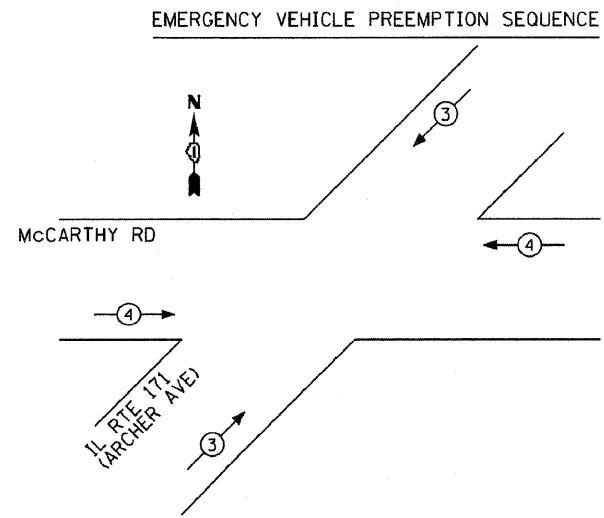
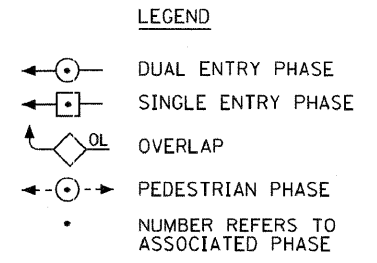
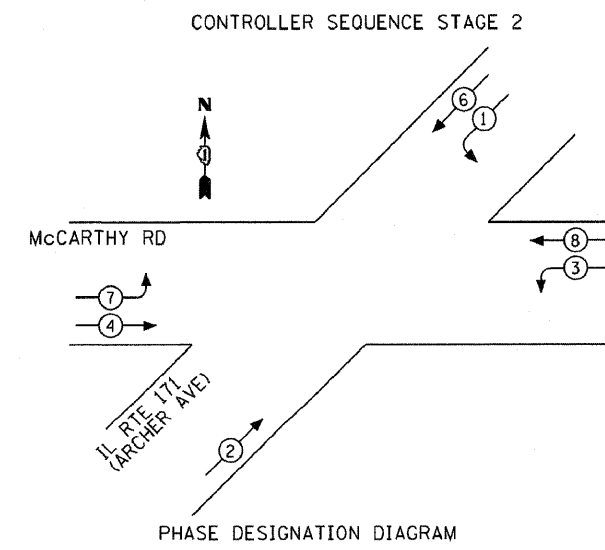
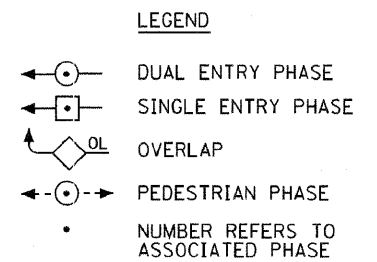
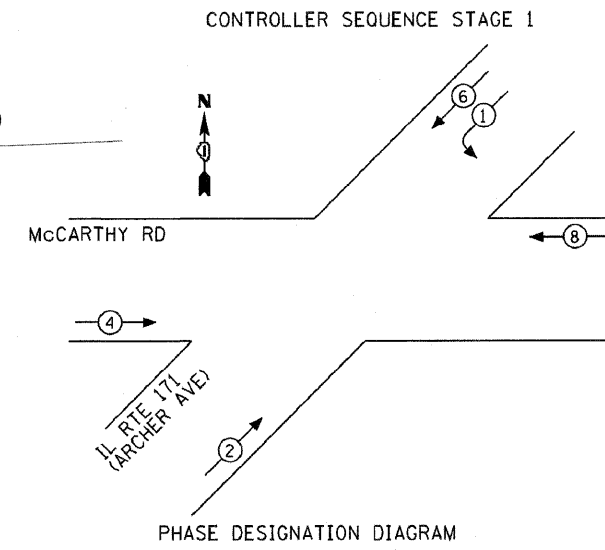
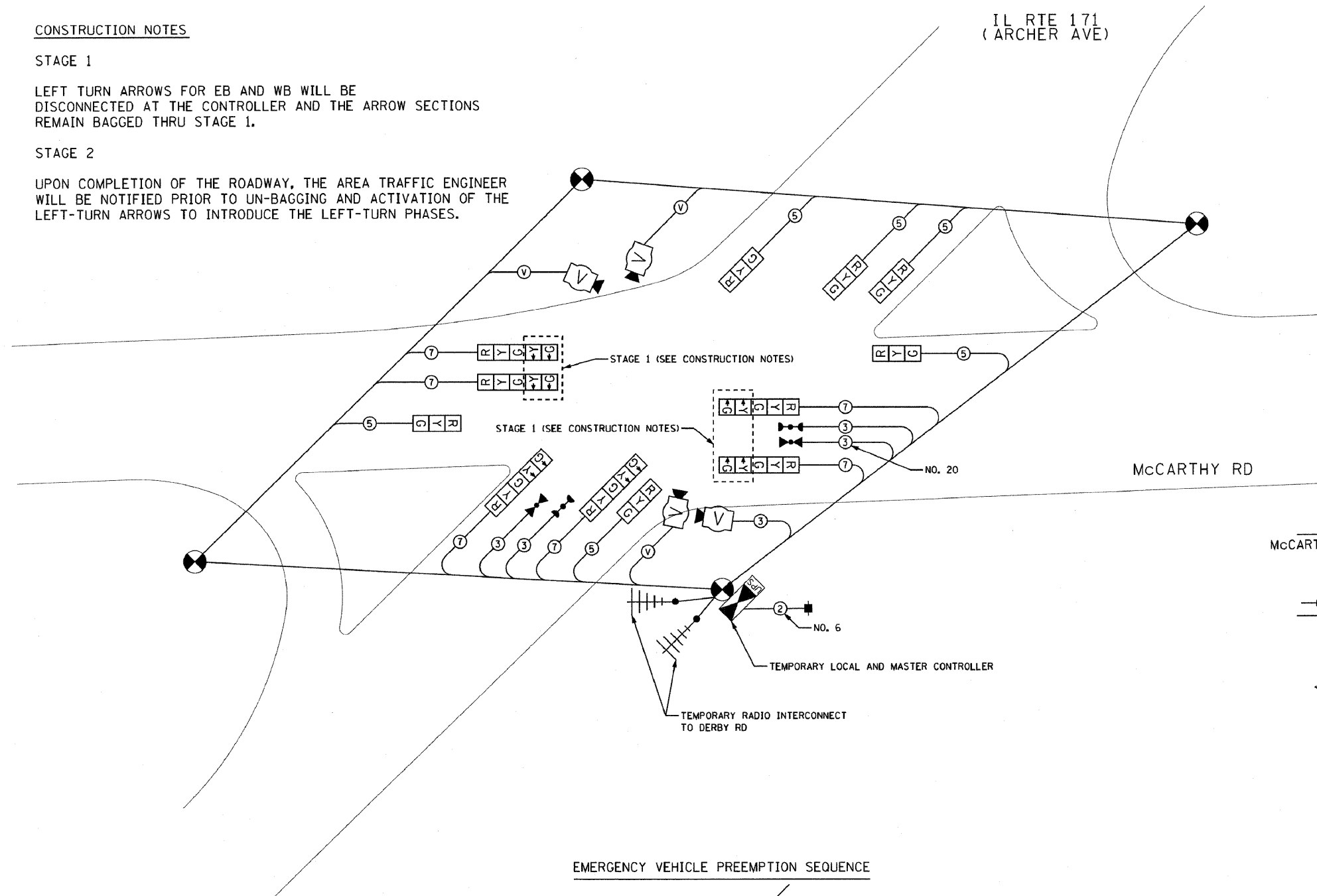
CONSTRUCTION NOTES

STAGE 1

LEFT TURN ARROWS FOR EB AND WB WILL BE DISCONNECTED AT THE CONTROLLER AND THE ARROW SECTIONS REMAIN BAGGED THRU STAGE 1.

STAGE 2

UPON COMPLETION OF THE ROADWAY, THE AREA TRAFFIC ENGINEER WILL BE NOTIFIED PRIOR TO UN-BAGGING AND ACTIVATION OF THE LEFT-TURN ARROWS TO INTRODUCE THE LEFT-TURN PHASES.



PROPOSED EMERGENCY VEHICLE PREEMPTORS		
EMERGENCY VEHICLE PREEMPTOR	3	4
MOVEMENT		

I.D.O.T. TRAFFIC SIGNAL INSTALLATION ELECTRICAL SERVICE REQUIREMENTS					TOTAL WATTAGE
TYPE	NO. LAMPS	WATTAGE INCAND.	LED	% OPERATION	
SIGNAL (RED)	12	17	0.50		102.0
(YELLOW)	12	25	0.25		75.0
(GREEN)	12	15	0.25		45.0
ARROW	12	12	0.10		14.4
PED. SIGNAL		25	1.00		
CONTROLLER	1	100	1.00		100.0
ILLUM. SIGN			0.05		
VIDEO SYSTEM	1	150	1.00		150.0
FLASHER			0.50		
TOTAL =					486.4

ENERGY COSTS TO: VILLAGE OF LEMONT, 418 MAIN STREET, LEMONT, ILLINOIS 60439

ENERGY SUPPLY CONTACT: MARK ANDERSON, PHONE: (815) 724-5988, COMPANY: COM. ED.

FILE NAME = ...signal171-tempcab ArchMcC.dgn	USER NAME =	DESIGNED - GJG	REVISED - 2/25/2011
		DRAWN - GJG	REVISED -
		CHECKED - DMS	REVISED -
		DATE - 6/23/2010	REVISED -

STATE OF ILLINOIS DEPARTMENT OF TRANSPORTATION

TEMPORARY CABLE PLAN, PHASE DESIGNATION DIAGRAM & EVP SEQUENCE			
IL RTE 171 (ARCHER AVE) AT McCARTHY RD			
SCALE: NONE	SHEET NO. OF SHEETS	STA. TO STA.	

KLOA Kanig, Lindgren, O'Hara, Aboona, Inc.

9575 West Higgins Road, Suite 400
Rosemont, Illinois 60018
P: (847) 518-9980 F: (847) 518-9987

PROJECT # 10-001

F.A. RTE.	SECTION	COUNTY	TOTAL SHEETS	SHEET NO.
VAR.	02-00055-00-WR	COOK	84	62
CONTRACT NO. 63557			FED. ROAD DIST. NO. ILLINOIS FED. AID PROJECT HPP-M-80035041	