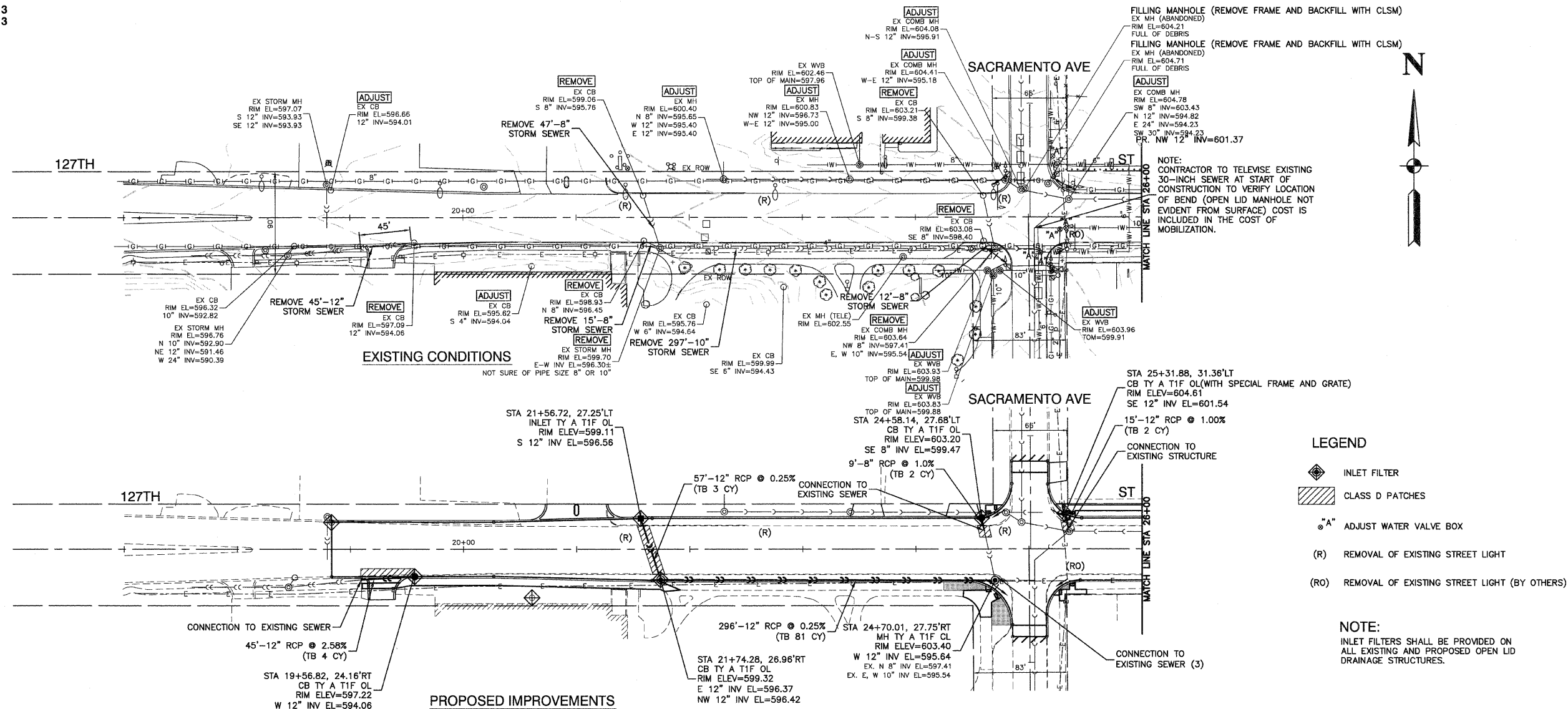


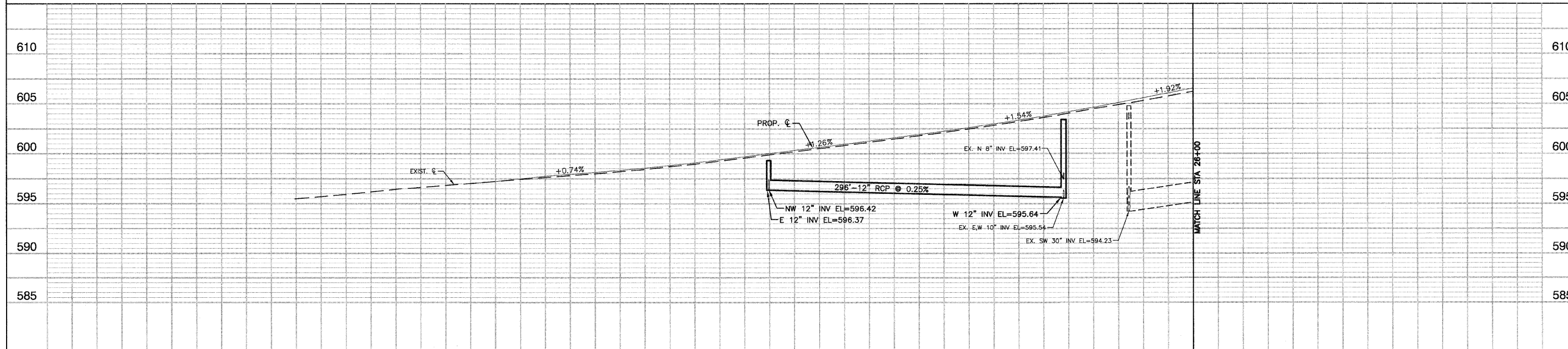
SECTION 25, TOWNSHIP 37, RANGE 13
SECTION 36, TOWNSHIP 37, RANGE 13



LEGEND

- INLET FILTER
- CLASS D PATCHES
- ADJUST WATER VALVE BOX
- REMOVAL OF EXISTING STREET LIGHT
- REMOVAL OF EXISTING STREET LIGHT (BY OTHERS)

NOTE:
INLET FILTERS SHALL BE PROVIDED ON ALL EXISTING AND PROPOSED OPEN LID DRAINAGE STRUCTURES.



FILE NAME = 09527-STRM-01 - PLPR01	USER NAME =	DESIGNED -- HLG/TAG	REVISED --	STATE OF ILLINOIS DEPARTMENT OF TRANSPORTATION		FAP 0344 (127TH STREET) AT SACRAMENTO AVENUE DRAINAGE & UTILITIES		F.A.U. RTE.	SECTION	COUNTY	TOTAL SHEETS	SHEET NO.
		CHECKED -- HLG	REVISED --					0344	06-00175-00-TL	COOK	48	10
		DRAWN -- AG/LTL	REVISED --					CONTRACT NO. 63613				
		PLOT DATE = 02-22-12	CHECKED -- AG					REVISED --	SCALE: H 1" = 50' V 1" = 5' SHEET NO. 10 OF 48 SHEETS STA. TO STA.			
								FED. ROAD DIST. NO. 1	ILLINOIS	FED. AID PROJECT F-0344 (041)		