

F. A. U. DIST.	SECTION	COUNTY	TOTAL SHEETS	SHEET NO.
2614	11-00102-00-RS	DU PAGE	12	1
FED. ROAD DIST. NO. 1		ILLINOIS	FED. AID PROJECT	

CONTRACT NO. 63673

**STATE OF ILLINOIS  
DEPARTMENT OF TRANSPORTATION  
DIVISION OF HIGHWAYS**

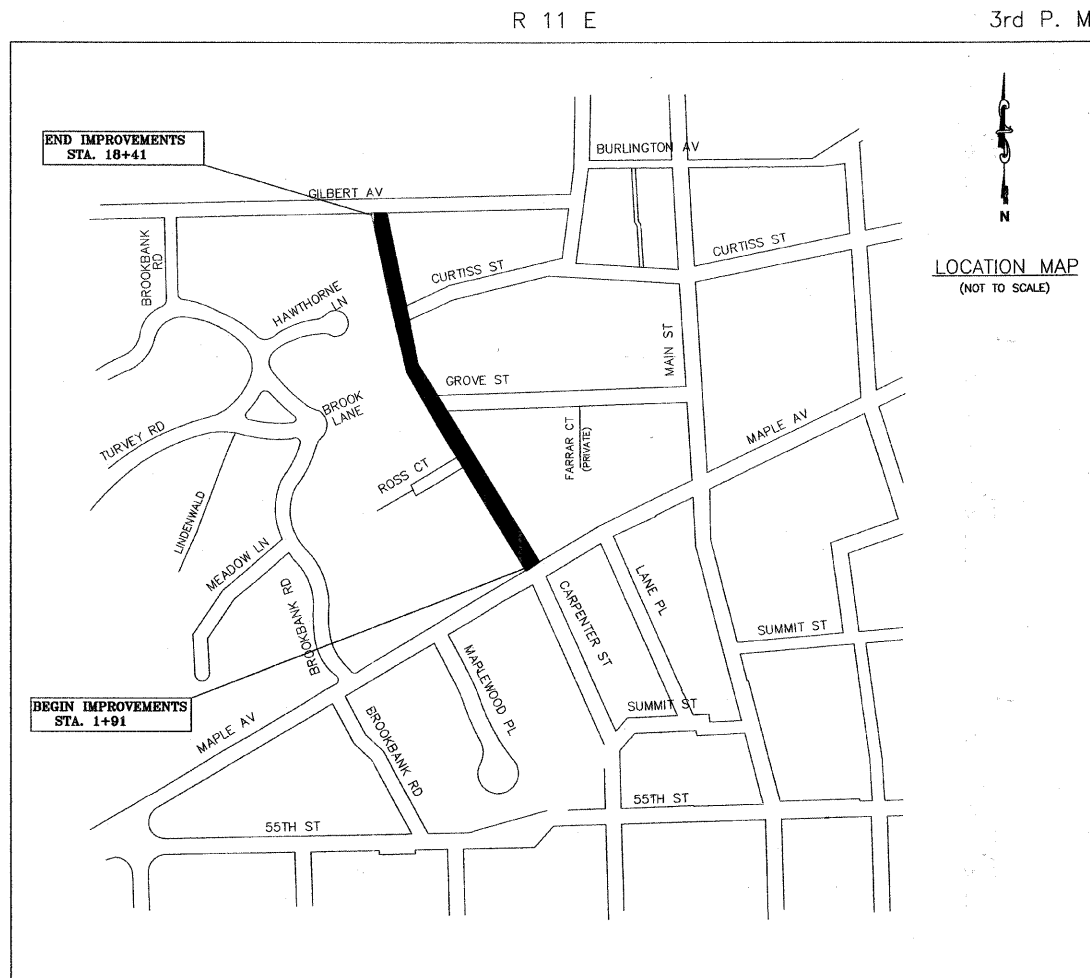
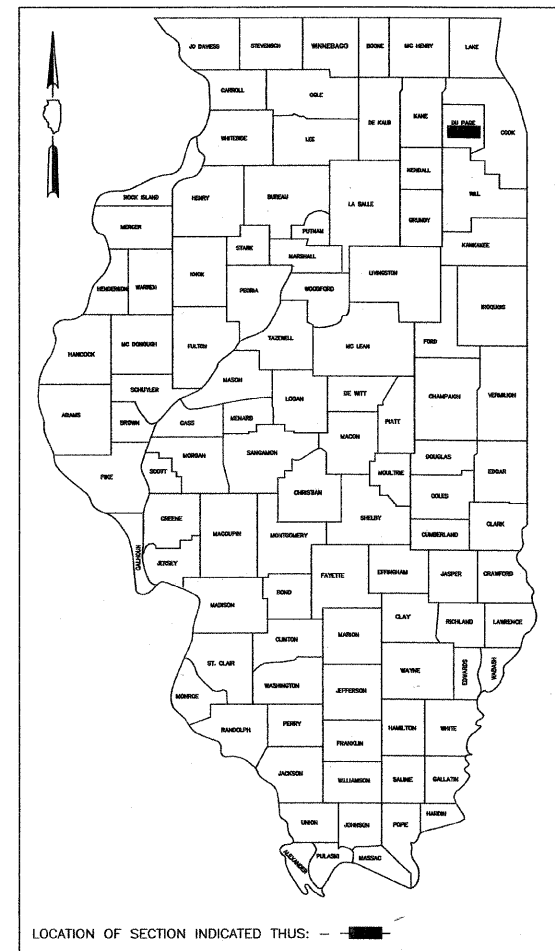
**PLANS FOR PROPOSED  
FEDERAL AID HIGHWAY  
F.A.U. ROUTE 2614 (CARPENTER STREET)  
MAPLE AVENUE (FAU 1487) TO GILBERT AVENUE (FAU 1498)  
ROADWAY RESURFACING  
SECTION: 11-00102-00-RS  
PROJECT: M-9003 (871)  
JOB: C-91-105-12  
VILLAGE OF DOWNERS GROVE  
DU PAGE COUNTY**

INDEX OF SHEETS

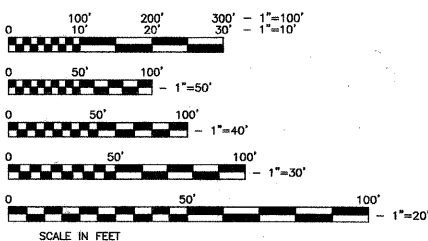
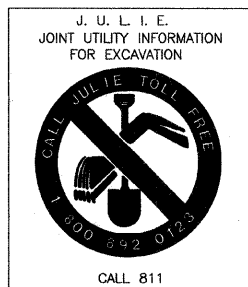
SHEET NO.	DESCRIPTION
1	COVER SHEET & LOCATION MAP
2	GENERAL NOTES & IDOT STANDARDS
3	SUMMARY OF QUANTITIES
4	TYPICAL SECTIONS
5	PLAN SHEET (STA 1+91 TO STA 7+00)
6	PLAN SHEET (STA 7+00 TO STA 13+00)
7	PLAN SHEET (STA 13+00 TO STA 18+41)
8	VILLAGE DETAILS
9	BD-32 BUTT JOINT AND HMA TAPER DETAILS
10	TC-10 IDOT DISTRICT ONE TYPICAL PAVEMENT MARKINGS DETAIL
11	BD-08 FRAMES AND LIDS ADJUSTMENT WITH MILLING
12	BD-22 PAVEMENT PATCHING FOR HMA SURFACED PAVEMENT

PROJECT LOCATED IN THE  
VILLAGE OF DOWNERS GROVE

CARPENTER STREET DESIGN DESIGNATION  
MINOR ARTERIAL  
DESIGN SPEED: 35 MPH  
ADT: 6,400



PROJECT LENGTH (GROSS AND NET)  
1650 FT = .31 MILE



PROGRAM AND OFFICE ENGINEER: CHARLES F. RIDDLE, P. E. 847-705-4406 SCHAMBOURG, IL

FULL SIZE PLANS HAVE BEEN PREPARED USING STANDARD ENGINEERING SCALES. REDUCED SIZE PLANS WILL NOT CONFORM TO STANDARD SCALES. IN MAKING MEASUREMENTS ON REDUCED PLANS, THE ABOVE SCALES CAN BE USED

Contract No. 63673

STATE OF ILLINOIS  
DEPARTMENT OF TRANSPORTATION  
DIVISION OF HIGHWAYS

APPROVED January 9, 2012  
*David Newlon*  
DIRECTOR OF PUBLIC WORKS, VILLAGE OF DOWNERS GROVE

PASSED FEBRUARY 10, 2012  
*Chet C. Holt*  
DIVISION 1 ENGINEER OF LOCAL ROADS AND STREETS

RELEASING FOR BID  
BASED ON LIMITED  
REVIEW FEBRUARY 14, 2012

*Diana M. O'Neil*  
DEPUTY DIRECTOR OF HIGHWAYS, REGION ONE ENGINEER



Scott A Vasko, P.E.  
#062-063237  
My License Expires 11/30/13

PRINTED BY THE AUTHORITY  
OF THE STATE OF ILLINOIS