

STATE OF ILLINOIS  
DEPARTMENT OF TRANSPORTATION  
DIVISION OF HIGHWAYS

**PLANS FOR PROPOSED  
FEDERAL AID HIGHWAY**  
**F.A.U. ROUTE 2614 (CARPENTER STREET)**  
**MAPLE AVENUE (FAU 1487) TO GILBERT AVENUE (FAU 1498)**  
**ROADWAY RESURFACING**  
**SECTION: 11-00102-00-RS**  
**PROJECT: M-9003 (871)**  
**JOB: C-91-105-12**  
**VILLAGE OF DOWNERS GROVE**  
**DU PAGE COUNTY**

F. A. U. NO.	SECTION	COUNTY	TOTAL SHEETS	SHEET NO.
2614	11-00102-00-RS	DU PAGE	12	1
FED. ROAD DIST. NO. 1		ILLINOIS	FED. AID PROJECT	

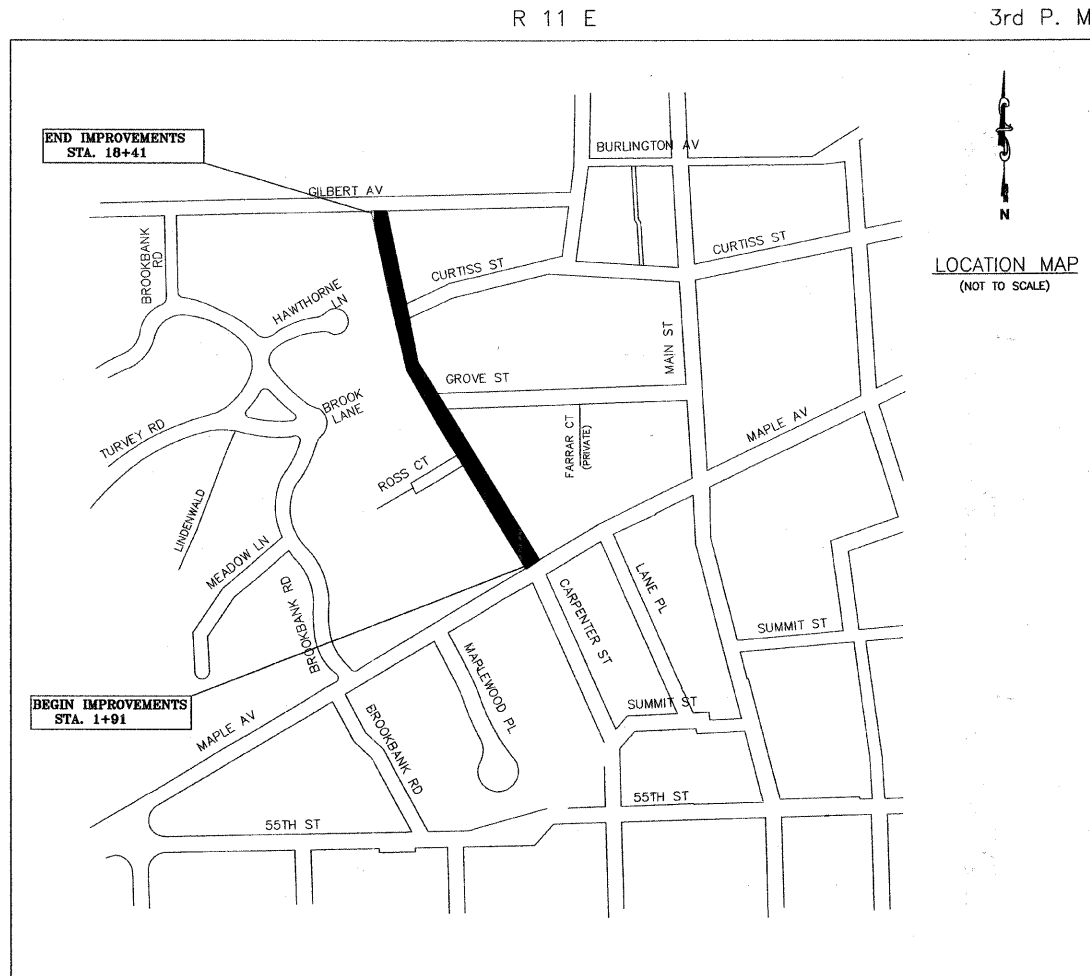
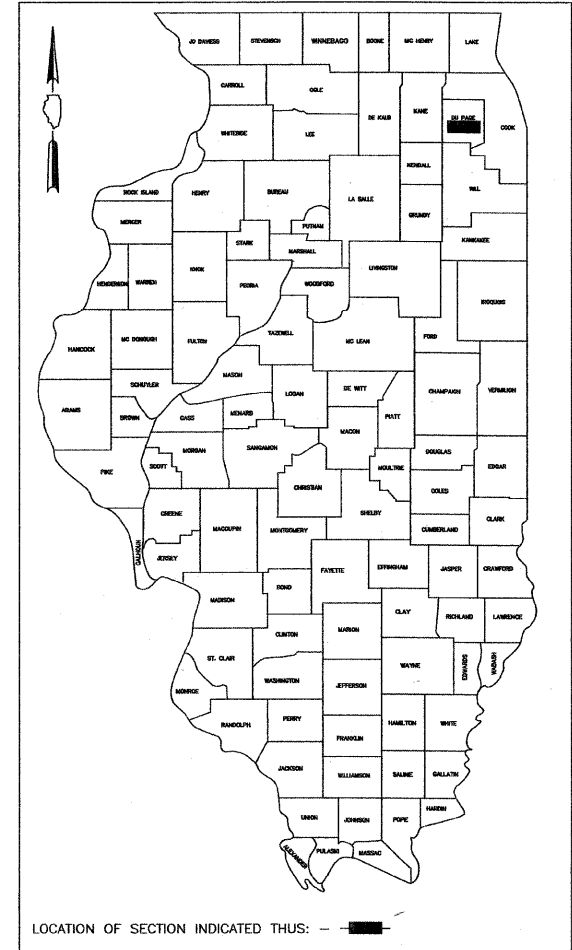
CONTRACT NO. 63673

INDEX OF SHEETS

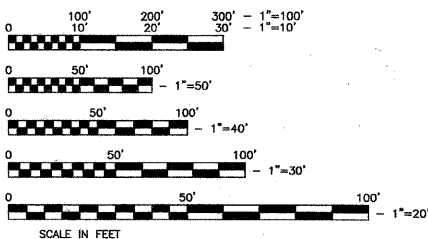
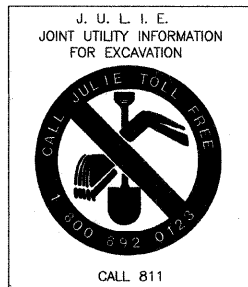
SHEET NO.	DESCRIPTION
1	COVER SHEET & LOCATION MAP
2	GENERAL NOTES & IDOT STANDARDS
3	SUMMARY OF QUANTITIES
4	TYPICAL SECTIONS
5	PLAN SHEET (STA 1+91 TO STA 7+00)
6	PLAN SHEET (STA 7+00 TO STA 13+00)
7	PLAN SHEET (STA 13+00 TO STA 18+41)
8	VILLAGE DETAILS
9	BD-32 BUTT JOINT AND HMA TAPER DETAILS
10	TC-10 IDOT DISTRICT ONE TYPICAL PAVEMENT MARKINGS DETAIL
11	BD-08 FRAMES AND LIDS ADJUSTMENT WITH MILLING
12	BD-22 PAVEMENT PATCHING FOR HMA SURFACED PAVEMENT

PROJECT LOCATED IN THE  
VILLAGE OF DOWNERS GROVE

CARPENTER STREET DESIGN DESIGNATION  
MINOR ARTERIAL  
DESIGN SPEED: 35 MPH  
ADT: 6,400



PROJECT LENGTH (GROSS AND NET)  
1650 FT = .31 MILE



PROGRAM AND OFFICE ENGINEER: CHARLES F. RIDDLE, P. E. 847-705-4406 SCHAMBOURG, IL

FULL SIZE PLANS HAVE BEEN PREPARED USING STANDARD ENGINEERING SCALES. REDUCED SIZE PLANS WILL NOT CONFORM TO STANDARD SCALES. IN MAKING MEASUREMENTS ON REDUCED PLANS, THE ABOVE SCALES CAN BE USED

Contract No. 63673

STATE OF ILLINOIS  
DEPARTMENT OF TRANSPORTATION  
DIVISION OF HIGHWAYS

APPROVED January 9, 2012  
*Nancy Newlon*  
DIRECTOR OF PUBLIC WORKS, VILLAGE OF DOWNERS GROVE

PASSED FEBRUARY 10, 2012  
*Chet C. Holt*  
DIVISION 1 ENGINEER OF LOCAL ROADS AND STREETS

RELEASING FOR BID  
BASED ON LIMITED  
REVIEW FEBRUARY 14, 2012

*Diana M. O'Neil*  
DEPUTY DIRECTOR OF HIGHWAYS, REGION ONE ENGINEER



Scott A Vasko, P.E.  
#062-063237  
My License Expires 11/30/13

PRINTED BY THE AUTHORITY  
OF THE STATE OF ILLINOIS

1. ALL REFERENCES TO THE 'VILLAGE' IN THESE GENERAL NOTES SHALL BE INTERPRETED TO MEAN THE VILLAGE OF DOWNERS GROVE.

2. ALL REFERENCES TO THE 'STANDARD SPECIFICATIONS' IN THESE GENERAL NOTES SHALL BE INTERPRETED TO MEAN THE 'STANDARD SPECIFICATIONS FOR ROAD AND BRIDGE CONSTRUCTION' ADOPTED BY THE ILLINOIS DEPARTMENT OF TRANSPORTATION (IDOT) ON JANUARY 1, 2012.

3. THE LOCATIONS OF PUBLIC OR PRIVATE UTILITIES SHOWN ON THE PLANS ARE APPROXIMATE AND THE VILLAGE, DEPARTMENT, AND THE ENGINEERS DO NOT GUARANTEE THEIR ACCURACY. THE CONTRACTOR WILL BE REQUIRED TO ASCERTAIN THE EXACT LOCATION OF SUCH UTILITIES AND EXERCISE CARE DURING THE CONSTRUCTION OPERATION SO AS NOT TO DAMAGE THEM. IN ACCORDANCE WITH THE SPECIAL PROVISIONS AND ARTICLE 107.20 OF THE 'STANDARD SPECIFICATIONS' THE CONTRACTOR SHALL BE RESPONSIBLE FOR CONTACTING THE OWNERS OF ALL EXISTING UTILITIES SO THAT THEIR FACILITIES MAY BE LOCATED AND ADJUSTED OR MOVED, IF NECESSARY, PRIOR TO THE START OF CONSTRUCTION OPERATIONS.

4. THOSE EXISTING TRAFFIC SIGNS WHICH ARE SO DESIGNATED BY THE ENGINEER SHALL BE REMOVED, STORED AND SUBSEQUENTLY RELOCATED BY THE CONTRACTOR AT NO ADDITIONAL COST. ANY SIGNS WHICH ARE DAMAGED BY THE CONTRACTOR AS DETERMINED BY THE ENGINEER SHALL BE REPLACED IN KIND BY THE CONTRACTOR AND TO THE SATISFACTION OF THE ENGINEER AT NO ADDITIONAL COST.

5. ALL TRAFFIC CONTROL AND OTHER ADVISORY SIGNS NEEDED FOR CONSTRUCTION ARE TO BE FURNISHED BY THE CONTRACTOR IN ACCORDANCE WITH THE PLANS AND IDOT STANDARDS FOR TRAFFIC CONTROL AND PROTECTION.

6. SAW CUTTING OF PAVEMENTS, SIDEWALK, ETC. SHALL BE FULL DEPTH AND SHALL RESULT IN A CLEAN STRAIGHT EDGE ON THE PORTION REMAINING. ALL SAW CUTTING SHALL BE CONSIDERED INCLUDED IN THE COST OF THE ITEM REMOVED.

7. DEBRIS REMOVAL - MATERIALS RESULTING FROM THE VARIOUS CONSTRUCTION OPERATIONS SHALL BE REMOVED AT THE END OF EACH WORK DAY TO AN APPROVED SITE. IN THE JUDGEMENT OF THE ENGINEER, SHOULD IT BE NECESSARY TO REMOVE SUCH MATERIALS, THE ENGINEER WILL REMOVE MATERIALS AND THE CONTRACTOR SHALL BE BILLED ACCORDINGLY.

8. THE CONTRACTOR SHALL BE RESPONSIBLE FOR THE PROTECTION OF ALL UNDERGROUND OR SURFACE UTILITIES EVEN THOUGH THEY MAY NOT BE SHOWN ON THE PLANS. ANY UTILITY THAT IS DAMAGED DURING CONSTRUCTION SHALL BE REPAIRED OR REPLACED TO THE SATISFACTION OF THE ENGINEER. THE WORK SHALL BE AT THE CONTRACTOR'S EXPENSE.

9. WHENEVER, DURING CONSTRUCTION OPERATIONS, ANY LOOSE MATERIAL IS DEPOSITED IN THE FLOW LINE OF DRAINAGE STRUCTURES SUCH THAT THE NATURAL FLOW OF WATER IS OBSTRUCTED, IT SHALL BE REMOVED AT THE CLOSE OF EACH WORKING DAY. AT THE CONCLUSION OF CONSTRUCTION OPERATIONS, ALL UTILITY STRUCTURES SHALL BE FREE OF DIRT AND DEBRIS. THE WORK SPECIFIED ABOVE WILL NOT BE PAID FOR SEPARATELY BUT SHALL BE INCIDENTAL TO THE CONTRACT.

10. THE CONTRACTOR SHALL NOT OPEN OR SHUT ANY WATER VALVES OR FIRE HYDRANTS WITHOUT PRIOR AUTHORIZATION FROM THE VILLAGE WATER DEPARTMENT.

11. QUANTITIES FOR PATCHING SHALL NOT EXCEED THOSE PROVIDED IN THE SUMMARY OF QUANTITIES UNLESS APPROVED BY THE ENGINEER. THE ENGINEER WILL VERIFY FINAL PATCH LOCATIONS IN THE FIELD PRIOR TO REMOVAL.

12. HOT-MIX ASPHALT SURFACE REMOVAL BUTT JOINTS WILL BE INSTALLED AT THE ENDS OF ALL RESURFACING (WHERE RESURFACING MEETS EXISTING PAVEMENT). IN ACCORDANCE WITH THE BUTT JOINT AND HOT-MIX ASPHALT TAPER DETAILS SHEET INCLUDE DIN THE PLANS, UNLESS OTHERWISE SPECIFIED.

13. THE THICKNESS OF THE HOT-MIX ASPHALT MIXTURES SHOWN IN THE PLANS ARE NORMAL. DEVIATIONS MAY OCCUR DUE TO IRREGULARITIES IN THE SURFACES OR BASE ON WHICH THEY ARE PLACED. PLAN THICKNESS SHOULD BE CONSIDERED THE MINIMUM THICKNESS PERMITTED.

14. MAILBOXES WHICH ARE IN CONFLICT WITH PROPOSED IMPROVEMENTS SHALL BE REMOVED, TEMPORARILY RELOCATED, AND REPLACED UPON COMPLETION OF THE PROPOSED IMPROVEMENTS IN ACCORDANCE WITH ARTICLE 107.20 AND AS DIRECTED BY THE ENGINEER.

15. THE CONTRACTOR SHALL NOT PLACE SOD UNTIL THE TEMPERATURE IS 80 DEGREES OR LESS AND THE FORECAST FOR THE NEXT 7 DAYS SHOWS TEMPERATURES OF 80 DEGREES OR LESS. IF ALL OTHER PAY ITEMS ARE COMPLETED THE CONTRACTOR WILL NOT BE CHARGED WORKING DAYS FOR DELAYS IN PARKWAY RESTORATION DUE TO TEMPERATURE.

16. SPECIAL ATTENTION IS CALLED TO ARTICLE 107.30 OF THE STANDARD SPECIFICATIONS. THE CONTRACTOR SHALL BE RESPONSIBLE FOR THE DEFACEMENT OF ANY CONCRETE POURS BEFORE THEY HAVE SET UP. CONCRETE SIDEWALK, DRIVEWAY, CURB, AND CURB AND GUTTER THAT HAVE BEEN DEFACED, IN THE OPINION OF THE ENGINEER, SHALL BE REMOVED AND REPLACED BY THE CONTRACTOR AT HIS EXPENSE. THIS SHALL BE CONSIDERED INCIDENTAL TO THE CONTRACT.

17. FOR WORK OUTSIDE LIMITS OF BRIDGE APPROACH PAVEMENT, ALL REFERENCES IN THE HIGHWAY STANDARDS AND STANDARD SPECIFICATIONS FOR REINFORCEMENT, DOWEL BARS AND TIE BARS IN PAVEMENT, SHOULDERS, CURB, GUTTER, COMBINATION CURB AND GUTTER AND MEDIAN, AND CHAIR SUPPORTS FOR CRC PAVEMENT, SHALL BE EPOXY COATED, UNLESS NOTED ON THE PLAN.

## IDOT STANDARDS

000001-06	STANDARD SYMBOLS, ABBREVIATIONS, AND PATTERNS
280001-06	TEMPORARY EROSION CONTROL SYSTEM
442201-03	CLASS C & D PATCHES
424001-06	CURB RAMPS FOR SIDEWALKS
606001-04	CONCRETE CURB TYPE B & COMBINATION CONCRETE CURB AND GUTTER
701311-03	LANE CLOSURE, 2L, 2W MOVING OPERATIONS - DAY ONLY
701501-06	URBAN LANE CLOSURE, MULTILANE INTERSECTION
701801-05	LANE CLOSURE MULTILANE 1W OR 2W CROSSWALK OR SIDEWALK CLOSURE
701901-02	TRAFFIC CONTROL DEVICES
780001-03	TYPICAL PAVEMENT MARKINGS

BOXED ITEMS INDICATE WORK NOT PAID FOR SEPARATELY BUT INCLUDED IN ANOTHER PAY ITEM OR INCLUDED IN THE CONTRACT.

FILE NAME =	USER NAME -- USER	DESIGNED -- SAV	REVISED	STATE OF ILLINOIS DEPARTMENT OF TRANSPORTATION	CARPENTER STREET IMPROVEMENTS GENERAL NOTES	F. A. U. NO.	SECTION	COUNTY	TOTAL SHEETS	SHEET NO.	
FILE NAME =		DRAWN -- SAV	REVISED			2614	11-00102-00-RS	DU PAGE	12	2	
	PLOT SCALE --	CHECKED -- AJS	REVISED			CONTRACT NO. 63673					
	PLOT DATE -- 12/14/11	DATE -- 12/14/11	REVISED			NOT TO SCALE	SHEET NO. 2 OF 12 SHEETS	STA.	TO STA.	FED. ROAD DIST. NO. 1	ILLINOIS

# SUMMARY OF QUANTITIES

CARPENTER STREET				
CODE NO.	PAY ITEM	UNIT	TOTAL QUANTITY	CONSTRUCTION TYPE CODE 0005
20101200	TREE ROOT PRUNING	EACH	5	5
21101615	TOPSOIL FURNISH AND PLACE, 4"	SQ YD	110	110
25000400	NITROGEN FERTILIZER NUTRIENT	POUND	4	4
25000500	PHOSPHOROUS FERTILIZER NUTRIENT	POUND	4	4
25000600	POTASSIUM FERTILIZER NUTRIENT	POUND	4	4
25200110	SODDING, SALT TOLERANT	SQ YD	110	110
25200200	SUPPLEMENTAL WATERING	UNIT	5	5
28000510	INLET FILTERS	EACH	16	16
40201000	AGGREGATE FOR TEMPORARY ACCESS	TON	100	100
40600100	BITUMINOUS MATERIALS (PRIME COAT)	GALLON	460	460
40600300	AGGREGATE (PRIME COAT)	TON	9	9
40600827	POLYMERIZED LEVELING BINDER (MACHINE METHOD), IL-4.75, N50	TON	199	199
40600982	HOT-MIX ASPHALT SURFACE REMOVAL - BUTT JOINT	SQ YD	181	181
40603335	HOT-MIX ASPHALT SURFACE COURSE, MIX "D", N50	TON	398	398
42001300	PROTECTIVE COAT	SQ YD	320	320
42300200	PORTLAND CEMENT CONCRETE DRIVEWAY PAVEMENT, 6 INCH	SQ YD	55	55
42400200	PORTLAND CEMENT CONCRETE SIDEWALK 5 INCH	SQ FT	520	520

CARPENTER STREET				
CODE NO.	PAY ITEM	UNIT	TOTAL QUANTITY	CONSTRUCTION TYPE CODE 0005
42400800	DETECTABLE WARNINGS	SQ FT	88	88
44000157	HOT-MIX ASPHALT SURFACE REMOVAL, 2"	SQ YD	4,600	4,600
44000200	DRIVEWAY PAVEMENT REMOVAL	SQ YD	70	70
44000600	SIDEWALK REMOVAL	SQ FT	520	520
44000500	COMBINATION CONCRETE CURB AND GUTTER REMOVAL	FOOT	355	355
44201713	CLASS D PATCHES, TYPE I, 6 INCH	SQ YD	100	100
44201717	CLASS D PATCHES, TYPE II, 6 INCH	SQ YD	100	100
44201721	CLASS D PATCHES, TYPE III, 6 INCH	SQ YD	120	120
44201723	CLASS D PATCHES, TYPE IV, 6 INCH	SQ YD	150	150
60604400	COMBINATION CONCRETE CURB AND GUTTER, TYPE B-6.18	FOOT	355	355
67100100	MOBILIZATION	L SUM	1	1
70102620	TRAFFIC CONTROL AND PROTECTION, STANDARD 701501	L SUM	1	1
70102640	TRAFFIC CONTROL AND PROTECTION, STANDARD 701801	L SUM	1	1
* 78000650	THERMOPLASTIC PAVEMENT MARKING-LINE 24"	FOOT	25	25
Z0004510	HOT-MIX ASPHALT DRIVEWAY PAVEMENT, 3"	SQ YD	15	15
X6030310	FRAME AND LIDS TO BE ADJUSTED, SPECIAL	EACH	19	19
X2800510	INLET FILTER CLEANING	EACH	17	17

\* DENOTES SPECIALTY ITEM

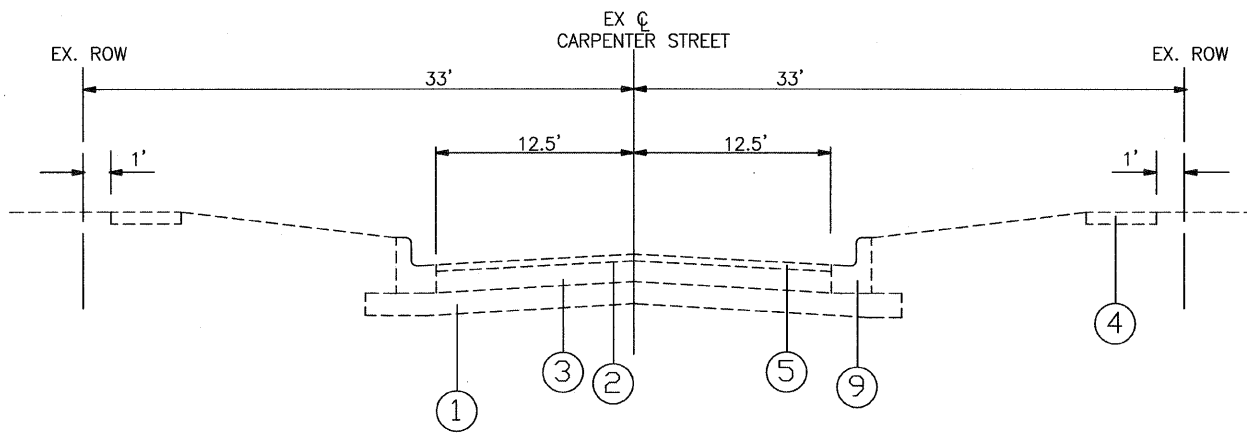
FILE NAME =	USER NAME - USER	DESIGNED - SAV	REVISED
FILE NAME =		DRAWN - SAV	REVISED
	PLOT SCALE -	CHECKED - AJS	REVISED
	PLOT DATE - 12/14/11	DATE - 12/14/11	REVISED

STATE OF ILLINOIS  
DEPARTMENT OF TRANSPORTATION

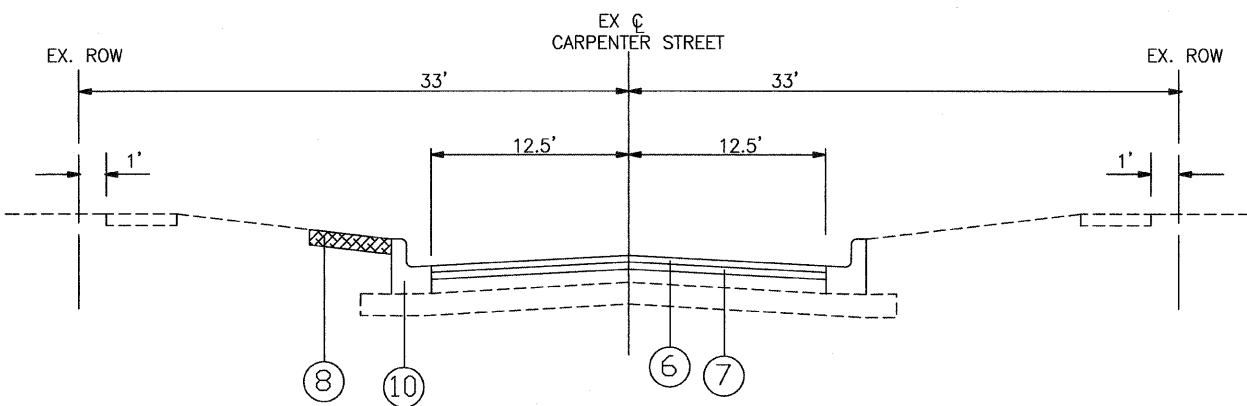
CARPENTER STREET IMPROVEMENTS  
SUMMARY OF QUANTITIES

NOT TO SCALE      SHEET NO. 3 OF 12 SHEETS      STA.      TO STA.

F. A. U. NO.	SECTION	COUNTY	TOTAL SHEETS	SHEET NO.
2614	11-00102-00-RS	DU PAGE	12	3
CONTRACT NO. 63673				
FED. ROAD DIST. NO. 1	ILLINOIS	FED. AID PROJECT		



EXISTING TYPICAL SECTION  
CARPENTER STREET



PROPOSED TYPICAL SECTION  
CARPENTER STREET

**LEGEND**

- ① EXISTING SUBGRADE
- ② EXISTING BITUMINOUS PAVEMENT, 2" - 3.5", VARIES
- ③ EXISTING CONCRETE, BRICK BASE, 5 1/2" - 7", VARIES
- ④ EXISTING PORTLAND CEMENT CONCRETE SIDEWALK
- ⑤ PROPOSED HMA SURFACE REMOVAL, 2"
- ⑥ PROPOSED HMA SURFACE COURSE, MIX "D", N50, 1 1/2"
- ⑦ PROPOSED POLYMERIZED LEVELING BINDER (MACHINE METHOD), IL-4.75, N50, 3/4"
- ⑧ PROPOSED SODDING, SALT TOLERANT & TOP SOIL FURNISH AND PLACE, 4"
- ⑨ EXISTING COMBINATION CONCRETE CURB & GUTTER, TYPE B6.18 REMOVAL WHERE SHOWN ON PLANS
- ⑩ PROPOSED COMBINATION CONCRETE CURB & GUTTER, TYPE B6.18 REPLACEMENT WHERE SHOWN ON PLANS

**HOT-MIX ASPHALT MIXTURE REQUIREMENTS**

MIXTURE TYPE	AIR VOIDS @ Ndes
HOT MIX ASPHALT SURFACE COURSE, MIX "D", N50 (IL 9.5 mm)	4% @ 50 GYR
POLYMERIZED LEVELING BINDER (MACHINE METHOD), IL-4.75, N50	3.5% @ 50 GYR
DRIVEWAY: HOT MIX ASPHALT SURFACE COURSE, MIX "D" N50 - 3"	4% @ 50 GYR
CLASS D PATCHES, (HMA BINDER) IL-19mm, N70, 6" (IN 2 LIFTS)	4% @ 70 GYR

-THE UNIT WEIGHT USED TO CALCULATE ALL HMA SURFACE MIXTURE QUANTITIES IS 112 LBS/SQYD/IN.

-THE "AC TYPE" FOR POLYMERIZED HMA MIXES SHALL BE "SBS/SBR PG 76 - 22" AND FOR NON-POLYMERIZED HMA THE "AC TYPE" SHALL BE "PG 64 - 22" UNLESS MODIFIED BY DISTRICT ONE SPECIAL PROVISIONS. FOR "PERCENT OF RAP" SEE DISTRICT ONE SPECIAL PROVISIONS.

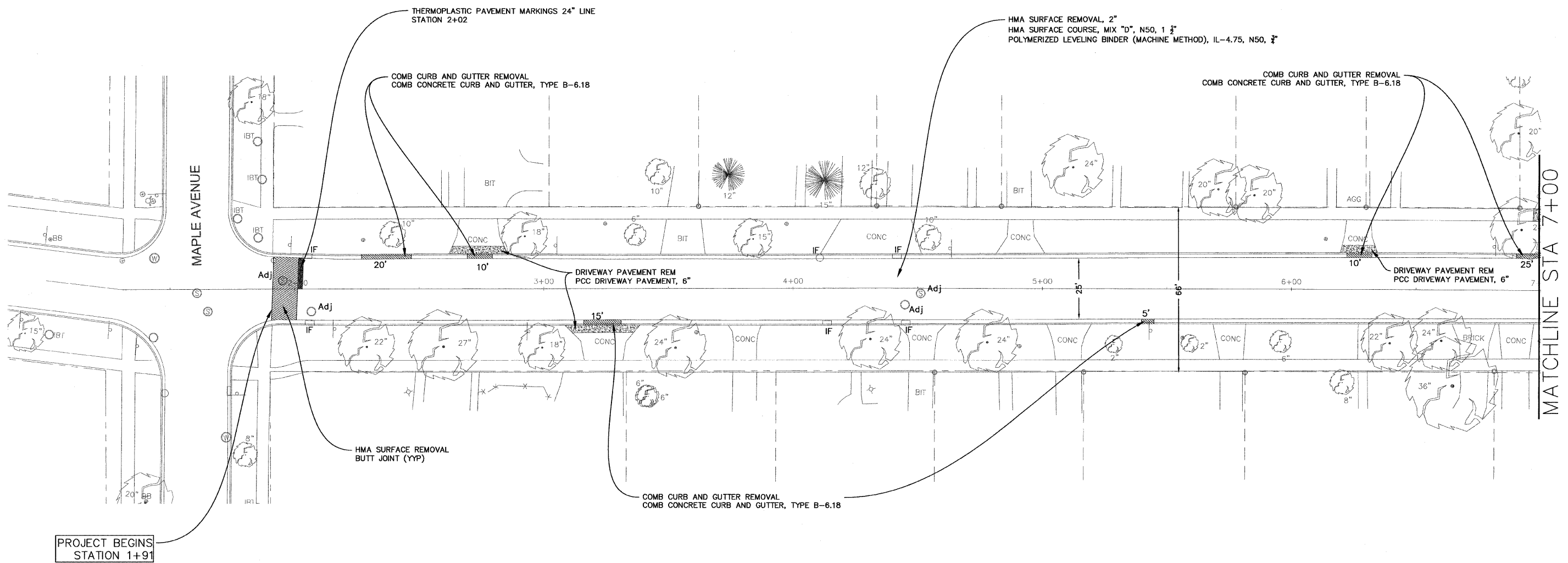
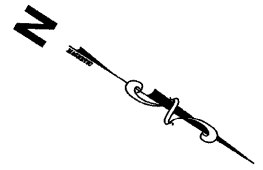
FILE NAME =	USER NAME - USER	DESIGNED - SAV	REVISED
FILE NAME =		DRAWN - SAV	REVISED
	PLOT SCALE -	CHECKED - AJS	REVISED
	PLOT DATE - 12/14/11	DATE - 12/14/11	REVISED

STATE OF ILLINOIS  
DEPARTMENT OF TRANSPORTATION

CARPENTER STREET IMPROVEMENTS  
TYPICAL SECTIONS

NOT TO SCALE SHEET NO. 4 OF 12 SHEETS STA. TO STA.

F. A. U. NO.	SECTION	COUNTY	TOTAL SHEETS	SHEET NO.
2614	11-00102-00-RS	DU PAGE	12	4
CONTRACT NO. 63673				
FED. ROAD DIST. NO. 1	ILLINOIS	FED. AID PROJECT		



**NOTES**

1. CLASS D PATCHES, 6" AS DIRECTED BY THE ENGINEER.
2. DETECTABLE WARNINGS SHALL BE ACCESS TILE CAST-IN-PLACE REPLACEABLE OR APPROVED EQUAL.
3. ALL EXISTING DRAINAGE STRUCTURES WHICH ARE TO BE ADJUSTED SHALL BE CLEANED IN ACCORDANCE WITH ARTICLE 602.15 OF THE STANDARD SPECIFICATIONS. THE COST OF THIS WORK SHALL BE INCLUDED IN THE ADJUSTMENT ITEM.
4. TOPSOIL, SODDING LOCATION/PLACEMENT AS DIRECTED BY THE ENGINEER.

Adj DRAINAGE & UTILITY STRUCTURES TO BE ADJUSTED  
 IF INLET FILTERS

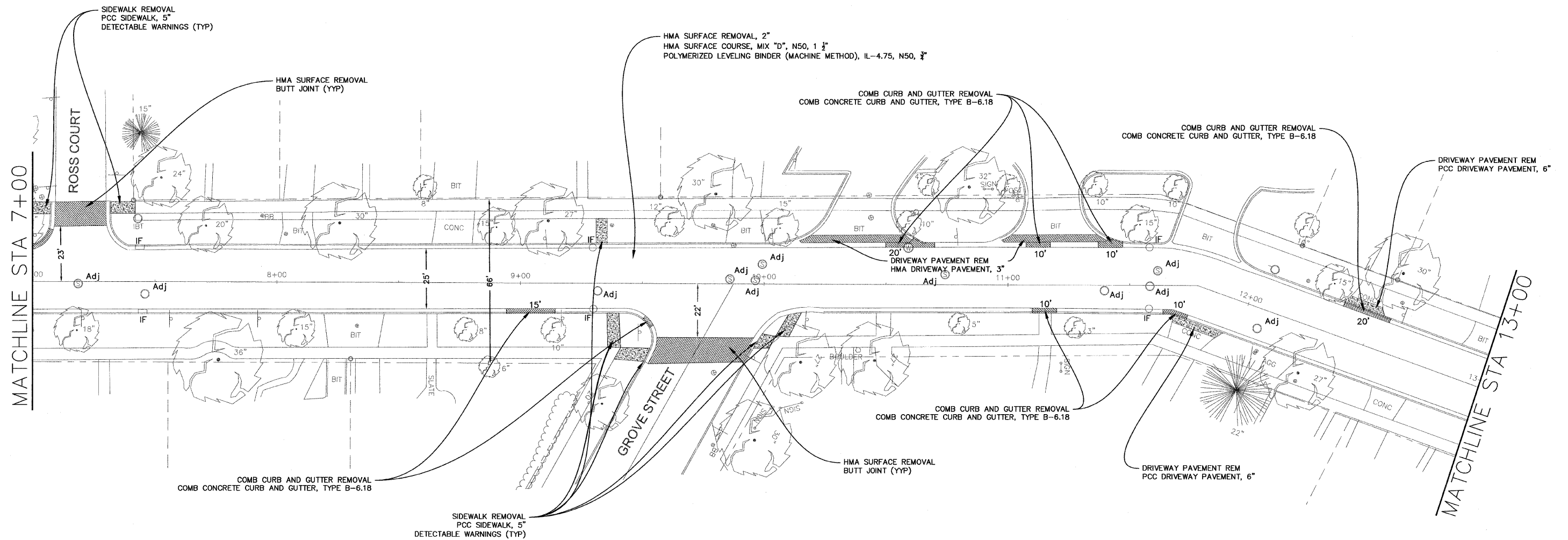
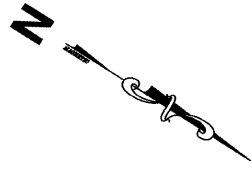
FILE NAME =	USER NAME -- USER	DESIGNED -- SAV	REVISED
FILE NAME =		DRAWN -- SAV	REVISED
	PLOT SCALE --	CHECKED -- AJS	REVISED
	PLOT DATE -- 12/14/11	DATE -- 12/14/11	REVISED

STATE OF ILLINOIS  
 DEPARTMENT OF TRANSPORTATION

CARPENTER STREET IMPROVEMENTS  
 IMPROVEMENT PLAN

NOT TO SCALE SHEET NO. 5 OF 12 SHEETS STA. 1+91 TO STA. 7+00

F.A.U. NO.	SECTION	COUNTY	TOTAL SHEETS	SHEET NO.
2614	11-00102-00-RS	DU PAGE	12	5
CONTRACT NO. 63673				
FED. ROAD DIST. NO. 1	ILLINOIS	FED. AID PROJECT		



**NOTES**

1. CLASS D PATCHES, 6" AS DIRECTED BY THE ENGINEER.
2. DETECTABLE WARNINGS SHALL BE ACCESS TILE CAST-IN-PLACE REPLACEABLE OR APPROVED EQUAL.
3. ALL EXISTING DRAINAGE STRUCTURES WHICH ARE TO BE ADJUSTED SHALL BE CLEANED IN ACCORDANCE WITH ARTICLE 602.15 OF THE STANDARD SPECIFICATIONS. THE COST OF THIS WORK SHALL BE INCLUDED IN THE ADJUSTMENT ITEM.
4. TOPSOIL, SODDING LOCATION/PLACEMENT AS DIRECTED BY THE ENGINEER.

Adj DRAINAGE & UTILITY STRUCTURES TO BE ADJUSTED  
 IF INLET FILTERS

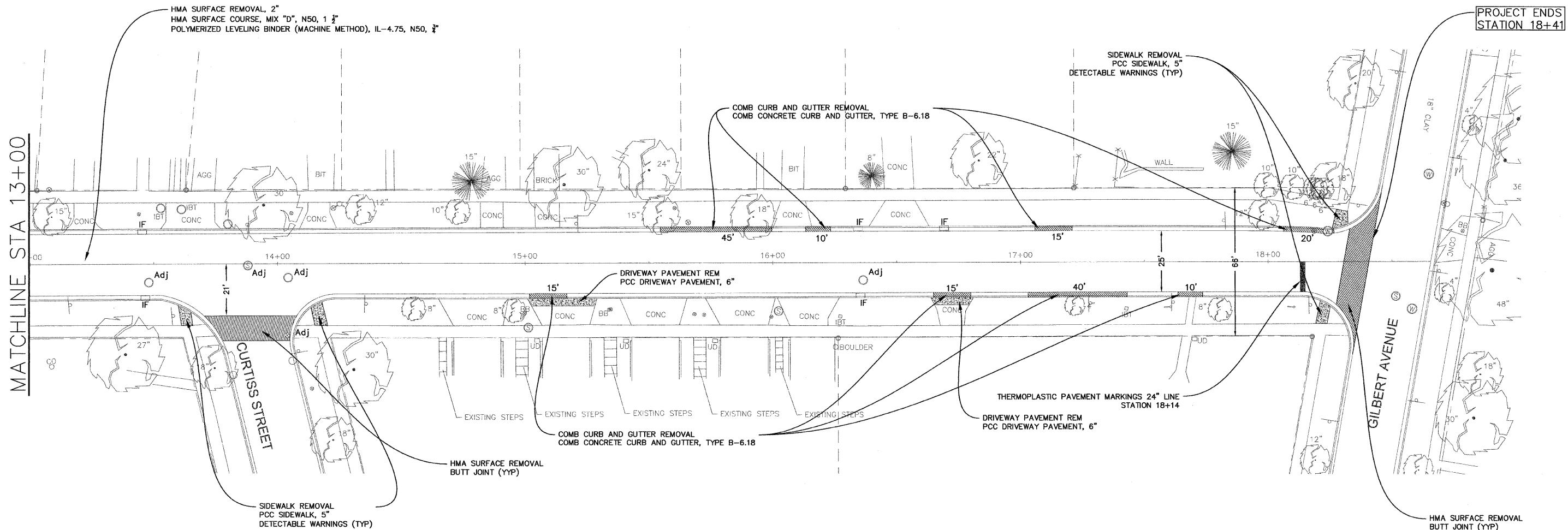
FILE NAME =	USER NAME - USER	DESIGNED - SAV	REVISED
FILE NAME =		DRAWN - SAV	REVISED
	PLOT SCALE -	CHECKED - AJS	REVISED
	PLOT DATE - 12/14/11	DATE - 12/14/11	REVISED

STATE OF ILLINOIS  
 DEPARTMENT OF TRANSPORTATION

CARPENTER STREET IMPROVEMENTS  
 IMPROVEMENT PLAN

NOT TO SCALE SHEET NO. 6 OF 12 SHEETS STA. 7+00 TO STA. 13+00

F. A. S. NO.	SECTION	COUNTY	TOTAL SHEETS	SHEET NO.
2614	11-00102-00-RS	DU PAGE	12	6
CONTRACT NO. 63673				
FED. ROAD DIST. NO. 1	ILLINOIS	FED. AID PROJECT		



**NOTES**

1. CLASS D PATCHES, 6" AS DIRECTED BY THE ENGINEER.
2. DETECTABLE WARNINGS SHALL BE ACCESS TILE CAST-IN-PLACE REPLACEABLE OR APPROVED EQUAL.
3. ALL EXISTING DRAINAGE STRUCTURES WHICH ARE TO BE ADJUSTED SHALL BE CLEANED IN ACCORDANCE WITH ARTICLE 602.15 OF THE STANDARD SPECIFICATIONS. THE COST OF THIS WORK SHALL BE INCLUDED IN THE ADJUSTMENT ITEM.
4. TOPSOIL, SODDING LOCATION/PLACEMENT AS DIRECTED BY THE ENGINEER.

[Adj] DRAINAGE & UTILITY STRUCTURES TO BE ADJUSTED  
 [IF] INLET FILTERS

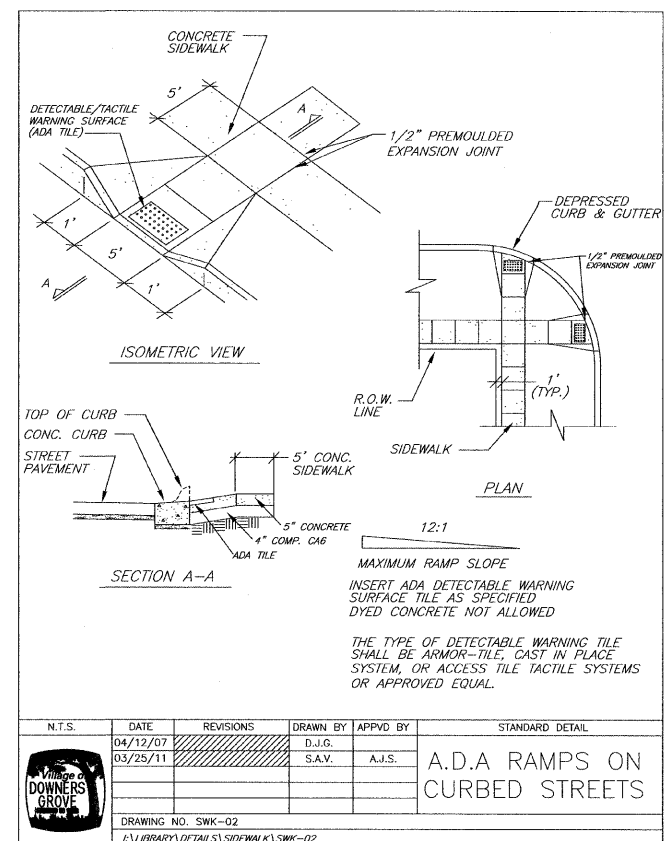
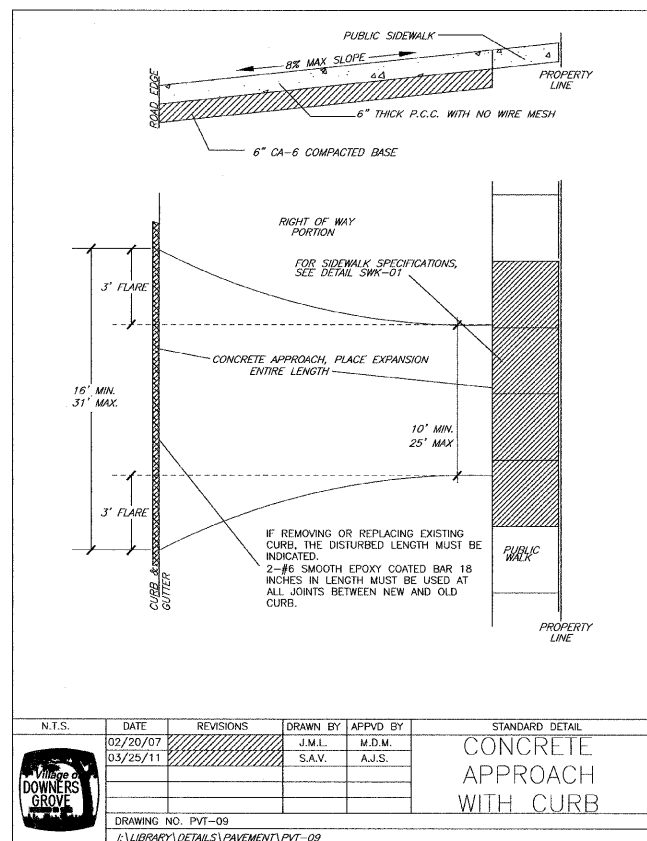
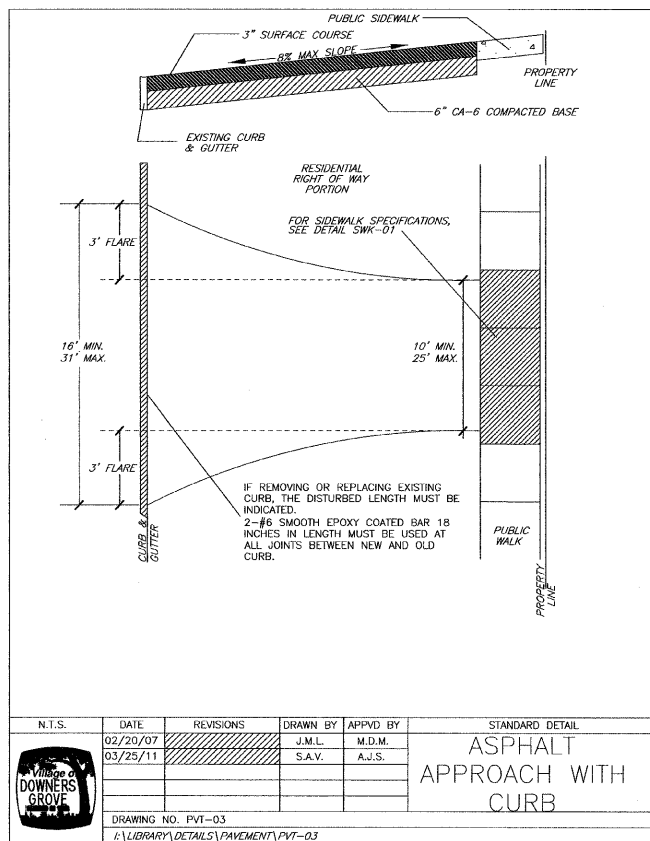
FILE NAME =	USER NAME - USER	DESIGNED - SAV	REVISED
FILE NAME =		DRAWN - SAV	REVISED
	PLOT SCALE -	CHECKED - AJS	REVISED
	PLOT DATE - 12/14/11	DATE - 12/14/11	REVISED

STATE OF ILLINOIS  
 DEPARTMENT OF TRANSPORTATION

CARPENTER STREET IMPROVEMENTS  
 IMPROVEMENT PLAN

NOT TO SCALE SHEET NO. 7 OF 12 SHEETS STA. 13+00 TO STA. 18+41

F. A. U. NO.	SECTION	COUNTY	TOTAL SHEETS	SHEET NO.
2614	11-00102-00-RS	DU PAGE	12	7
CONTRACT NO. 63673				
FED. ROAD DIST. NO. 1	ILLINOIS	FED. AID PROJECT		



FILE NAME =	USER NAME - USER	DESIGNED - SAV	REVISED
FILE NAME =		DRAWN - SAV	REVISED
	PLOT SCALE -	CHECKED - AJS	REVISED
	PLOT DATE - 12/14/11	DATE - 12/14/11	REVISED

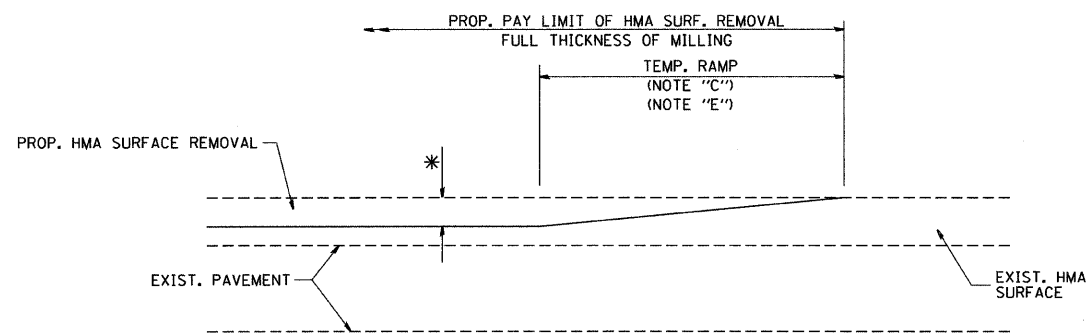
STATE OF ILLINOIS  
DEPARTMENT OF TRANSPORTATION

CARPENTER STREET IMPROVEMENTS  
VILLAGE DETAILS

NOT TO SCALE SHEET NO. 8 OF 12 SHEETS STA. TO STA.

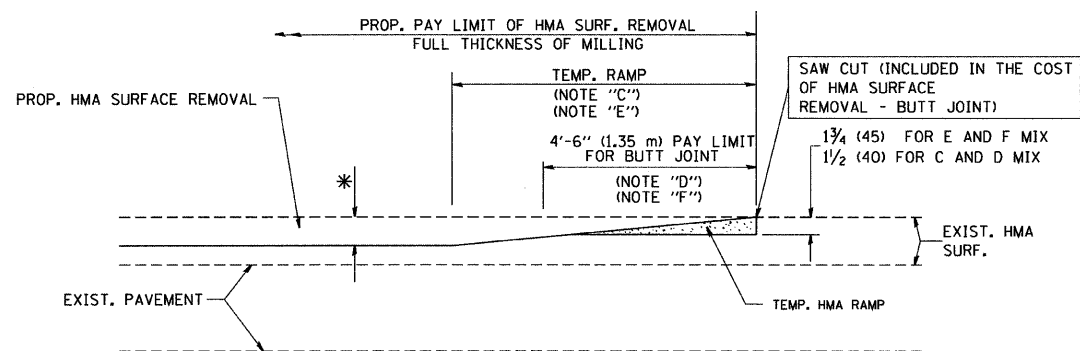
F. A. U. RITE.	SECTION	COUNTY	TOTAL SHEETS	SHEET NO.
2614	11-00102-00-RS	DU PAGE	12	8
CONTRACT NO. 63673				
FED. ROAD DIST. NO. 1	ILLINOIS	FED. AID PROJECT		





MILLED TEMPORARY RAMP  
(FOR BUTT JOINT AND HMA TAPER SEE DETAIL BELOW)

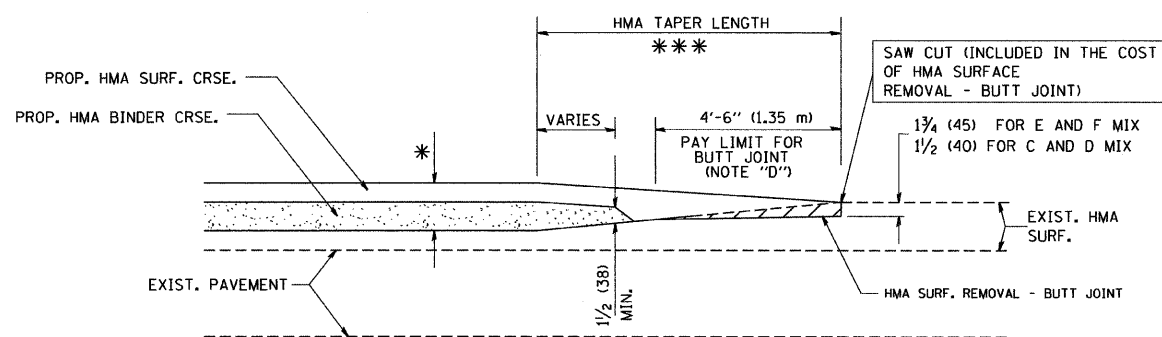
OPTION 1



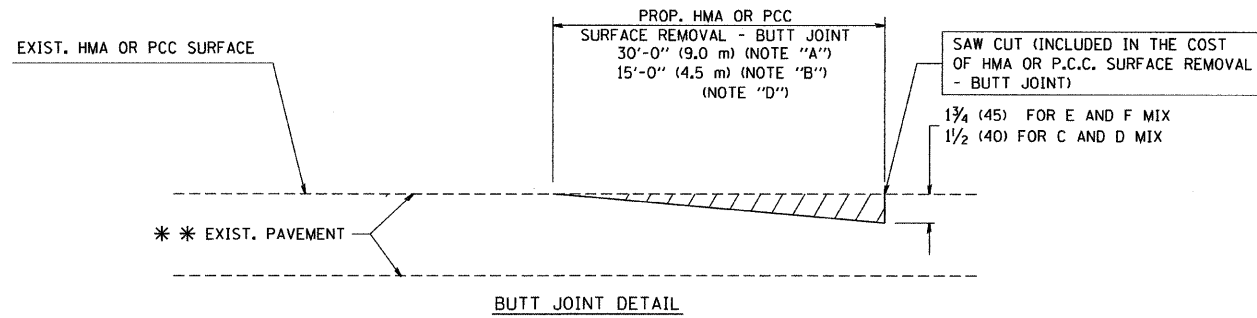
HMA CONSTRUCTED TEMPORARY RAMP  
(FOR BUTT JOINT AND HMA TAPER SEE DETAIL BELOW)

OPTION 2

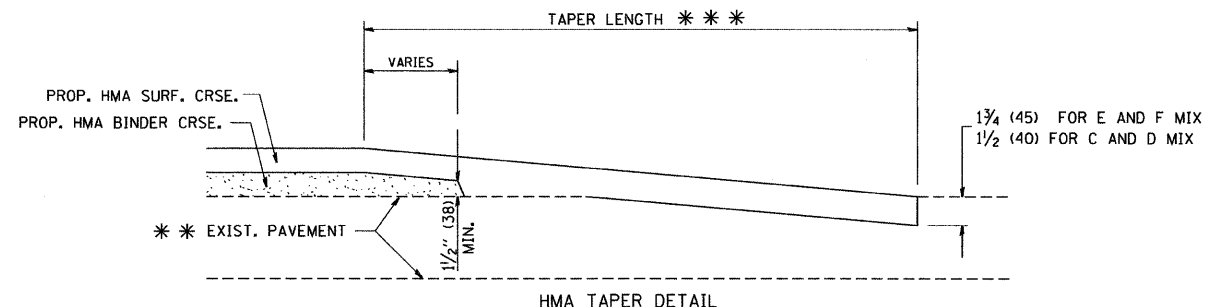
TYPICAL TEMPORARY RAMP



TYPICAL BUTT JOINT AND HMA TAPER  
FOR MILLING AND RESURFACING



BUTT JOINT DETAIL



HMA TAPER DETAIL

TYPICAL BUTT JOINT AND HMA TAPER  
FOR RESURFACING ONLY

\*\*\* PC CONCRETE, HMA OR HMA RESURFACED PAVEMENT.

NOTES

- A: MAINLINE ROADWAYS AND MAJOR SIDE ROADS.
  - B: MINOR SIDE ROADS.
  - C: THE TEMP. RAMP SHALL BE CONSTRUCTED IMMEDIATELY UPON REMOVAL OF THE EXISTING HMA SURFACE.
  - D: THE BUTT JOINT SHALL BE CONSTRUCTED IMMEDIATELY PRIOR TO PLACING THE PROPOSED HMA COURSES.
  - E: TAPER THE TEMP. RAMP AT A RATE OF 3'-0" (900 mm) PER 1 INCH (25 mm) OF MILLING THICKNESS.
  - F: INSTALLATION AND REMOVAL OF THE 4'-6" (1.35 m) TEMP. RAMP IS INCLUDED IN COST OF HMA SURFACE REMOVAL - BUTT JOINT
  - G: SEE ARTICLE 406.08 AND 406.14 OF THE STANDARD SPECIFICATIONS FOR "HMA AND/OR PCC SURFACE REMOVAL, BUTT JOINT".
- \* SEE TYPICAL SECTIONS FOR MILLING THICKNESS.
- \*\*\* 20'-0" (6.1 m) PER 1 (25) RESURFACING (NOTE "A")  
10'-0" (3.0 m) PER 1 (25) RESURFACING (NOTE "B")

BASIS OF PAYMENT:

THE BUTT JOINT WILL BE PAID FOR AT THE CONTRACT UNIT PRICE PER SQUARE YARD (SQUARE METER) FOR "HOT-MIX ASPHALT SURFACE REMOVAL - BUTT JOINT" OR FOR "PORTLAND CEMENT CONCRETE SURFACE REMOVAL - BUTT JOINT".

ALL DIMENSIONS ARE IN INCHES (MILLIMETERS) UNLESS OTHERWISE SHOWN.

FILE NAME =  
W:\dststd\22x34\bd32.dgn

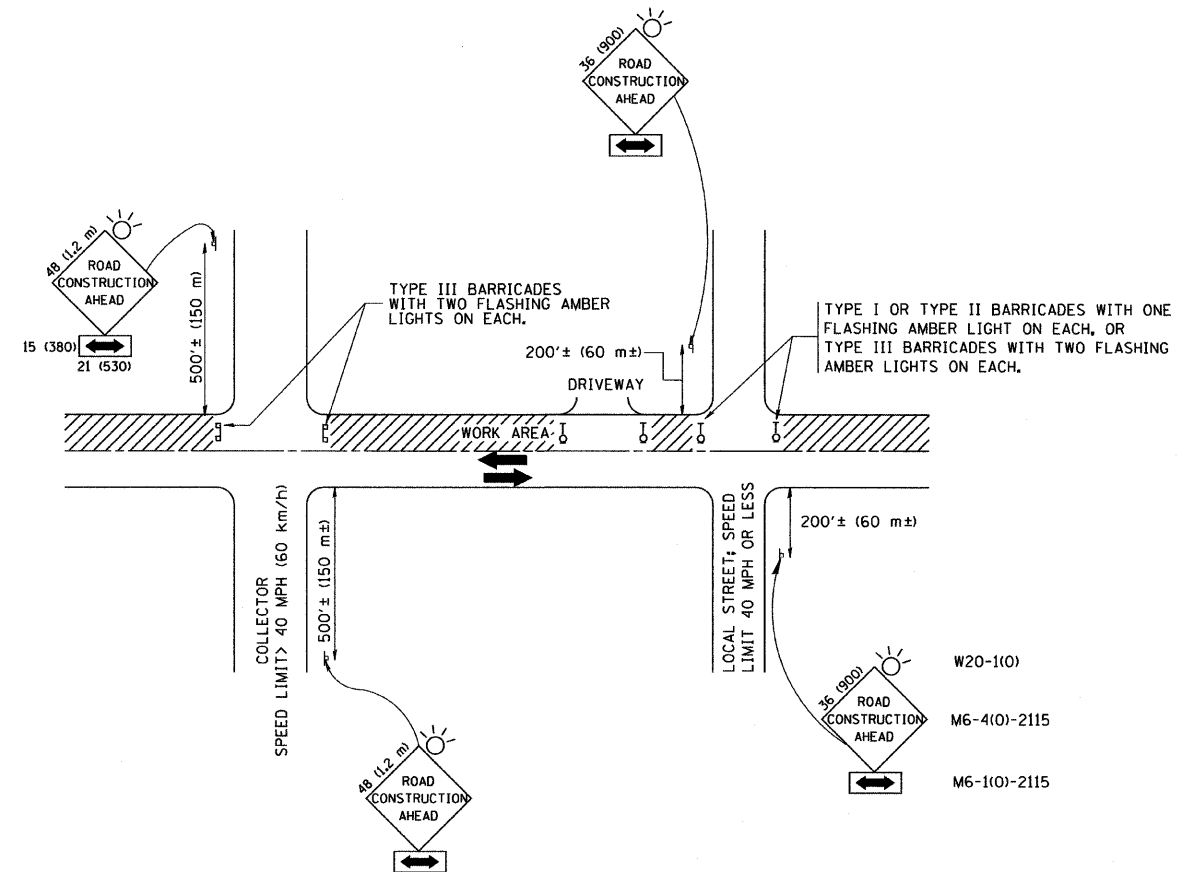
USER NAME = gaglienobt	DESIGNED - M. DE YONG	REVISED - R. SHAH 10-25-94
PLOT SCALE = 50.0000 "/ IN.	CHECKED -	REVISED - A. ABBAS 03-21-97
PLOT DATE = 1/4/2008	DATE - 06-13-90	REVISED - M. GOMEZ 04-06-01
		REVISED - R. BORO 01-01-07

STATE OF ILLINOIS  
DEPARTMENT OF TRANSPORTATION

BUTT JOINT AND  
HMA TAPER DETAILS

SCALE: NONE SHEET NO. 9 OF 12 SHEETS STA. TO STA.

F.A. RTE.	SECTION	COUNTY	TOTAL SHEETS	SHEET NO.
2614	11-00102-00-RS		12	9
BD400-05 BD32		CONTRACT NO.	63673	
FED. ROAD DIST. NO. 1 ILLINOIS FED. AID PROJECT				



TRAFFIC CONTROL AND PROTECTION FOR SIDE ROADS, INTERSECTIONS, AND DRIVEWAYS

NOTES:

A. FOR NO LANE RESTRICTION ON THE SIDE ROAD OR DRIVEWAYS

1. SIDE ROAD WITH A SPEED LIMIT OF 40 MPH (60 km/h) OR LESS AS SHOWN ON THE DRAWING AND AS DIRECTED BY THE ENGINEER:

a) ONE ROAD CONSTRUCTION AHEAD SIGN 36 x 36 (900x900) WITH A FLASHER AND FLAG MOUNTED ON IT APPROXIMATELY 200' (60 m) IN ADVANCE OF THE MAIN ROUTE.

b) THE CLOSED PORTION OF THE MAIN ROUTE SHALL BE PROTECTED BY BLOCKING WITH TYPE I, TYPE II OR TYPE III BARRICADES, 1/3 OF THE CROSS SECTION OF THE CLOSED PORTION.

2. SIDE ROAD WITH A SPEED LIMIT GREATER THAN 40 MPH (60 km/h) AS SHOWN ON THE DRAWING AND AS DIRECTED BY THE ENGINEER:

a) ONE ROAD CONSTRUCTION AHEAD SIGN 48 x 48 (1.2 m x 1.2 m) WITH A FLASHER MOUNTED ON IT APPROXIMATELY 500' (150 m) IN ADVANCE OF THE MAIN ROUTE.

b) THE CLOSED PORTION OF THE MAIN ROUTE SHALL BE PROTECTED BY BLOCKING WITH TYPE III BARRICADES, 1/2 OF THE CROSS SECTION OF THE CLOSED PORTION.

3. WHEN THE SIDE ROAD LIES BETWEEN THE BEGINNING OF THE MAINLINE SIGNING AND THE WORK ZONE, A SINGLE HEADED ARROW (M6-1) SHALL BE USED IN LIEU OF THE DOUBLE HEADED ARROW (M6-4).

B. FOR A LANE CLOSURE ON A SIDE ROAD OR DRIVEWAY:

USE APPLICABLE PORTIONS OF THE TYPICAL APPLICATION OF TRAFFIC CONTROL DEVICES (STD. 701501, STD. 701606 OR THE APPROPRIATE STANDARD). THE SPACING OF SIGNS AND BARRICADES SHALL BE ADJUSTED FOR FIELD CONDITIONS AS DIRECTED BY THE ENGINEER. THE DIRECTIONAL ARROW SHALL BE COVERED OR REMOVED WHEN NO LONGER CONSISTENT WITH THE SIDE ROAD LANE CLOSURE.

C. ADVANCE WARNING SIGNS ARE TO BE OMITTED ON DRIVEWAY UNLESS OTHERWISE NOTED.

D. THE TRAFFIC CONTROL AND PROTECTION FOR SIDE ROADS, INTERSECTIONS, AND DRIVEWAYS SHALL BE INCIDENTAL TO THE COST OF SPECIFIED TRAFFIC CONTROL STANDARDS OR ITEMS.

All dimensions are in millimeters (inches) unless otherwise shown.

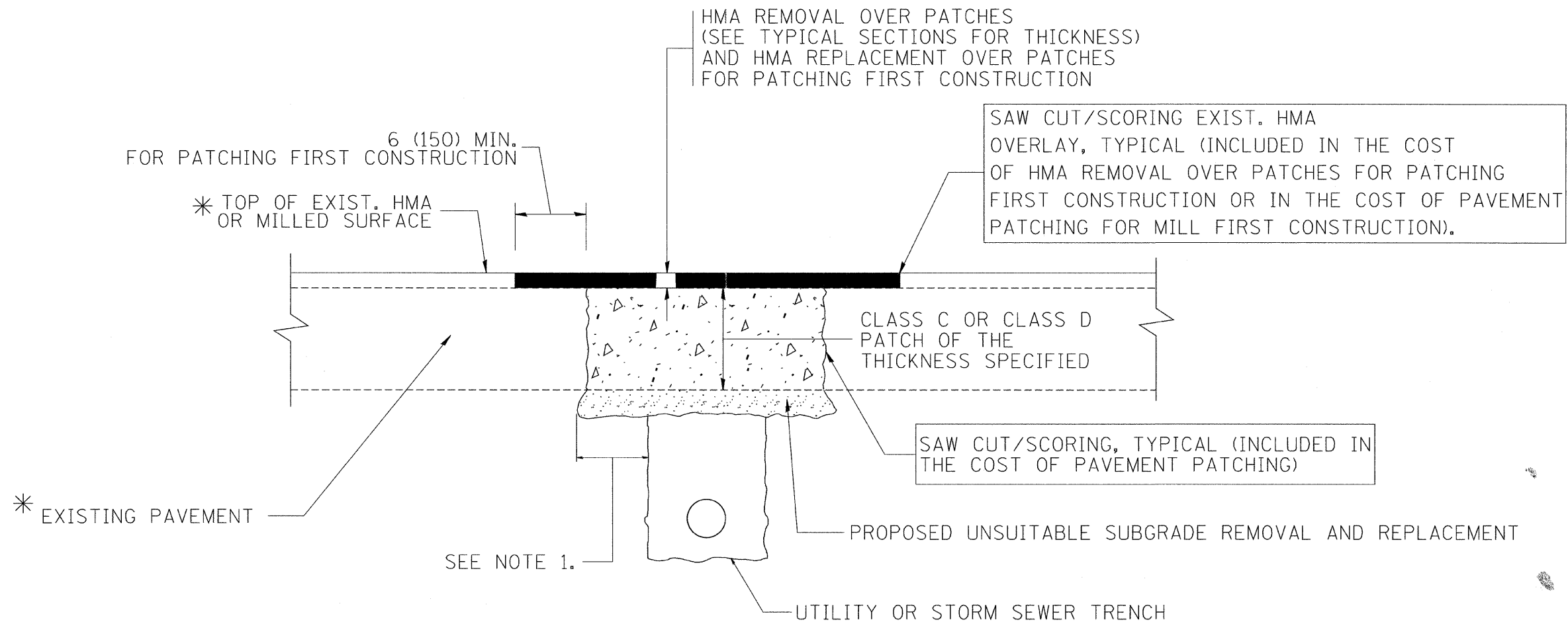
FILE NAME =	USER NAME = gaglianobt	DESIGNED - LHA	REVISED - J. OBERLE 10-18-95
W:\diststd\22x34\to18.dgn		DRAWN -	REVISED - A. HOUSEH 03-06-96
	PLOT SCALE = 58.000' / IN.	CHECKED -	REVISED - A. HOUSEH 10-15-96
	PLOT DATE = 1/4/2008	DATE - 06-89	REVISED - T. RAMMACHER 01-06-00

STATE OF ILLINOIS  
DEPARTMENT OF TRANSPORTATION

TRAFFIC CONTROL AND PROTECTION FOR SIDE ROADS, INTERSECTIONS, AND DRIVEWAYS	
SCALE: NONE	SHEET NO. 10 OF 12 SHEETS STA. TO STA.

F.A. RTE.	SECTION	COUNTY	TOTAL SHEETS	SHEET NO.
2614	11-00102-00-RS		12	10
TC-10		CONTRACT NO.	63673	
FED. ROAD DIST. NO. 1 ILLINOIS FED. AID PROJECT				





\* SEE TYPICAL SECTIONS FOR THICKNESS AND MATERIALS

**NOTES:**

1. THE WIDTH OF THE FULL DEPTH PATCH OVER A TRENCH SHALL BE 12 (300) WIDER ON EACH SIDE OF THE TRENCH.
2. FOR METHOD OF MEASUREMENT AND BASIS OF PAYMENT, SEE RECURRING SPECIAL PROVISION "PATCHING WITH HOT-MIX ASPHALT OVERLAY REMOVAL".

SEQUENCE OF CONSTRUCTION (PATCHING FIRST)

1. REMOVE THE EXISTING HMA MATERIAL OVER THE AREA TO BE PATCHED.
2. REMOVE AND REPLACE WITH CLASS C OR D PATCH.
3. REPLACE HMA MATERIAL OVER THE AREA TO BE PATCHED.

SEQUENCE OF CONSTRUCTION (MILLING FIRST)

1. MILL HMA FIRST IF THERE IS AT LEAST 4 1/2 INCHES OR MORE OF HMA MATERIAL ON TOP OF THE EXISTING PAVEMENT OR IF THE PAVEMENT IS FULL DEPTH HMA. A MINIMUM OF 2 INCHES OF HMA MATERIAL SHALL BE IN PLACE AFTER MILLING.
2. REMOVE AND REPLACE WITH FULL DEPTH CLASS D PATCHES TO TOP OF MILLED SURFACE.

ALL DIMENSIONS ARE IN INCHES (MILLIMETERS) UNLESS OTHERWISE SHOWN.

FILE NAME = c:\projects\distatd22\34\bd22.dgn	USER NAME = bouerd1	DESIGNED - R. SHAH	REVISED - A. ABBAS 04-27-98	<b>STATE OF ILLINOIS DEPARTMENT OF TRANSPORTATION</b>	<b>PAVEMENT PATCHING FOR HMA SURFACED PAVEMENT</b>	F.A. RTE.	SECTION	COUNTY	TOTAL SHEETS	SHEET NO.
		DRAWN -	REVISED - R. BORO 01-01-07			2614	11-00102-00-RS	DU PAGE	12	12
		PLOT SCALE = 50.000' / IN.	REVISED - R. BORO 09-04-07			<b>BD400-04 (BD-22)</b>		CONTRACT NO. 63673		
		PLOT DATE = 10/27/2008	REVISED - K. ENG 10-27-08			SCALE: NONE	SHEET NO. 12 OF 12 SHEETS	STA.	TO STA.	FED. ROAD DIST. NO. 1 [ILLINOIS] FED. AID PROJECT