

STATE OF ILLINOIS
DEPARTMENT OF TRANSPORTATION
DIVISION OF HIGHWAYS

PLANS FOR PROPOSED
FEDERAL AID HIGHWAY

FAU 1609 (167TH STREET)
FAU 2755 (80TH AVENUE) TO FAP 348 (HARLEM AVENUE)
ROADWAY RESURFACING
L.A. SECTION NO.: 11-00111-00-RS
PROJECT NO.: M-9003 (919)
VILLAGE of TINLEY PARK
COOK COUNTY
JOB NO. C-91-180-12

F. A. U. NO.	SECTION	COUNTY	TOTAL SHEETS	SHEET NO.
1609	11-00111-00-RS	COOK	16	1
STA. TO STA.				
FED. ROAD DIST. NO. 1 ILLINOIS FED. AID PROJECT M-9003 (919)				

CONTRACT #63680

INDEX OF SHEETS

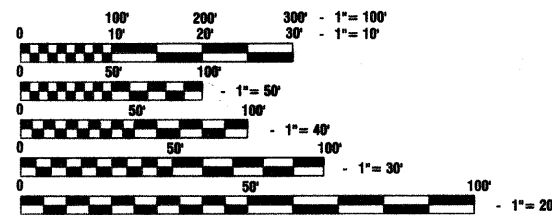
- COVER SHEET, INDEX OF SHEETS & STATE STANDARDS
- SUMMARY OF QUANTITIES & GENERAL NOTES
- TYPICAL CROSS SECTIONS
- 6. PAVEMENT PLAN
- 9. PAVEMENT MARKINGS
- 16. IDOT DISTRICT 1 STANDARD DETAILS

HIGHWAY STANDARDS

- | | |
|-----------|--|
| 000001-06 | STANDARD SYMBOLS, ABBREVIATIONS AND PATTERNS |
| 424001-06 | PERPENDICULAR CURB RAMPS FOR SIDEWALKS |
| 442201-03 | CLASS C AND D PATCHES |
| 606001-04 | CONCRETE CURB TYPE B AND COMBINATION CONCRETE CURB AND GUTTER |
| 701501-06 | URBAN LANE CLOSURE, 2L, 2W, UNDIVIDED |
| 701801-05 | LANE CLOSURE, MULTILANE 1W OR 2W CROSSWALK OR SIDEWALK CLOSURE |
| 701901-02 | TRAFFIC CONTROL DEVICES |
| 720001-01 | SIGN PANEL MOUNTING DETAILS |
| 720006-03 | SIGN PANEL ERECTION DETAILS |
| 720011-01 | METAL POST FOR SIGNS, MARKERS & DELINEATORS |
| 886001-01 | DETECTOR LOOP INSTALLATIONS |
| 886006-01 | TYPICAL LAYOUTS FOR DETECTOR LOOPS |

	167TH STREET
2010 ADT -	7,500
2040 ADT -	7,500
POSTED SPEED LIMIT -	25 mph
DESIGN PERIOD -	20 YEARS
DESIGN SPEED LIMIT -	30 mph
DESIGN DESIGNATION -	LOCAL COLLECTOR

SCALES
PLAN - 1"=50'
PROFILE HORIZ. - 1"=50'
PROFILE VERT. - 1"=5'
CROSS SECTIONS - 1"=10'

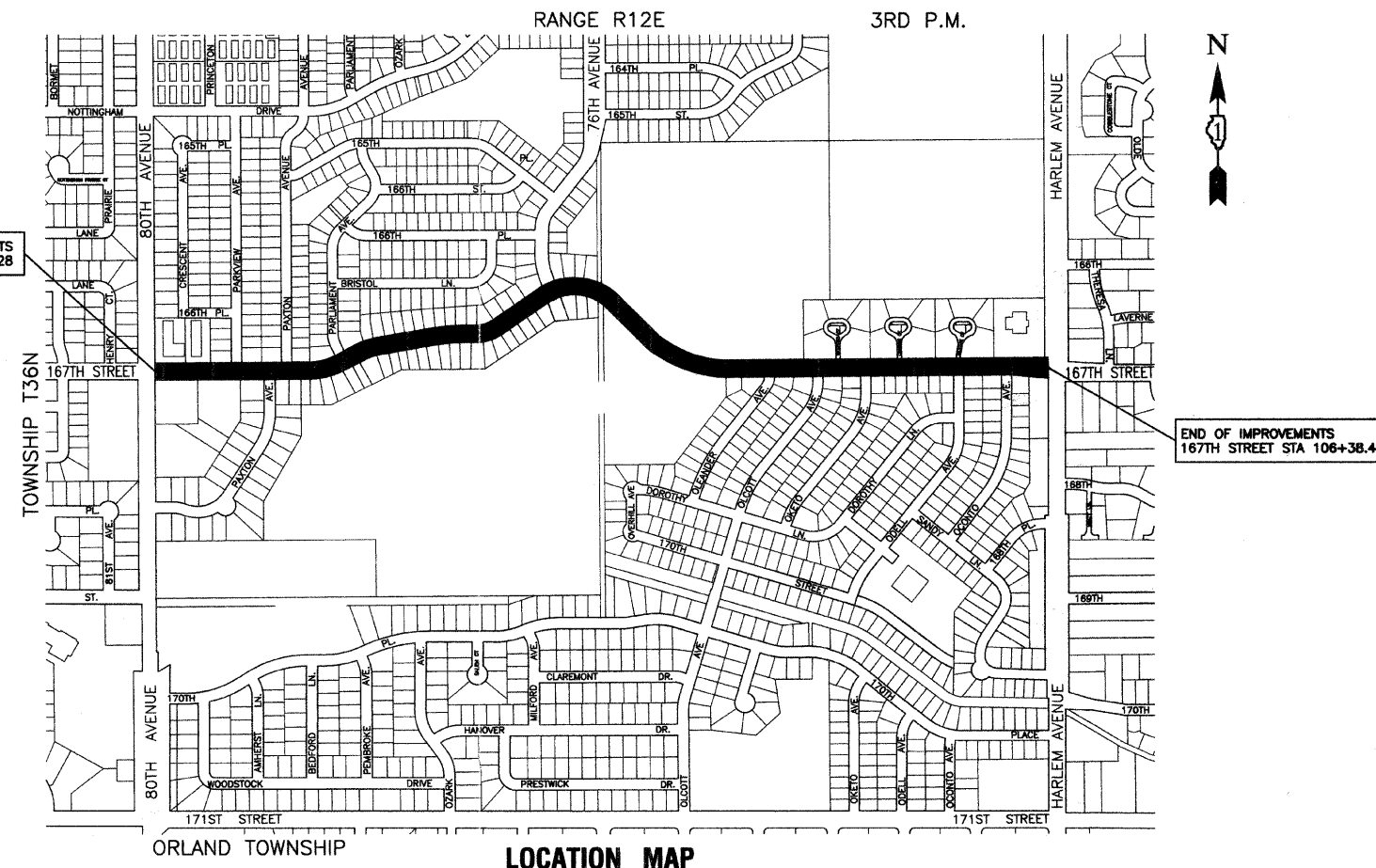


FULL SIZE PLANS HAVE BEEN PREPARED USING STANDARD ENGINEERING SCALES, REDUCED SIZED PLANS WILL NOT CONFORM TO STANDARD SCALES, IN MAKING MEASUREMENTS ON REDUCED PLANS, THE ABOVE SCALES MAY BE USED.

J. U. L. I. E.
JOINT UTILITY LOCATION INFORMATION FOR EXCAVATION
1-800-892-0123 or 811

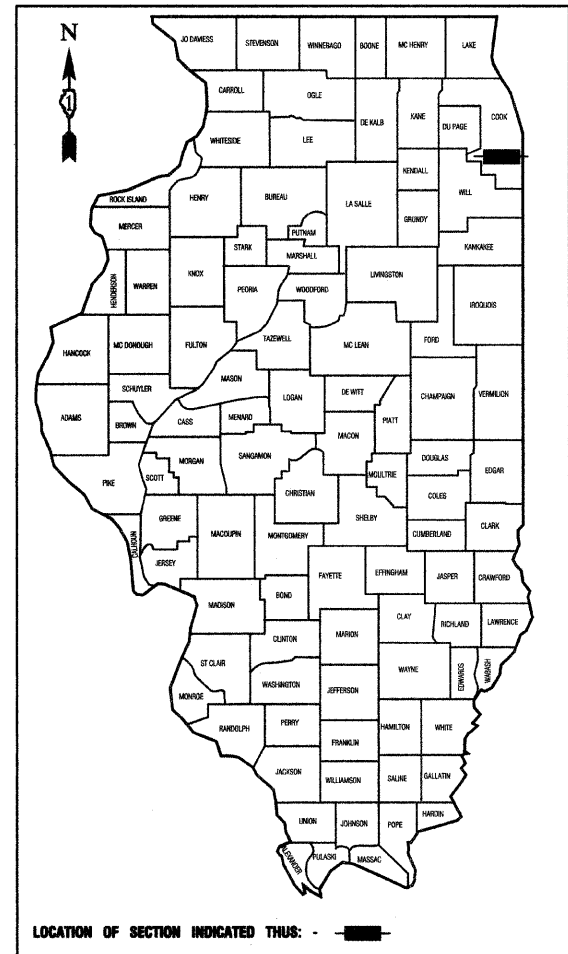
CONTRACT NO. 63680

PROGRAM AND OFFICE ENGINEER: CHARLES F. RIDDLE, PE (847)705-4406 SCHAUMBURG, IL
CONSULTANTS: ROBINSON ENGINEERING, LTD. 708-331-6700



LOCATION MAP

GROSS LENGTH=5,517 FEET=1.05 MILES
NET LENGTH=5,517 FEET=1.05 MILES



LOCATION OF SECTION INDICATED THIS: -

STATE OF ILLINOIS DEPARTMENT OF TRANSPORTATION
DIVISION OF HIGHWAYS

Approved: *[Signature]* 1-31-12
President, Village of Tinley Park

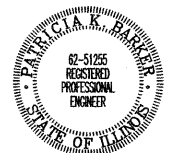
Passed: FEBRUARY 14, 2012
[Signature]
District 1 Engineer of Local Roads & Streets

Released for Bid Based on Limited Review: FEBRUARY 14, 2012
[Signature]
Deputy Director of Highways, Region 1 Engineer

PRINTED BY THE AUTHORITY OF
THE STATE OF ILLINOIS

PREPARED BY OR UNDER THE
DIRECT SUPERVISION OF:

[Signature]
1-31-12



LICENSE EXPIRES: 11/30/13