

FOR INDEX OF SHEETS, SEE SHEET NO. 2
 FOR STATE STANDARDS, SEE SHEET NO. 2

PROJECT LOCATED IN THE
 CITY OF ROSCOE

STATE OF ILLINOIS
 DEPARTMENT OF TRANSPORTATION
 DIVISION OF HIGHWAYS
**PROPOSED
 HIGHWAY PLANS**

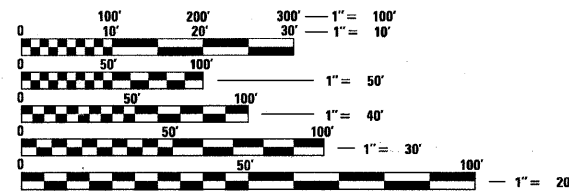
FAP 738 (IL. RTE. 251)
 S.N. 101-0033 & S.N. 101-0034 OVER DRY RUN CREEK
 BRIDGE REHABILITATION
 SECTION (5B)M
 WINNEBAGO COUNTY
 C-92-136-11

| F.A.P. RTE. | SECTION | COUNTY | TOTAL SHEETS | SHEET NO. |
|-------------|---------|-----------|--------------------|-----------|
| 738 | (5B)M | WINNEBAGO | 24 | 1 |
| | | ILLINOIS | CONTRACT NO. 64H21 | |

D-92-191-11



LOCATION OF SECTION INDICATED THUS: —

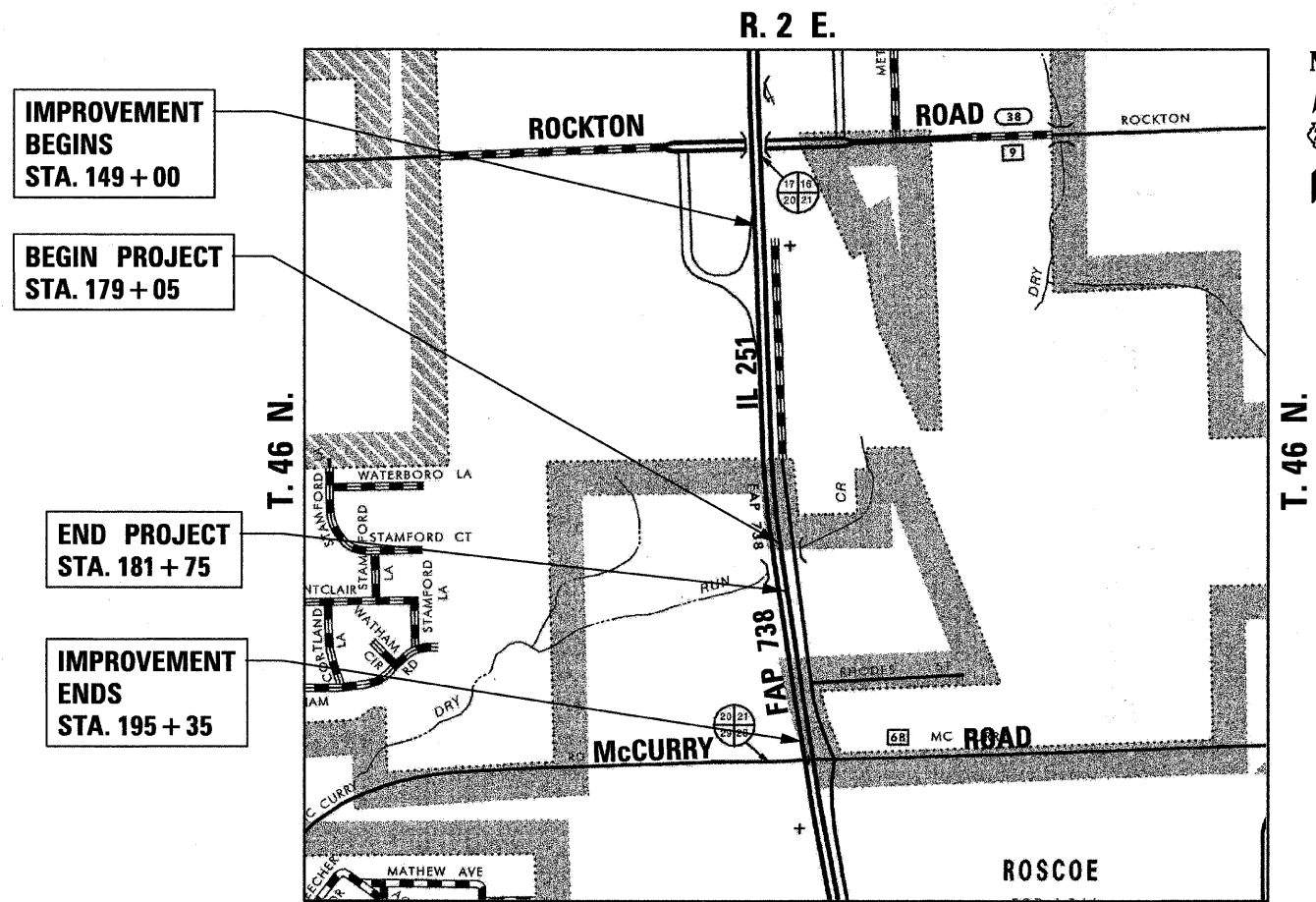


FULL SIZE PLANS HAVE BEEN PREPARED USING STANDARD ENGINEERING SCALES. REDUCED SIZED PLANS WILL NOT CONFORM TO STANDARD SCALES. IN MAKING MEASUREMENTS ON REDUCED PLANS, THE ABOVE SCALES MAY BE USED.

J.U.L.I.E.
 JOINT UTILITY LOCATING INFORMATION FOR EXCAVATORS
 1-800-892-0123
 OR 811

PROJECT MANAGER : MAHMOUD ETEMADI (815) 284-5393
 DESIGN PROJECT MANAGER : GEORGE LIPTACK (312) 372-2023

CONTRACT NO. 64H21



IMPROVEMENT BEGINS
 STA. 149 + 00

BEGIN PROJECT
 STA. 179 + 05

END PROJECT
 STA. 181 + 75

IMPROVEMENT ENDS
 STA. 195 + 35

ROSCOE TOWNSHIP, SECTION 21
 NOT TO SCALE

GROSS LENGTH OF PROJECT = 270 LIN. FT. = 0.051 MILES
 NET LENGTH OF PROJECT = 270 LIN. FT. = 0.051 MILES

CR & A
 CHRISTIAN-ROGE & ASSOCIATES, INC.
 ENGINEERS - PLANNERS - SURVEYORS
 211 W. WACKER DRIVE CHICAGO, IL 60606
 TELEPHONE: 312-372-2023

STATE OF ILLINOIS
 DEPARTMENT OF TRANSPORTATION
 DIVISION OF HIGHWAYS

SUBMITTED January 24 2012
Eric S. [Signature]
 DEPUTY DIRECTOR OF HIGHWAYS, REGION ENGINEER

March 23 2012
John D. Baranzelli, P.E. /a
 acting ENGINEER OF DESIGN AND ENVIRONMENT

March 23 2012
William B. Free /a
 acting DIRECTOR OF HIGHWAYS, CHIEF ENGINEER



Birinder S. Sachdeva 1-23-12
 BIRINDER S. SACHDEVA, P.E. DATE
 EXPIRES: 11-30-2013
 DRAWING NO.: 1-12, 19-24

**PRINTED BY THE AUTHORITY
 OF THE STATE OF ILLINOIS**