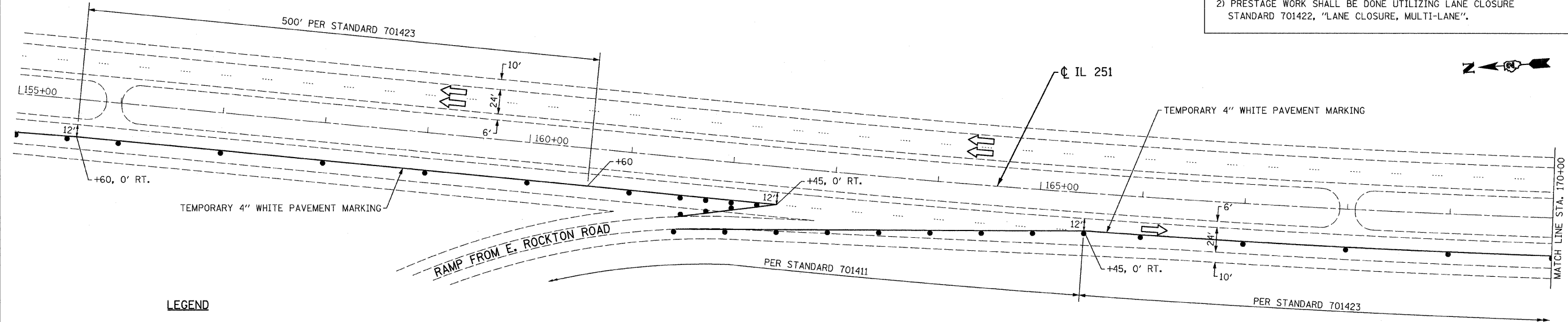
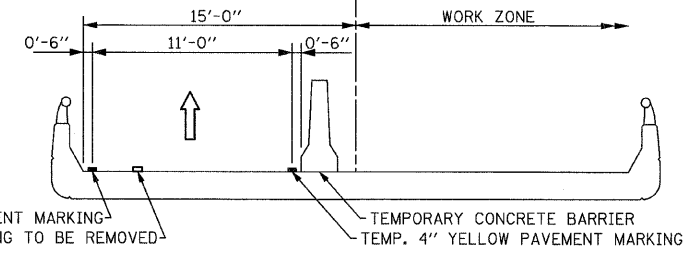
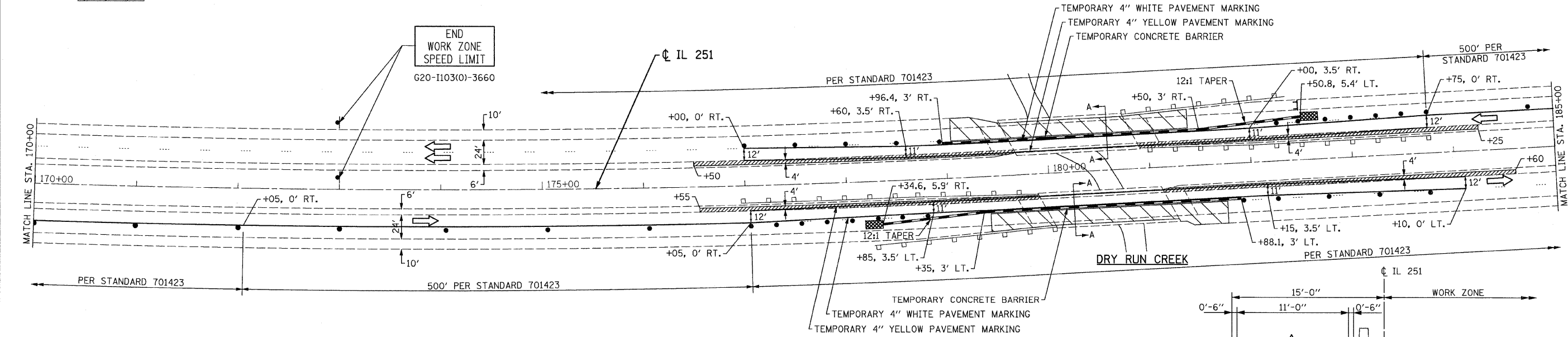


NOTES:

- 1) PRESTAGE MEDIAN SHOULDER REPAIR WORK SHALL CONSIST OF HMA SURFACE REMOVAL 2" AND PLACEMENT OF SURFACE COURSE MIX "C", N50, 2".
- 2) PRESTAGE WORK SHALL BE DONE UTILIZING LANE CLOSURE STANDARD 701422, "LANE CLOSURE, MULTI-LANE".



- LEGEND**
- PROPOSED HMA SURFACE REMOVAL, 2" HMA SURFACE COURSE, MIX 'C', N50, 2"
 - TEMPORARY CONCRETE BARRIER
 - IMPACT ATTENUATOR, TEMPORARY (NON-REDIRECTIVE), TEST LEVEL 3
 - TRAFFIC FLOW ARROW
 - WORK ZONE



DATE	
BY	
NO.	
FINAL SURVEY	
NOTED	
PLOTTED	
TEMPLATE	
AREAS CHECKED	

DATE	
BY	
NO.	
ORIGINAL SURVEY	
NOTED	
PLOTTED	
TEMPLATE	
AREAS CHECKED	

FILE NAME = D264H21-sht-Stage1-02.dgn
 PLOT DATE = 1/24/2012
 PLOT SCALE = 50.0000' / IN.

CHRISTIAN-ROGE & ASSOCIATES, INC.
 ENGINEERS-PLANNERS-SURVEYORS
 211 WEST WACKER DRIVE
 CHICAGO, ILLINOIS 60606
 PHONE: (312)372-2023 FAX: (312)372-5274

DESIGNED - E.M.	REVISED -
DRAWN - B.K.	REVISED -
CHECKED - M.P.	REVISED -
DATE - DECEMBER 2011	REVISED -

STATE OF ILLINOIS
DEPARTMENT OF TRANSPORTATION

TRAFFIC CONTROL AND PROTECTION PLAN
IL 251 AT DRY RUN CREEK BRIDGE
STAGE I

SCALE: SHEET NO. OF SHEETS STA. TO STA.

F.A.P. RTE. 738	SECTION (5B)M	COUNTY WINNEBAGO	TOTAL SHEETS 24	SHEET NO. 6
ILLINOIS			CONTRACT NO. 64H21	

SECTION A-A MOT 02