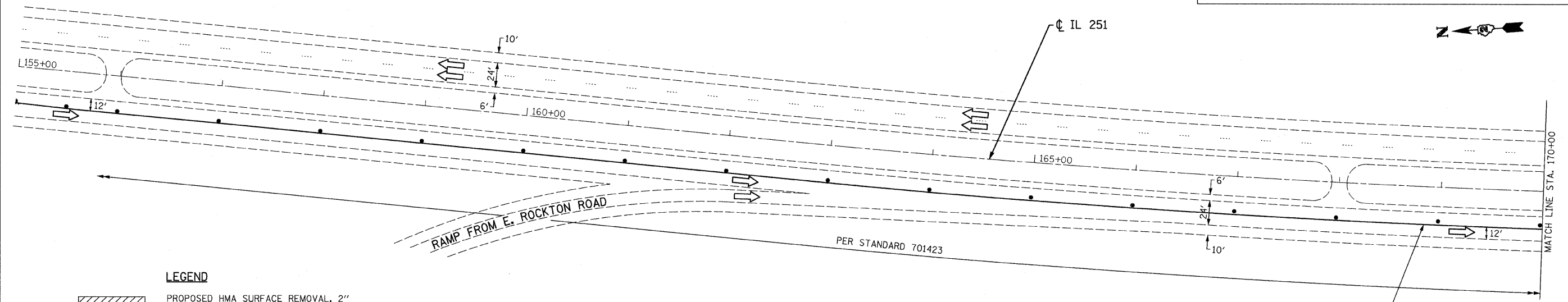
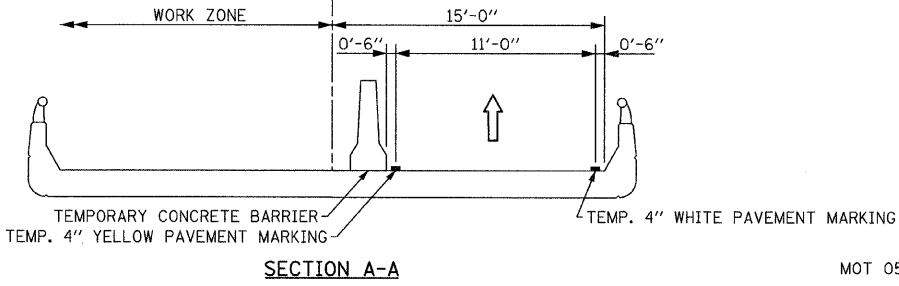
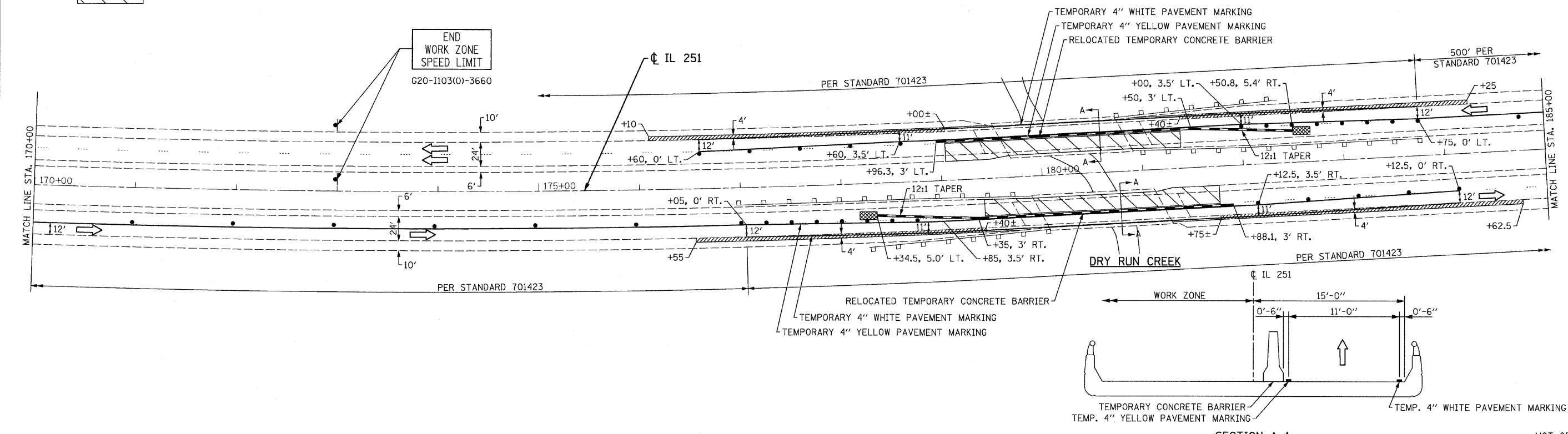


NOTES:

- 1) OUTSIDE SHOULDER REPAIR WORK SHALL CONSIST OF HMA SURFACE REMOVAL 2" AND PLACEMENT OF SURFACE COURSE MIX "C", N50, 2".
- 2) OUTSIDE SHOULDER WORK SHALL BE DONE DURING STAGE I AND UTILIZING LANE CLOSURE STANDARD 701422, "LANE CLOSURE, MULTI-LANE".



- LEGEND**
- PROPOSED HMA SURFACE REMOVAL, 2"
HMA SURFACE COURSE, MIX "C", N50, 2"
 - TEMPORARY CONCRETE BARRIER
 - IMPACT ATTENUATOR, TEMPORARY
(NON-REDIRECTIVE), TEST LEVEL 3
 - TRAFFIC FLOW ARROW
 - WORK ZONE



DATE	
BY	
FINAL SURVEY	
NOTED	
PLOTTED	
TEMPLATE	
NO. BOOK	
AREAS CHECKED	
NO.	

DATE	
BY	
ORIGINAL SURVEY	
NOTED	
PLOTTED	
TEMPLATE	
NO. BOOK	
AREAS CHECKED	
NO.	

FILE NAME = D264H21-sh1-Stage2-02.dgn
 PLOT DATE = 1/24/2012
 PLOT SCALE = 50.0000' / 1"

CHRISTIAN-ROGE & ASSOCIATES, INC.
 ENGINEERS-PLANNERS-SURVEYORS
 211 WEST WACKER DRIVE
 CHICAGO, ILLINOIS 60606
 PHONE: (312)372-2023 FAX: (312)372-5274

DESIGNED	-	E.M.	REVISED	-
DRAWN	-	B.K.	REVISED	-
CHECKED	-	M.P.	REVISED	-
DATE	-	DECEMBER 2011	REVISED	-

STATE OF ILLINOIS
DEPARTMENT OF TRANSPORTATION

TRAFFIC CONTROL AND PROTECTION PLAN
IL 251 AT DRY RUN CREEK BRIDGE
STAGE II

F.A.P. RTE.	SECTION	COUNTY	TOTAL SHEETS	SHEET NO.
738	(5)BM	WINNEBAGO	24	9
			CONTRACT NO. 64H21	
ILLINOIS				

SCALE: SHEET NO. OF SHEETS STA. TO STA.

MOT 05