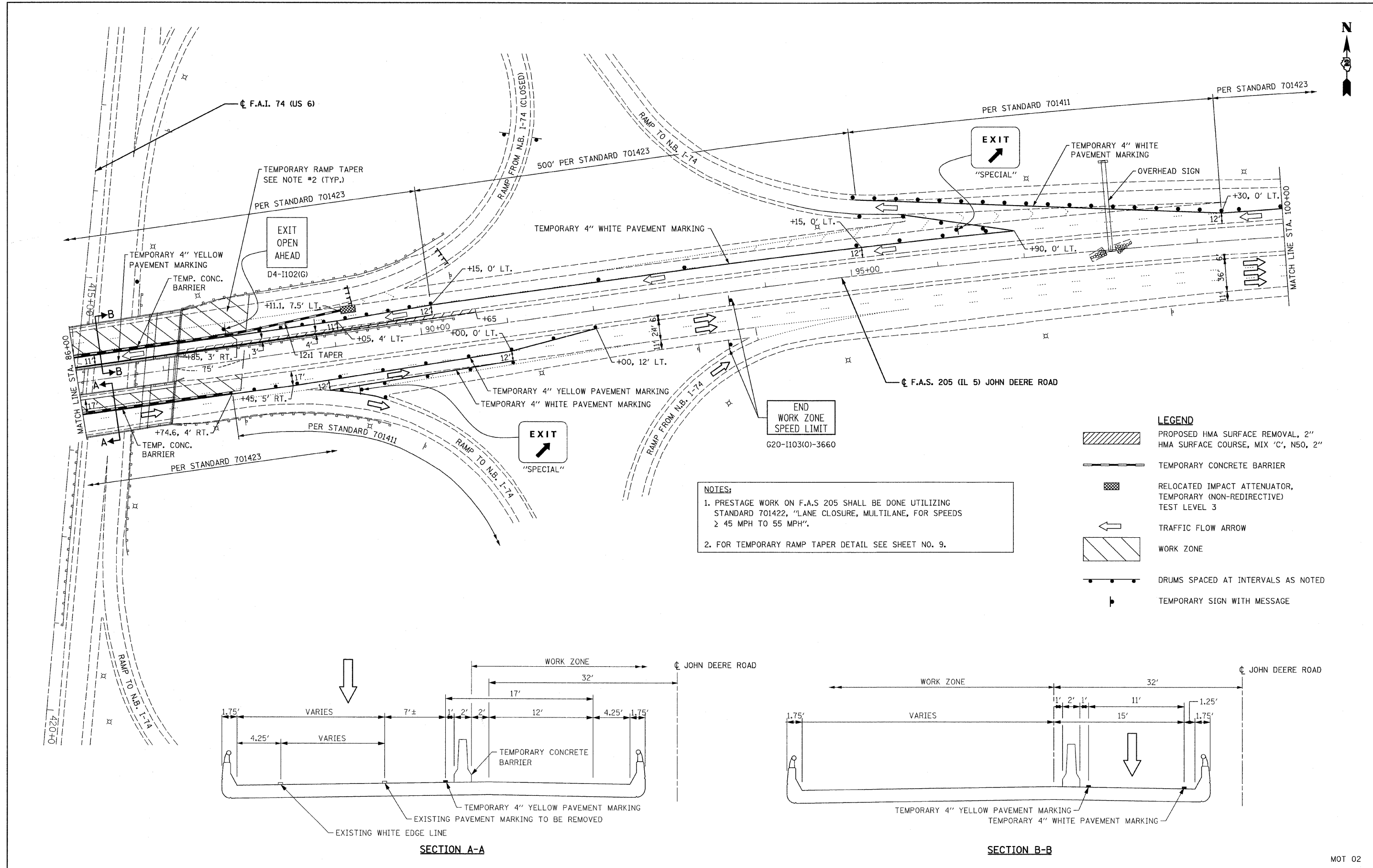




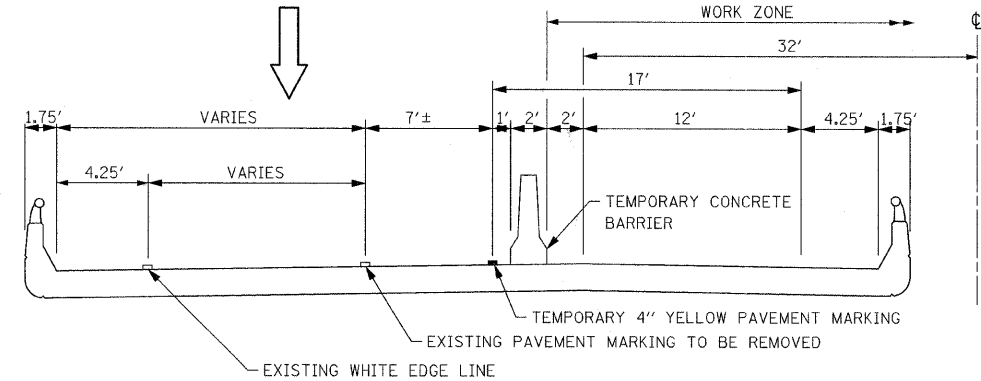
DATE	
BY	
FINAL SURVEY	
SURVEYED	
PLOTTED	
TEMPLATE	
NOTE BOOK	
AREAS CHECKED	
NO.	

DATE	
BY	
ORIGINAL SURVEY	
SURVEYED	
PLOTTED	
TEMPLATE	
NOTE BOOK	
AREAS CHECKED	
NO.	

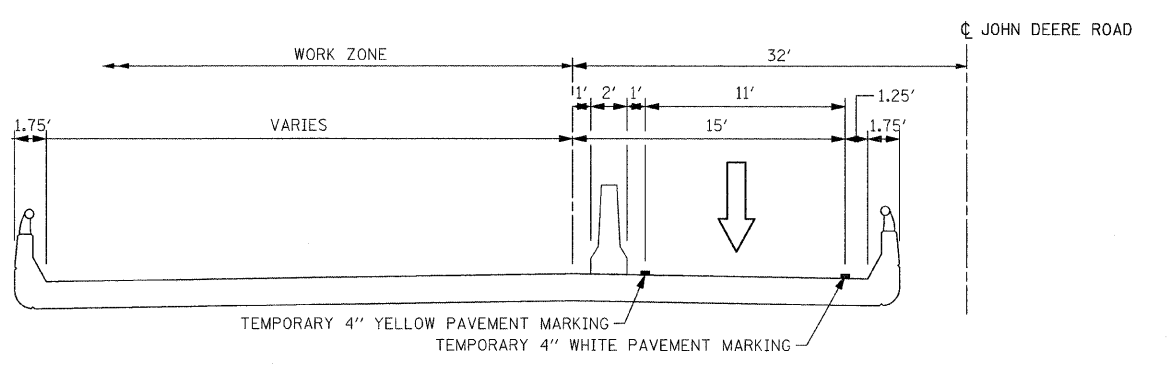


NOTES:
 1. PRESTAGE WORK ON F.A.S 205 SHALL BE DONE UTILIZING STANDARD 701422, 'LANE CLOSURE, MULTILANE, FOR SPEEDS ≥ 45 MPH TO 55 MPH'.
 2. FOR TEMPORARY RAMP TAPER DETAIL SEE SHEET NO. 9.

- LEGEND**
- PROPOSED HMA SURFACE REMOVAL, 2" HMA SURFACE COURSE, MIX 'C', N50, 2"
 - TEMPORARY CONCRETE BARRIER
 - RELOCATED IMPACT ATTENUATOR, TEMPORARY (NON-REDIRECTIVE) TEST LEVEL 3
 - TRAFFIC FLOW ARROW
 - WORK ZONE
 - DRUMS SPACED AT INTERVALS AS NOTED
 - TEMPORARY SIGN WITH MESSAGE



SECTION A-A



SECTION B-B

FILE NAME =D264H71-ah1-stagel.dgn
 PLOT DATE =1/24/2012
 PLOT SCALE=50.0000' / IN.

CHRISTIAN-ROGE & ASSOCIATES, INC.
 ENGINEERS-PLANNERS-SURVEYORS
 211 WEST WACKER DRIVE
 CHICAGO, ILLINOIS 60606
 PHONE: (312)372-2823 FAX: (312)372-5274

DESIGNED -	E.M.	REVISED -	
DRAWN -	B.K.	REVISED -	
CHECKED -	G.F.L.	REVISED -	
DATE -	JANUARY 2012	REVISED -	

STATE OF ILLINOIS
DEPARTMENT OF TRANSPORTATION

TRAFFIC CONTROL AND PROTECTION PLAN
IL ROUTE 5 AT I-74
STAGE I
 SCALE: 1" = 50' SHEET NO. OF SHEETS STA. TO STA.

F.A.S. RTE.	SECTION	COUNTY	TOTAL SHEETS	SHEET NO.
205	(81-2HB-1)M	ROCK ISLAND	29	8
				CONTRACT NO. 64H71
ILLINOIS				

MOT 02