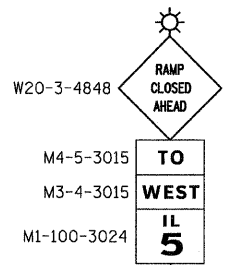
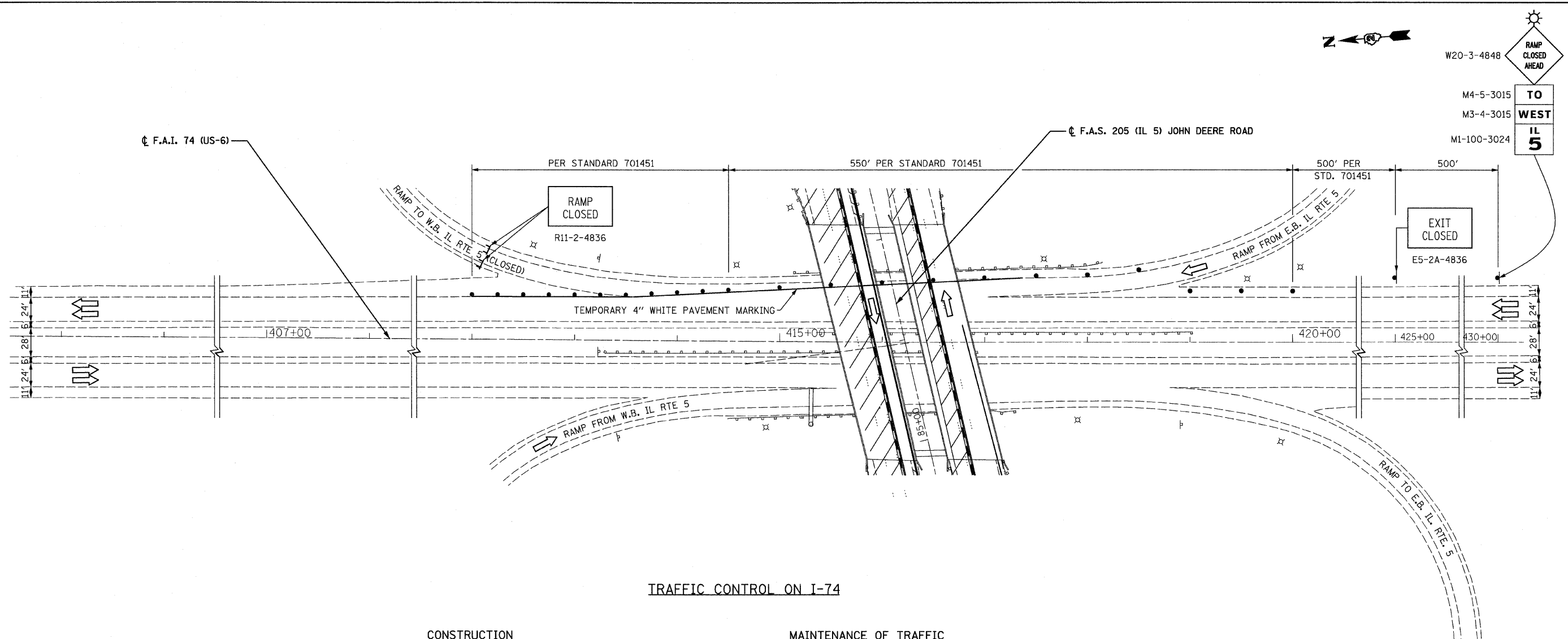


DATE	
BY	
FINAL SURVEY	
SURVEYED	
PLOTTED	
TEMPLATE	
NOTE BOOK	
AREAS CHECKED	
NO.	

DATE	
BY	
ORIGINAL SURVEY	
SURVEYED	
PLOTTED	
TEMPLATE	
NOTE BOOK	
AREAS CHECKED	
NO.	



TRAFFIC CONTROL ON I-74

CONSTRUCTION

1. FULL DEPTH DECK REPAIR (SHIELDING) AND ABUTMENT AND PIER CONCRETE REPAIR.

MAINTENANCE OF TRAFFIC

1. USE STANDARD 701401, "LANE CLOSURE, FREEWAY / EXPRESSWAY" AND STANDARD 701411, "LANE CLOSURE, MULTILANE, AT ENTRANCE OR EXIT RAMP, FOR SPEEDS > 45 MPH".
2. FOR RAMP CLOSURE USE STANDARD 701451.

NOTE: FOR DETOUR ROUTING SEE SHEET NUMBER 6.

LEGEND

	PROPOSED HMA SURFACE REMOVAL, 2" HMA SURFACE COURSE, MIX 'C', N50, 2"
	TEMPORARY CONCRETE BARRIER
	RELOCATED IMPACT ATTENUATOR, TEMPORARY (NON-REDIRECTIVE) TEST LEVEL 3
	TRAFFIC FLOW ARROW
	WORK ZONE
	DRUMS SPACED AT INTERVALS AS NOTED
	TEMPORARY SIGN WITH MESSAGE

MOT 04

FILE NAME =D264H71-sht-stage01.d4.dgn
 PLOT DATE =1/24/2012
 PLOT SCALE=50.0000' / IN.

CHRISTIAN-ROGE & ASSOCIATES, INC.
 ENGINEERS-PLANNERS-SURVEYORS
 211 WEST WACKER DRIVE
 CHICAGO, ILLINOIS 60606
 PHONE: (312)372-2023 FAX: (312)372-5274

DESIGNED - E.M.	REVISED -
DRAWN - B.K.	REVISED -
CHECKED - G.F.L.	REVISED -
DATE - JANUARY 2012	REVISED -

STATE OF ILLINOIS
DEPARTMENT OF TRANSPORTATION

TRAFFIC CONTROL AND PROTECTION PLAN
I-74 AT IL ROUTE 5
STAGE I
 SCALE: 1" = 50' SHEET NO. OF SHEETS STA. TO STA.

F.A.S. RTE.	SECTION	COUNTY	TOTAL SHEETS	SHEET NO.
205	(81-2HB-1)M	ROCK ISLAND	29	10
				CONTRACT NO. 64H71
ILLINOIS				