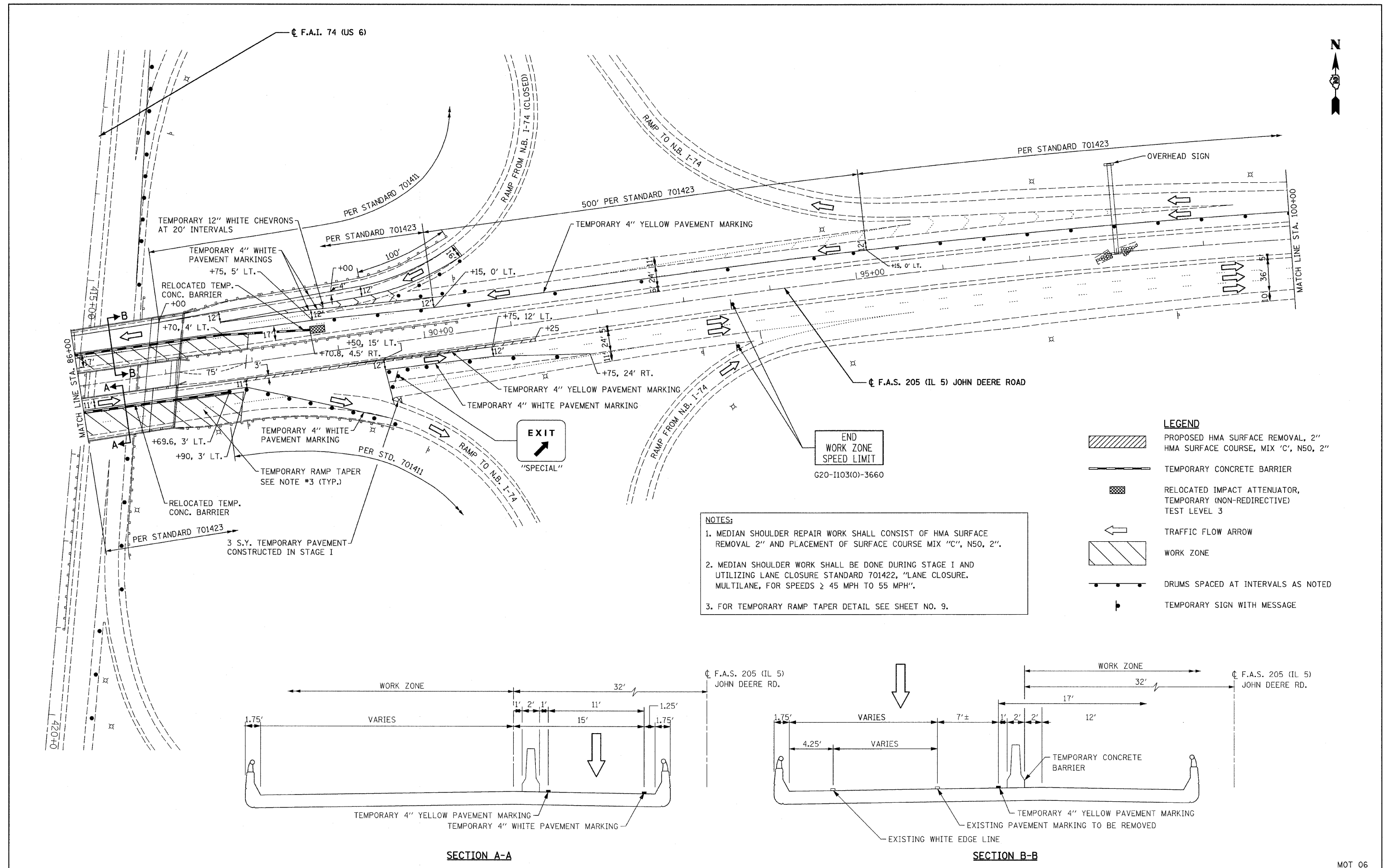


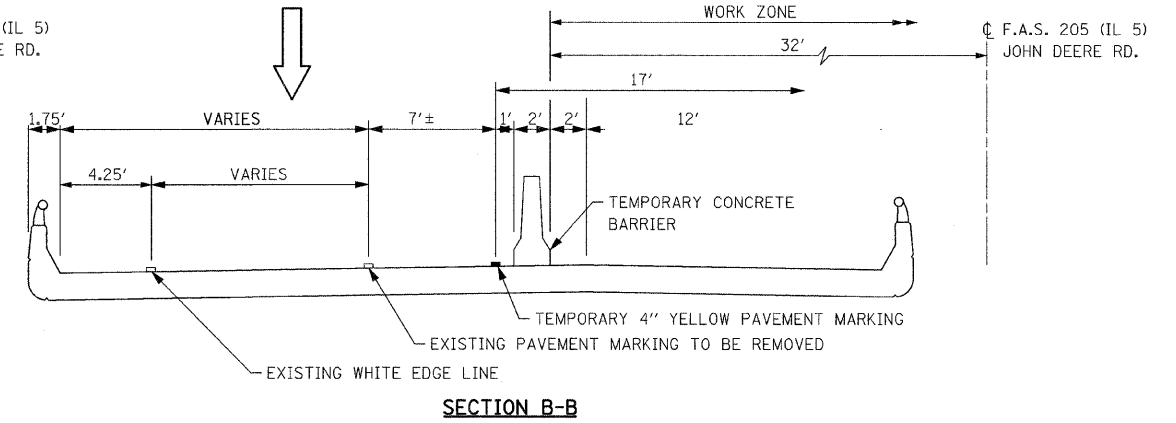
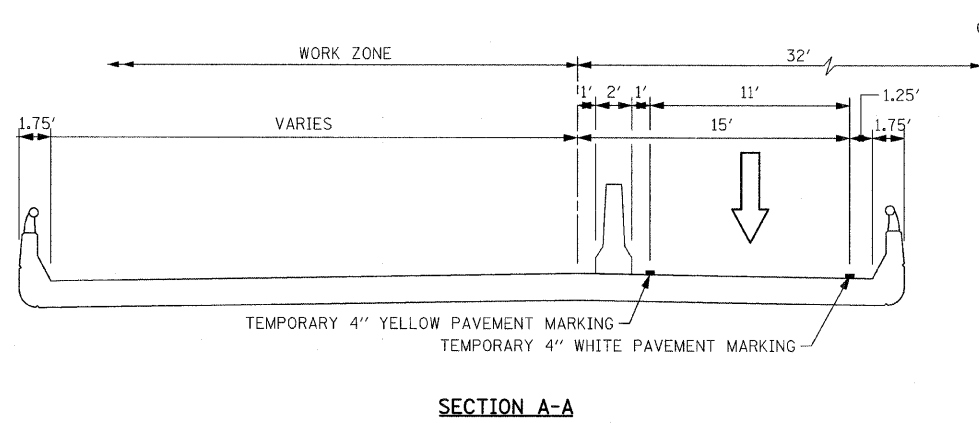
DATE	
BY	
FINAL SURVEY	
NOTED	
PLOTTED	
TEMPLATE	
NO. BOOK	
AREAS CHECKED	

DATE	
BY	
ORIGINAL SURVEY	
NOTED	
PLOTTED	
TEMPLATE	
NO. BOOK	
AREAS CHECKED	



- LEGEND**
- PROPOSED HMA SURFACE REMOVAL, 2" HMA SURFACE COURSE, MIX "C", N50, 2"
 - TEMPORARY CONCRETE BARRIER
 - RELOCATED IMPACT ATTENUATOR, TEMPORARY (NON-REDIRECTIVE) TEST LEVEL 3
 - TRAFFIC FLOW ARROW
 - WORK ZONE
 - DRUMS SPACED AT INTERVALS AS NOTED
 - TEMPORARY SIGN WITH MESSAGE

- NOTES:**
1. MEDIAN SHOULDER REPAIR WORK SHALL CONSIST OF HMA SURFACE REMOVAL 2" AND PLACEMENT OF SURFACE COURSE MIX "C", N50, 2".
 2. MEDIAN SHOULDER WORK SHALL BE DONE DURING STAGE I AND UTILIZING LANE CLOSURE STANDARD 701422, "LANE CLOSURE, MULTILANE, FOR SPEEDS ≥ 45 MPH TO 55 MPH".
 3. FOR TEMPORARY RAMP TAPER DETAIL SEE SHEET NO. 9.



FILE NAME =D264H71-ah1-stage2.02.dgn
 PLOT DATE =1/24/2012
 PLOT SCALE=56.0000' / IN.

CHRISTIAN-ROGE & ASSOCIATES, INC.
 ENGINEERS-PLANNERS-SURVEYORS
 211 WEST WACKER DRIVE
 CHICAGO, ILLINOIS 60606
 PHONE: (312)372-2023 FAX: (312)372-5274

DESIGNED	- E.M.	REVISED	-
DRAWN	- B.K.	REVISED	-
CHECKED	- G.F.L.	REVISED	-
DATE	- JANUARY 2012	REVISED	-

STATE OF ILLINOIS
DEPARTMENT OF TRANSPORTATION

TRAFFIC CONTROL AND PROTECTION PLAN
IL ROUTE 5 AT I-74
STAGE II

SCALE: 1" = 50' SHEET NO. OF SHEETS STA. TO STA.

F.A.S. RTE.	SECTION	COUNTY	TOTAL SHEETS	SHEET NO.
205	(81-2HB-1)M	ROCK ISLAND	29	12
				CONTRACT NO. 64H71
				ILLINOIS

MOT 06