

STATE OF ILLINOIS  
 DEPARTMENT OF TRANSPORTATION  
 DIVISION OF HIGHWAYS

**PROPOSED  
 HIGHWAY PLANS**

VARIOUS ROUTES  
 SECTION D2 BRIDGE PAINTING 2012-1

MAINTENANCE BRIDGE PAINTING  
 ROCK ISLAND & WHITESIDE COUNTIES

C-92-096-12

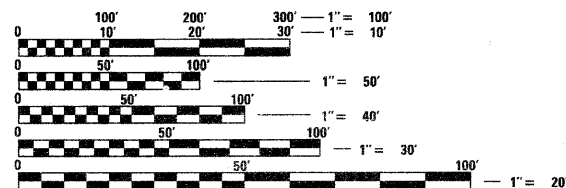
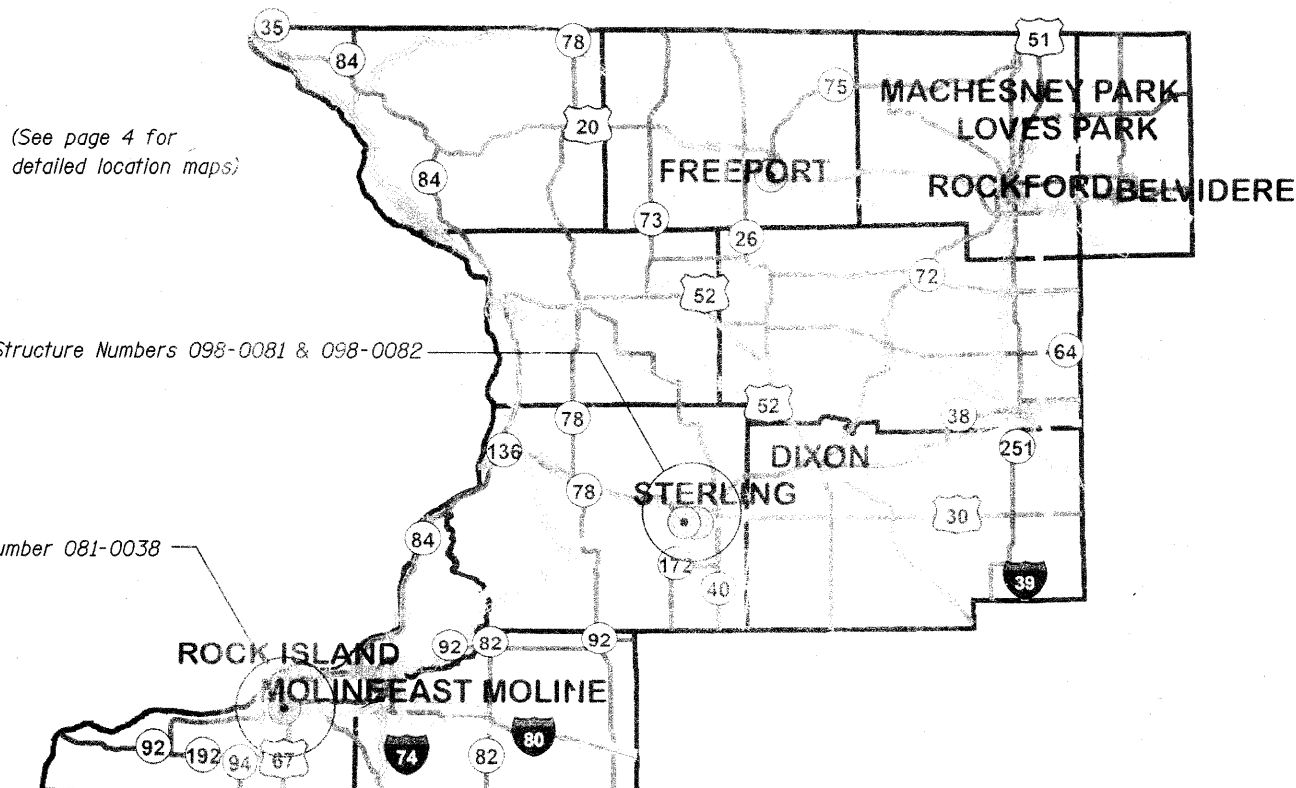
RTE.	SECTION	COUNTY	TOTAL SHEETS	SHEET NO.
VAR	*	ILLINOIS	24	1
ILLINOIS CONTRACT NO. 64H86				

\* D2 Bridge Painting 2012-1

D-92-064-12



FOR INDEX OF SHEETS, SEE SHEET NO. 2



FULL SIZE PLANS HAVE BEEN PREPARED USING STANDARD ENGINEERING SCALES. REDUCED SIZED PLANS WILL NOT CONFORM TO STANDARD SCALES. IN MAKING MEASUREMENTS ON REDUCED PLANS, THE ABOVE SCALES MAY BE USED.

J.U.L.I.E.  
 JOINT UTILITY LOCATION INFORMATION FOR EXCAVATION  
 1-800-892-0123  
 OR 811

BRIDGE MAINTENANCE ENGINEER: Mahmoud Etemadi 815/284-5393  
 BRIDGE PAINTING/PLAN TECHNICIAN: Dan Link 815/284-5416  
 CONTRACT NO. 64H86

STATE OF ILLINOIS  
 DEPARTMENT OF TRANSPORTATION  
 DIVISION OF HIGHWAYS

SUBMITTED January 25, 2012  
Eric S. Theilman  
 DEPUTY DIRECTOR OF HIGHWAYS, REGION ENGINEER

March 23, 2012  
John D. Baramelli, P.E.  
 acting ENGINEER OF DESIGN AND ENVIRONMENT

March 23, 2012  
William R. Frey, Jr.  
 acting DIRECTOR OF HIGHWAYS, CHIEF ENGINEER

**PRINTED BY THE AUTHORITY  
 OF THE STATE OF ILLINOIS**