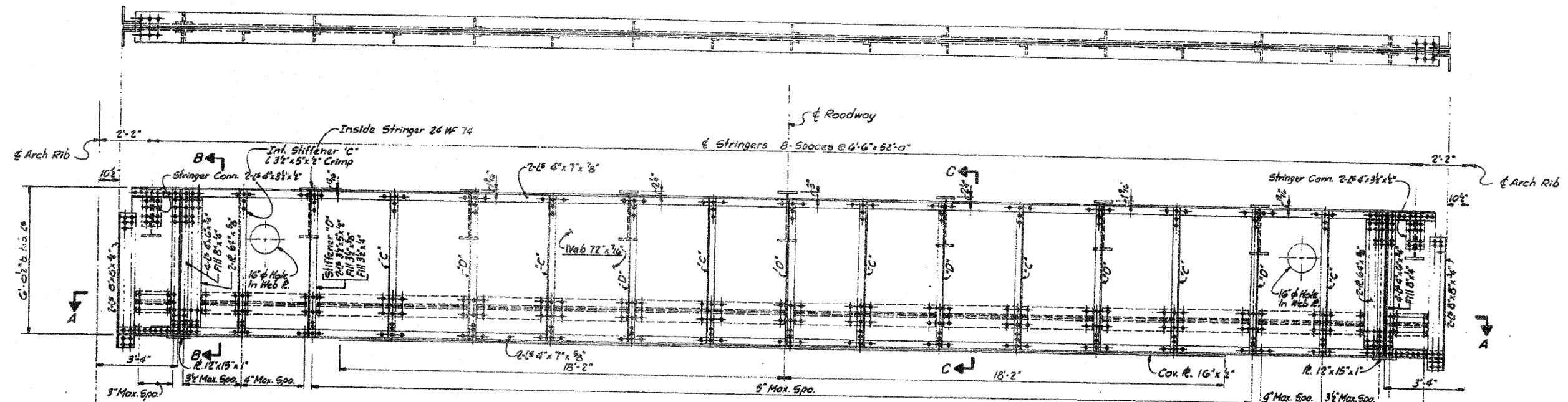
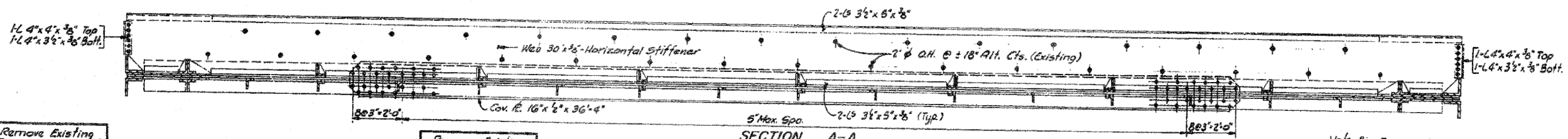


Sht. 13
of 25

ROUTE NO.	SECTION	COUNTY	TOTAL SHEETS	SHEET NO.
599	17(D)BR	ROCK ISLAND	26	26
FED. ROAD DIST. NO. 7 ILL. PROJ. BR. F-599(3)				

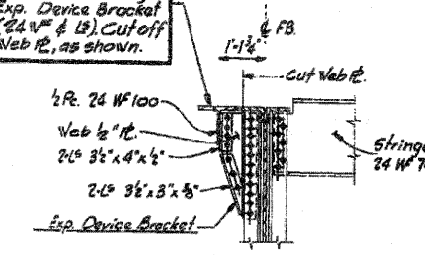


FLOOR BEAMS FB-1 & FB-4
Note: FB-1 & FB-4 similar except for Exp. Device Brackets.



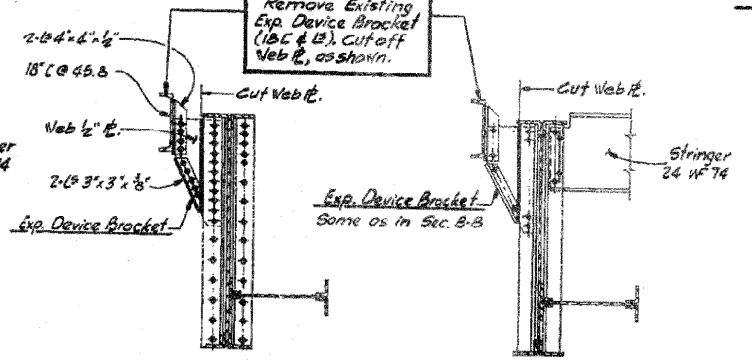
SECTION A-A

Remove Existing Exp. Device Bracket (24 WF 74 & B). Cut off Web B, as shown.



SECTION B-B
Sec. C-C Similar
DETAIL AT NORTH ABUT. FB-1

Remove Existing Exp. Device Bracket (18 C & B). Cut off Web B, as shown.



SECTION B-B
SECTION C-C
DETAILS AT PIER #1 FB-4

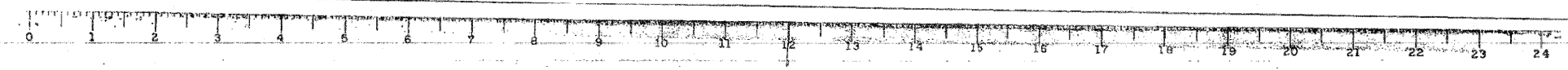
All structural steel shown on this sheet is existing, unless otherwise noted.

Note B: Remove all unsound, loose, and deteriorated rivets one (1) at a time as identified by the Engineer and replace with 3/8" H.S. Bolts, A-325 F Billet as "Rivet Removal and Replacement" (Typ., See Special Provision).
Est. Wt. = 1720 Lbs. (for two FB)

Work this sheet with sheet 12
Sta. 24+38.25

ILLINOIS DIVISION OF HIGHWAYS			
F.A. ROUTE 599			
PROJECT BR-F-599(3)		SECTION 17(D)BR	
ROCK ISLAND COUNTY			
END FLOOR BEAMS-NORTH CHANNEL			
Designed By: SK	Drawn By: JC	Quantity By: RB	
Checked By: DK	Checked By: SA	Checked By: SK	
Revised:			

TORNROSE, CAMPBELL & ASSOCIATES



FILE NAME =	USER NAME = linkdj	DESIGNED -	REVISED -	STATE OF ILLINOIS DEPARTMENT OF TRANSPORTATION	SCALE: _____ SHEET NO. ____ OF ____ SHEETS STA. _____ TO STA. _____	SECTION	COUNTY	TOTAL SHEETS	SHEET NO.	
D:\BR\bridge\Painting\CONTRACTS\PAINTING	2012-1\PLAN\eng-dgn	DRAWN -	REVISED -			var	D2 Bridge Painting 2012-1	var	24	12
	PLOT SCALE = 50.0138' / in.	CHECKED -	REVISED -			CONTRACT NO. 64H86				
	PLOT DATE = Wed Jan 25 14:16:29 2012	DATE -	REVISED -			ILLINOIS FED. AID PROJECT				