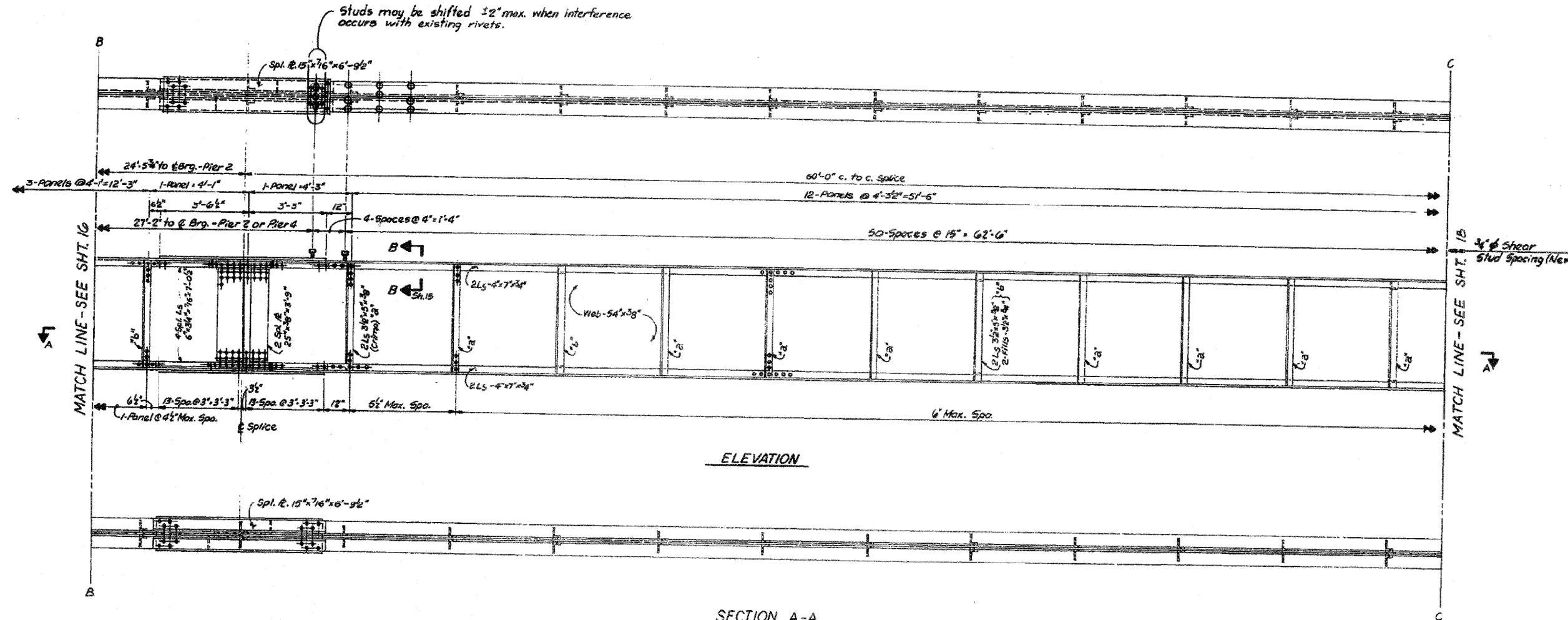


SM. 17  
of 25

ROUTE NO.	SECTION	COUNTY	TOTAL SHEETS	SHEET NO.
FA. RTE. 599	(7)(D) BR	ROCK ISLAND	80	30
FED. ROAD DIST. NO. 7	ILLINOIS PROJ. BR-F-599(3)			



ELEVATION

SECTION A-A

All structural steel shown on this sheet is existing, unless otherwise noted.

See note 'B' on sheet 15.  
Work this sheet with sheets 12, 15, 16 & 18.

Sta. 24+38.25

ILLINOIS DIVISION OF HIGHWAYS		
FA. ROUTE 599		
PROJECT BR-F-599(3)	SECTION (7)(D) BR	
ROCK ISLAND COUNTY		
TYPICAL GIRDER - NORTH CHANNEL		
Designed By: S.R.	Drawn By: J.C.	Quantities By: RB
Checked By: E.D.	Checked By: S.R.	Checked By: SK
Revised July 19, 1984 RWS		

TORNROSE, CAMPBELL & ASSOCIATES



FILE NAME =	USER NAME = lunkdj	DESIGNED -	REVISED -	STATE OF ILLINOIS DEPARTMENT OF TRANSPORTATION	SCALE: _____ SHEET NO. _____ OF _____ SHEETS STA. _____ TO STA. _____	SECTION	COUNTY	TOTAL SHEETS	SHEET NO.	
0:\BR\Bridg Painting\Contracts\PAINTING\2012-1\PLA\Neng.dgn	2012-1\PLA\Neng.dgn	DRAWN -	REVISED -			var	D2 Bridge Painting 2012-1	var	24	16
PLOT SCALE = 50.0138' / in.		CHECKED -	REVISED -			CONTRACT NO. 64H86				
PLOT DATE = Wed Jan 25 14:32:25 2012		DATE -	REVISED -			ILLINOIS FED. AID PROJECT				