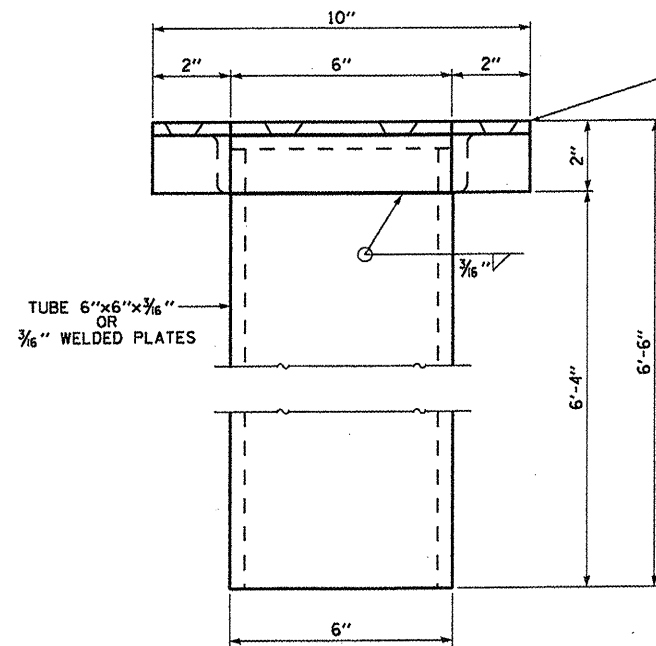
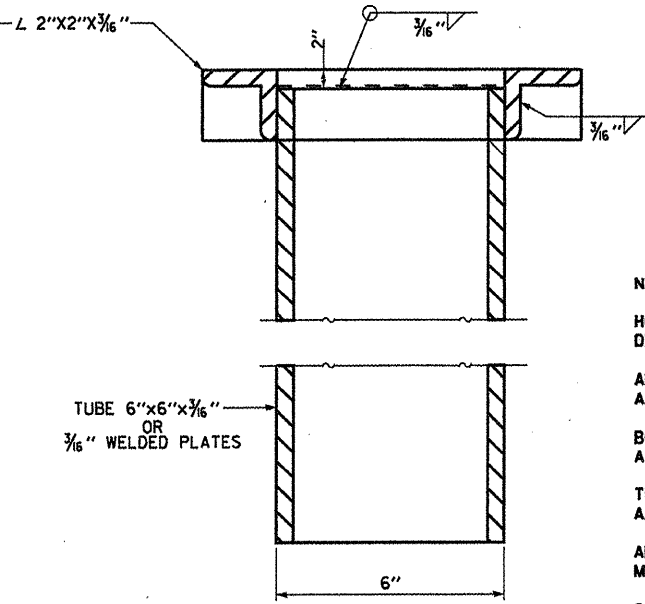


FILL CORNER WITH WELD AT TOP

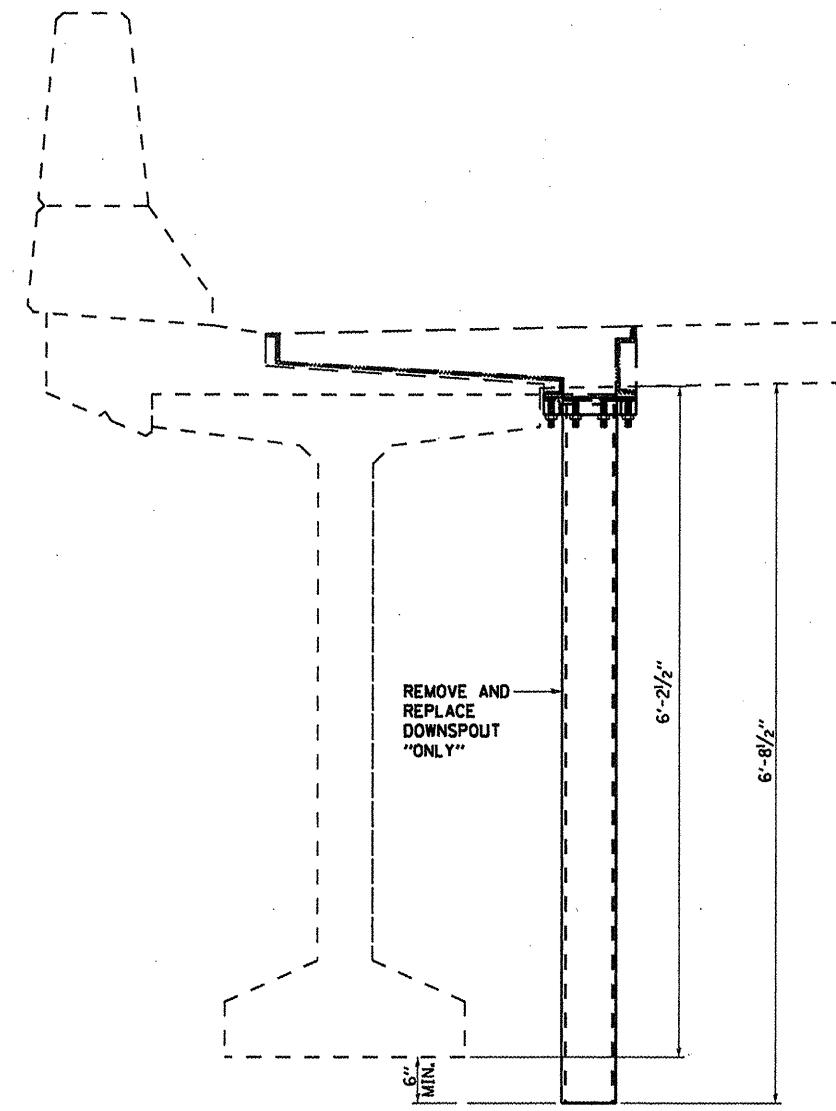
7/16" Ø HOLES COUNTERSUNK (TYP.)



**DOWNSPOUT**



**SECTION A-A**



**SECTION AT CURB**

**NOTES:**

HOLLOW STRUCTURAL STEEL TUBING SHALL CONFORM TO THE REQUIREMENTS OF A.S.T.M. DESIGNATION A-500 GRADE B, OR A-501 STRUCTURAL STEEL TUBING.

ALL OTHER SHAPES, PLATES AND BARS SHALL CONFORM TO THE REQUIREMENTS OF A.A.S.H.T.O. M183.

BOLTS, STUDS, WASHERS AND NUTS SHALL CONFORM TO THE REQUIREMENTS OF A.S.T.M. A-307.

THE DOWNSPOUT SHALL BE GALVANIZED AFTER SHOP FABRICATION IN ACCORDANCE WITH A.A.S.H.T.O. M-111 & A.S.T.M. A-385.

ALL BOLTS, WASHERS AND NUTS SHALL BE GALVANIZED IN ACCORDANCE WITH A.A.S.H.T.O. M 232.

COST OF THE DOWNSPOUT, BOLTS, WASHERS AND NUTS INCLUDING COMPLETE INSTALLATION SHALL BE PAID FOR AS "FLOOR DRAIN EXTENSION".

**BILL OF MATERIAL**

ITEM	UNIT	QUANTITY
FLOOR DRAIN EXTENSION	EACH	1

FILE NAME =	USER NAME = pateluj	DESIGNED - RON WOODSHANK	REVISED -
c:\pwwork\pwwork\pateluj\d0273391\0368899-ahd-detail.dgn		DRAWN - RON WOODSHANK	REVISED -
PLOT SCALE = 100% 1' = 1"		CHECKED -	REVISED -
PLOT DATE = 2/16/2012		DATE -	REVISED -

STATE OF ILLINOIS  
DEPARTMENT OF TRANSPORTATION

**FLOOR DRAIN EXTENSION DETAILS  
FOR SN 050-0220 (E.B.)**

SCALE: SHEET 9 OF 9 SHEETS STA. 669+98.20 TO STA. 674+40.66

F.A.I. RTE.	SECTION	COUNTY	TOTAL SHEETS	SHEET NO.
80	(50-2BR)I	LASALLE	29	20
			CONTRACT NO. 66889	
ILLINOIS FED. AID PROJECT				