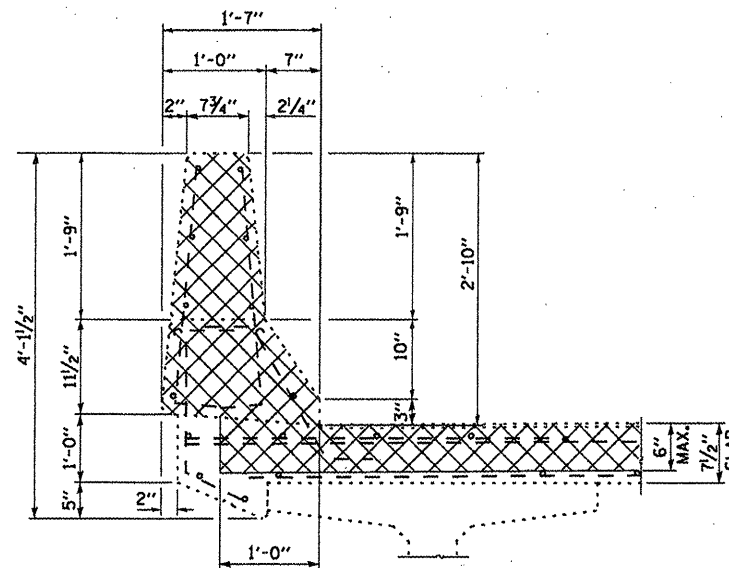
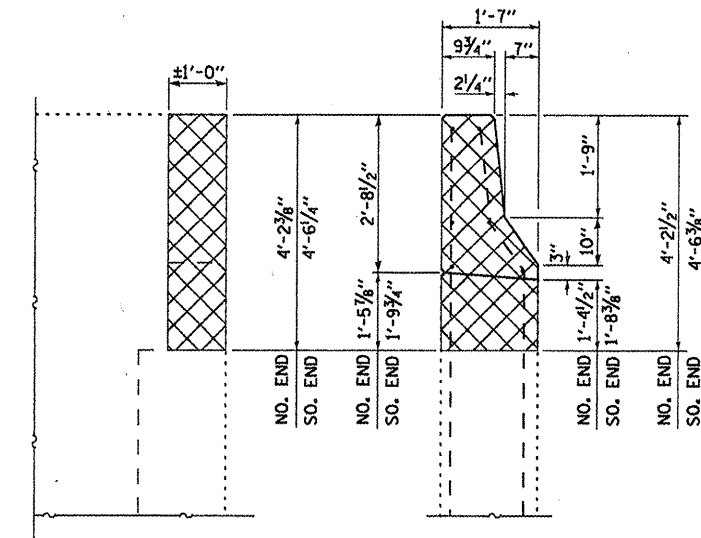


SECTION C-C



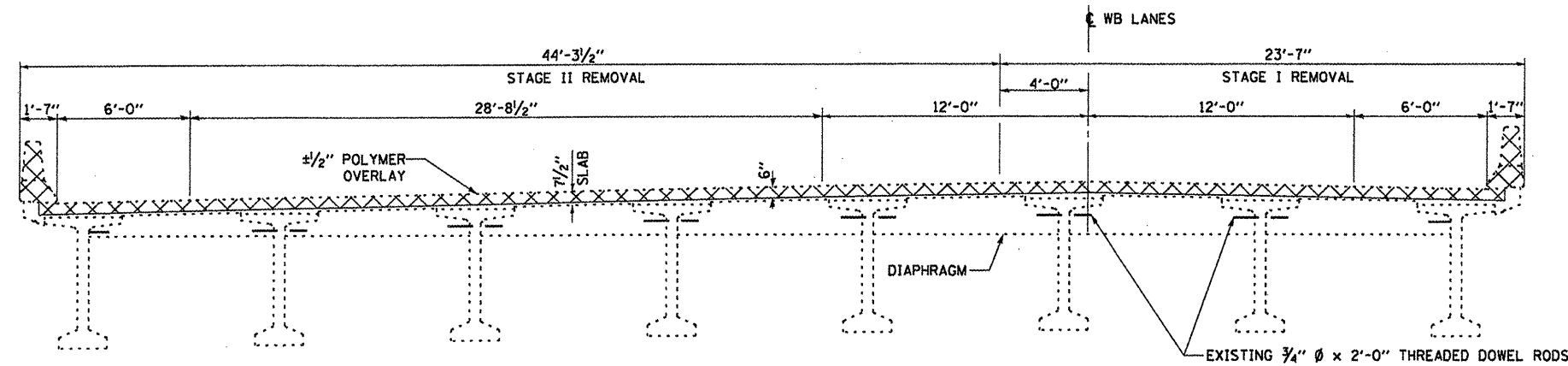
SECTION AT CURB



ELEVATION

END ELEVATION

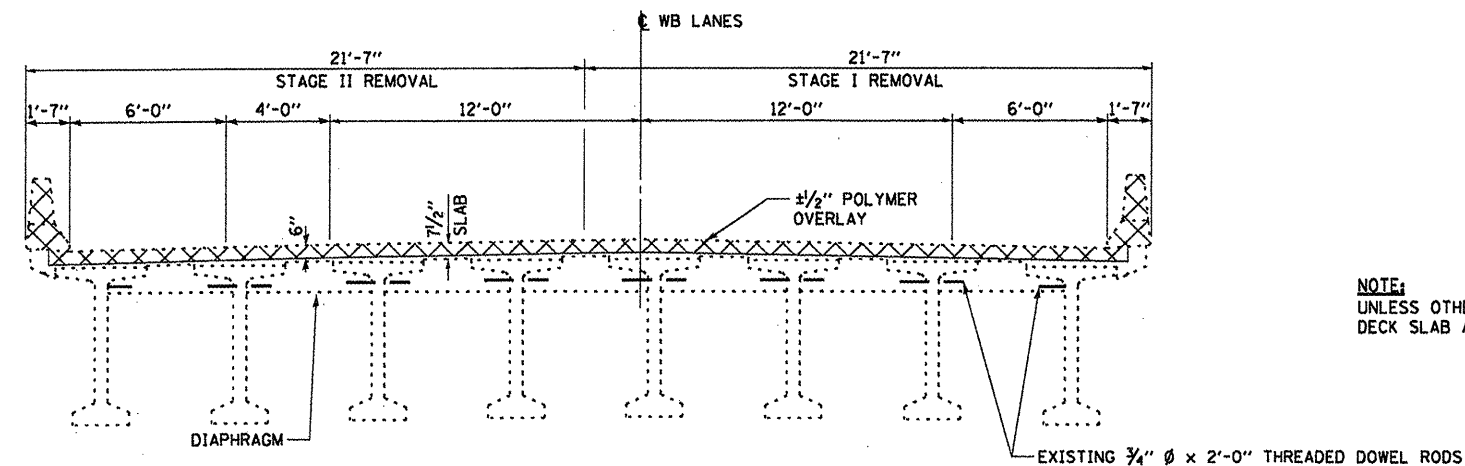
W. ABUT. WINGWALL



CROSS SECTION AT WEST ABUTMENT

LOOKING EAST

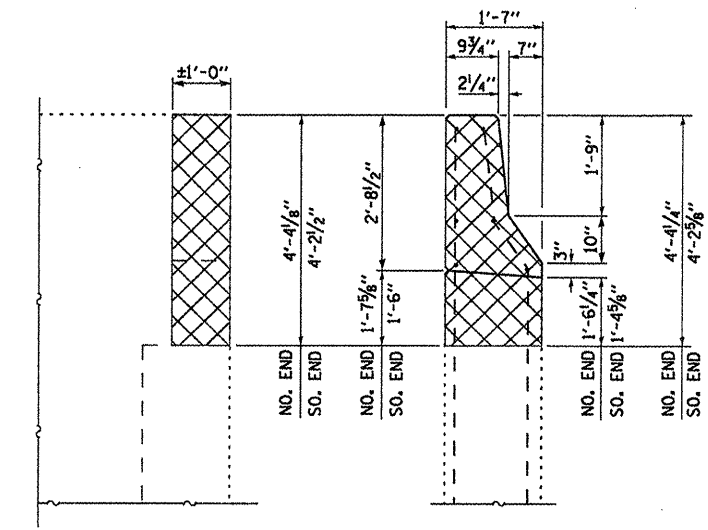
MEASUREMENTS ARE AT RIGHT ANGLES TO CENTERLINE



CROSS SECTION AT EAST ABUTMENT

LOOKING EAST

MEASUREMENTS ARE AT RIGHT ANGLES TO CENTERLINE



ELEVATION

END ELEVATION

E. ABUT. WINGWALL

NOTE:
UNLESS OTHERWISE NOTED, ALL LONGITUDINAL REINFORCEMENT IN THE DECK SLAB AND PARAPETS SHALL BE CUT OFF 6" FROM FACE OF CONCRETE

FILE NAME =	USER NAME = patelij	DESIGNED - RON WOODSHANK	REVISED -
at\pr\work\pilot\patelij\0273391\0368899-shd-detail.dgn		DRAWN - RON WOODSHANK	REVISED -
	PLOT SCALE = 100% 1" = 10'	CHECKED -	REVISED -
	PLOT DATE = 2/16/2012	DATE -	REVISED -

STATE OF ILLINOIS
DEPARTMENT OF TRANSPORTATION

SUPERSTRUCTURE DETAILS - REMOVAL
FOR SN 050-0221 (W.B.)

F.A.I. RTE.	SECTION	COUNTY	TOTAL SHEETS	SHEET NO.
80	(50-2BR1)	LASALLE	29	23
			CONTRACT NO. 66889	
ILLINOIS FED. AID PROJECT				

SCALE: SHEET 3 OF 9 SHEETS STA. 669+87.98 TO STA. 674+30.65