

**PROPOSED  
HIGHWAY PLANS**

FAP ROUTE 68 (IL 23)  
SECTION (5Z)I

**GUARDRAIL PLACEMENT  
LASALLE COUNTY**

C-93-064-11

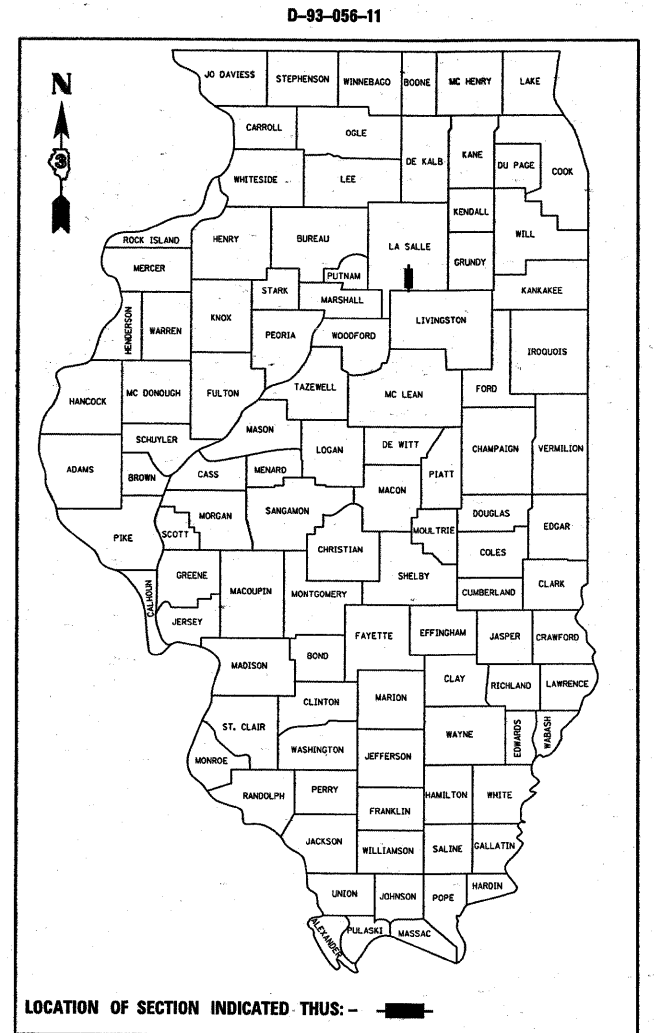
F.A.P. RTE.	SECTION	COUNTY	TOTAL SHEETS	SHEET NO.
68	(5Z)I	LASALLE	8	1
		ILLINOIS	CONTRACT NO. 66B08	

INDEX OF SHEETS

- 1 COVER SHEET
- 2 GENERAL NOTES, SUMMARY OF QUANTITIES, LOCATION MAP
- 3 GUARDRAIL LAYOUT PLAN
- 4-6 DETAILS
- 7-8 FOR INFORMATION ONLY

STANDARDS

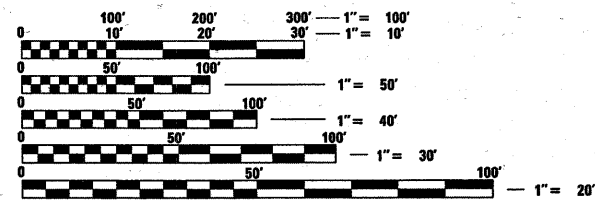
- 000001-06 STANDARD SYMBOLS, ABBREVIATIONS AND PATTERNS
- 420001-07 PAVEMENT JOINTS
- 630001-10 STEEL PLATE BEAM GUARDRAIL
- 631031-10 TRAFFIC BARRIER TERMINAL, TYPE 6
- 635006-03 REFLECTOR AND TERMINAL MARKER PLACEMENT
- 701601-07 URBAN LANE CLOSURE, MULTILANE, 1W OR 2W WITH NONTRAVERSABLE MEDIAN
- 701801-05 LANE CLOSURE, MULTILANE 1W OR 2W CROSSWALK OR SIDEWALK CLOSURE
- 701901-02 TRAFFIC CONTROL DEVICES



PROJECT LOCATION

**IL 23 NORTHBOUND (RENZ DR)  
BETWEEN BLUFF STREET AND  
FIRST STREET IN STREATOR**

**OTHER PRINCIPAL ARTERIAL**  
ADT 2011=9,300  
PV=96.08%, SU=2.96%, MU=0.97%

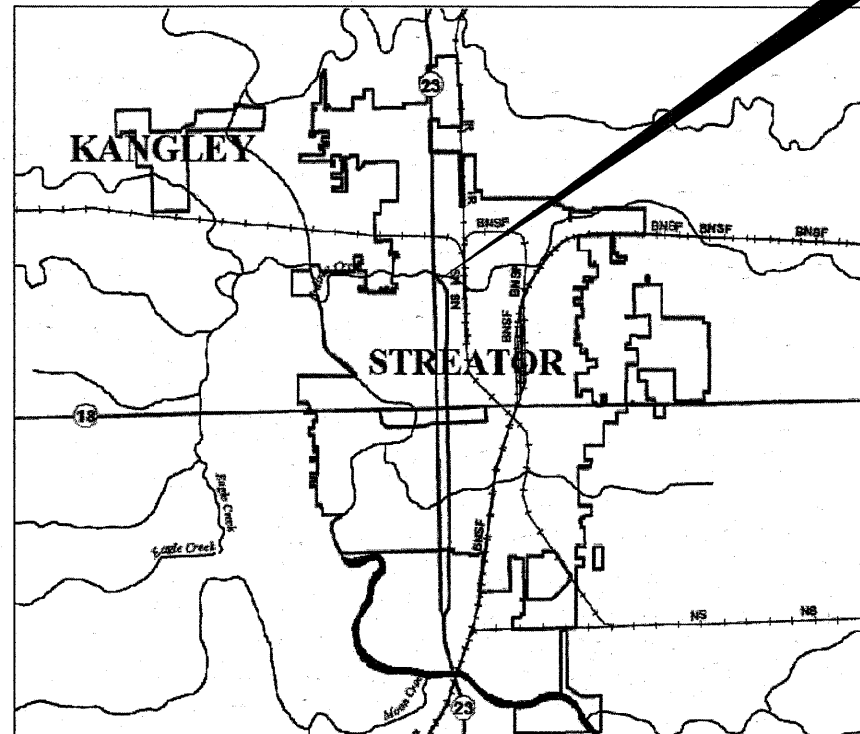


FULL SIZE PLANS HAVE BEEN PREPARED USING STANDARD ENGINEERING SCALES. REDUCED SIZED PLANS WILL NOT CONFORM TO STANDARD SCALES. IN MAKING MEASUREMENTS ON REDUCED PLANS, THE ABOVE SCALES MAY BE USED.

J.U.L.I.E.  
JOINT UTILITY LOCATION INFORMATION FOR EXCAVATION  
1-800-892-0123  
OR 811

**PROJECT ENGINEER MARK JONES, P.E.  
PROJECT MANAGER CRAIG REED, P.E.**

**CONTRACT NO. 66B08**



GROSS LENGTH = 272 FT. = 0.052 MILE  
NET LENGTH = 272 FT. = 0.052 MILE

STATE OF ILLINOIS  
DEPARTMENT OF TRANSPORTATION  
DIVISION OF HIGHWAYS

SUBMITTED February 10 20 12  
Eric S. Thurnhagen  
DEPUTY DIRECTOR OF HIGHWAYS, REGION ENGINEER

March 23 20 12  
John D. Baranzelli, P.E. Ia  
acting ENGINEER OF DESIGN AND ENVIRONMENT

March 23 20 12  
William R. Frey Ia  
acting DIRECTOR OF HIGHWAYS, CHIEF ENGINEER

**PRINTED BY THE AUTHORITY  
OF THE STATE OF ILLINOIS**

**GENERAL NOTES**

ABANDONED UNDERGROUND UTILITIES THAT CONFLICT WITH CONSTRUCTION SHALL BE DISPOSED OF OUTSIDE THE LIMITS OF THE RIGHT OF WAY ACCORDING TO ARTICLE 202.03 OF THE STANDARD SPECIFICATIONS AND AS DIRECTED BY THE ENGINEER. THIS WORK WILL NOT BE PAID FOR SEPARATELY, BUT SHALL BE INCLUDED IN THE COST OF EARTH EXCAVATION.

ANY REFERENCE TO A STANDARD IN THESE PLANS SHALL BE INTERPRETED TO MEAN THE EDITION AS INDICATED BY THE SUBNUMBER SHOWN IN THE LIST OF STANDARDS OR THE COPY INCLUDED IN THESE PLANS.

MEMBERS OF JULIE KNOWN TO BE WITHIN THE LIMITS OF THE IMPROVEMENT ARE:

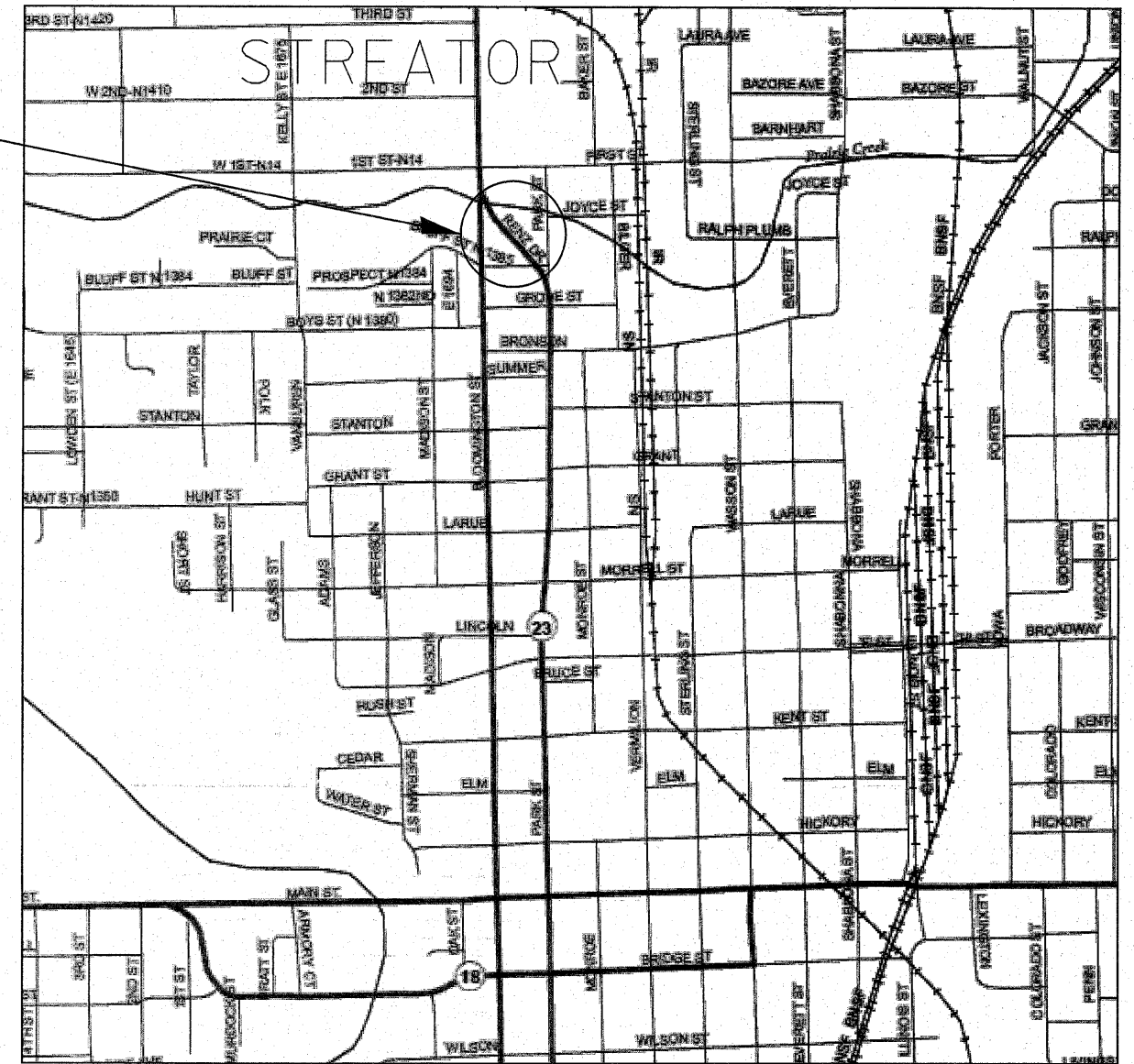
THE CONTRACTOR SHALL CONTACT JULIE AT LEAST 48 HOURS PRIOR TO EXCAVATION TO DETERMINE WHICH UTILITIES ARE IN THE AREA.

UTILITY CONFLICTS ARE NOT ANTICIPATED.

**COMMITMENTS**

1. ANY SURPLUS EXCAVATED EARTH MATERIAL REMAINING AFTER THE COMPLETION OF WORK SHALL REMAIN WITHIN THE PROJECT LIMITS.
2. STEEL RAILING TO BE REMOVED WILL BE SALVAGED AND BECOME PROPERTY OF THE STATE.

**PROJECT LOCATION  
IL 23 NORTHBOUND  
BETWEEN BLUFF STREET AND  
FIRST STREET IN STREATOR**



**SUMMARY OF QUANTITIES**

CODE NO.	ITEM	UNIT	TOTAL QUANTITY	URBAN
				100% STATE ROADWAY 0021 SAFETY
50300225	CONCRETE STRUCTURES	CU YD	0.64	0.64
50800205	REINFORCEMENT BAR, EPOXY COATED	POUND	127	127
63000001	STEEL PLATE BEAM GUARD RAIL, TYPE A, 6 FOOT POSTS	FOOT	72	72
63100085	TRAFFIC BARRIER TERMINAL, TYPE 6	EACH	1	1
63100167	TRAFFIC BARRIER TERMINAL, TYPE 1 (SPECIAL) TANGENT	EACH	1	1
67100100	MOBILIZATION	L SUM	1	1
70102630	TRAFFIC CONTROL AND PROTECTION, STANDARD 701601	L SUM	1	1
78200410	GUARDRAIL MARKERS, TYPE A	EACH	13	13
78201000	TERMINAL MARKER-DIRECT APPLIED	EACH	1	1
X0326519	STEEL RAILING REMOVAL	FOOT	146	146
Z0042300	PORTLAND CEMENT CONCRETE SIDEWALK CURB	FOOT	10	10

STATE OF ILLINOIS  
DEPARTMENT OF TRANSPORTATION  
DISTRICT THREE

PREPARED BY: *David Bonic*  
DISTRICT STUDIES & PLANS ENGINEER

DATE: 2-8-12

EXAMINED BY: *Albert Lopez*  
DISTRICT CONSTRUCTION ENGINEER

*Wayne Phillips*  
DISTRICT MATERIALS ENGINEER

*James A. Winkler*  
DISTRICT OPERATIONS ENGINEER

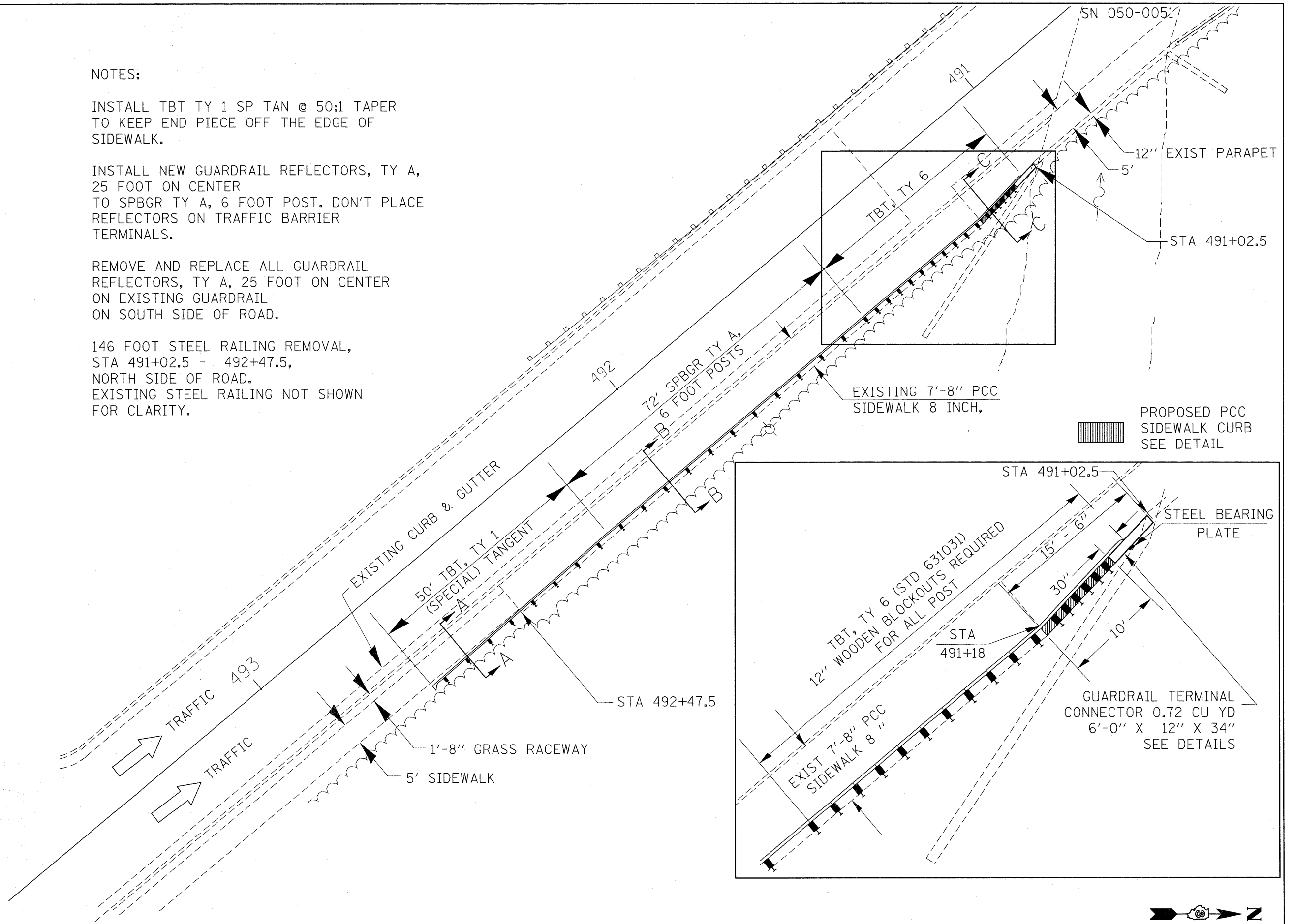
NOTES:

INSTALL TBT TY 1 SP TAN @ 50:1 TAPER TO KEEP END PIECE OFF THE EDGE OF SIDEWALK.

INSTALL NEW GUARDRAIL REFLECTORS, TY A, 25 FOOT ON CENTER TO SPBGR TY A, 6 FOOT POST. DON'T PLACE REFLECTORS ON TRAFFIC BARRIER TERMINALS.

REMOVE AND REPLACE ALL GUARDRAIL REFLECTORS, TY A, 25 FOOT ON CENTER ON EXISTING GUARDRAIL ON SOUTH SIDE OF ROAD.

146 FOOT STEEL RAILING REMOVAL, STA 491+02.5 - 492+47.5, NORTH SIDE OF ROAD. EXISTING STEEL RAILING NOT SHOWN FOR CLARITY.



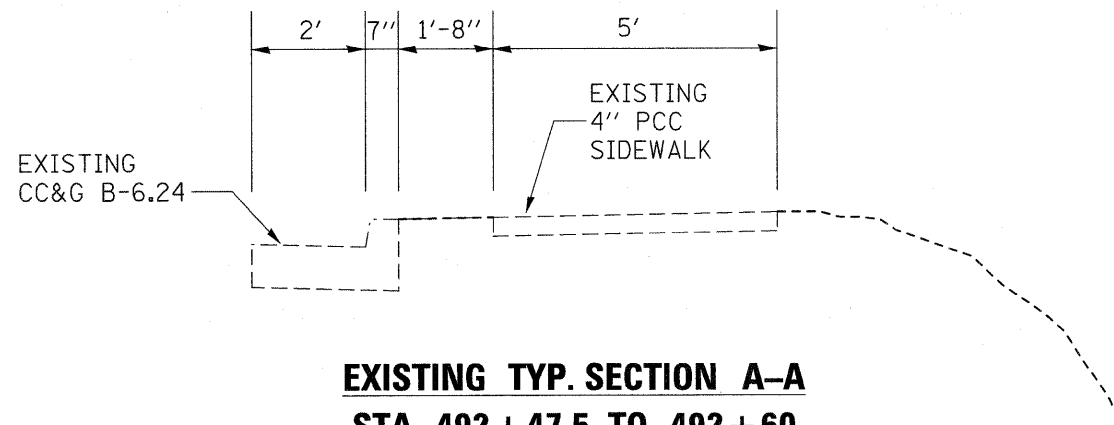
FILE NAME =	USER NAME = administrator	DESIGNED -	REVISD -
ct\pw_work\pwidot\qsgleym\024999\0366808-shd-details.DGN		DRAWN -	REVISD -
PLOT SCALE = 10.0000' / in.		CHECKED -	REVISD -
PLOT DATE = 2/8/2012		DATE -	REVISD -

STATE OF ILLINOIS  
DEPARTMENT OF TRANSPORTATION

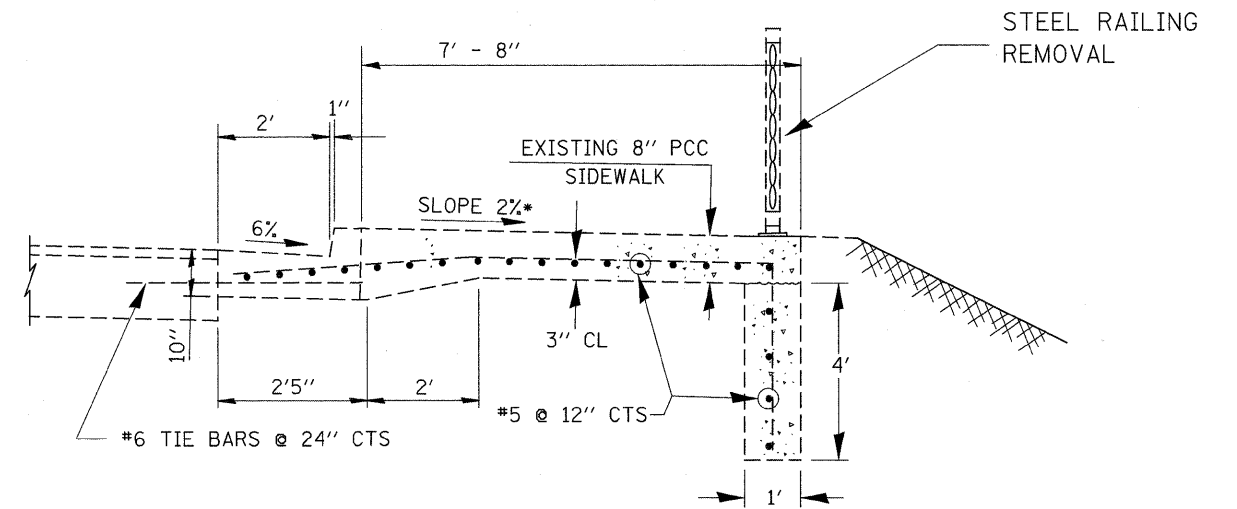
GUARDRAIL LAYOUT PLAN

SCALE: SHEET OF SHEETS STA. TO STA.

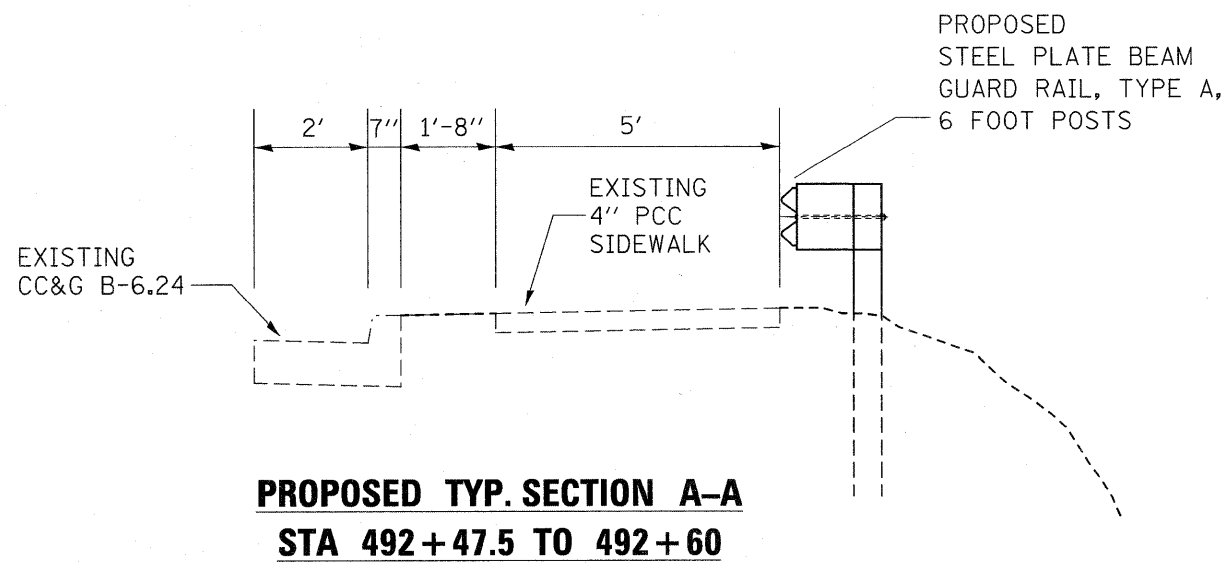
F.A.P. RTE. 68	SECTION (52)I	COUNTY LASALLE	TOTAL SHEETS 8	SHEET NO. 3
ILLINOIS FED. AID PROJECT			CONTRACT NO. 66B08	



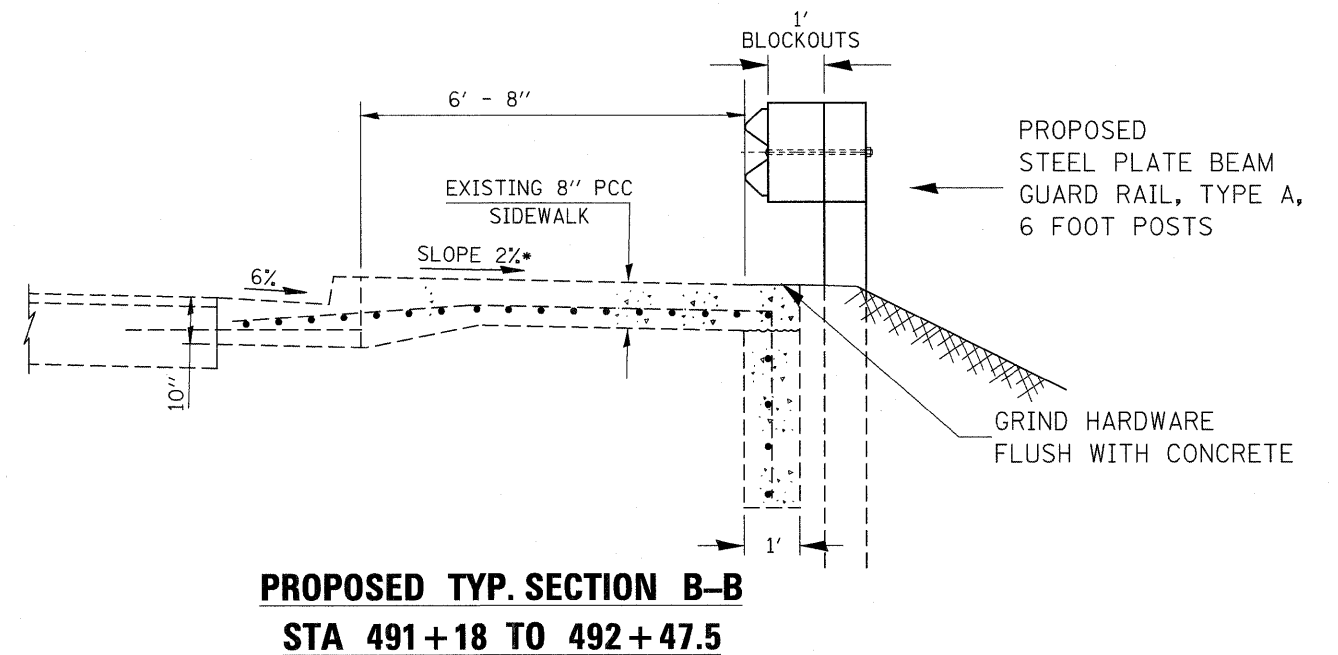
**EXISTING TYP. SECTION A-A  
STA 492+47.5 TO 492+60**



**EXISTING TYP. SECTION B-B  
STA 491+18 TO 492+47.5**



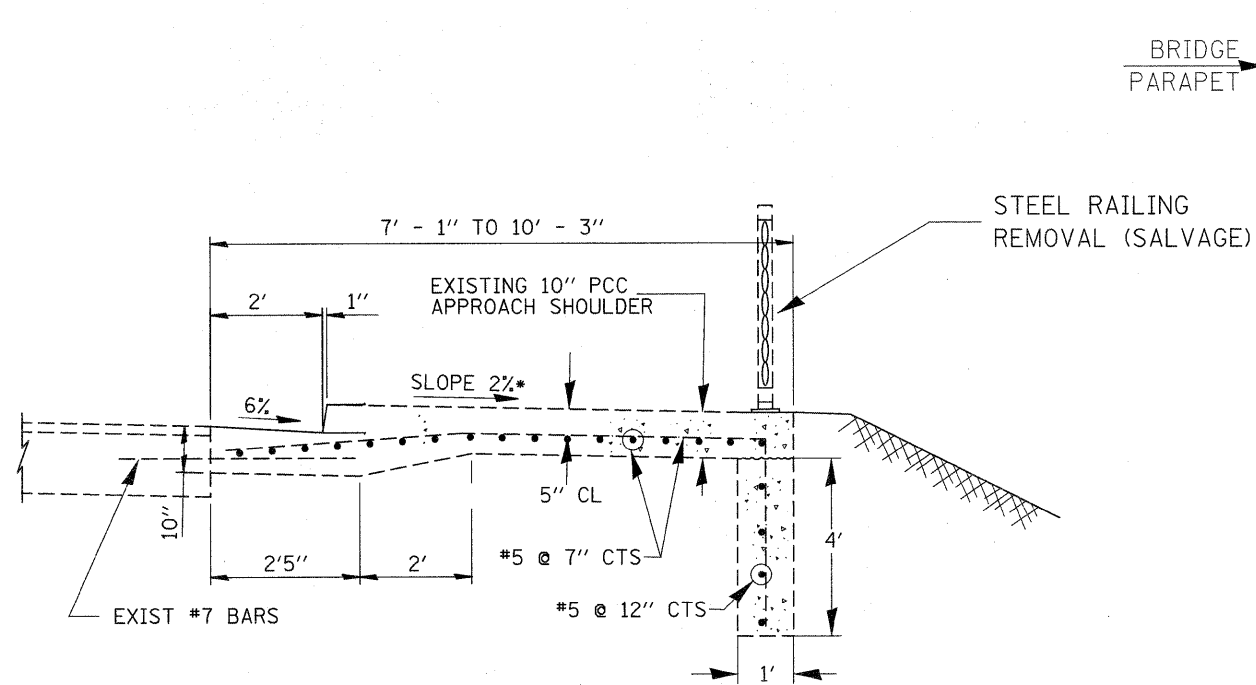
**PROPOSED TYP. SECTION A-A  
STA 492+47.5 TO 492+60**



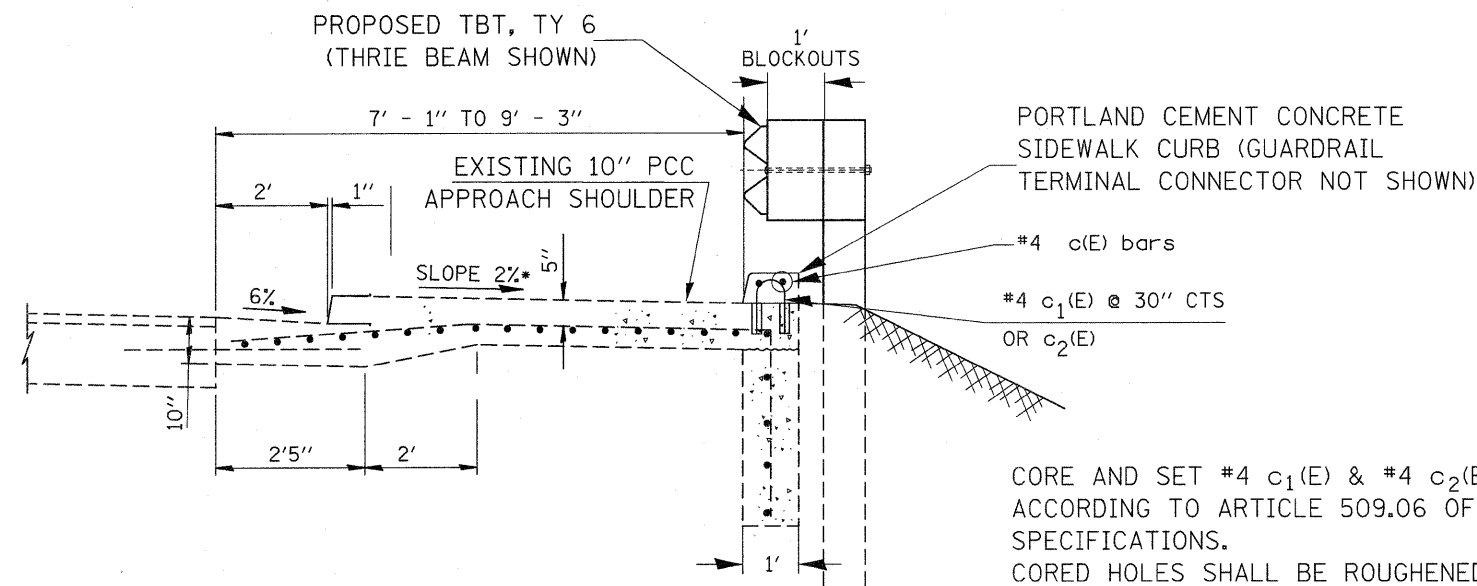
**PROPOSED TYP. SECTION B-B  
STA 491+18 TO 492+47.5**

NOTE:  
STATIONING RUNS  
NORTH TO SOUTH

FILE NAME =	USER NAME = administrator	DESIGNED -	REVISED -	<b>STATE OF ILLINOIS DEPARTMENT OF TRANSPORTATION</b>	<b>DETAIL EXISTING STEEL RAILING AND PROPOSED GUARDRAIL</b>			F.A.P. RTE.	SECTION	COUNTY	TOTAL SHEETS	SHEET NO.
ct:\pw\work\pwwidot\quigley\1\0249990\0366808-sht-details.DGN		DRAWN -	REVISED -		68	(52)I	LASALLE	8	4			
PLOT SCALE = 1/8" = 1'-0"		CHECKED -	REVISED -		CONTRACT NO. 66B08							
PLOT DATE = 2/8/2012		DATE -	REVISED -		ILLINOIS FED. AID PROJECT							
				SCALE:	SHEET	OF	SHEETS	STA.	TO STA.			



**EXISTING TYP. SECTION C-C**



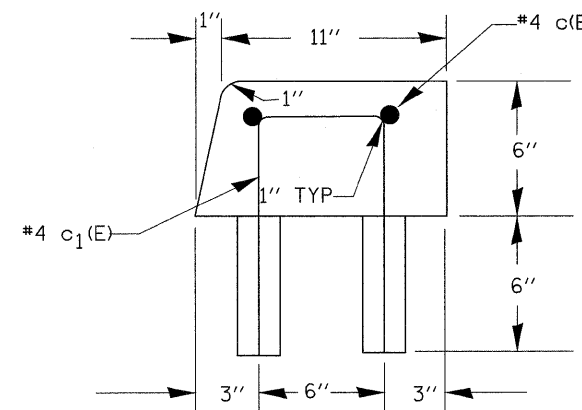
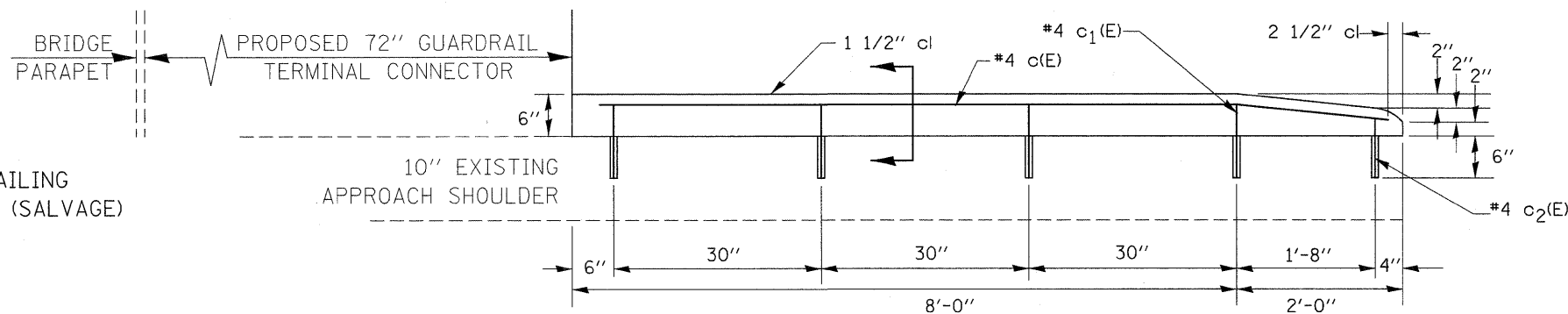
**PROPOSED TYP. SECTION C-C**

CORE AND SET #4 c<sub>1</sub>(E) & #4 c<sub>2</sub>(E) BARS ACCORDING TO ARTICLE 509.06 OF THE STANDARD SPECIFICATIONS. CORED HOLES SHALL BE ROUGHENED OR SCORED PER MANUFACTURER'S RECOMMENDATIONS. MAXIMUM DEPTH OF HOLE SHALL NOT EXCEED 6" (TYP).

REINFORCEMENT BARS DESIGNATED (E) SHALL BE EPOXY COATED.

SEE STD 631031 FOR DETAILS NOT SHOWN.

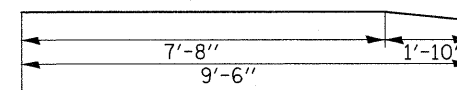
SEE GUARDRAIL LAYOUT PLAN FOR LIMITS OF PCC SIDEWALK CURB.



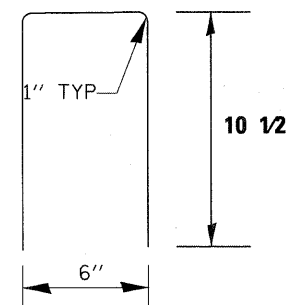
**SECTION VIEW  
PROPOSED PORTLAND CEMENT CONCRETE SIDEWALK CURB**

**BILL OF MATERIALS**

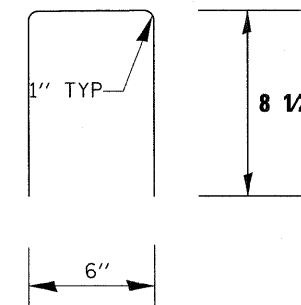
BAR	NO.	SIZE	LENGTH	SHAPE
c <sub>1</sub> (E)	4	4	2' 3"	□
c <sub>2</sub> (E)	1	4	1' 11"	□
c(E)	2	4	9' 6"	—
ITEM			UNIT	QTY.
PCC SIDEWALK CURB			FOOT	10
REINFORCEMENT BAR, EPOXY COATED			LB	20



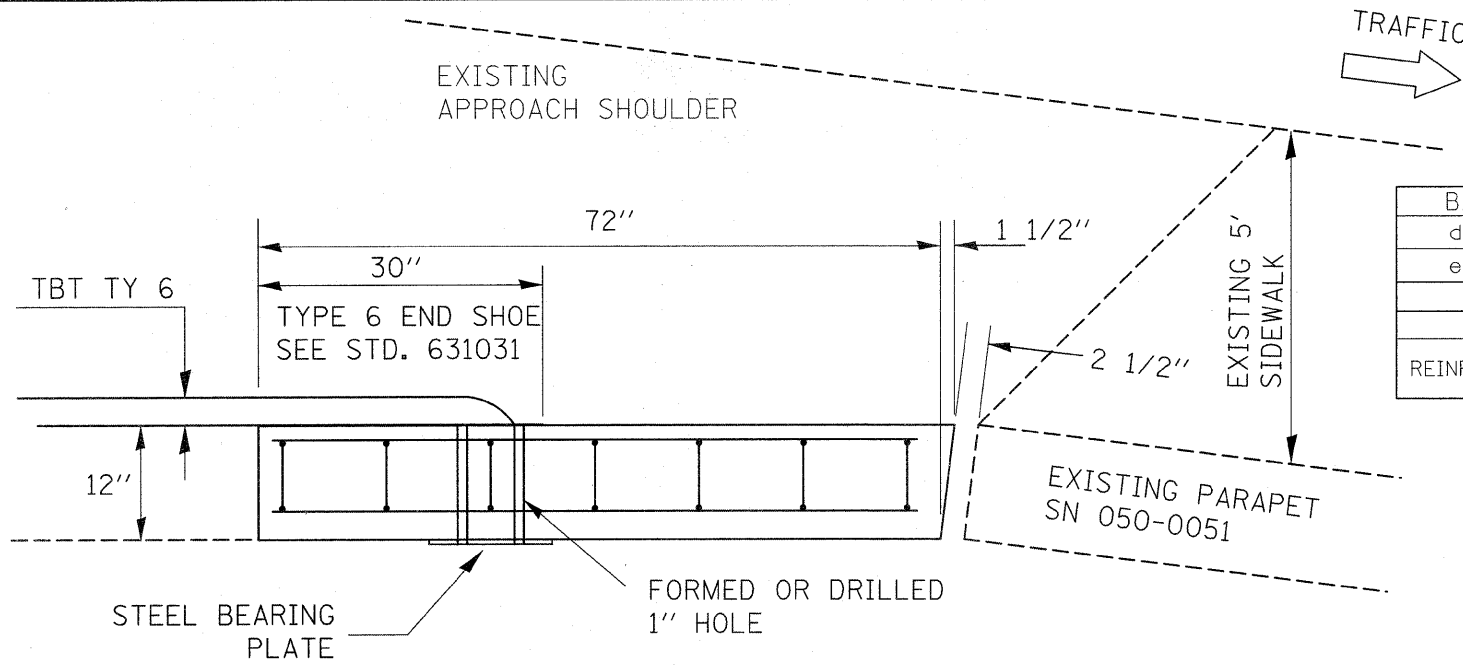
**BAR c(E)**



**BAR c<sub>1</sub>(E)**



**BAR c<sub>2</sub>(E)**

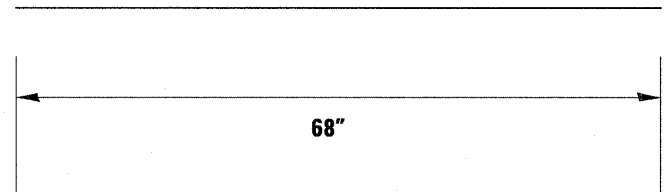


**PLAN**

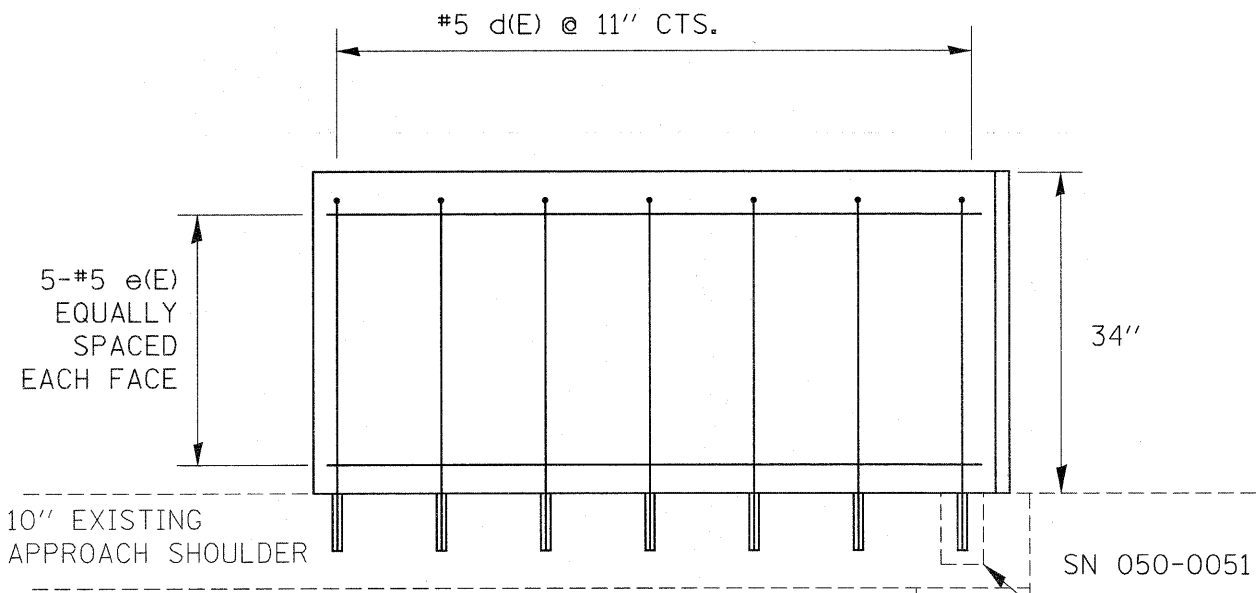
**BILL OF MATERIALS**

BAR	NO.	SIZE	LENGTH	SHAPE
d(E)	7	5	74 1/2"	U
e(E)	10	5	68"	—
ITEM			UNIT	QTY.
CONCRETE STRUCTURE			CU YD	0.64
REINFORCEMENT BAR, EPOXY COATED			LB	107

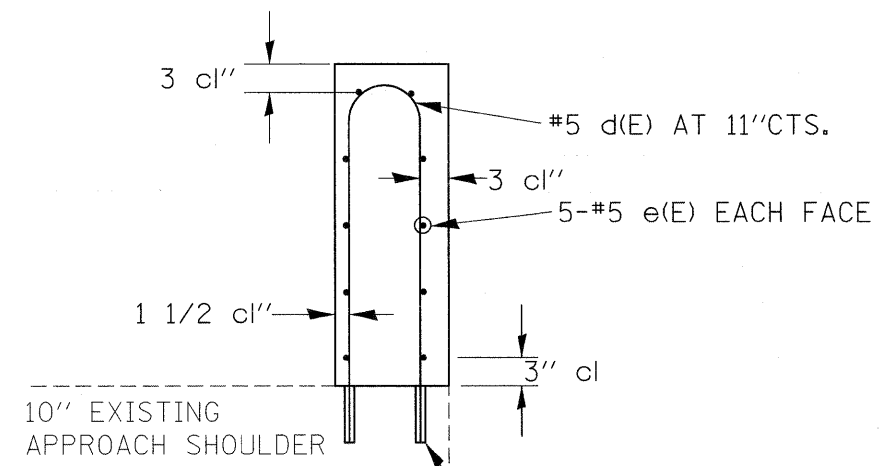
NOTES:  
ALL EDGES SHALL HAVE 3/4" CHAMFER.  
REINFORCEMENT BARS DESIGNATED (E)  
SHALL BE EPOXY COATED.



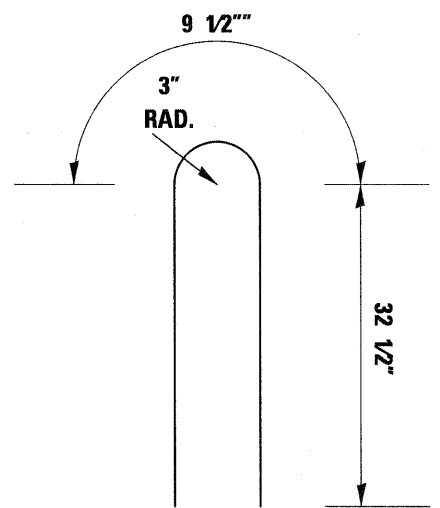
**BAR e(E)**



**ELEVATION**



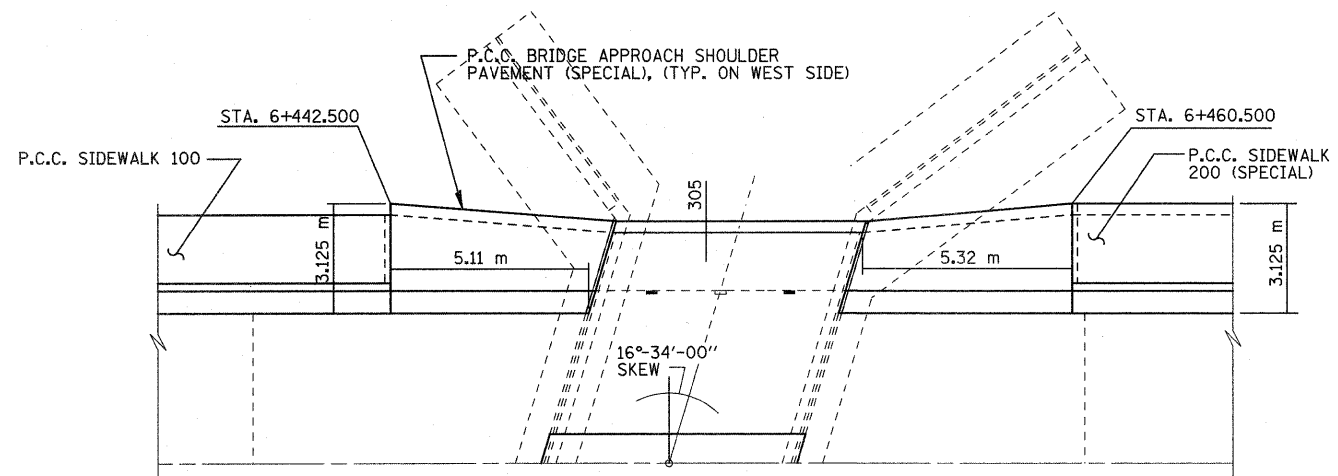
**END**



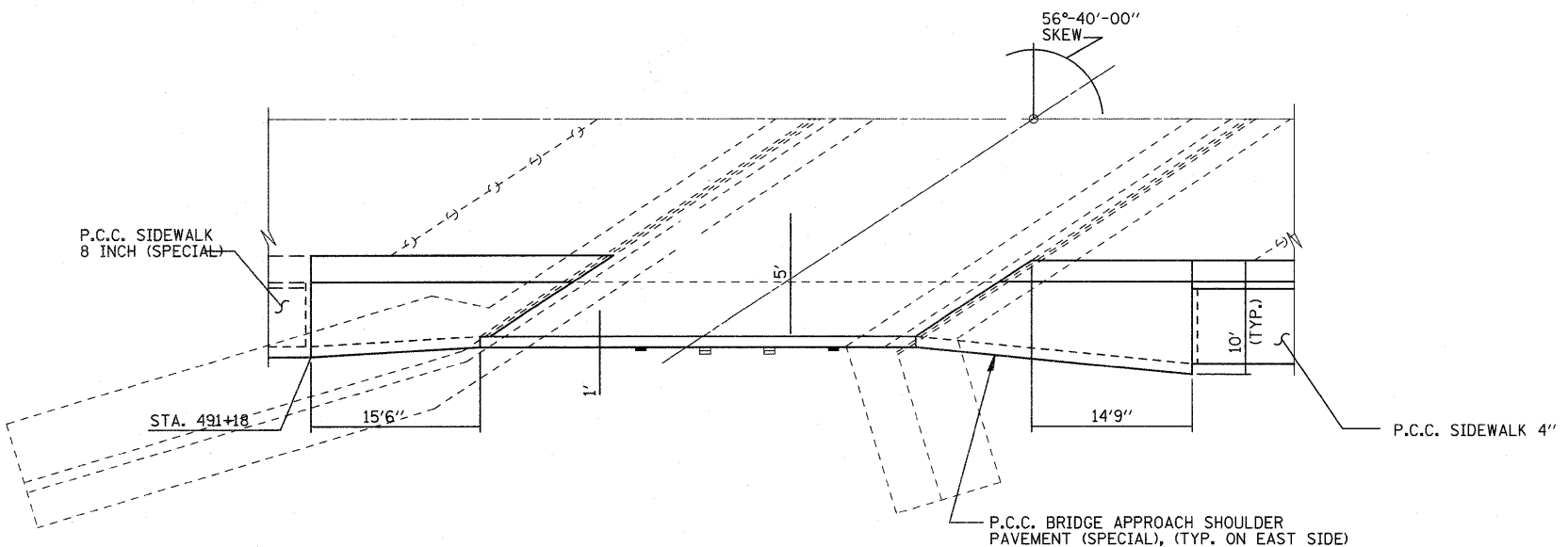
**BAR d(E)**

ADJUST LOCATION  
TO MISS EXISTING  
PEDESTRIAN RAIL  
ANCHOR TAPS

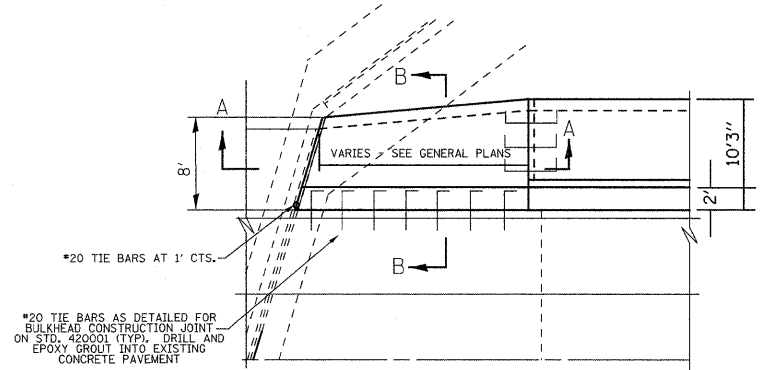
CORE AND SET #5 d (E) BAR ACCORDING TO  
ARTICLE 509.06 OF THE STANDARD SPECIFICATIONS.  
CORED HOLES SHALL BE ROUGHENED OR SCORED PER  
MANUFACTURER'S RECOMMENDATIONS. MAXIMUM  
DEPTH OF HOLE SHALL NOT EXCEED 6" (TYP.).



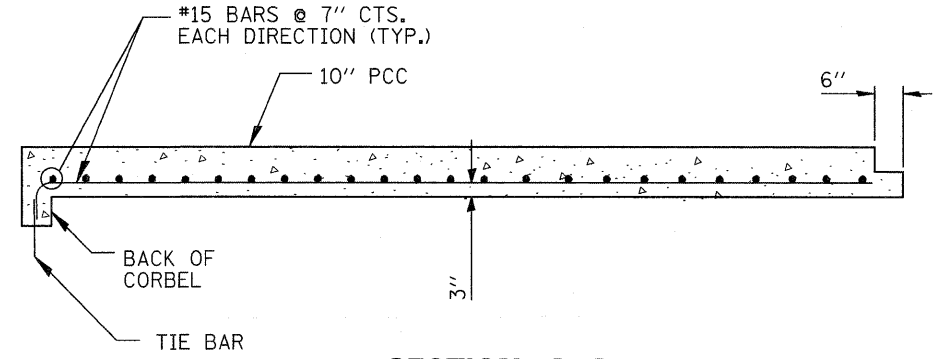
**GENERAL PLAN**  
STRUCTURE NO. 050-0050



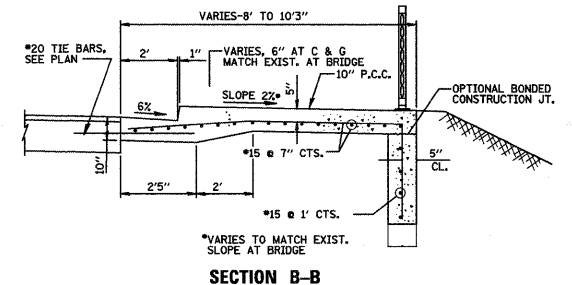
**GENERAL PLAN**  
STRUCTURE NO. 050-0051



**TYPICAL DETAIL PLAN**



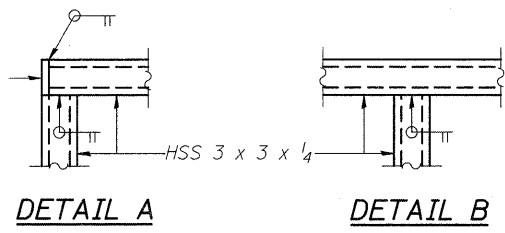
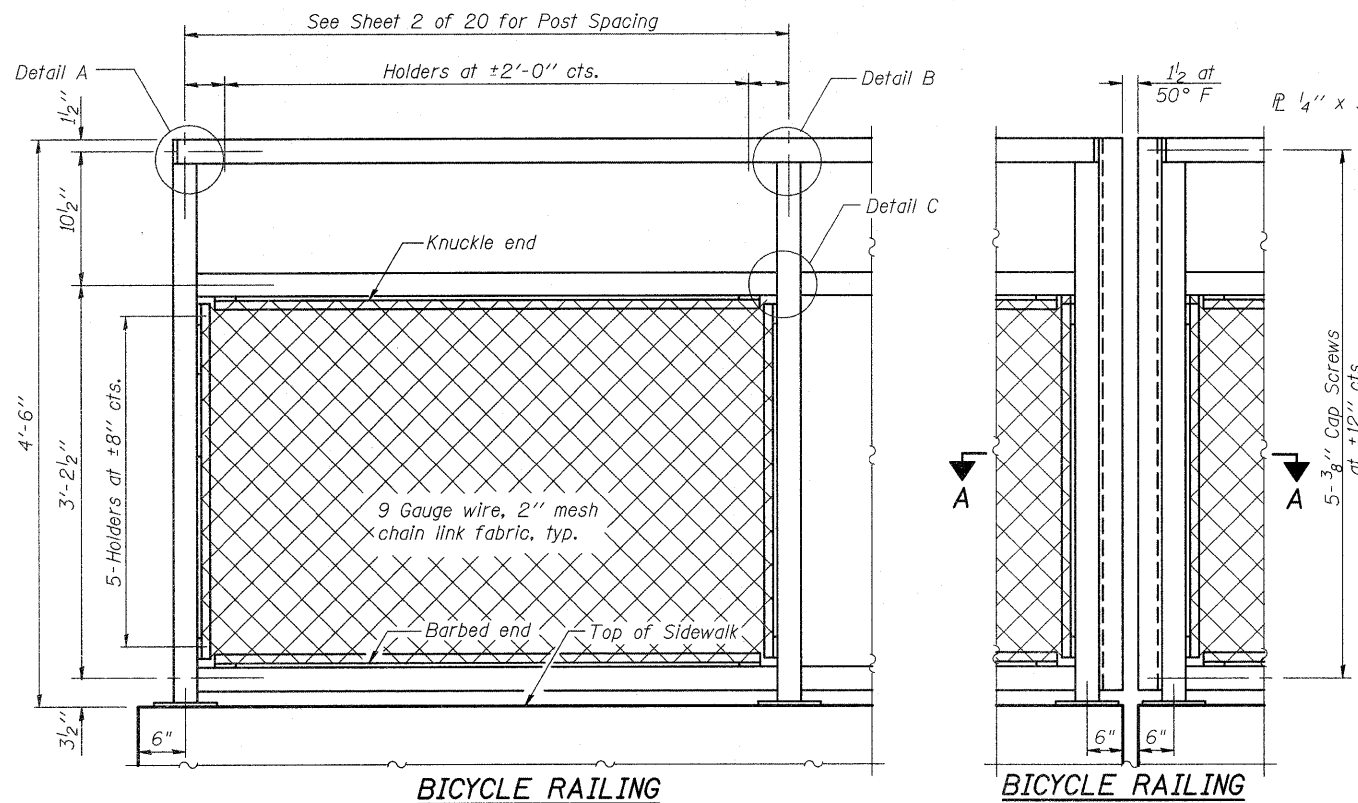
**SECTION A-A**



**SECTION B-B**

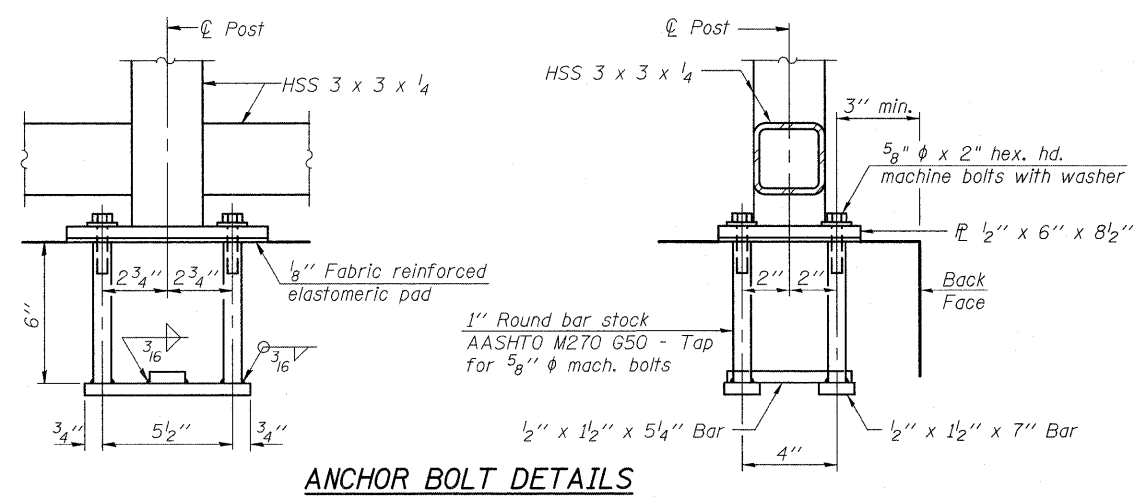
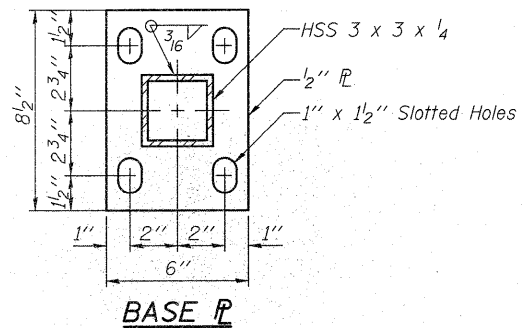
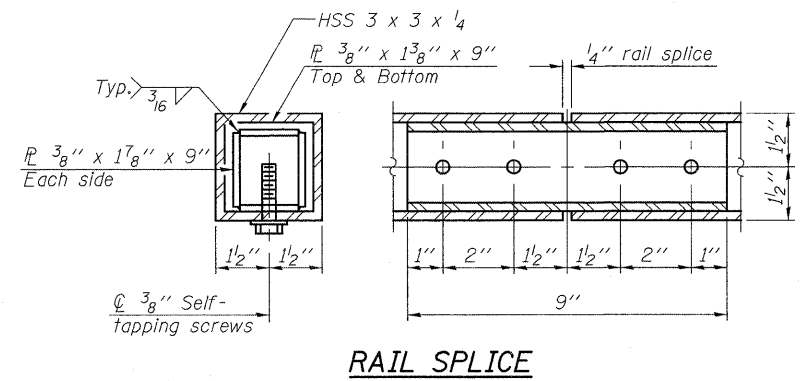
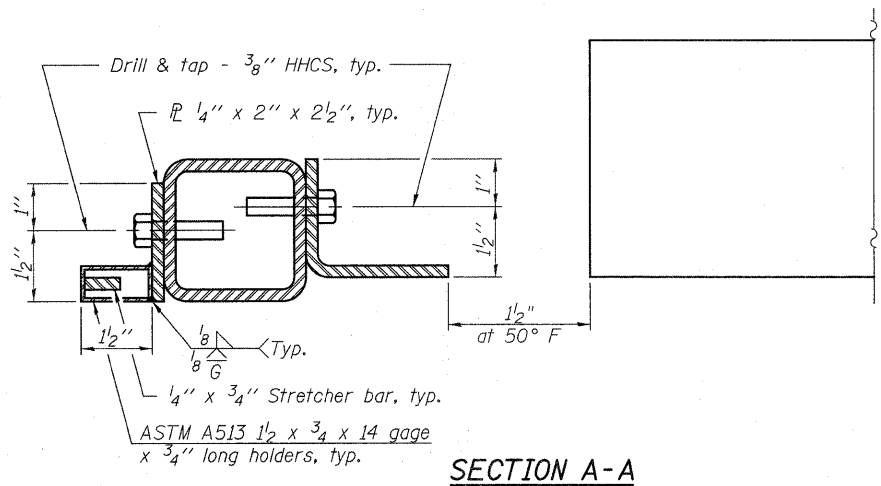
**FOR INFORMATION ONLY**

FILE NAME =	USER NAME = administrator	DESIGNED -	REVISED -	<b>STATE OF ILLINOIS DEPARTMENT OF TRANSPORTATION</b>	<b>DETAIL EXISTING STRUCTURE FOR INFORMATIONAL ONLY</b>			F.A.P. RTE.	SECTION	COUNTY	TOTAL SHEETS	SHEET NO.
c:\pw_work\pwsdot\quigley\m\0249990\0366808-ah-t-detail.dgn	PLOT SCALE = 1/8"=1'-0"	DRAWN -	REVISED -					68	(52)I	LASALLE	8	7
	PLOT DATE = 2/8/2012	CHECKED -	REVISED -		SCALE: SHEET OF SHEETS STA. TO STA.			CONTRACT NO. 66B08				
		DATE -	REVISED -		ILLINOIS FED. AID PROJECT							



All steel rail elements shall be galvanized according to Article 509.05 of the Standard Specifications.

# FOR INFORMATION ONLY

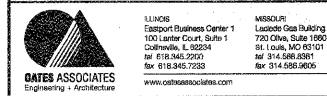


### BILL OF MATERIAL

Item	Unit	Quantity
Bicycle Railing	Foot	216
Parapet Railing	Foot	234

In lieu of the cast-in-place anchor device shown, the Contractor has the option of drilling and setting 5/8"  $\phi$  anchor rods according to Article 509.06 of the Standard Specifications. Embedment shall be according to the manufacturer's specifications.

R-29 7-1-10 (10'-0" Maximum Post Spacing)



USER NAME =	DESIGNED - JAD	REVISOR -
PLOT SCALE =	CHECKED - SUN	REVISOR -
PLOT DATE =	DRAWN - JAD	REVISOR -
	CHECKED - SUN	REVISOR -

STATE OF ILLINOIS  
DEPARTMENT OF TRANSPORTATION

DETAIL EXISTING STEEL RAILING  
FOR INFORMATIONAL ONLY

SHEET NO. 13 OF 20 SHEETS

F.A.P. RTE.	SECTION	COUNTY	TOTAL SHEETS	SHEET NO.
68	(52)I	LASALLE	8	8
CONTRACT NO. 66B08				
ILLINOIS FED. AID PROJECT				