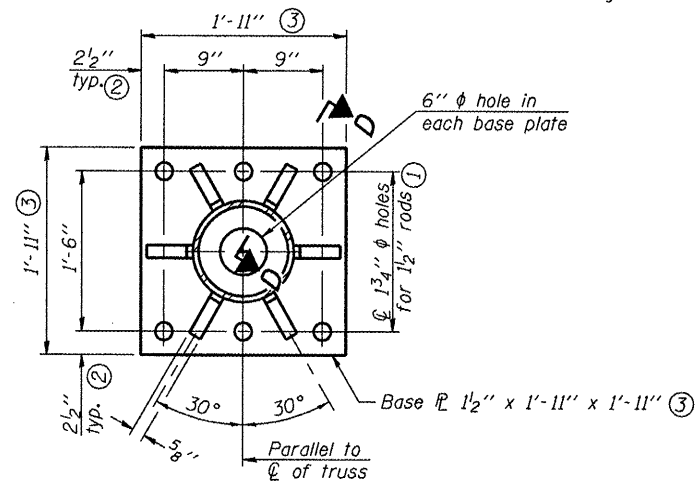
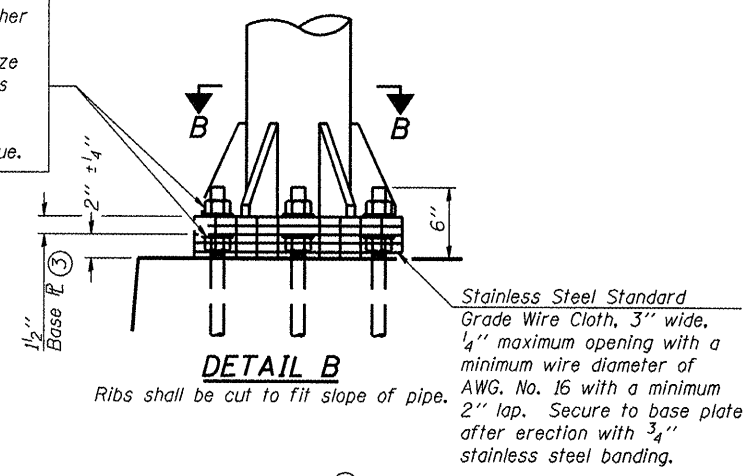
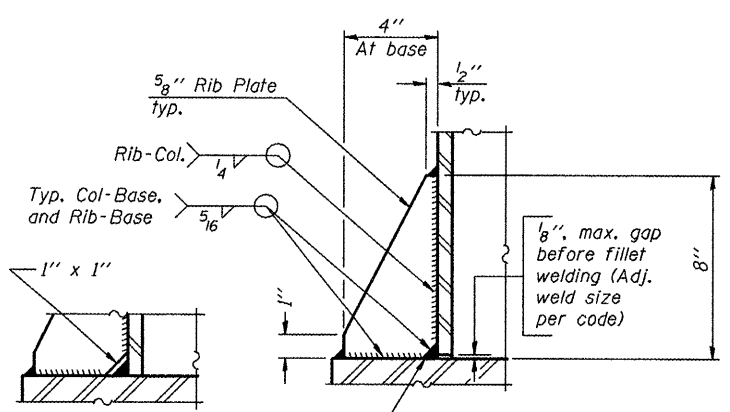


Hexagon locknut and washer (top), leveling nut and washer (bottom). Galvanize per AASHTO M232. Nuts shall each be tightened against base plate with 200 lb.-ft. minimum torque.

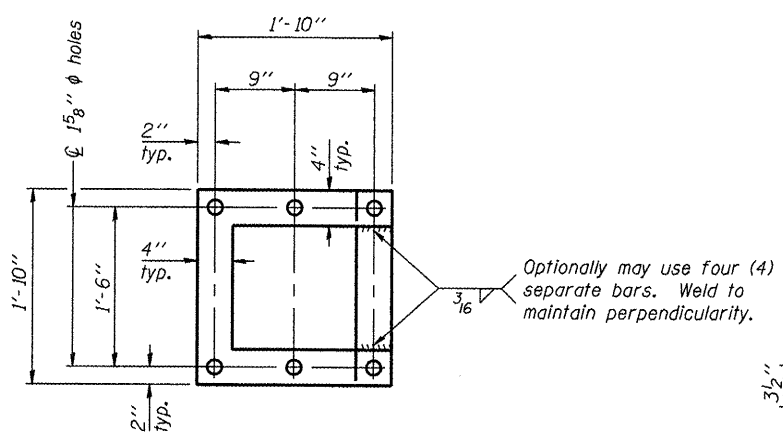


SECTION B-B

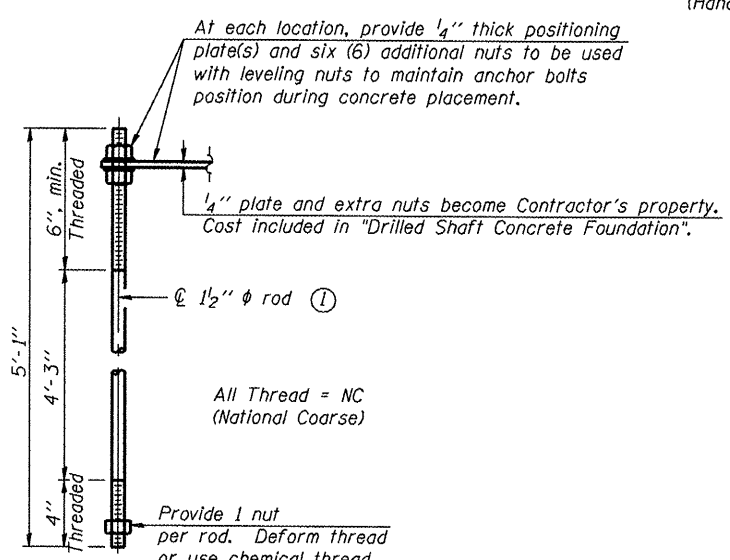


SECTION D-D

** Alternate detail if welding col. to base plate first, then snip inside corner of ribs. Terminate weld on rib 1/4 inch from snip.



POSITIONING PLATE(S)



ANCHOR ROD DETAIL

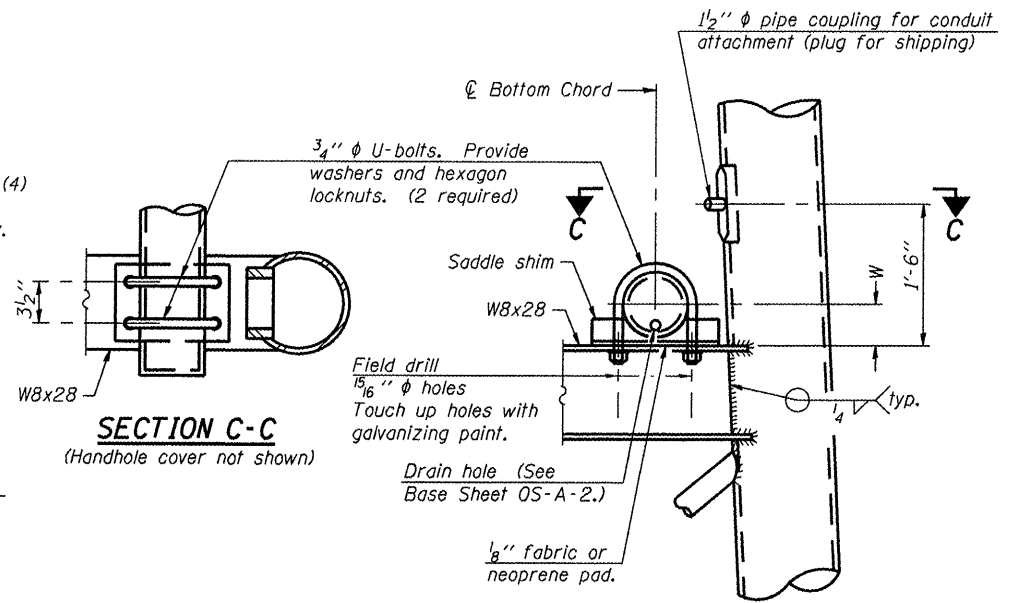
Anchor rods shall conform to ASTM F1554 Grade 105 Galvanize upper 12 inch minimum per AASHTO M232. No welding shall be permitted on rods.

TYPE III-A TRUSS

12" Ø PIPE SUPPORT FRAME DETAILS

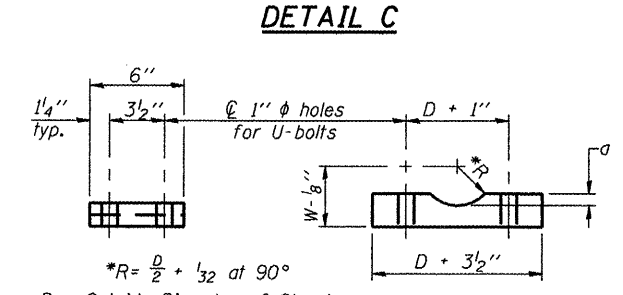
Notes:
For Type III-A Truss spans greater than 150 ft. and up to 160 ft.:

- ① 1 3/4" Ø rod, 2" Ø holes
- ② 2 3/4" edge distance
- ③ Base plate 1 5/8" x 1'-11 1/2" x 1'-11 1/2"



SECTION C-C

(Handhole cover not shown)



SADDLE SHIM DETAIL

ASTM B26 Alloy 356-F
or
ASTM B209 Alloy 6061-T651
(4 required per sign truss)

Truss Chord Nominal Dia.	a
7"	1"
8 1/2"	1 1/4"
9"	1 3/8"

OS4-A-80a

1-20-11

FILE NAME =	USER NAME = pateluj	DESIGNED -	REVISED -
c:\pwwork\puidot\pateluj\d0250292\036828-sht-details.DGN		DRAWN -	REVISED -
PLOT SCALE = 99.9999 1/16 in.		CHECKED -	REVISED -
PLOT DATE = 2/23/2012		DATE -	REVISED -

**STATE OF ILLINOIS
DEPARTMENT OF TRANSPORTATION**

**OVERHEAD SIGN STRUCTURES
SUPPORT FRAME FOR TYPE III-A ALUMINUM TRUSS**

SCALE: _____ SHEET NO. 1 OF 1 SHEETS STA. _____ TO STA. _____

F.A.I. RTE. VAR	SECTION D3 OVD MESSAGE SG - 2012	COUNTY VAR	TOTAL SHEETS 50	SHEET 19
			CONTRACT NO. 66B28	
[ILLINOIS]				