

STATE OF ILLINOIS
DEPARTMENT OF TRANSPORTATION
DIVISION OF HIGHWAYS

**PROPOSED
HIGHWAY PLANS**

**FAI ROUTE 55 (I-55)
SECTION D3 INTERMITTENT RS 2012-1
PROJECT: IM-055-5(111)195
INTERMITTENT MILL & RESURFACING
AROUND PONTIAC
LIVINGSTON COUNTY**

C-93-068-12

F.A.I. RTE.	SECTION	COUNTY	TOTAL SHEETS	SHEET NO.
55	D3 INTERMITTENT RS 2012-1	LIVINGSTON	8	1
		ILLINOIS	CONTRACT NO. 66B96	

INDEX OF SHEETS

- 1 COVER SHEET & STANDARDS
- 2 GENERAL NOTES
- 3-4 SUMMARY OF QUANTITIES
- 5 TYPICAL SECTION
- 6 SCHEDULE OF QUANTITIES
- 7-8 DETAILS

LIST OF ILLINOIS DOT HIGHWAY STANDARDS

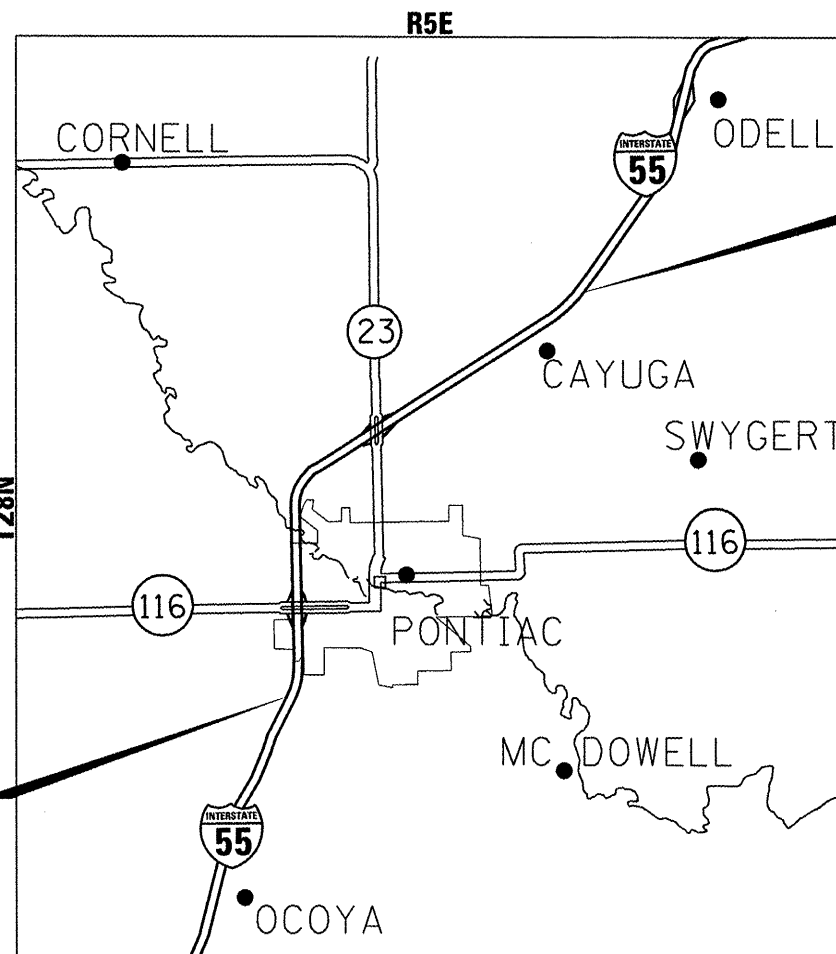
- 000001-06 STANDARD SYMBOLS, ABBREVIATIONS AND PATTERNS
- 442001-04 CLASS A PATCHES
- 701400-05 APPROACH TO LANE CLOSURE, FREEWAY/EXPRESSWAY
- 701401-06 LANE CLOSURE, FREEWAY/EXPRESSWAY
- 701411-08 LANE CLOSURE, MULTILANE, AT ENTRANCE OR EXIT RAMP FOR SPEEDS ≥ 45 MPH
- 701426-04 LANE CLOSURE, MULTILANE INTERMITTENT OR MOVING OPERATION, FOR SPEEDS ≥ 45 MPH
- 701901-02 TRAFFIC CONTROL DEVICES
- 780001-03 TYPICAL PAVEMENT MARKINGS
- 781001-03 TYPICAL APPLICATIONS RAISED REFLECTIVE PAVEMENT MARKERS

MICROFILMED _____
REEL NUMBER _____
AWARDED _____
RESIDENT ENGINEER _____
AS BUILT CHANGES WERE MADE
ON THE FOLLOWING SHEETS _____

J.U.L.I.E.
JOINT UTILITY LOCATION INFORMATION FOR EXCAVATION
1-800-892-0123
OR 811

PROJECT ENGINEER: CRAIG REED, P.E.
UNIT CHIEF: BRAD DUNCAN, P.E.

CONTRACT NO. 66B96

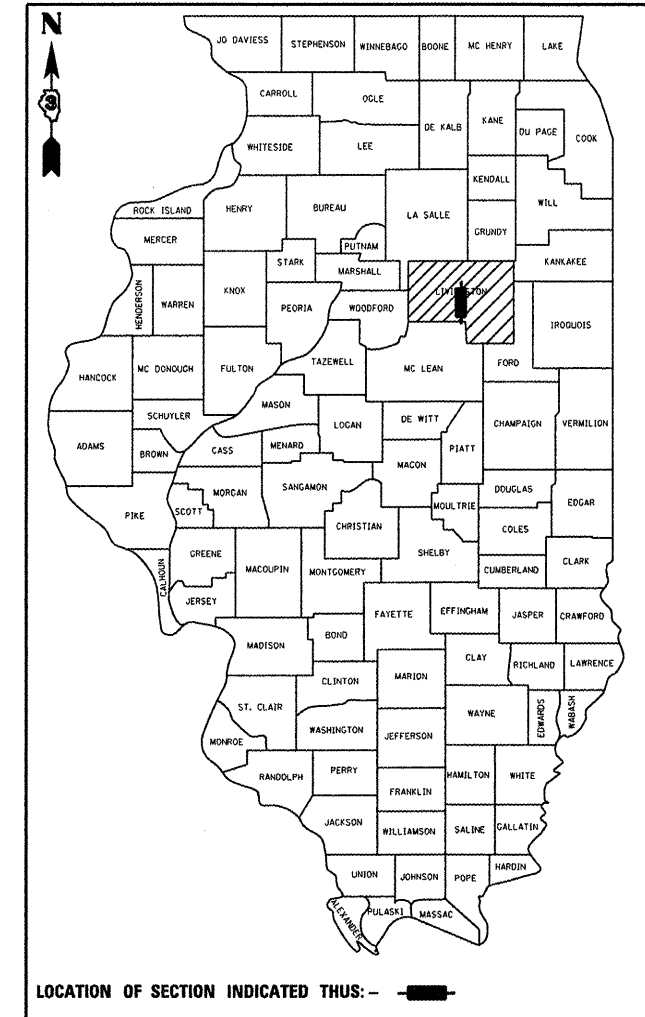


**BEGIN IMPROVEMENT
MM 195**

**END IMPROVEMENT
MM 205**

GROSS LENGTH = 10.0 MILE

D-93-038-12



INTERSTATE (URBAN)
2009 ADT = 20000
PV = 73.4% SU = 2.8% MU = 23.8%

STATE OF ILLINOIS
DEPARTMENT OF TRANSPORTATION
DIVISION OF HIGHWAYS

SUBMITTED February 8 20 12
Eric S. Therkildsen
DEPUTY DIRECTOR OF HIGHWAYS, REGION ENGINEER

March 23 20 12
John D. Baranzelli, P.E.
ENGINEER OF DESIGN AND ENVIRONMENT

March 23 20 12
William R. Frey, Jr.
DIRECTOR OF HIGHWAYS, CHIEF ENGINEER

PRINTED BY THE AUTHORITY
OF THE STATE OF ILLINOIS

GENERAL NOTES

THE THICKNESS OF HMA SHOWN ON THE PLANS IS THE NOMINAL THICKNESS. DEVIATIONS FROM THE NOMINAL THICKNESS WILL BE PERMITTED WHEN SUCH DEVIATIONS OCCUR DUE TO IRREGULARITIES IN THE EXISTING SURFACE OR BASE ON WHICH THE HMA IS PLACED.

THE ENGINEER WILL BE THE SOLE JUDGE CONCERNING CURING TIME FOR THE VARIOUS HMA LIFTS.

ON EXISTING PAVEMENT WHICH MAY BE SUPERELEVATED, THE NEW HMA PAVEMENT SHALL BE BUILT WITH THE SAME SUPERELEVATION UNLESS NEW SUPERELEVATION RATES ARE GIVEN ON THE PLANS.

ANY REFERENCE TO A STANDARD IN THESE PLANS SHALL BE INTERPRETED TO MEAN THE EDITION AS INDICATED BY THE SUBNUMBER SHOWN IN THE LIST OF STANDARDS OR THE COPY INCLUDED IN THESE PLANS.

THE FOLLOWING RATES OF APPLICATION HAVE BEEN USED IN CALCULATING PLAN QUANTITIES:

GRANULAR MATERIALS	2.05	TONS / CU YD
AGGREGATE (PRIME COAT)	0.002	TONS / SQ YD
HMA RESURFACING	112	LBS / SQ YD / IN
SHORT TERM PAVEMENT MARKING	10	FT / 100 FT OF APPLICATION
MIX FOR CRACKS, JTS & FLGWYS	0.0003	TONS / SQ YD
LEVEL BINDER (HAND METHOD)	0.0005	TONS / SQ YD
SUPPLEMENTAL WATERING	3	GAL / SQ YD / APPLICATION
CALCIUM CHLORIDE	2	LB / SQ YD / APPLICATION
AGGREGATE DITCH CHECKS	5	TONS AGGREGATE

BITUMINOUS MATERIALS (PRIME COAT) RATES		
SURFACE TYPE	ESTIMATED TRUCK APPLICATION RATE	RESIDUAL RATE
AGGREGATE BASES	0.375 GAL / SQ YD	N/A
MILLED HMA OR PCC PAVEMENT	0.08 GAL / SQ YD	0.04 GAL / SQ YD
EXISTING PAVEMENT	0.05 GAL / SQ YD	0.025 GAL / SQ YD
FOG COAT (BETWEEN ADDITIONAL HMA LIFTS)	0.05 GAL / SQ YD	0.025 GAL / SQ YD

ESTIMATED TRUCK APPLICATION RATE USED FOR CALCULATING PLAN QUANTITIES

STATE OF ILLINOIS
DEPARTMENT OF TRANSPORTATION
DISTRICT THREE

PREPARED BY: *Don Blouin*
DISTRICT STUDIES & PLANS ENGINEER

DATE: 2-8-12

EXAMINED BY: *Herbert D. Gung*
DISTRICT CONSTRUCTION ENGINEER

Ray J. Kelly
DISTRICT MATERIALS ENGINEER

Bruce A. Wacker
DISTRICT OPERATIONS ENGINEER

FILE NAME =	USER NAME = duncanbd	DESIGNED -	REVISED -	STATE OF ILLINOIS DEPARTMENT OF TRANSPORTATION	GENERAL NOTES	F.A.I. RTE.	SECTION	COUNTY	TOTAL SHEETS	SHEET NO.
ca\pwwork\pwwork\duncanbd\0292276\0368896-shr-cover.dgn	DRAWN -	REVISED -	55			D3 INTERMITTENT RS 2012-	LIVINGSTON	8	2	
PLOT SCALE = 100,0000' / in.	CHECKED -	REVISED -	CONTRACT NO. 66B96							
PLOT DATE = 2/7/2012	DATE -	REVISED -	SCALE:			SHEET NO.	OF SHEETS	STA.	TO STA.	ILLINOIS FED. AID PROJECT

CODE NO.	ITEM	UNIT	TOTAL QUANTITY	CONSTR. CODE
				90% FED 10% STATE ROADWAY 0005 URBAN
40600100	BITUMINOUS MATERIALS (PRIME COAT)	GALLON	8892	8892
40600400	MIXTURE FOR CRACKS, JOINTS, AND FLANGEWAYS	TON	20	20
40600895	CONSTRUCTING TEST STRIP	EACH	1	1
40600990	TEMPORARY RAMP	SQ YD	31	31
40603545	POLYMERIZED HOT-MIX ASPHALT SURFACE COURSE, MIX "D", N90	TON	12370	12370
44200541	CLASS A PATCHES, TYPE II, 9 INCH	SQ YD	200	200
44200547	CLASS A PATCHES, TYPE IV, 9 INCH	SQ YD	178	178
44213000	PATCHING REINFORCEMENT	SQ YD	378	378
44213200	SAW CUTS	FOOT	2166	2166
48203100	HOT-MIX ASPHALT SHOULDERS	TON	127	127
67100100	MOBILIZATION	L SUM	1	1
70100420	TRAFFIC CONTROL AND PROTECTION, STANDARD 701411	EACH	4	4
70103815	TRAFFIC CONTROL SURVEILLANCE	CAL DA	10	10
70106800	CHANGEABLE MESSAGE SIGN	CAL MO	4	4

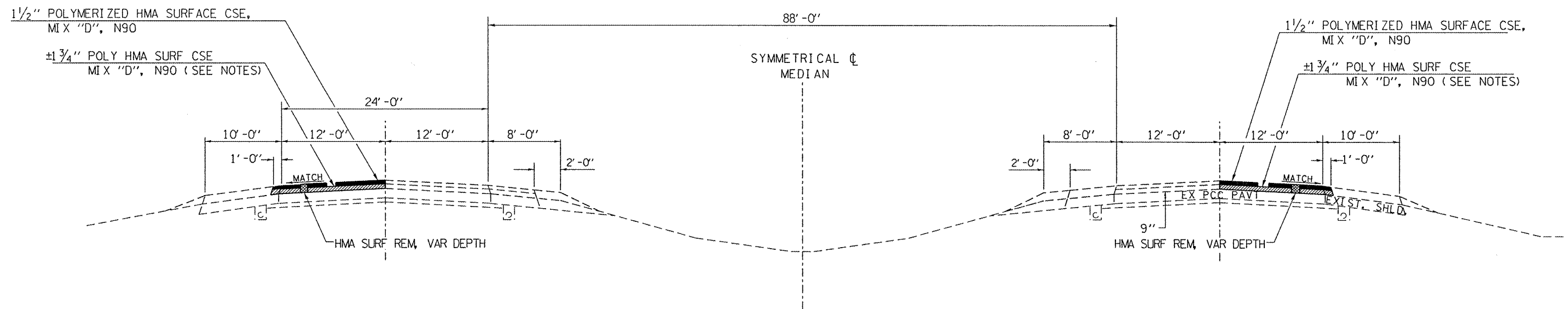
△ SPECIALTY ITEMS

FILE NAME =	USER NAME = duncanbd	DESIGNED -	REVISED -	STATE OF ILLINOIS DEPARTMENT OF TRANSPORTATION	SUMMARY OF QUANTITIES				F.A.I. RTE.	SECTION	COUNTY	TOTAL SHEETS	SHEET NO.	
et\pwwork\pwwork\duncanbd\0292276\0366896-sht-500.dgn		DRAWN -	REVISED -		SCALE:	SHEET NO.	OF	SHEETS	STA.	TO STA.	55	D3 INTERMITTENT RS 2012-1	LIVINGSTON	8 3
PLOT SCALE = 100.0000' / 1"		CHECKED -	REVISED -								CONTRACT NO. 66B96			
PLOT DATE = 2/9/2012		DATE -	REVISED -								ILLINOIS FED. AID PROJECT			

CODE NO.	ITEM	UNIT	TOTAL QUANTITY	CONSTR. CODE	
				90% FED 10% STATE ROADWAY 0005 URBAN	
70300100	SHORT TERM PAVEMENT MARKING	FOOT	1882	1882	
70301000	WORK ZONE PAVEMENT MARKING REMOVAL	SO FT	621	621	
△ 78009004	MODIFIED URETHANE PAVEMENT MARKING - LINE 4"	FOOT	43880	43880	
△ 78009008	MODIFIED URETHANE PAVEMENT MARKING - LINE 8"	FOOT	1751	1751	
△ 78100100	RAISED REFLECTIVE PAVEMENT MARKER	EACH	30	30	
78300200	RAISED REFLECTIVE PAVEMENT MARKER REMOVAL	EACH	30	30	
X0326880	MESSAGE BOARD VEHICLE DRIVER	HOUR	160	160	
X0326907	PORTABLE, VEHICLE MOUNTED, CHANGEABLE MESSAGE SIGN	CAL MO	2	2	
X4401198	HOT-MIX ASPHALT SURFACE REMOVAL, VARIABLE DEPTH	SO YD	68670	68670	
X7010805	TRAFFIC CONTROL AND PROTECTION, STANDARD 701401 (SPECIAL)	L SUM	1	1	
△ X7830070	GROOVING FOR RECESSED PAVEMENT MARKING 5"	FOOT	43880	43880	
△ X7830076	GROOVING FOR RECESSED PAVEMENT MARKING 9"	FOOT	1751	1751	
Z0034105	MATERIAL TRANSFER DEVICE	TON	12370	12370	

△ SPECIALTY ITEMS

FILE NAME =	USER NAME = duncanbd	DESIGNED -	REVISED -	STATE OF ILLINOIS DEPARTMENT OF TRANSPORTATION	SUMMARY OF QUANTITIES			F.A.I. RTE.	SECTION	COUNTY	TOTAL SHEETS	SHEET NO.
c:\pwwork\pwwork\duncanbd\0292276\036896-shr-500.dgn		DRAWN -	REVISED -					55	D3 INTERMITTENT RS 2012-1	LIVINGSTON	8	4
PLOT SCALE = 100.0000' / 1"		CHECKED -	REVISED -		SCALE: SHEET NO. OF SHEETS STA. TO STA.			CONTRACT NO. 66B96				
PLOT DATE = 2/9/2012		DATE -	REVISED -		ILLINOIS FED. AID PROJECT							



NOTES:

EXISTING HMA THICKNESS VARIES FROM 2.75" TO 3.5".
 AVERAGE HMA REMOVAL ASSUMED TO BE APPROXIMATELY 3.25".
 PROPOSED SURFACE SHALL BE PLACED IN 2 LIFTS. ALLOWING
 1.5" FOR THE TOP LIFT.

TYPICAL SECTION

SEE SCHEDULE FOR MILLING & RESURFACING LOCATIONS

MIXTURES TABLE

	POLY HMA SURFACE	HMA SHOULDERS SHOULDER REPAIR
PG GRADE	SBS-PG70-22	PG64-22
DESIGN AIR	4.0% @	2.0% @
VOIDS	N90	N30
MIXTURE COMPOSITION	IL 9.5	IL 19.0
FRICTION		
AGGREGATE	MIXTURE D	
DENSITY TEST METHOD	CORES/ CORRELATION	SATISFACTION OF ENGINEER

FILE NAME =	USER NAME = duncanbd	DESIGNED -	REVISED -
c:\pwwork\prios\duncanbd\0292276\03	****-shl-typical.dgn	DRAWN -	REVISED -
	PLOT SCALE = 100.0000' / 1"	CHECKED -	REVISED -
	PLOT DATE = 2/9/2012	DATE -	REVISED -

**STATE OF ILLINOIS
 DEPARTMENT OF TRANSPORTATION**

TYPICAL SECTION	
SCALE:	SHEET OF SHEETS STA. TO STA.

F.A.I. RTE.	SECTION	COUNTY	TOTAL SHEETS	SHEET NO.
55	03 INTERMITTENT RS 2012-1	LIVINGSTON	8	5
CONTRACT NO. 66B96			ILLINOIS FED. AID PROJECT	

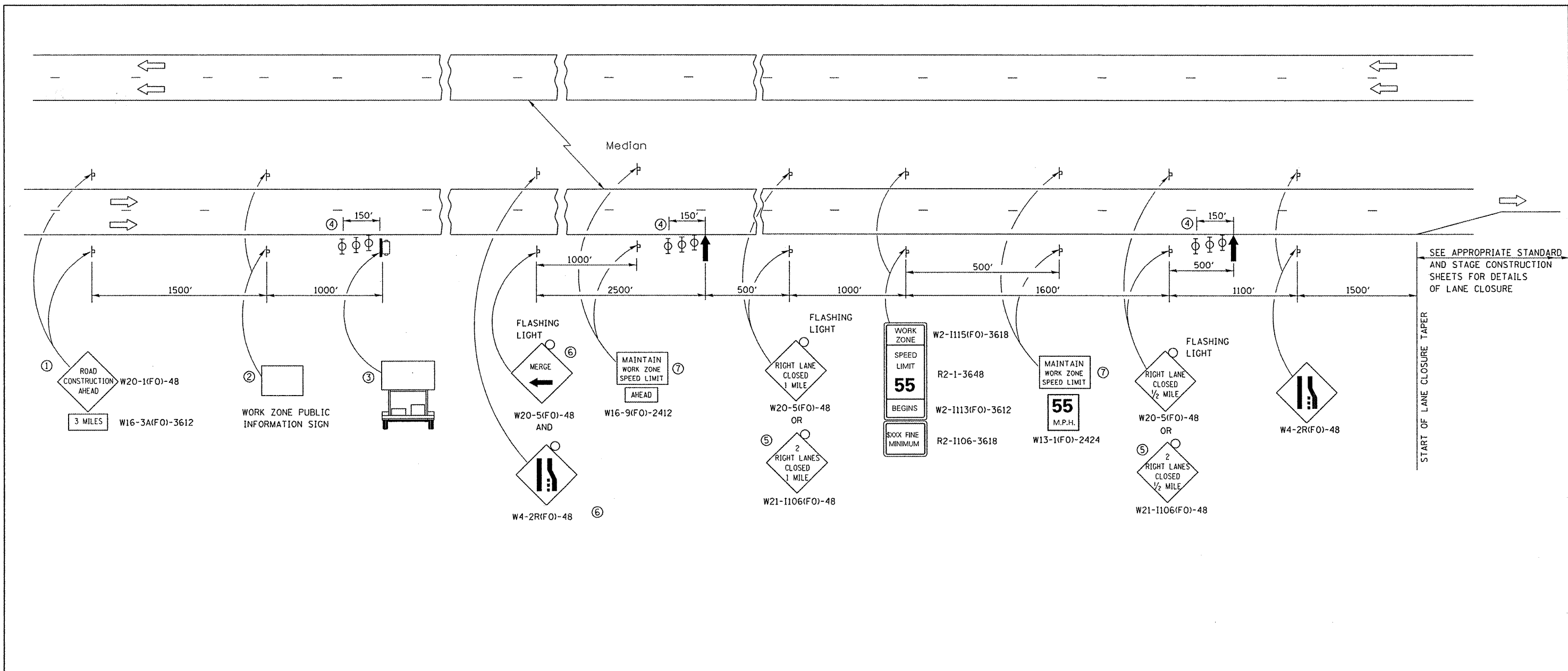
MAINLINE							
LOCATIONS MILE MARKERS	LENGTH	HMA SURF		MIX FOR JTS	BIT MAT	POLY HMA SURF	COMMENTS
		REM	VAR DEPTH	CRKS & FLANG	PRIME COAT	CSE "D", N90	
		SQ YD		TON	GALLON	TON	
SOUTHBOUND DRIVING LANE							
197.5 - 201.5	20656	29836		9.0	3879	5430	SN 053-0128 OMISSION
203.4 - 204.7	6864	9915		3.0	1289	1804	
NORTHBOUND DRIVING LANE							
195 - 196.7	8976	12965		3.9	1685	2360	
198.8 - 200.8	10560	15253		4.6	1983	2776	
TOTALS	47056	67970		20	8836	12370	

PAVEMENT MARKING									
LOCATIONS MILE MARKERS	LENGTH	URETHANE		GROOVE FOR	GROOVE FOR	RAISED REFL	RAISED REFL	SHORT TERM	WORK ZONE
		LINE 4"	LINE 8"	REC PAVT MARK 5"	REC PAVT MARK 9"	PAVT MARK	PAVT MARK REM	PAVT MARK	PAVT MARK REM
		FOOT	FOOT	FOOT	FOOT	EACH	EACH	FOOT	SQ FT
SOUTHBOUND DRIVING LANE									
197.5 - 201.5	18804	18804	877	18804	877	9	9	826	272.6
203.4-204.7	6864	6864		6864				275	90.8
NORTHBOUND DRIVING LANE									
195 - 196.7	8334	8334	417	8334	417	9	9	359	118.5
198.8 - 200.8	9878	9878	457	9878	457	12	12	422	139.3
TOTALS	43880	43880	1751	43880	1751	30	30	1882	621

CLASS A PATCHING							
LOCATION MILE MARKERS	NO. OF PATCHES	SOUTHBOUND DRIVING LANE					
		LENGTH	WIDTH	TY II	TY IV	PATCH	SAW
		FOOT	FOOT	SQ YD	SQ YD	REINF. SQ YD	CUTS FOOT
197.5 - 201.5							
TYPE II	12	6	12	96.0		96.0	744
TYPE IV	4	19	12		101.2	101.2	352
203.4 - 204.7							
TYPE II	3	6	12	24.0		24.0	186
TYPE IV	1	19	12		25.3	25.3	88
TOTALS				120	127	247	1370

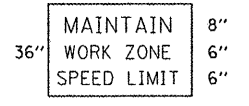
CLASS A PATCHING							
LOCATION MILE MARKERS	NO. OF PATCHES	NORTHBOUND DRIVING LANE					
		LENGTH	WIDTH	TY II	TY IV	PATCH	SAW
		FOOT	FOOT	SQ YD	SQ YD	REINF. SQ YD	CUTS FOOT
195 - 196.7							
TYPE II	5	6	12	40.0		40.0	310
TYPE IV	1	19	12		25.3	25.3	88
198.8 - 200.8							
TYPE II	5	6	12	40.0		40.0	310
TYPE IV	1	19	12		25.3	25.3	88
TOTALS				80	51	131	796

SHOULDER REPAIR			
LOCATIONS MILE MARKERS	HMA SURF VAR DEPTH	BIT MAT PRIME COAT	HMA SHLDS
	SQ YD	GALLON	TON
VARIOUS LOCATIONS			
195 - 205	700	56	127
TOTALS	700	56	127



- ① THE ROAD CONSTRUCTION AHEAD SIGN SHALL BE LOCATED 3 MILES IN ADVANCE OF THE PROJECT LIMITS.
- ② THE MESSAGE AND SIZE OF THE WORK ZONE PUBLIC INFORMATION SIGN SHALL BE AS SPECIFIED BY THE DEPARTMENT.
- ③ TO BE PLACED IN THE MEDIAN WHEN FEASIBLE. THE MESSAGE BOARD SHALL BE USED TO DISPLAY STATUS OF LANES WITHIN THE PROJECT. THE PRIMARY MESSAGES SHALL BE:
"RIGHT LANE CLOSED" / " x MILES AHEAD"
"LEFT LANE CLOSED" / " x MILES AHEAD"
"ALL LANES OPEN"
- ④ THREE, TYPE II BARRICADES, DRUMS, OR VERTICAL BARRICADES AT 50' CENTERS.
- ⑤ THIS SIGN SHALL BE USED WHEN 2 LANES ARE CLOSED.
- ⑥ WHEN THE LEFT LANE IS CLOSED, SWITCH THESE TWO SIGNS AND THE DIRECTION OF THE MERGE ARROW.

⑦ 48"x36" FLUORESCENT ORANGE SIGN WITH BLACK LETTERS, 48"



- ↑ ARROW BOARD
- ▮ PORTABLE CHANGEABLE MESSAGE SIGN
- ⊥ SIGN
- ⊕ TYPE II BARRICADE, DRUM, OR VERTICAL BARRICADE WITH MONODIRECTIONAL FLASHING LIGHT

GENERAL NOTE:

THIS STANDARD IS USED WHERE AT ANY TIME A LANE IS CLOSED ON A FREEWAY/EXPRESSWAY.

WHEN THE LEFT LANE IS CLOSED, LEFT LANE CLOSED SIGNS SHALL BE SUBSTITUTED FOR THE RIGHT LANE CLOSED SIGNS.

THE FIRST TWO SIGNS AND THE MESSAGE BOARD ARE STATIONARY. THE OTHER SIGNS AND ARROWBOARDS SHALL BE MOVED AS NECESSARY TO MAINTAIN THE REQUIRED DISTANCE FROM THE START OF THE LANE CLOSURE TAPER(S).

SEE SPECIAL PROVISIONS.

ALL DIMENSIONS ARE IN INCHES UNLESS OTHERWISE SHOWN.

FILE NAME =	USER NAME = duncambd	DESIGNED -	REVISED -
e:\pwwork\pwwork\duncambd\0292276\0366896-sht-details.dgn		DRAWN -	REVISED -
PLOT SCALE = 100.0000' / in.		CHECKED -	REVISED -
PLOT DATE = 2/9/2012		DATE -	REVISED -

**STATE OF ILLINOIS
DEPARTMENT OF TRANSPORTATION**

STANDARD 701400 (SPECIAL)			
SCALE:	SHEET NO. OF SHEETS	STA.	TO STA.

F.A.I. RTE.	SECTION	COUNTY	TOTAL SHEETS	SHEET NO.
55	03 INTERMITTENT RS 2012-1	LIVINGSTON	8	8
ILLINOIS FED. AID PROJECT			CONTRACT NO. 66B96	