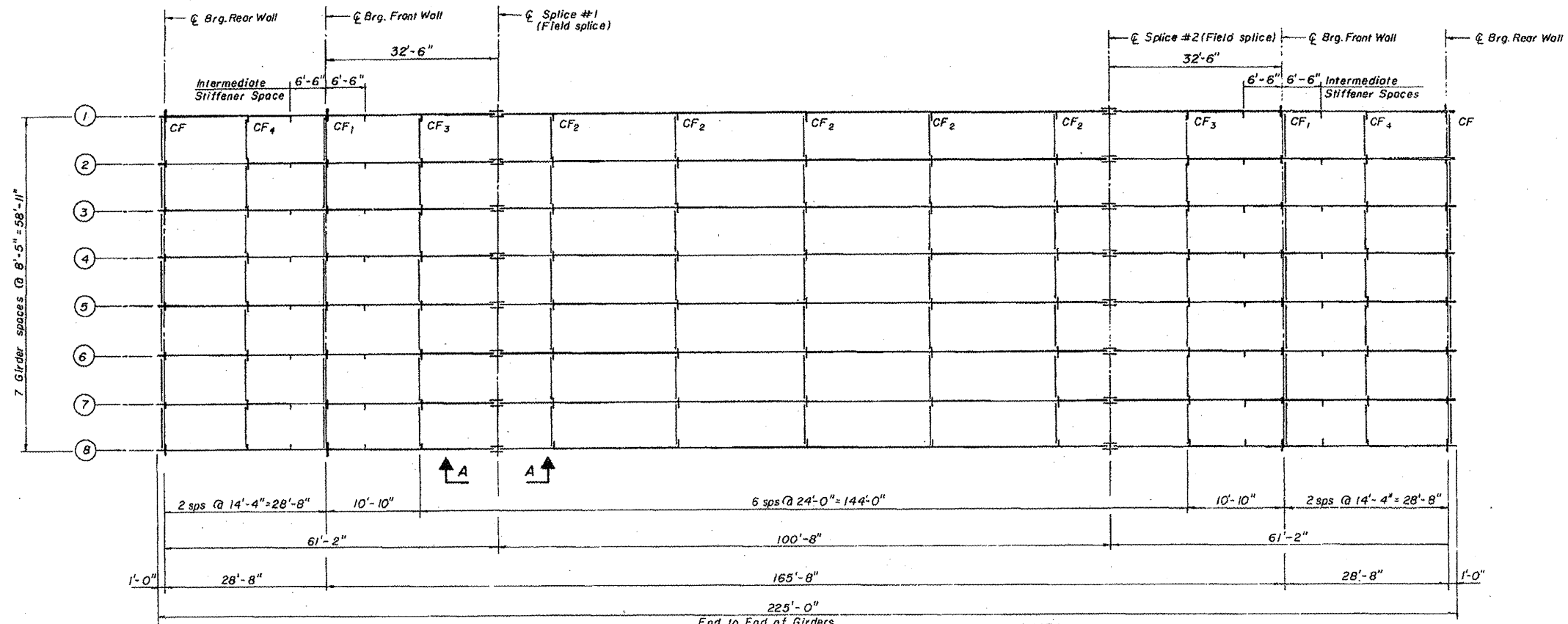
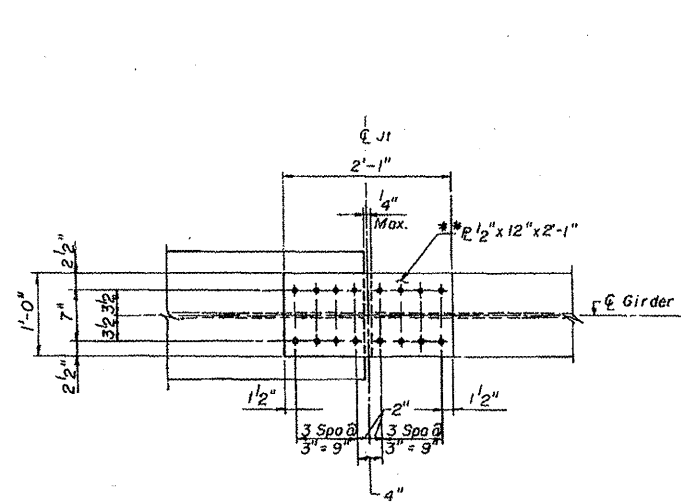


S.N. 102-0047 LOCATION 1 INFORMATION ONLY

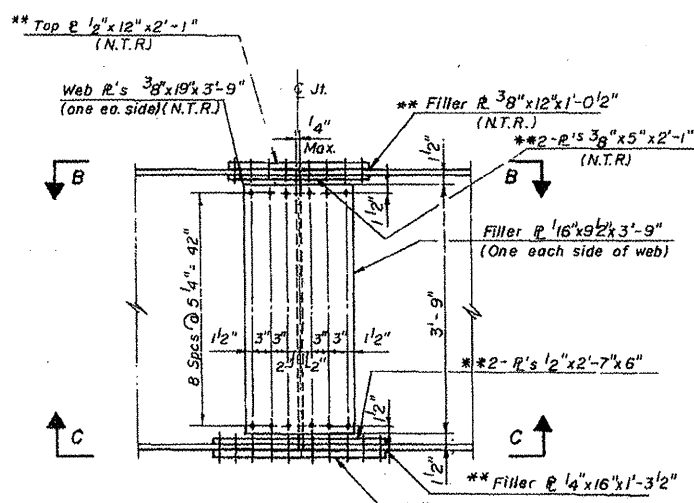


FRAMING PLAN
Scale: $\frac{3}{32}'' = 1'-0''$

NOTE: Core must be exercised for properly bracing the 12" top flange during shipping and erection before the cross frames are installed.



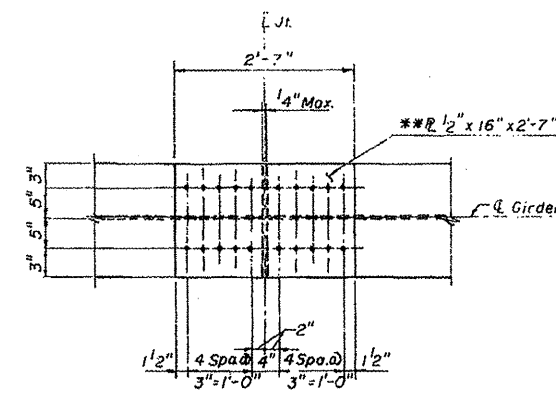
SECTION B-B



SECTION - A-A

N.T.R. = Notch Toughness Req'd.
* * Indicates M-223 Gr. 50 Steel

FIELD SPLICE DETAILS
N.T.S.



SECTION C-C

NOTE: All bolts for field splices are $\frac{7}{8}''$ H. S. bolts. Open holes shall be $1\frac{5}{16}''$ (Typ.)

FILE NAME = April 2012 printing.dgn

USER NAME = AdedeSA

DESIGNED -

REVISED -

DRAWN -

REVISED -

PLOT SCALE = 2.0198' / in.

CHECKED -

REVISED -

PLOT DATE = 2/11/2012

DATE -

REVISED -

STATE OF ILLINOIS
DEPARTMENT OF TRANSPORTATION

SCALE: SHEET OF SHEETS STA. TO STA.

| F.A.I. RTE. | SECTION | COUNTY | TOTAL SHEETS | SHEET NO. |
|---------------------------|-----------------|----------|--------------|-----------|
| 39 | 102-[4HB,3HB-2] | WOODFORD | 12 | 5 |
| CONTRACT NO. 68A94 | | | | |
| ILLINOIS FED. AID PROJECT | | | | |