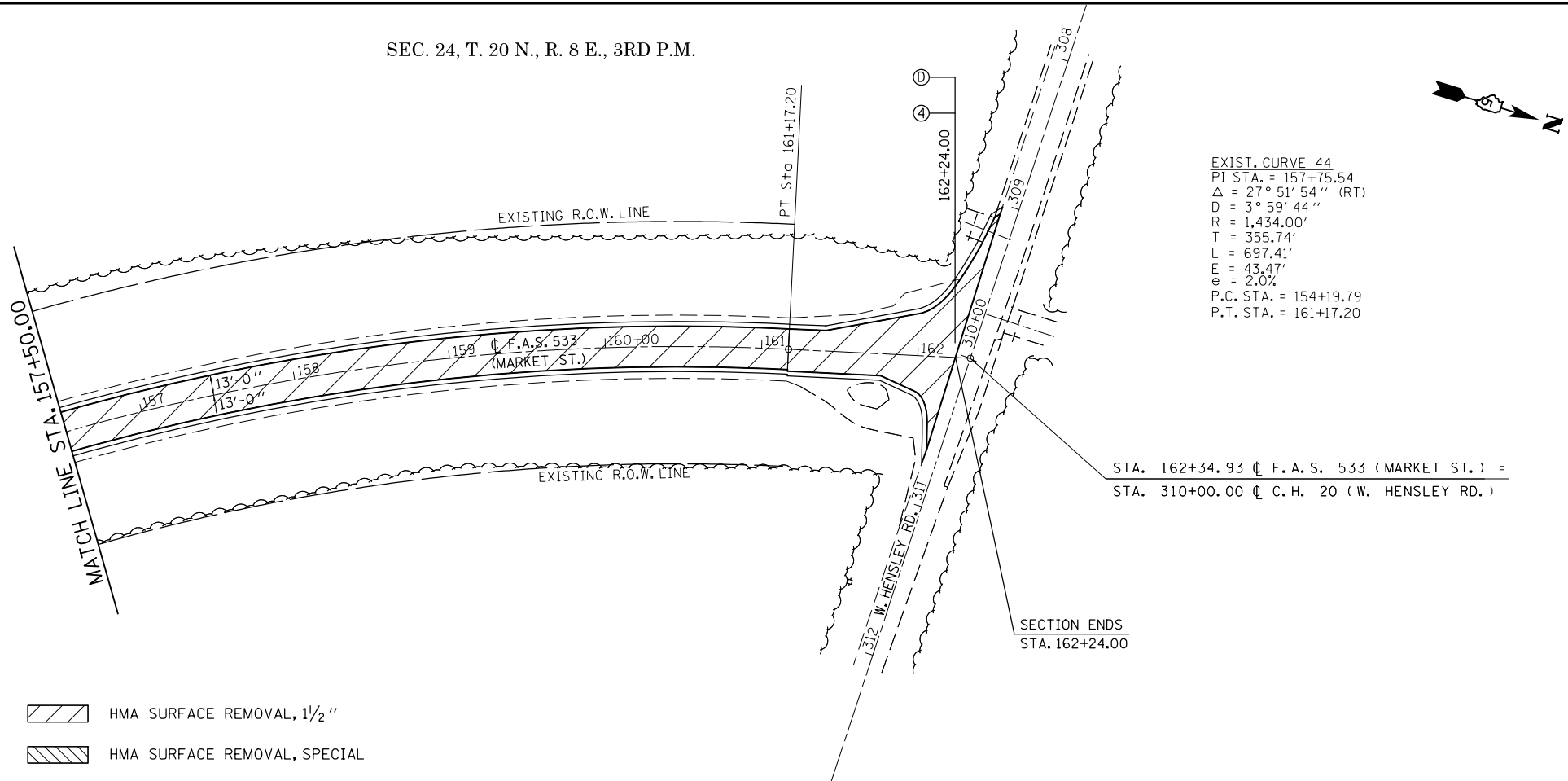


SEC. 24, T. 20 N., R. 8 E., 3RD P.M.



EXIST. CURVE 44  
 PI STA. = 157+75.54  
 $\Delta = 27^\circ 51' 54''$  (RT)  
 $D = 3^\circ 59' 44''$   
 $R = 1,434.00'$   
 $T = 355.74'$   
 $L = 697.41'$   
 $E = 43.47'$   
 $e = 2.0\%$   
 P.C. STA. = 154+19.79  
 P.T. STA. = 161+17.20

STA. 162+34.93  $\text{C.F.A.S. 533 (MARKET ST.)}$  =  
 STA. 310+00.00  $\text{C.H. 20 (W. HENSLEY RD.)}$

- HMA SURFACE REMOVAL, 1/2"
- HMA SURFACE REMOVAL, SPECIAL

FILE NAME =	USER NAME = ppersonbr	DESIGNED -	REVISED -
ct:\pw\work\p\pidot\ppersonbr\d0249274\0570874-sh1-pln.dgn		DRAWN -	REVISED -
	PLOT SCALE = 100.0000' / in.	CHECKED -	REVISED -
	PLOT DATE = 1/27/2012	DATE -	REVISED -

**STATE OF ILLINOIS  
 DEPARTMENT OF TRANSPORTATION**

**PLAN SHEETS**

SCALE: 1" = 50'      SHEET NO. 3 OF 3 SHEETS      STA. 157+50.00 TO STA. 162+34.93

F.A.S. RTE.	SECTION	COUNTY	TOTAL SHEETS	SHEET NO.
533	(10-34,HB-5,106)RS-1	CHAMPAIGN	26	16
				<b>CONTRACT NO. 70874</b>
ILLINOIS FED. AID PROJECT				