

STATE OF ILLINOIS
DEPARTMENT OF TRANSPORTATION
DIVISION OF HIGHWAYS
PROPOSED
HIGHWAY PLANS

F.A.S. RTE.	SECTION	COUNTY	TOTAL SHEETS	SHEET NO.
533	(10-34,HB-5,106)RS-1	CHAMPAIGN	26	1
		ILLINOIS	CONTRACT NO. 70874	

FOR INDEX OF SHEETS, SEE SHEET NO. 2
 FOR SUMMARY OF QUANTITIES, SEE SHEET NO. 4

CURRENT TRAFFIC DATA

F.A.S. ROUTE 533 / (MARKET STREET)

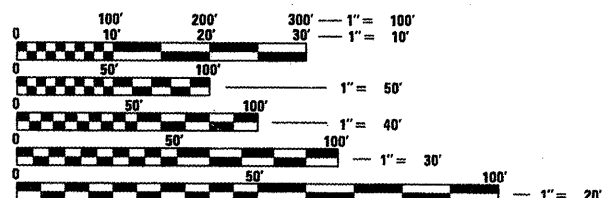
	ADT (2010)	PV %	SU%	MU%
LEG "A" =	950	90.3	6.7	3.0
LEG "B" =	6,000	76.7	8.0	15.3
LEG "C" =	5,600	93.3	3.1	3.6

TRAFFIC DATA LOCATIONS

LEG "A" = W. HENSLEY ROAD TO I-57 SB RAMPS
 LEG "B" = I-57 NB RAMPS TO LEVERETT ROAD
 LEG "C" = LEVERETT ROAD TO W. FORD HARRIS ROAD

DESIGN DESIGNATION

MAJOR COLLECTOR (RURAL)



FULL SIZE PLANS HAVE BEEN PREPARED USING STANDARD ENGINEERING SCALES. REDUCED SIZED PLANS WILL NOT CONFORM TO STANDARD SCALES. IN MAKING MEASUREMENTS ON REDUCED PLANS, THE ABOVE SCALES MAY BE USED.

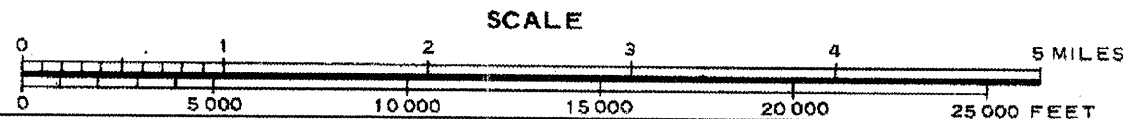
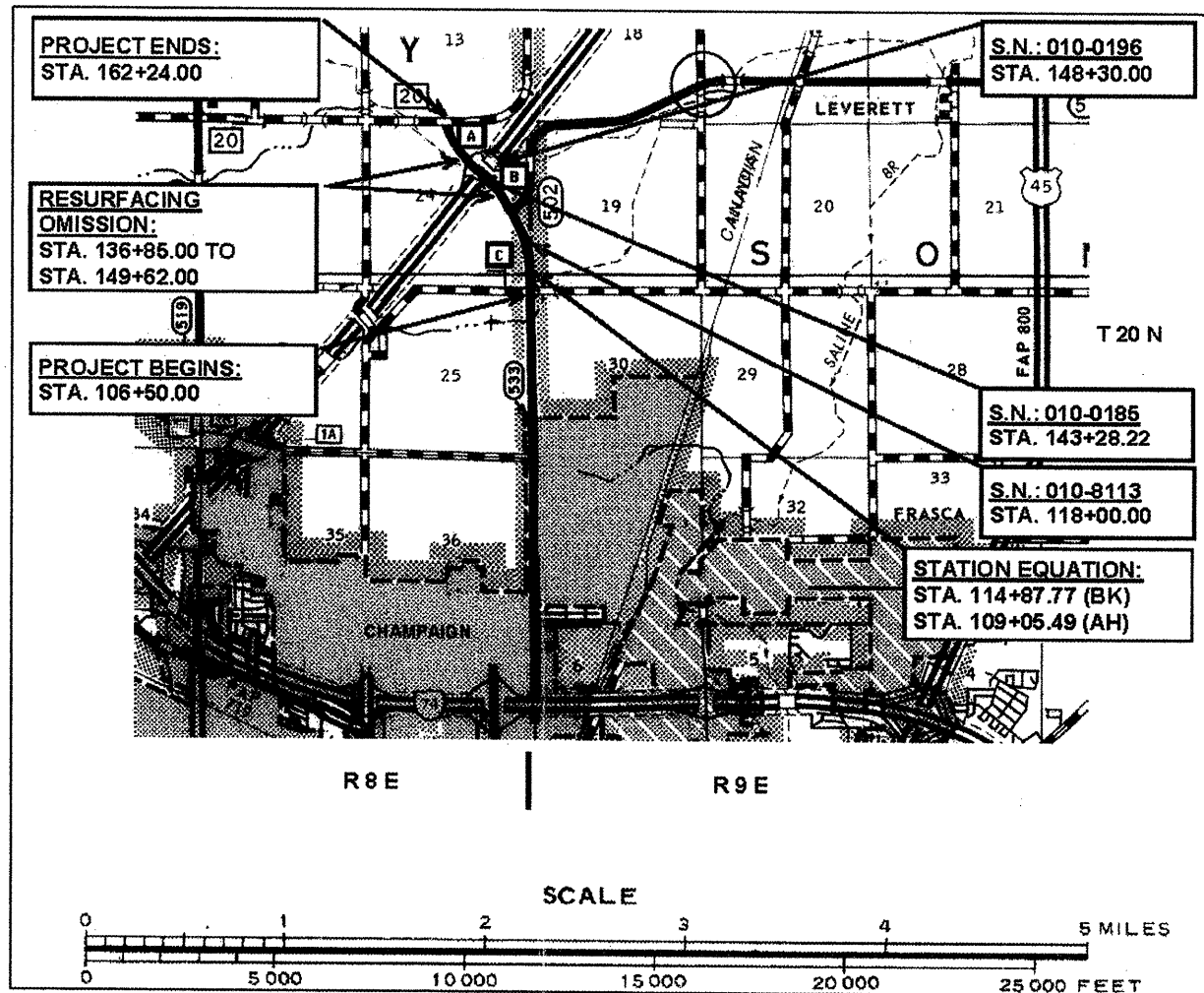
J.U.L.I.E.
 JOINT UTILITY LOCATION INFORMATION FOR EXCAVATION

TOWNSHIPS: HENSLEY, SOMER

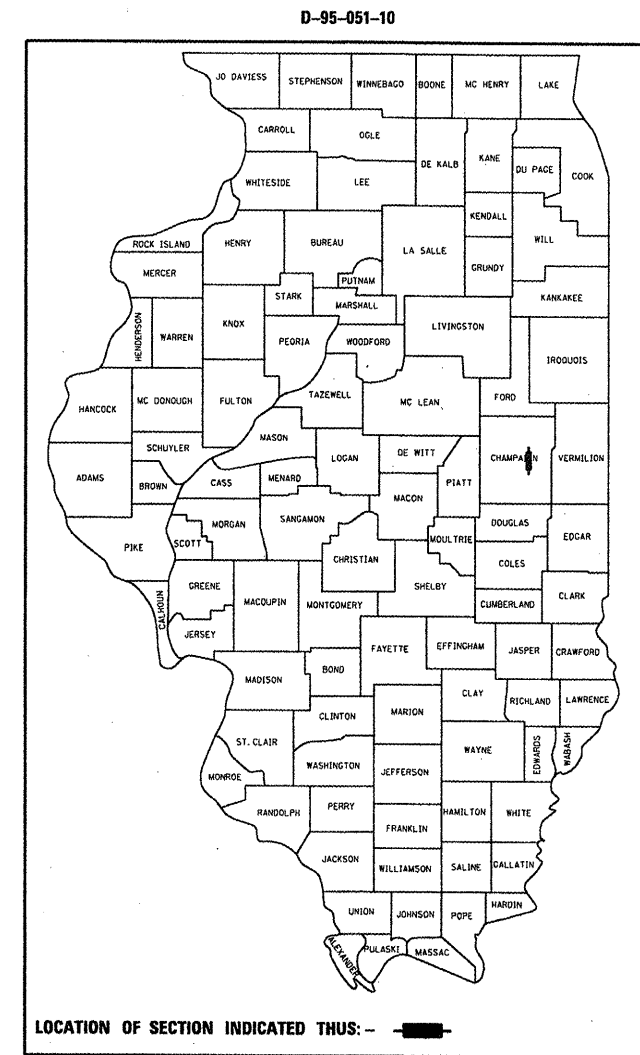
PROJECT ENGINEER: JASON STULTS
 SQUAD LEADER: GREG EAGLIN
 DESIGNER: STACEY LAWTON
 217-465-4181

CONTRACT NO. 70874

F.A.S. ROUTE 533 / (MARKET STREET)
 SECTION (10-34,HB-5,106)RS-1
 PROJECT RS-0533(102)
 RESURFACING (SMART)
 CHAMPAIGN COUNTY
 C-95-051-10
 N. OF I-57 TO FORD HARRIS RD. IN CHAMPAIGN



TOTAL LENGTH OF SECTION & PROJECT = 6,156.28 FT. = 1.166 MILE
 NET LENGTH OF SECTION & PROJECT = 4,879.28 FT. = 0.924 MILE



STATE OF ILLINOIS
 DEPARTMENT OF TRANSPORTATION
 DIVISION OF HIGHWAYS

SUBMITTED 1/26 20 12
Joseph W. Cooney
 DEPUTY DIRECTOR OF HIGHWAYS, REGION ENGINEER
March 23 20 12
John D. Baranzelli, P.E. lcu
 acting ENGINEER OF DESIGN AND ENVIRONMENT
March 23 20 12
William R. Frey lcu
 acting DIRECTOR OF HIGHWAYS, CHIEF ENGINEER

**PRINTED BY THE AUTHORITY
 OF THE STATE OF ILLINOIS**

INDEX OF SHEETS

<u>SHEET NO.</u>	<u>DESCRIPTION</u>
1	COVER SHEET
2	INDEX OF SHEETS
2	LIST OF HIGHWAY STANDARDS
3	GENERAL NOTES
4-5	SUMMARY OF QUANTITIES
6-9	EXISTING AND PROPOSED TYPICAL SECTIONS
10-13	SCHEDULE OF QUANTITIES
14-16	PLAN SHEETS
17	DETAILS FOR MILLING AND PAVING TRANSITIONS
18	DETAIL FOR SIDEROAD RETURNS
19	TYPICAL DETAIL FOR PRIVATE OR COMMERCIAL ENTRANCES
19	TYPICAL DETAIL FOR FIELD ENTRANCES
20	DETAIL FOR MAILBOX TURNOUT (RURAL)
21	DETAIL FOR PCC PARTIAL DEPTH HOT-MIX ASPHALT PATCHING
22	DETAIL FOR SURVEY MONUMENT COVER ASSEMBLY
23-26	DETAIL FOR PAVEMENT MARKING AND MARKERS (RURAL & URBAN APPLICATIONS)

LIST OF STANDARDS

<u>STANDARD NO.</u>	<u>NAME OF STANDARD</u>
000001-06	STANDARD SYMBOLS, ABBREVIATIONS AND PATTERNS
001006	DECIMAL OF AN INCH AND OF A FOOT
406201-01	MAILBOX TURNOUT
442201-03	CLASS C AND D PATCHES
482011-03	HMA SHOULDER STRIPS/SHOULDERS WITH RESURFACING OR WIDENING AND RESURFACING PROJECTS
701006-03	OFF-ROAD OPERATIONS, 2L, 2W, 15' (4.5 M) TO 24" (600 MM) FROM PAVEMENT EDGE
701201-04	LANE CLOSURE, 2L, 2W, DAY ONLY, FOR SPEEDS ≥ 45 MPH
701301-04	LANE CLOSURE, 2L, 2W, SHORT TIME OPERATIONS
701306-03	LANE CLOSURE, 2L, 2W, SLOW MOVING OPERATIONS DAY ONLY, FOR SPEEDS ≥ 45 MPH
701311-03	LANE CLOSURE, 2L, 2W, MOVING OPERATIONS - DAY ONLY
701901-02	TRAFFIC CONTROL DEVICES
780001-03	TYPICAL PAVEMENT MARKINGS
781001-03	TYPICAL APPLICATIONS RAISED REFLECTIVE PAVEMENT MARKERS

FILE NAME =	USER NAME = ppersonbr	DESIGNED - SEL	REVISED -	STATE OF ILLINOIS DEPARTMENT OF TRANSPORTATION	INDEX OF SHEETS & LIST OF STANDARDS	F.A.S. RTE.	SECTION	COUNTY	TOTAL SHEETS	SHEET NO.
c:\pwork\pwork\pwork\personbr\00249274\05	70874-shc-gennote.dgn	DRAWN - BBP	REVISED -			533	(10-34,HB-5,106)RS-1	CHAMPAIGN	26	2
PLOT SCALE = 40.0000 ' / in.	CHECKED -	REVISED -	REVISED -			CONTRACT NO. 70874				
PLOT DATE = 1/27/2012	DATE - 02/24/11	REVISED -	REVISED -		SCALE: NONE	SHEET NO. OF	SHEETS	STA.	TO STA.	ILLINOIS FED. AID PROJECT

GENERAL NOTES

G.N. - 100
ENGLISH UNITS OF MEASUREMENT SHALL GOVERN OVER AND SUPERSEDE ANY METRIC UNITS SHOWN IN THIS CONTRACT. WHERE INCLUDED, METRIC UNITS ARE FOR INFORMATION ONLY.

G.N. - 100A
ELECTRONIC FILES AND/OR ELECTRONIC SURVEY INFORMATION INCLUDING CADD FILES WILL NOT BE AVAILABLE TO THE CONTRACTOR.

G.N. - 406
THE QUANTITIES INCLUDED IN THE PLANS FOR HOT-MIX ASPHALT RESURFACING ARE INTENDED TO GIVE THE COVERAGE SHOWN ON THE TYPICAL CROSS SECTIONS. IT IS NOT INTENDED TO INCREASE THE THICKNESS OF THE HOT-MIX ASPHALT MIXTURE IN ORDER TO USE ALL OF THE QUANTITIES INLCUDED IN THE CONTRACT.

G.N. - 406H
MIXTURE REQUIREMENTS

THE FOLLOWING MIXTURE REQUIREMENTS ARE APPLICABLE FOR THIS PROJECT:

Location Mixture Use	F.A.S. 533 / (Market St.)			
	Class D	P.D Patch	Incid	Polymer Surface and HMA Shoulders
AC/PG	PG 64-22	PG 64-22	PG 64-22	SBS PG 70-22
RAP % (Max)	15	15	10	10
Design Air Voids	4.0% @ Ndes=70	4.0% @ Ndes=70	4.0% @ Ndes=70	4.0% @ Ndes=70
Mix Comp(Gradation)	IL 19.0	IL 9.5	IL 9.5	IL 9.5
Friction Aggregate	N.A.	Mix C	Mix C	Mix D

G.N. - 408B
THE INCIDENTAL HOT-MIX ASPHALT SURFACING SHALL BE COMPACTED AS REQUIRED BY THE SPECIFICATIONS FOR DESIGN NUMBER OF GYRATIONS BEING USED,

AT THE FOLLOWING LOCATION:
RT. STA. 127+90.00 (LEVERETT ROAD)

G.N. - 442B -- PATCHING SCHEDULES
THE PATCHING SCHEDULES INCLUDED IN THE PLANS REPRESENT THE BEST INFORMATION AVAILABLE AT THE TIME OF COMPLETION OF THE PLANS FOR LETTING. VARIATIONS IN LOCATION AND SIZES OF BOTH FULL-DEPTH AND PARTIAL-DEPTH PATCHES MAY OCCUR.

G.N.-667
THE RESIDENT ENGINEER SHALL CONTACT THE PROGRAM DEVELOPMENT CHIEF OF SURVEYS PRIOR TO THE PRE-CONSTRUCTION CONFERENCE FOR INSTRUCTION AS TO SETTING OF TEMPORARY OR PERMANENT TIES FOR CENTERLINE ALIGNMENT CONTROL SURVEY MARKERS (PC'S, PT'S, AND PI'S). PROJECT IMPLEMENTATION PERSONNEL WILL BE RESPONSIBLE FOR SETTING THESE MARKERS.

G.N.-703A
SHORT TERM PAVEMENT MARKING SHALL BE APPLIED TO THE PAVEMENT AFTER ANY OF THE FOLLOWING: COLD MILLING AND/OR PLACING BITUMINOUS MATERIALS (PRIME COAT), LEVELING BINDER (MACHINE METHOD), BINDER AND SURFACE COURSES. SHORT TERM PAVEMENT MARKING PLACED ON THE SURFACE, SHALL COINCIDE WITH THE FINAL PAVEMENT STRIPING. SHORT TERM PAVEMENT MARKING PLACED PRIOR TO THE SURFACE SHALL COINCIDE WITH THE EXISTING PAVEMENT MARKINGS. USE 4 FEET PER 40 FEET (OR 10% PER STATION).

G.N. - 781
RAISED REFLECTIVE PAVEMENT MARKERS SHALL BE PLACED IN ACCORDANCE WITH STANDARD 781001, AND THE DETAILS SHOWN IN THE PLANS. IF THERE IS ANY DISCREPANCY BETWEEN THE STANDARD AND THE DETAILS IN THE PLANS, THE DETAILS IN THE PLANS SHALL GOVERN. THE FINAL PAVEMENT MARKINGS SHALL BE IN PLACE PRIOR TO PLACING THE RAISED REFLECTIVE PAVEMENT MARKERS AND THE RAISED REFLECTIVE PAVEMENT MARKERS SHALL BE PLACED MIDWAY IN THE 30 FOOT (9m) SPACE BETWEEN THE DASHED CENTERLINE STRIPES (WHEN APPLICABLE).

G.N.-1004.01
COARSE AGGREGATE GRADATION CA-10 MAY BE USED WHENEVER COARSE AGGREGATE CA-6 IS SPECIFIED IN THE STANDARD SPECIFICATIONS.

COMMITMENTS

THERE ARE NO COMMITMENTS FOR THIS CONTRACT.

FILE NAME =	USER NAME = piersonbr	DESIGNED - SEL	REVISED -	STATE OF ILLINOIS DEPARTMENT OF TRANSPORTATION	GENERAL NOTES	F.A.S. RTE.	SECTION	COUNTY	TOTAL SHEETS	SHEET NO.
c:\pwork\pwork\piersonbr\0249274\050874-sht-gennote.dgn	DRAWN - BBP	REVISED -	533			(10-34,HB-5,106)RS-1	CHAMPAIGN	26	3	
PLOT SCALE = 48,0000 ' / in.	CHECKED -	REVISED -	CONTRACT NO. 70874							
PLOT DATE = 1/27/2012	DATE - 02/24/11	REVISED -	ILLINOIS FED. AID PROJECT							
				SCALE: NONE	SHEET NO. OF SHEETS	STA. TO STA.				

SUMMARY OF QUANTITIES

LOCATION OF WORK: FAS 533 (MARKET ST)
 RURAL
 COUNTY: CHAMPAIGN
 STA 106+50.00
 TO
 STA 162+24.00
 FUNDING BREAKOUT: 80% FEDERAL
 20% STATE
 CONSTRUCTION TYPE CODE: 0005

<u>CODE NO</u>	<u>ITEM</u>	<u>UNIT</u>	<u>TOTAL QUANTITY</u>
40600100	BITUMINOUS MATERIALS (PRIME COAT)	GALLON	1,520.0
40600300	AGGREGATE (PRIME COAT)	TON	30.0
40600990	TEMPORARY RAMP	SQ YD	140.0
40603540	POLYMERIZED HOT-MIX ASPHALT SURFACE COURSE, MIX "D", N70	TON	1,629.0
40800010	BITUMINOUS MATERIALS (PRIME COAT)	GALLON	174.0
40800030	AGGREGATE (PRIME COAT)	TON	4.0
40800050	INCIDENTAL HOT-MIX ASPHALT SURFACING	TON	195.0
44000155	HOT-MIX ASPHALT SURFACE REMOVAL, 1 1/2"	SQ YD	14,960.0
44022039	PARTIAL DEPTH REMOVAL 5 1/2"	SQ YD	485.0
44201789	CLASS D PATCHES, TYPE II, 12 INCH	SQ YD	157.0
44201794	CLASS D PATCHES, TYPE III, 12 INCH	SQ YD	17.0
44201796	CLASS D PATCHES, TYPE IV, 12 INCH	SQ YD	58.0
48102100	AGGREGATE WEDGE SHOULDER, TYPE B	TON	205.0
48203100	HOT-MIX ASPHALT SHOULDERS	TON	73.0

FILE NAME =	USER NAME = piersonbr	DESIGNED - SEL	REVISED -	STATE OF ILLINOIS DEPARTMENT OF TRANSPORTATION	SUMMARY OF QUANTITIES			F.A.S. RTE.	SECTION	COUNTY	TOTAL SHEETS	SHEET NO.
c:\pwork\pwork\piersonbr\d0249274\0570874-shr-500.dgn	DRAWN - BBP	REVISED -	533					(10-34,HB-5,106)RS-1	CHAMPAIGN	26	4	
PLOT SCALE = 40.0000 ' / in.	CHECKED -	REVISED -	SCALE: NONE SHEET NO. 1 OF 2 SHEETS STA. TO STA.					CONTRACT NO. 70874				
PLOT DATE = 1/27/2012	DATE - 02/24/11	REVISED -	ILLINOIS FED. AID PROJECT									

SUMMARY OF QUANTITIES

LOCATION OF WORK: FAS 533 (MARKET ST)
 RURAL
 COUNTY: CHAMPAIGN
 STA 106+50.00
 TO
 STA 162+24.00
 FUNDING BREAKOUT: 80% FEDERAL
 20% STATE
 CONSTRUCTION TYPE CODE: 0005

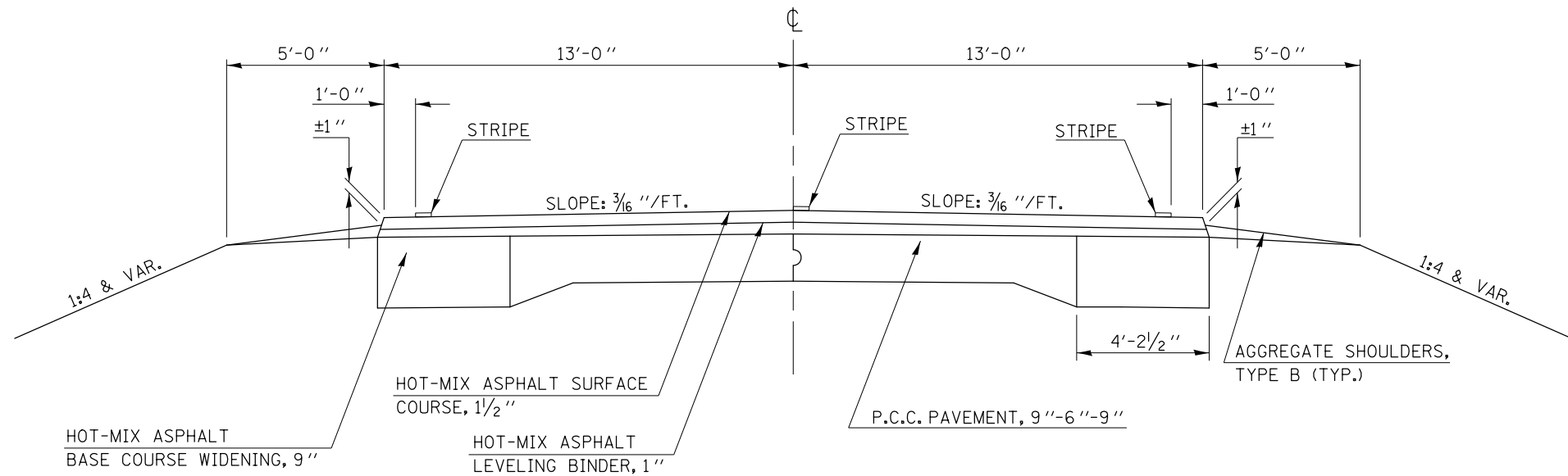
CODE NO	ITEM	UNIT	TOTAL QUANTITY
67100100	MOBILIZATION	L SUM	1.0
70100450	TRAFFIC CONTROL AND PROTECTION, STANDARD 701201	L SUM	1.0
70100460	TRAFFIC CONTROL AND PROTECTION, STANDARD 701306	L SUM	1.0
70300100	SHORT TERM PAVEMENT MARKING	FOOT	1,000.0
70300220	TEMPORARY PAVEMENT MARKING LINE - 4"	FOOT	11,239.0
70300280	TEMPORARY PAVEMENT MARKING LINE - 24"	FOOT	40.0
70301000	WORK ZONE PAVEMENT MARKING REMOVAL	SQ FT	165.0
* 78001110	PAINT PAVEMENT MARKING - LINE 4"	FOOT	15,380.0
* 78001180	PAINT PAVEMENT MARKING - LINE 24"	FOOT	40.0
* 78100100	RAISED REFLECTIVE PAVEMENT MARKER	EACH	65.0
X4400196	HOT-MIX ASPHALT SURFACE REMOVAL, SPECIAL	SQ YD	1,738.0
X4421000	PARTIAL DEPTH PATCHING	TON	149.0
X2020110	GRADING AND SHAPING SHOULDERS	UNIT	89.0
Z0070100	SURVEY MONUMENT COVER ASSEMBLY	EACH	5.0

* DENOTES SPECIALTY ITEM

FILE NAME =	USER NAME = piersonbr	DESIGNED - SEL	REVISED -	STATE OF ILLINOIS DEPARTMENT OF TRANSPORTATION	SUMMARY OF QUANTITIES				F.A.S. RTE.	SECTION	COUNTY	TOTAL SHEETS	SHEET NO.
ei\pwwork\pwwidat\piersonbr\d0249274\05	70874-sht-S00.dgn	DRAWN - BBP	REVISED -		533	(10-34,HB-5,106)RS-1	CHAMPAIGN	26	5				
	PLOT SCALE = 40.0000 ' / in.	CHECKED -	REVISED -		CONTRACT NO. 70874								
	PLOT DATE = 1/27/2012	DATE - 02/24/11	REVISED -		SCALE: NONE	SHEET NO. 2 OF 2 SHEETS	STA. TO STA.	ILLINOIS FED. AID PROJECT					

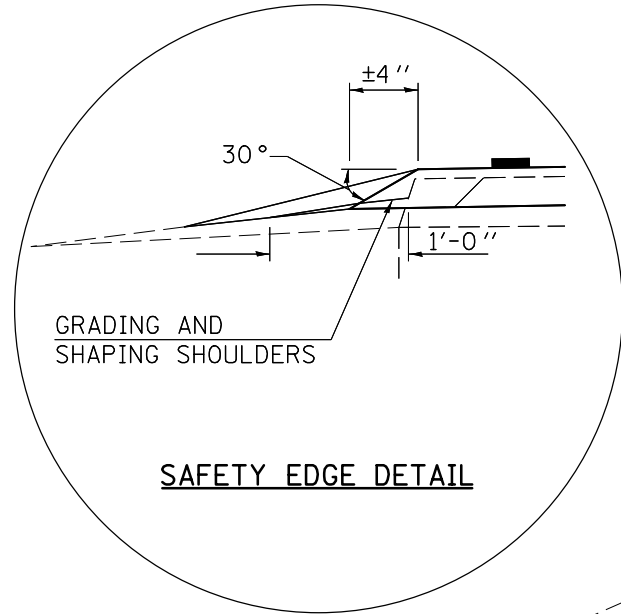
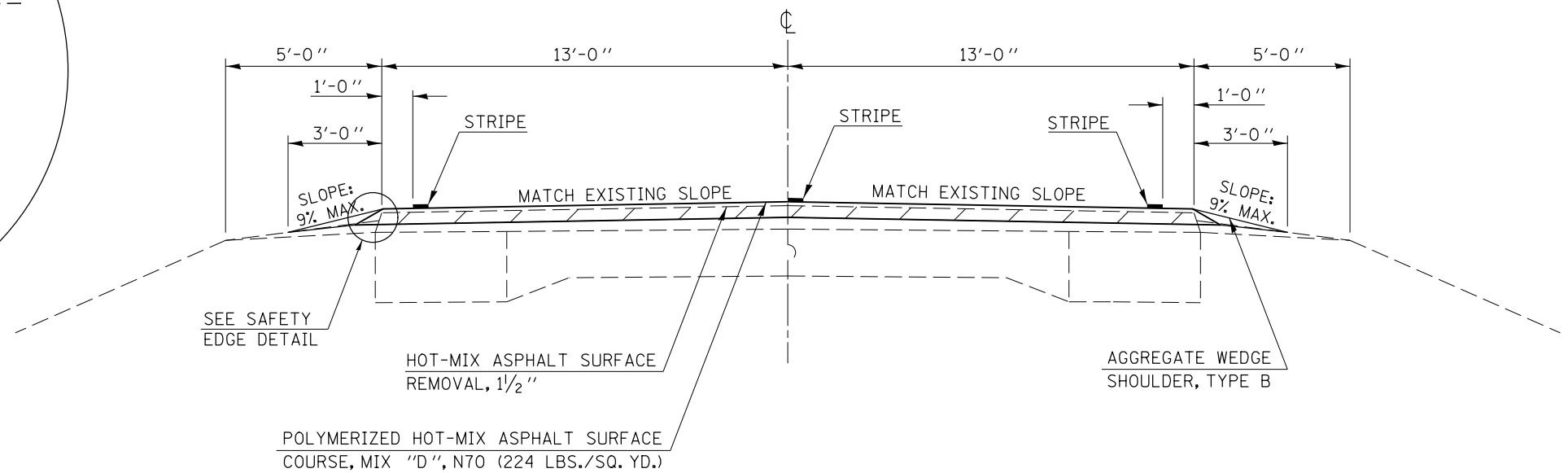
(A) EXISTING TYPICAL CROSS SECTION

STATION 106+50.00 TO STATION 113+86.00 (B)



(1) PROPOSED TYPICAL CROSS SECTION

STATION 106+50.00 TO STATION 113+86.00 (2)



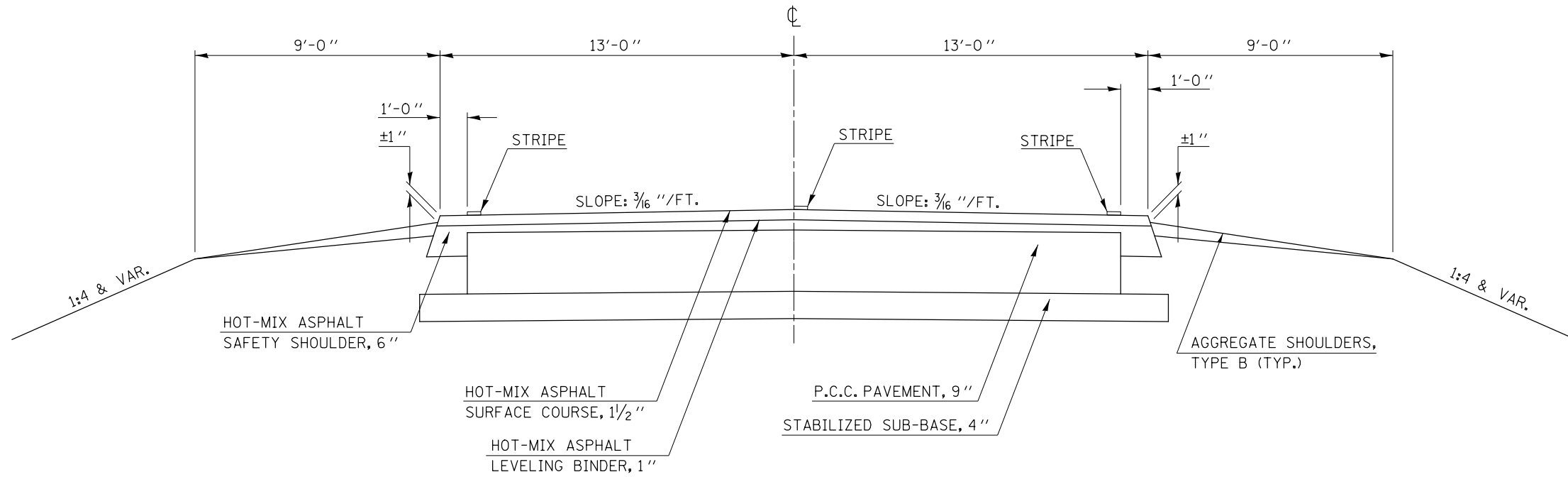
HMA SURFACE REMOVAL, 1 1/2"

FILE NAME =	USER NAME = ppersonbr	DESIGNED - SEL	REVISED -	STATE OF ILLINOIS DEPARTMENT OF TRANSPORTATION	TYPICAL CROSS SECTIONS			F.A.S. RTE.	SECTION	COUNTY	TOTAL SHEETS	SHEET NO.
ci:\pwork\pwork\pwork\personbr\d0249274\0570874-sh-t-Typc01s.dgn		DRAWN - BBP	REVISED -		533	(10-34,HB-5,106)RS-1	Champaign	26	6			
PLOT SCALE = 40.0000' / in.		CHECKED -	REVISED -		CONTRACT NO. 70874			ILLINOIS FED. AID PROJECT				
PLOT DATE = 1/27/2012		DATE - 03/03/11	REVISED -		SCALE: NONE	SHEET NO. 1 OF 4 SHEETS	STA. TO STA.					

C EXISTING TYPICAL CROSS SECTION

STATION TO STATION
 (B) 133+78.69 TO 136+85.00 (D)

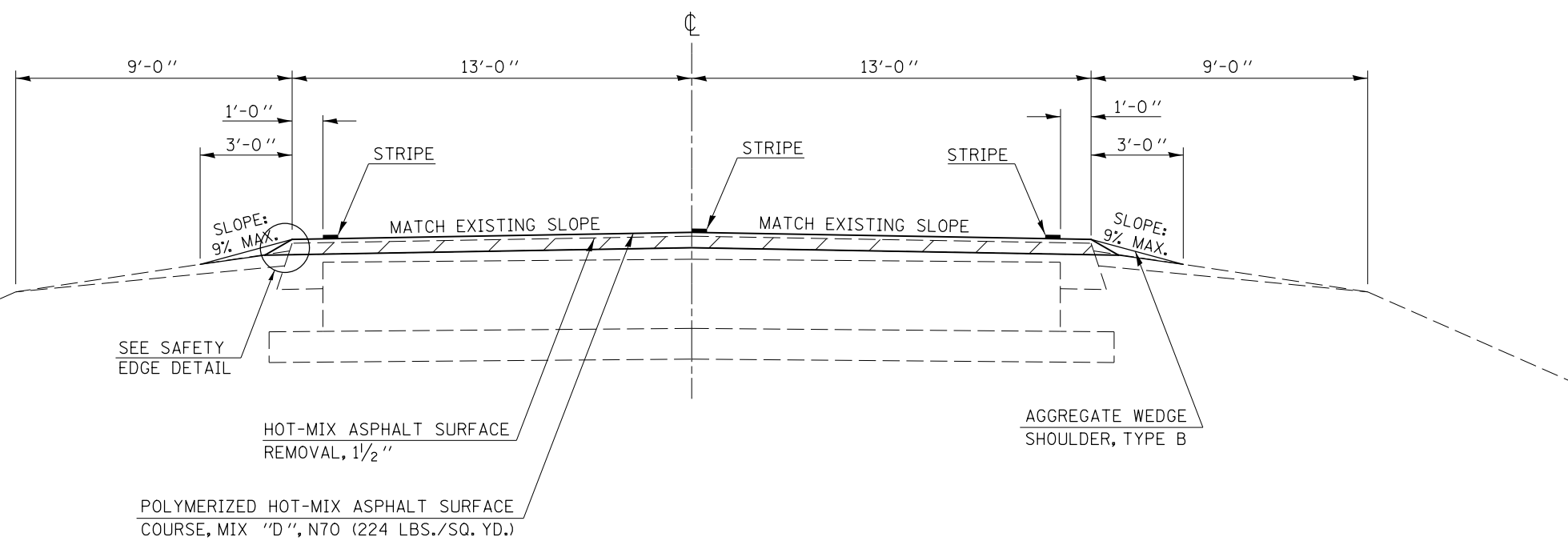
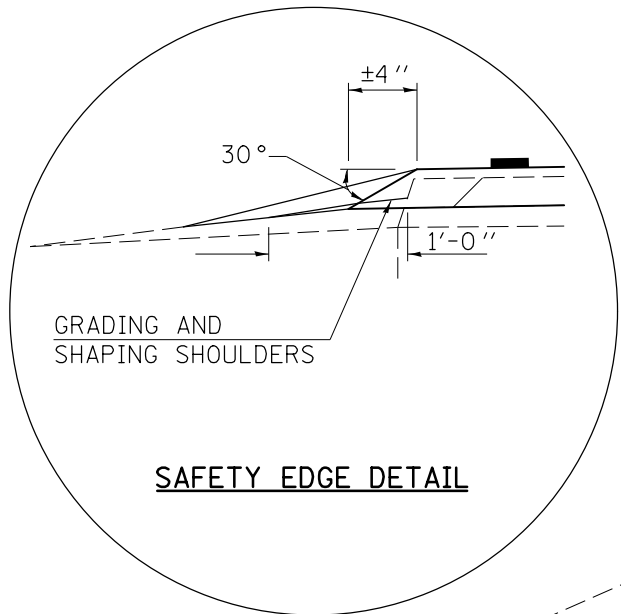
RESURFACING OMISSION:
 STA. 136+85.00 TO STA. 149+62.00



3 PROPOSED TYPICAL CROSS SECTION

STATION TO STATION
 (2) 133+78.69 TO 136+85.00 (4)

RESURFACING OMISSION:
 STA. 136+85.00 TO STA. 149+62.00



HMA SURFACE REMOVAL, 1 1/2"

FILE NAME =	USER NAME = ppersonbr	DESIGNED - SEL	REVISED -	STATE OF ILLINOIS DEPARTMENT OF TRANSPORTATION	TYPICAL CROSS SECTIONS			F.A.S. RTE.	SECTION	COUNTY	TOTAL SHEETS	SHEET NO.
c:\pwork\pwork\pwork\personbr\d0249274\0570874-sh-t-Typc01s.dgn		DRAWN - BBP	REVISED -		SCALE: NONE	SHEET NO. 3 OF 4 SHEETS	STA. TO STA.	533	(10-34,HB-5,106)RS-1	Champaign	26	8
	PLOT SCALE = 40.0000' / in.	CHECKED -	REVISED -					CONTRACT NO. 70874				
	PLOT DATE = 1/27/2012	DATE - 03/03/11	REVISED -		ILLINOIS FED. AID PROJECT							

SCHEDULE OF QUANTITIES

SHEET 1 OF 4

PAVEMENT PATCHING

STATION	LANE	EXISTING OVERLAY THICKNESS (INCHES)	LENGTH (FT)	WIDTH (FT)	44022039	X4421000	44201789	44201794	44201796
					PARTIAL DEPTH REMOVAL, 5 1/2" (SQ YD)	PARTIAL DEPTH PATCHING (TON)	CLASS D PATCH TYPE II (SQ YD)	CLASS D PATCH TYPE III (SQ YD)	CLASS D PATCH TYPE IV (SQ YD)
106+62.00	N.B.	2.50	4.00	13.00	5.78	1.78			
106+85.00	N.B.	2.50	4.00	13.00	5.78	1.78			
107+06.00	N.B.	2.50	4.00	13.00	5.78	1.78			
107+38.00	N.B.	2.50	4.00	13.00	5.78	1.78			
108+51.00	N.B.	2.50	4.00	13.00	5.78	1.78			
108+86.00	N.B.	2.50	4.00	13.00	5.78	1.78			
109+38.00	N.B.	2.50	4.00	13.00	5.78	1.78			
109+87.00	N.B.	2.50	4.00	13.00	5.78	1.78			
110+37.00	N.B.	2.50	4.00	13.00	5.78	1.78			
110+70.00	N.B.	2.50	4.00	13.00	5.78	1.78			
111+19.00	N.B.	2.50	4.00	13.00	5.78	1.78			
111+38.00	N.B.	2.50	4.00	13.00	5.78	1.78			
112+94.00	N.B.	2.50	4.00	13.00	5.78	1.78			
113+12.00	N.B.	2.50	4.00	13.00	5.78	1.78			
113+40.00	N.B.	2.50	4.00	13.00	5.78	1.78			
113+91.00	N.B.	2.50	4.00	13.00	5.78	1.78			
114+50.00	N.B.	2.50	6.00	13.00	8.67	2.67			
110+08.00	N.B.	2.50	4.00	13.00	5.78	1.78			
112+09.00	N.B.	2.50	4.00	13.00	5.78	1.78			
115+12.00	N.B.	2.50	4.00	13.00	5.78	1.78			
121+17.00	N.B.	2.50	4.00	13.00	5.78	1.78			
123+19.00	N.B.	2.50	4.00	13.00	5.78	1.78			
126+18.00	N.B.	2.50	4.00	13.00	5.78	1.78			
129+18.00	N.B.	2.50	4.00	13.00	5.78	1.78			
135+85.00	N.B.	2.50	40.00	6.00	26.67	8.21			
150+96.00	N.B.		20.00	13.00				28.90	
152+01.00	N.B.		6.00	13.00			8.70		
154+01.00	N.B.		6.00	13.00			8.70		
155+00.00	N.B.		6.00	13.00			8.70		
157+01.00	N.B.		6.00	13.00			8.70		
157+22.00	N.B.		6.00	13.00			8.70		
158+01.00	N.B.		6.00	13.00			8.70		
159+01.00	N.B.		6.00	13.00			8.70		
160+01.00	N.B.		6.00	13.00			8.70		
161+01.00	N.B.		6.00	13.00			8.70		
106+62.00	S.B.	2.50	4.00	13.00	5.78	1.78			
106+85.00	S.B.	2.50	4.00	13.00	5.78	1.78			
107+06.00	S.B.	2.50	4.00	13.00	5.78	1.78			
107+38.00	S.B.	2.50	4.00	13.00	5.78	1.78			
108+51.00	S.B.	2.50	4.00	13.00	5.78	1.78			
108+86.00	S.B.	2.50	4.00	13.00	5.78	1.78			
109+38.00	S.B.	2.50	4.00	13.00	5.78	1.78			
109+87.00	S.B.	2.50	4.00	13.00	5.78	1.78			
110+37.00	S.B.	2.50	4.00	13.00	5.78	1.78			
110+70.00	S.B.	2.50	4.00	13.00	5.78	1.78			
111+19.00	S.B.	2.50	4.00	13.00	5.78	1.78			

PAVEMENT PATCHING

STATION	LANE	EXISTING OVERLAY THICKNESS (INCHES)	LENGTH (FT)	WIDTH (FT)	44022039	X4421000	44201789	44201794	44201796
					PARTIAL DEPTH REMOVAL, 5 1/2" (SQ YD)	PARTIAL DEPTH PATCHING (TON)	CLASS D PATCH TYPE II (SQ YD)	CLASS D PATCH TYPE III (SQ YD)	CLASS D PATCH TYPE IV (SQ YD)
111+38.00	S.B.	2.50	4.00	13.00	5.78	1.78			
112+94.00	S.B.	2.50	4.00	13.00	5.78	1.78			
113+12.00	S.B.	2.50	4.00	13.00	5.78	1.78			
113+40.00	S.B.	2.50	4.00	13.00	5.78	1.78			
113+91.00	S.B.	2.50	4.00	13.00	5.78	1.78			
114+50.00	S.B.	2.50	6.00	13.00	8.67	2.67			
114+88.00	S.B.		12.00	13.00				17.30	
110+08.00	S.B.	2.50	6.00	13.00	8.67	2.67			
111+04.00	S.B.	2.50	20.00	13.00	28.89	8.90			
112+09.00	S.B.	2.50	8.00	13.00	11.56	3.56			
113+70.00	S.B.	2.50	12.00	13.00	17.33	5.34			
114+11.00	S.B.	2.50	6.00	13.00	8.67	2.67			
115+12.00	S.B.	2.50	6.00	13.00	8.67	2.67			
116+11.00	S.B.	2.50	8.00	13.00	11.56	3.56			
117+06.00	S.B.	2.50	30.00	6.00	20.00	6.16			
118+13.00	S.B.	2.50	4.00	13.00	5.78	1.78			
118+44.00	S.B.	2.50	30.00	6.00	20.00	6.16			
119+16.00	S.B.	2.50	6.00	13.00	8.67	2.67			
119+78.00	S.B.	2.50	6.00	13.00	8.67	2.67			
120+15.00	S.B.	2.50	6.00	13.00	8.67	2.67			
121+17.00	S.B.	2.50	12.00	13.00	17.33	5.34			
122+19.00	S.B.	2.50	6.00	6.00	4.00	1.23			
129+18.00	S.B.	2.50	4.00	13.00	5.78	1.78			
132+08.00	S.B.	2.50	8.00	6.00	5.33	1.64			
133+24.00	S.B.	2.50	8.00	6.00	5.33	1.64			
134+05.00	S.B.	2.50	8.00	6.00	5.33	1.64			
135+71.00	S.B.	2.50	8.00	6.00	5.33	1.64			
150+96.00	S.B.		20.00	13.00				28.90	
152+01.00	S.B.		6.00	13.00					
154+01.00	S.B.		6.00	13.00					
155+00.00	S.B.		6.00	13.00					
157+01.00	S.B.		6.00	13.00					
157+22.00	S.B.		6.00	13.00					
158+01.00	S.B.		6.00	13.00					
159+01.00	S.B.		6.00	13.00					
160+01.00	S.B.		6.00	13.00					
161+01.00	S.B.		6.00	13.00					
160+01.00	S.B.		6.00	13.00					
161+01.00	S.B.		6.00	13.00					
TOTAL =					484.89	149.35	156.60	17.30	57.80
USE =					485.00	149.00	157.00	17.00	58.00
					SQ YD	TON	SQ YD	SQ YD	SQ YD

NOTE:
THE STATIONS LISTED FOR THE PATCHES ARE APPROXIMATE LOCATIONS.
THE ACTUAL LOCATIONS AND SIZE SHALL BE FIELD VERIFIED AS SPECIFIED IN G.N. - 442B.

SCHEDULE OF QUANTITIES

SHEET 2 OF 4

44000155 HOT-MIX ASPHALT SURFACE REMOVAL 1 1/2"

LOCATION	STATION	TO	STATION	LENGTH (FT)	WIDTH (FT)	AREA (SQ YD)
N.B. MAINLINE	106+50.00		114+87.77 (BK)	837.77	13.00	1210.11
N.B. MAINLINE	109+05.49 (AH)		136+85.00	2779.51	13.00	4014.85
N.B. SHOULDER	120+50.00		127+20.00	670.00	10.00	744.44
N.B. MAINLINE	149+62.00		162+24.00	1262.00	13.00	1882.89
S.B. MAINLINE	106+50.00		114+87.77 (BK)	837.77	13.00	1210.11
S.B. MAINLINE	109+05.49 (AH)		136+85.00	2779.51	13.00	4014.85
S.B. MAINLINE	149+62.00		162+24.00	1262.00	13.00	1882.89
TOTAL =						14,960.14 SQ YD
USE =						14,960.00 SQ YD

XX008432 GRADING AND SHAPING SHOULDERS

LOCATION	STATION	TO	STATION	LENGTH (UNIT)
N.B. MAINLINE	106+50.00		114+87.77 (BK)	8.4
N.B. MAINLINE	109+05.49 (AH)		120+50.00	11.4
N.B. MAINLINE	129+75.00		136+85.00	7.1
N.B. MAINLINE	149+62.00		162+24.00	12.6
S.B. MAINLINE	106+50.00		114+87.77 (BK)	8.4
S.B. MAINLINE	109+05.49 (AH)		136+85.00	27.8
S.B. MAINLINE	149+62.00		162+24.00	12.6
TOTAL =				88.3
USE =				89

40600990 TEMPORARY RAMP

LOCATION	STATION	TO	STATION	LENGTH (FT)	WIDTH (FT)	AREA (SQ YD)
N.B. MAINLINE	106+50.00		106+55.00	5.00	13.00	7.22
N.B. MAINLINE	136+80.00		136+85.00	5.00	13.00	7.22
N.B. MAINLINE	149+62.00		149+67.00	5.00	13.00	7.22
N.B. LEVERETT ROAD	11+64.00		11+69.00	5.00	50.00	27.78
N.B. MAINLINE	162+19.00		162+24.00	5.00	62.00	34.44
S.B. MAINLINE	106+50.00		106+55.00	5.00	13.00	7.22
S.B. MAINLINE	136+80.00		136+85.00	5.00	13.00	7.22
S.B. MAINLINE	149+62.00		149+67.00	5.00	13.00	7.22
S.B. MAINLINE	162+19.00		162+24.00	5.00	62.00	34.44
TOTAL =						140.00 SQ YD
USE =						140.00 SQ YD

TABULATION OF MAINLINE AND SHOULDER RESURFACING QUANTITIES

LOCATION	STATION	TO	STATION	LENGTH (FT)	WIDTH (FT)	AREA (SQ YD)	AVERAGE THICKNESS (INCHES)	40603540	40600100	40600300	48203100
								POLY HMA SC MIX "D" N70 (TON)	BIT MATLS PRIME COAT (GALLON)	AGGREGATE PRIME COAT (TON)	HMA SHOULDER (TON)
N.B. MAINLINE	106+50.00		114+87.77 (BK)	837.77	13.00	1210.11	2.00	135.53	121.01	2.42	
N.B. MAINLINE	109+05.49 (AH)		136+85.00	2779.51	13.00	4014.85	2.00	449.66	401.48	8.03	
N.B. MAINLINE	149+62.00		162+24.00	1262.00	13.00	1822.89	2.00	214.16	182.29	3.65	
N.B. SHOULDER	120+50.00 RT.		127+20.00 RT.	670.00	10.00	744.44	1.75		74.44	1.49	72.96
N.B. SAFETY EDGE	106+50.00		*	4879.28	0.33	178.91	1.00	15.02	17.89	0.36	
S.B. MAINLINE	106+50.00		114+87.77 (BK)	837.77	13.00	1210.11	2.00	135.53	121.01	2.42	
S.B. MAINLINE	109+05.49 (AH)		136+85.00	2779.51	13.00	4014.85	2.00	449.66	401.48	8.03	
S.B. MAINLINE	149+62.00		162+24.00	1262.00	13.00	1822.89	2.00	214.16	182.29	3.65	
S.B. SAFETY EDGE	106+50.00		*	4879.28	0.33	178.91	1.00	15.02	17.89	0.36	
TOTAL =								1628.76	1519.80	30.40	72.96
USE =								1629.00	1520.00	30.00	73.00
								TON	GALLON	TON	TON

*REFER TO PLAN SHEETS AND TYPICALS FOR EXACT LOCATIONS

FILE NAME =	USER NAME = piersonbr	DESIGNED - SEL	REVISED -	STATE OF ILLINOIS DEPARTMENT OF TRANSPORTATION	SCHEDULE OF QUANTITIES			F.A.S. RTE.	SECTION	COUNTY	TOTAL SHEETS	SHEET NO.
c:\pw_work\pwidot\piersonbr\0224274\05	0874-sht-schedule.dgn	DRAWN - BBP	REVISED -		SCALE: NONE	SHEET NO. 2 OF 4 SHEETS	STA. TO STA.	533	(10-34,HB-5,106)RS-1	CHAMPAIGN	26	11
	PLOT SCALE = 40,0000 "/ in.	CHECKED -	REVISED -					CONTRACT NO. 70874				
	PLOT DATE = 1/27/2012	DATE - 02/24/11	REVISED -		ILLINOIS FED. AID PROJECT							

SCHEDULE OF QUANTITIES

SHEET 3 OF 4

INCIDENTAL HOT-MIX ASPHALT SCHEDULE

STATION	LOCATION	AREA (SQ YD)	INCIDENTAL HMA THICKNESS (INCHES)	X4400196	40800050	40800010	40800030
				HMA SURFACE REMOVAL, SPECIAL (SQ YD)	INCIDENTAL HMA SURFACING (TON)	BIT MATLS PRIME COAT (GALLON)	AGGREGATE PRIME COAT (TON)
107+32.88	LT MAINLINE	65.00	2.00	65.00	7.28	6.50	0.13
111+01.01	LT MAINLINE	40.00	2.00	40.00	4.48	4.00	0.08
112+73.13	LT MAINLINE	58.00	2.00	58.00	6.50	5.80	0.12
111+71.30	RT MAINLINE	62.00	2.00	62.00	6.94	6.20	0.12
111+88.89	LT MAINLINE	45.00	2.00	45.00	5.04	4.50	0.09
114+00.04	LT MAINLINE	16.00	2.00	16.00	1.79	1.60	0.03
118+58.54	RT MAINLINE	12.00	2.00	12.00	1.34	1.20	0.02
127+90.00	RT LEVERETT ROAD	1440.00	2.00	1440.00	161.28	144.00	2.88
TOTAL =				1738.00	194.66	173.80	3.48
USE =				1738.00	195.00	174.00	4.00
				SQ YD	TON	GALLON	TON

70300100 SHORT TERM PAVEMENT MARKING

LOCATION	STATION	TO	STATION	LENGTH (FT)	QUANTITY (FT)	APPLY AFTER	COLOR
CL.	106+50.00		114+87.77 (BK)	87.78	175.55	MILLING & HMA SURFACE	YELLOW
CL.	109+05.49 (AH)		136+85.00	281.95	563.90	MILLING & HMA SURFACE	YELLOW
CL.	149+62.00		162+24.00	130.20	260.40	MILLING & HMA SURFACE	YELLOW
TOTAL =					999.86	FT	
USE =					1000.00	FT	

78301000 WORK ZONE PAVEMENT MARKING REMOVAL

LOCATION	STATION	TO	STATION	LENGTH (FT)	AREA (SQ FT)	
C.L.	106+50.00		114+87.77 (BK)	87.78	28.97	
C.L.	109+05.49 (AH)		136+85.00	281.95	93.04	
C.L.	149+62.00		162+24.00	130.20	42.97	
TOTAL =					164.98	SQ FT
USE =					165.00	SQ FT

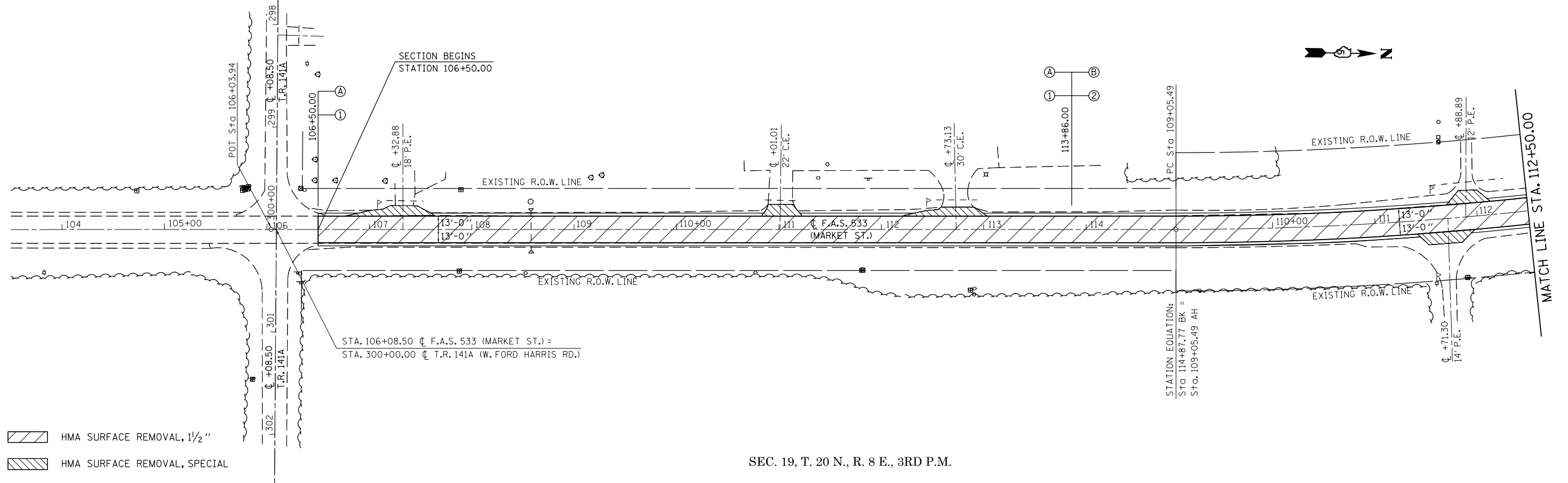
48102100 AGGREGATE WEDGE SHOULDERS TYPE B

LOCATION	STATION	TO	STATION	LENGTH (FT)	WIDTH (FT)	AREA (TON)
N.B. MAINLINE	106+50.00		113+86.00	736.00	3.00	15.31
N.B. MAINLINE	113+86.00		114+87.77 (BK)	101.77	3.50	2.47
N.B. MAINLINE	109+05.49 (AH)		120+50.00	1144.51	3.00	23.81
N.B. MAINLINE	128+75.00		136+85.00	810.00	3.00	16.85
N.B. MAINLINE	149+62.00		162+24.00	1262.00	3.00	31.25
N.B. LEVERETT RD	10+13.00		11+69.00	312.00	2.00	4.33
S.B. MAINLINE	106+50.00		114+87.77 (BK)	837.77	3.00	17.43
S.B. MAINLINE	109+05.49 (AH)		136+85.00	2779.51	3.00	57.81
S.B. MAINLINE	149+62.00		162+24.00	1262.00	3.50	35.62
TOTAL =						204.87 TON
USE =						205.00 TON

78001110 PAINT PAVEMENT MARKING - LINE 4'

LOCATION	STATION	TO	STATION	LENGTH (FT)	
C.L.	SKIP - DASH YELLOW		106+50.00	114+87.77 (BK)	210.00
C.L.	SKIP - DASH YELLOW		109+05.49 (AH)	162+24.00	1330.00
C.L.	SOLID YELLOW		136+85.00	149+62.00	1277.00
N.B.	SOLID WHITE		106+50.00	114+87.77 (BK)	837.77
N.B.	SOLID WHITE		109+05.49 (AH)	162+24.00	5318.51
LEVERETT RD	SOLID YELLOW		10+44.00	11+69.00	250.00
S.B.	SOLID WHITE		106+50.00	114+87.77 (BK)	837.77
S.B.	SOLID WHITE		109+05.49 (AH)	162+24.00	5318.51
TOTAL =				15,379.56	FT
USE =				15,380.00	FT

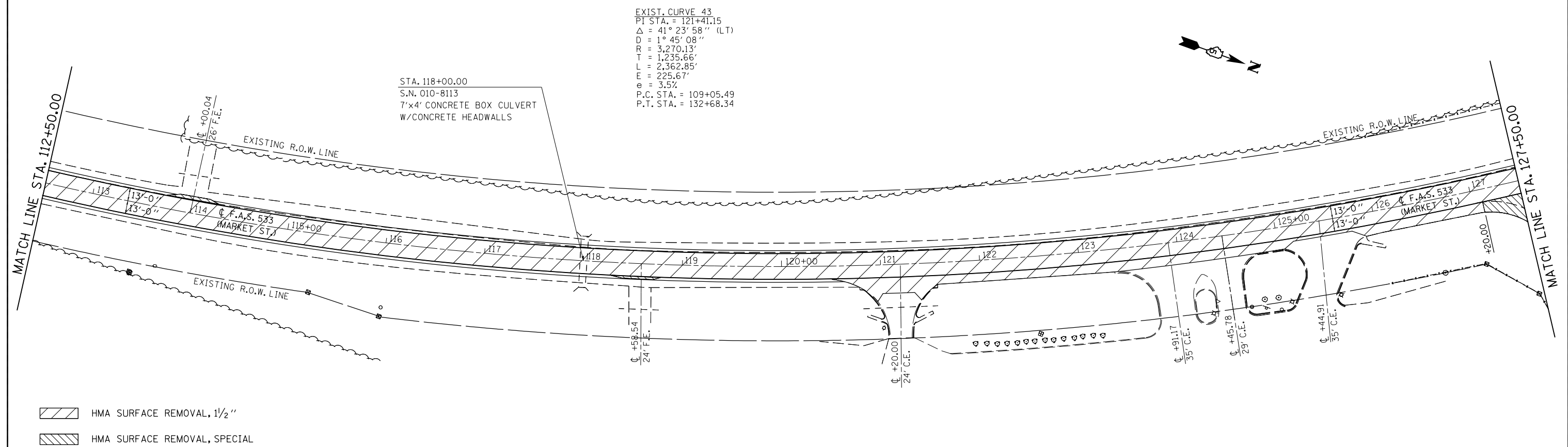
SEC. 24, T. 20 N., R. 8 E., 3RD P.M.



- HMA SURFACE REMOVAL, 1 1/2"
- HMA SURFACE REMOVAL, SPECIAL

SEC. 19, T. 20 N., R. 8 E., 3RD P.M.

SEC. 24, T. 20 N., R. 8 E., 3RD P.M.



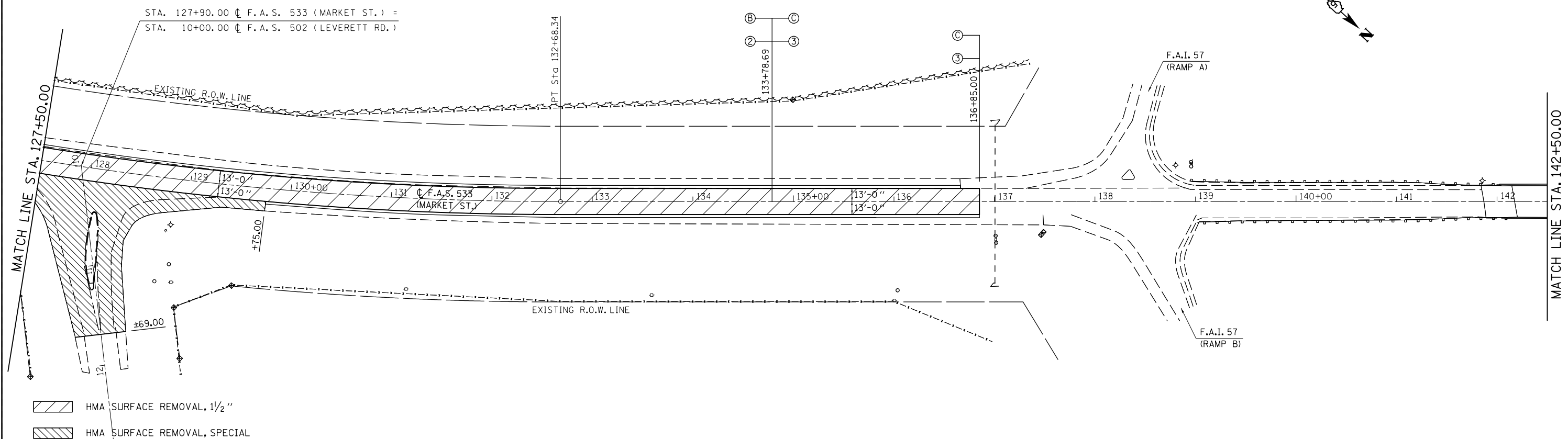
EXIST. CURVE 43
 PI STA. = 121+41.15
 $\Delta = 41^\circ 23' 58''$ (LT)
 $D = 1^\circ 45' 08''$
 $R = 3,270.13'$
 $T = 1,235.66'$
 $L = 2,362.85'$
 $E = 225.67'$
 $e = 3.5\%$
 P.C. STA. = 109+05.49
 P.T. STA. = 132+68.34

STA. 118+00.00
 S.N. 010-8113
 7'x4' CONCRETE BOX CULVERT
 W/CONCRETE HEADWALLS

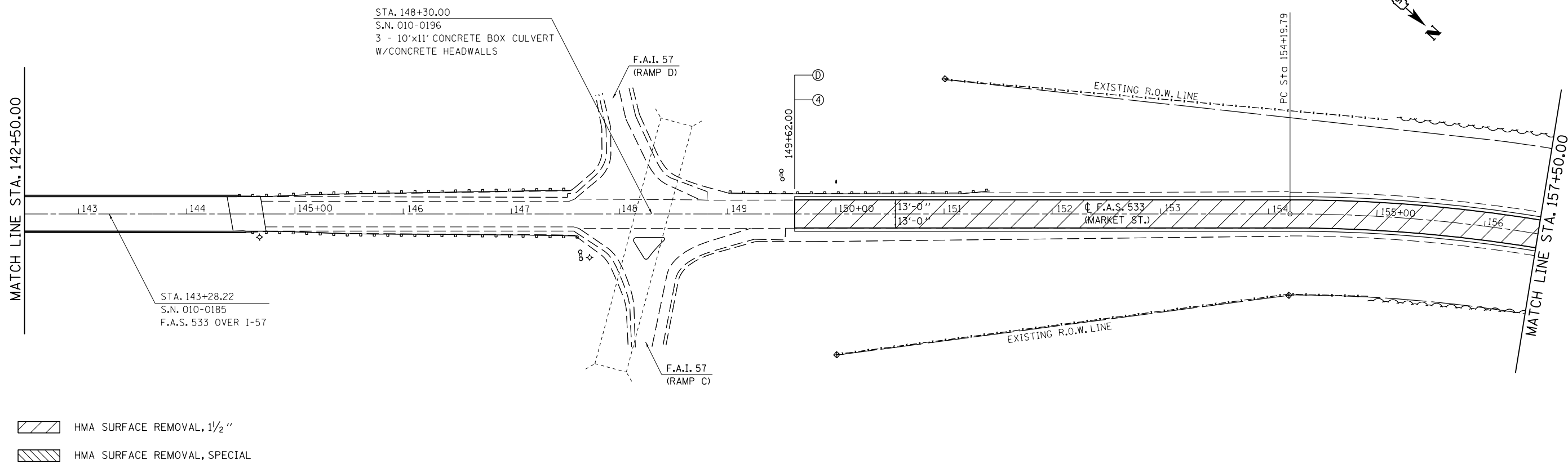
- HMA SURFACE REMOVAL, 1 1/2"
- HMA SURFACE REMOVAL, SPECIAL

FILE NAME =	USER NAME = ppersonbr	DESIGNED -	REVISED -	STATE OF ILLINOIS DEPARTMENT OF TRANSPORTATION	PLAN SHEETS			F.A.S. RTE.	SECTION	COUNTY	TOTAL SHEETS	SHEET NO.	
ci:\pwork\pwork\pwork\personbr\d0249274\0578874-sht-pln.dgn		DRAWN -	REVISED -		SCALE: 1" = 50'	SHEET NO. 1 OF 3 SHEETS	STA. 104+00.00 TO STA. 127+50.00	533	(10-34,HB-5,106)RS-1	CHAMPAIGN	26	14	
		CHECKED -	REVISED -										
		DATE -	REVISED -										

SEC. 24, T. 20 N., R. 8 E., 3RD P.M.



SEC. 24, T. 20 N., R. 8 E., 3RD P.M.



FILE NAME =	USER NAME = ppersonbr	DESIGNED -	REVISED -
ei:\pwork\work\pwork\personbr\d0249274\0570874-sh1-pln.dgn		DRAWN -	REVISED -
	PLOT SCALE = 100.0000' / in.	CHECKED -	REVISED -
	PLOT DATE = 1/27/2012	DATE -	REVISED -

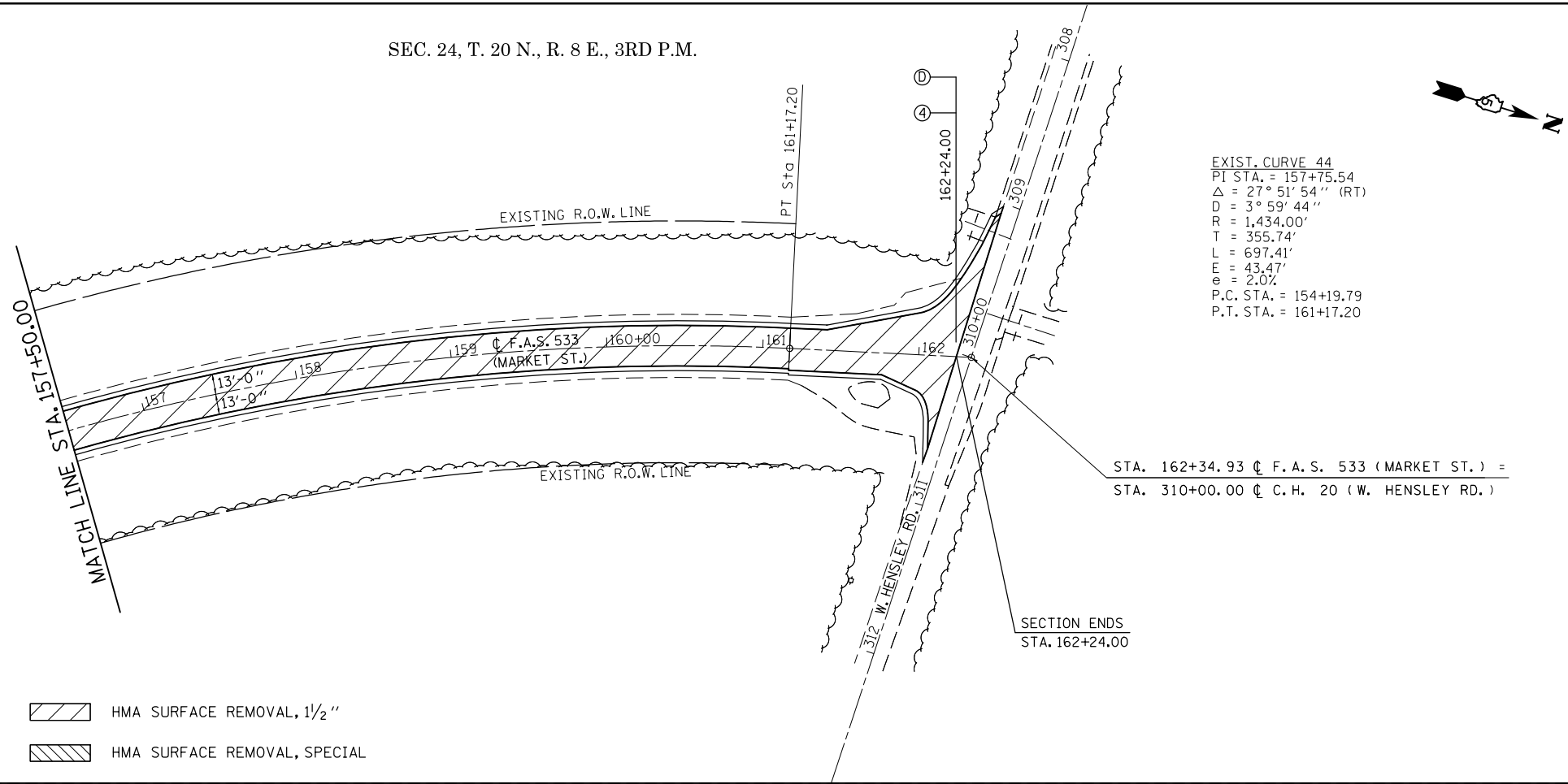
STATE OF ILLINOIS
 DEPARTMENT OF TRANSPORTATION

PLAN SHEETS

SCALE: 1" = 50' SHEET NO. 2 OF 3 SHEETS STA. 127+50.00 TO STA. 157+50.00

F.A.S. RTE.	SECTION	COUNTY	TOTAL SHEETS	SHEET NO.
533	(10-34,HB-5,106)RS-1	CHAMPAIGN	26	15
CONTRACT NO. 70874				
ILLINOIS FED. AID PROJECT				

SEC. 24, T. 20 N., R. 8 E., 3RD P.M.



FILE NAME =	USER NAME = ppersonbr	DESIGNED -	REVISED -
ct:\pw\work\p\pidot\ppersonbr\d0249274\0570874-sh1-pln.dgn		DRAWN -	REVISED -
	PLOT SCALE = 100.0000' / in.	CHECKED -	REVISED -
	PLOT DATE = 1/27/2012	DATE -	REVISED -

STATE OF ILLINOIS
 DEPARTMENT OF TRANSPORTATION

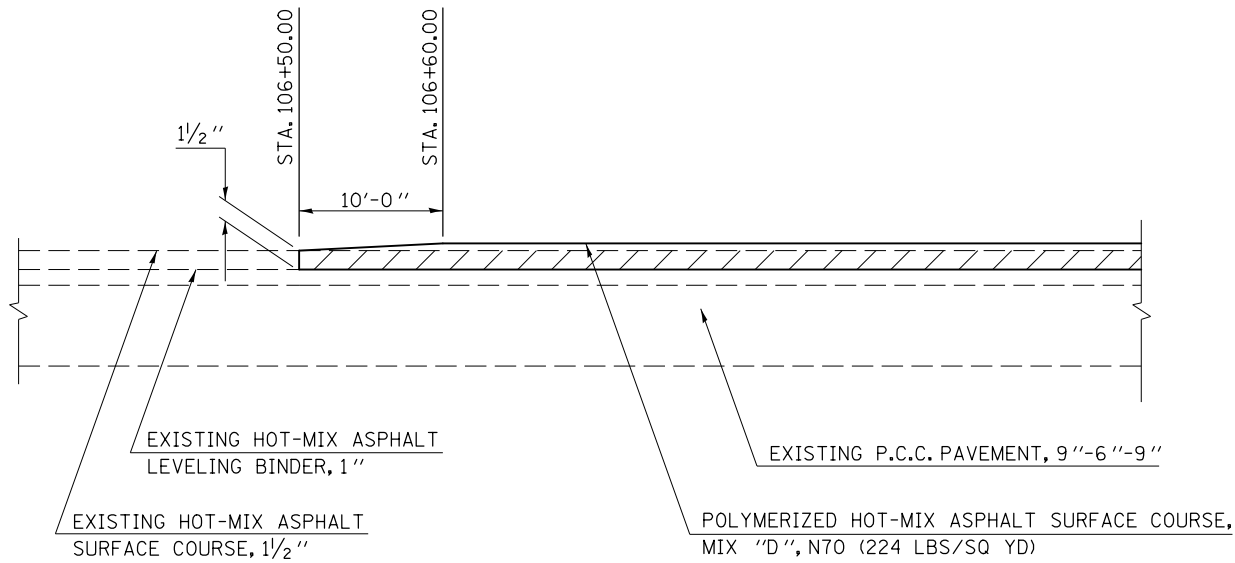
PLAN SHEETS

SCALE: 1" = 50' SHEET NO. 3 OF 3 SHEETS STA. 157+50.00 TO STA. 162+34.93

F.A.S. RTE.	SECTION	COUNTY	TOTAL SHEETS	SHEET NO.
533	(10-34,HB-5,106)RS-1	CHAMPAIGN	26	16
CONTRACT NO. 70874			ILLINOIS FED. AID PROJECT	

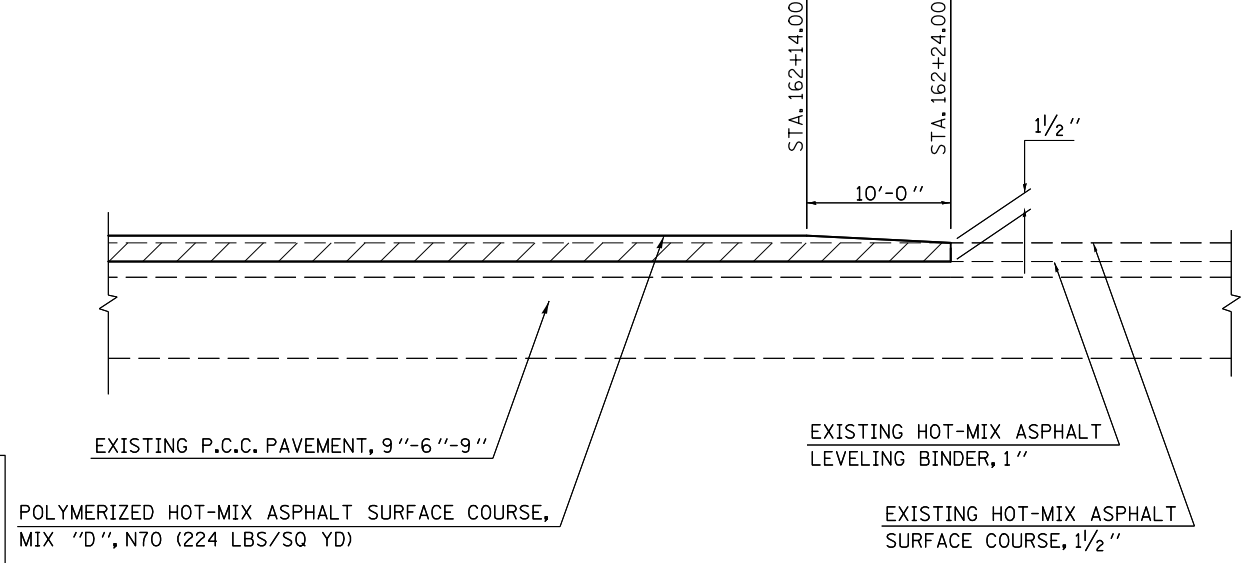
DETAIL FOR MILLING /PAVING TRANSITION AT BEGINNING OF PROJECT

STATION TO STATION
106+50.00 TO 106+60.00



DETAIL FOR MILLING /PAVING TRANSITION AT END OF PROJECT

STATION TO STATION
162+14.00 TO 162+24.00



THE VARIOUS PAY ITEMS REPRESENT THE BEST INFORMATION AVAILABLE FOR COMPLETION OF THE DESIGN PLANS PRIOR TO LETTING. VARIATIONS IN LOCATIONS AND LENGTHS MAY OCCUR. ALL MEASUREMENTS SHALL BE FIELD VERIFIED BY THE ENGINEER PRIOR TO CONSTRUCTION.

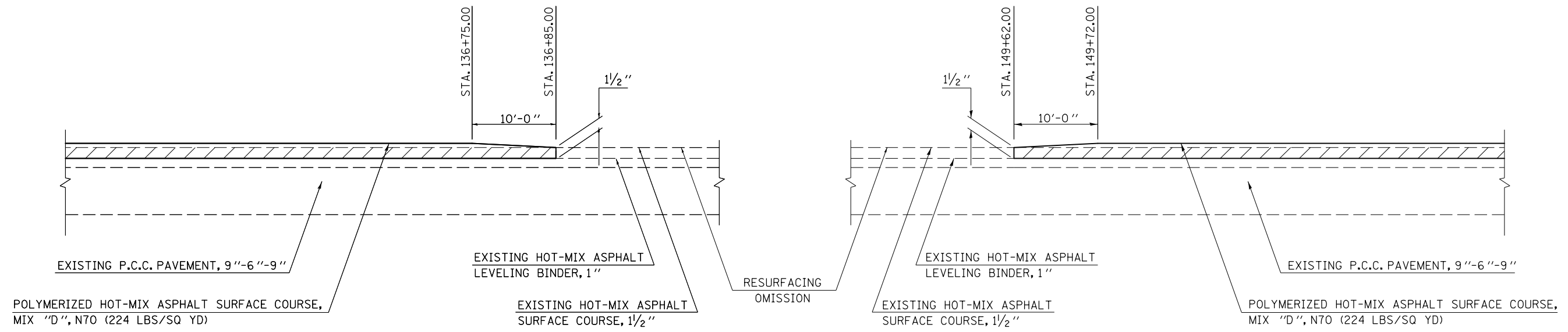
NOT TO SCALE

HOT-MIX ASPHALT SURFACE REMOVAL, 1 1/2" USE A 1:240 TAPER RATE AT THIS LOCATION

HOT-MIX ASPHALT SURFACE REMOVAL, 1 1/2" USE A 1:240 TAPER RATE AT THIS LOCATION

TRANSITION DETAIL AT OMISSION

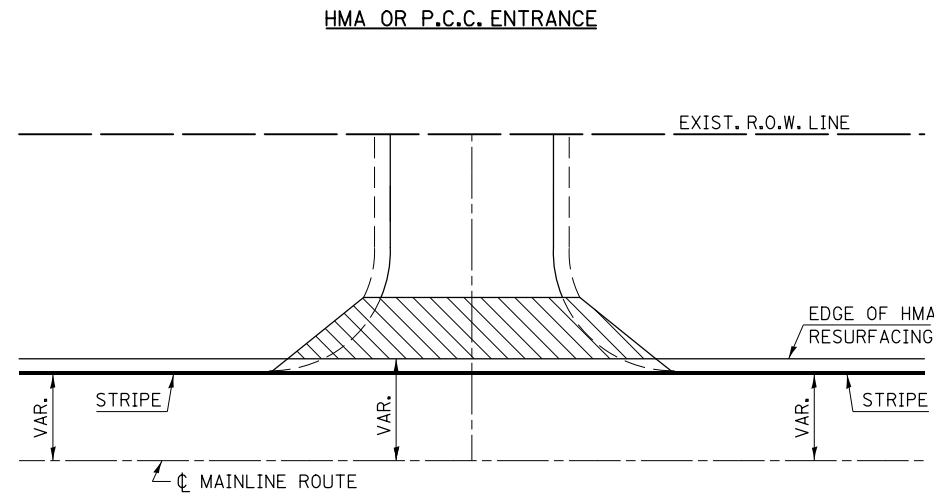
STATION TO STATION
136+85.00 TO 149+62.00



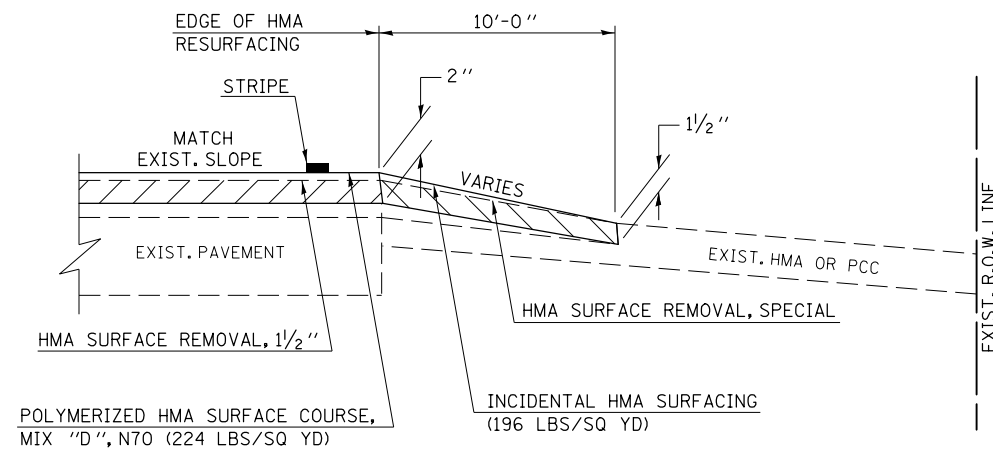
HOT-MIX ASPHALT SURFACE REMOVAL, 1 1/2" USE A 1:240 TAPER RATE AT THIS LOCATION

FILE NAME =	USER NAME = ppersonbr	DESIGNED - SEL	REVISED -	STATE OF ILLINOIS DEPARTMENT OF TRANSPORTATION	MILLING & PAVING TRANSITION DETAILS			F.A.S. RTE.	SECTION	COUNTY	TOTAL SHEETS	SHEET NO.
ci:\pw\work\p\midot\ppersonbr\d0249274\0570874-sh1-details.dgn		DRAWN - BBP	REVISED -		533	(10-34,HB-5,106)RS-1	CHAMPAIGN	26	17	CONTRACT NO. 70874		
PLOT SCALE = 48.0000' / in.		CHECKED -	REVISED -		SCALE: NONE	SHEET NO. 1 OF 1 SHEETS	STA. TO STA.	ILLINOIS FED. AID PROJECT				
PLOT DATE = 1/27/2012		DATE - 03/23/11	REVISED -									

TYPICAL PRIVATE OR COMMERCIAL ENTRANCE DETAIL



TYPICAL APPLICATION

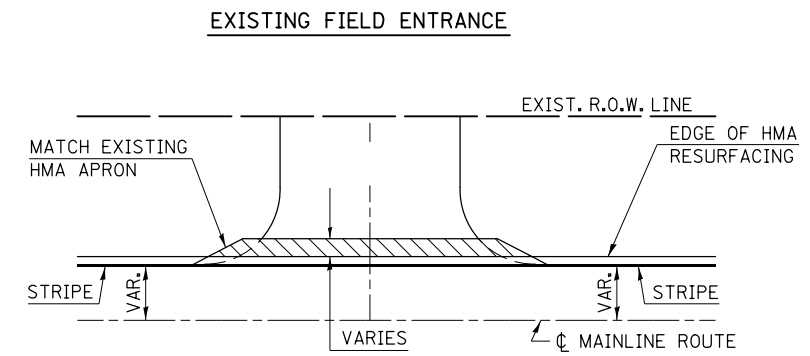


TYPICAL SECTION

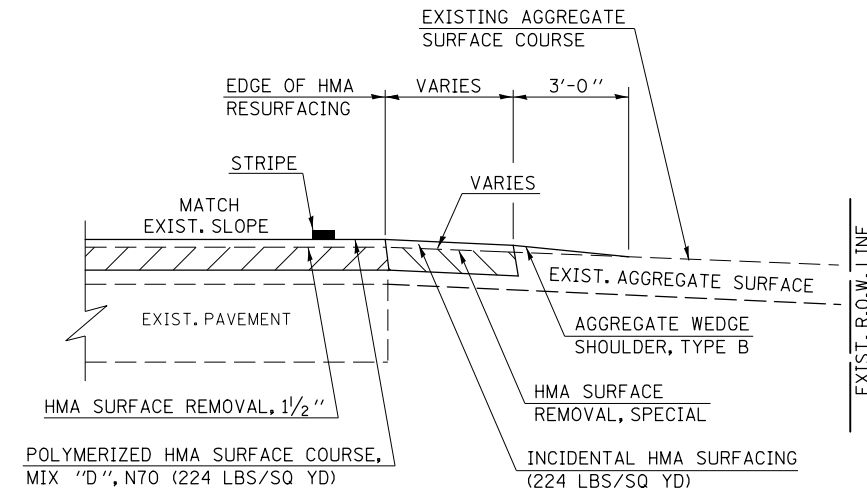
GENERAL NOTES

1. THE EXISTING SURFACE SHALL BE PREPARED IN ACCORDANCE WITH SECTION 408 OF THE STANDARD SPECIFICATIONS.
2. ANY NECESSARY WORK BEHIND THE INCIDENTAL HOT-MIX ASPHALT SURFACING SHALL BE AS SHOWN IN THE PLANS AND/OR AS DIRECTED BY THE ENGINEER.

TYPICAL FIELD ENTRANCE DETAIL



TYPICAL APPLICATION



TYPICAL SECTION

GENERAL NOTES

1. THE EXISTING SURFACE SHALL BE PREPARED IN ACCORDANCE WITH SECTION 408 OF THE STANDARD SPECIFICATIONS.
2. THE INCIDENTAL HOT-MIX ASPHALT SURFACING IS INTENDED TO RESURFACE THE EXISTING ENTRANCES IN THEIR ENTIRETY.
3. ANY NECESSARY WORK BEHIND THE INCIDENTAL HOT-MIX ASPHALT SURFACING SHALL BE AS SHOWN IN THE PLANS AND/OR AS DIRECTED BY THE ENGINEER.

Note: All dimensions are in INCHES (millimeters) unless otherwise shown.

FILE NAME =	USER NAME = ppersonbr	DESIGNED - SEL	REVISED -
ct:\pw\work\pwidot\ppersonbr\d0249274\0570874-sh1-details.dgn		DRAWN - BBP	REVISED -
	PLOT SCALE = 40.0000' / in.	CHECKED -	REVISED -
	PLOT DATE = 1/27/2012	DATE - 03/03/11	REVISED -

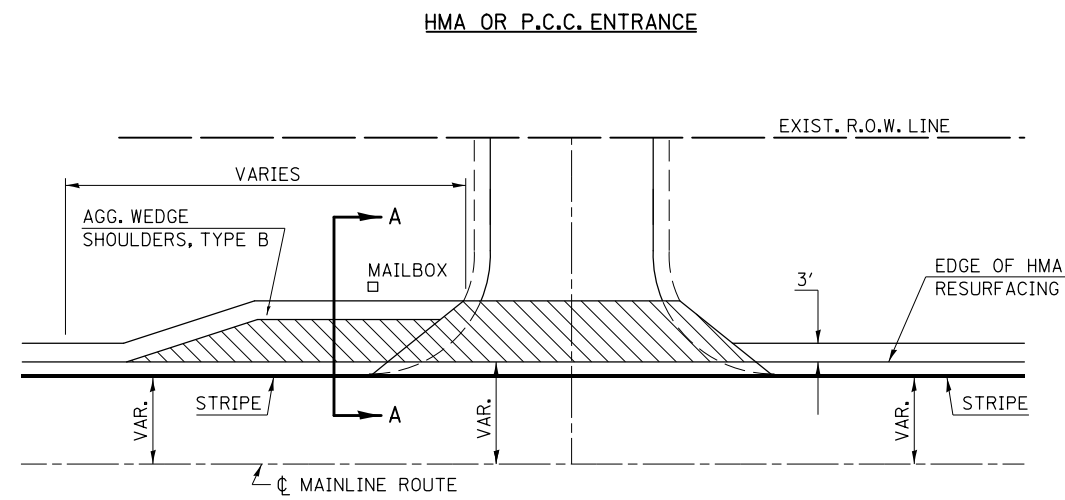
STATE OF ILLINOIS
DEPARTMENT OF TRANSPORTATION

PRIVATE OR COMMERCIAL
& FIELD ENTRANCE DETAILS

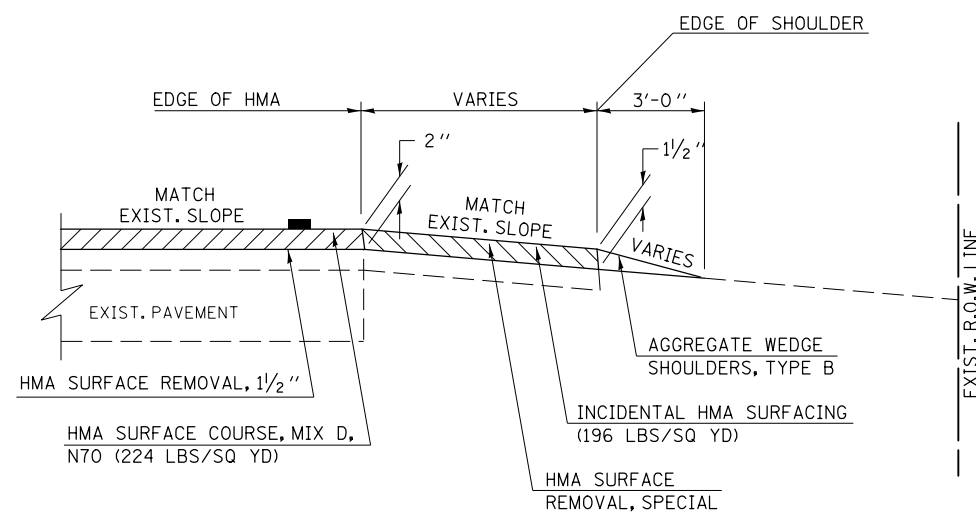
SCALE: NONE SHEET NO. 1 OF 1 SHEETS STA. TO STA.

F.A.S. RTE.	SECTION	COUNTY	TOTAL SHEETS	SHEET NO.
533	(10-34,HB-5,106)RS-1	CHAMPAIGN	26	19
FED. ROAD DIST. NO. ILLINOIS FED. AID PROJECT			CONTRACT NO. 70874	

TYPICAL MAILBOX TURNOUT DETAIL



TYPICAL APPLICATION



SECTION A-A

GENERAL NOTES

1. THE EXISTING SURFACE SHALL BE PREPARED IN ACCORDANCE WITH SECTION 408 OF THE STANDARD SPECIFICATIONS.
2. THE INCIDENTAL HOT-MIX ASPHALT SURFACING IS INTENDED TO RESURFACE THE EXISTING MAILBOX TURNOUTS IN THEIR ENTIRETY.
3. ANY NECESSARY WORK BEHIND THE INCIDENTAL HOT-MIX ASPHALT SURFACING SHALL BE AS SHOWN IN THE PLANS AND/OR AS DIRECTED BY THE ENGINEER.

FILE NAME =	USER NAME = ppersonbr	DESIGNED - SEL	REVISED -
ct:\pw\work\p\pidot\ppersonbr\d0249274\0570874-sh1-details.dgn		DRAWN - BBP	REVISED -
	PLOT SCALE = 40.0000' / in.	CHECKED -	REVISED -
	PLOT DATE = 1/27/2012	DATE - 01/26/12	REVISED -

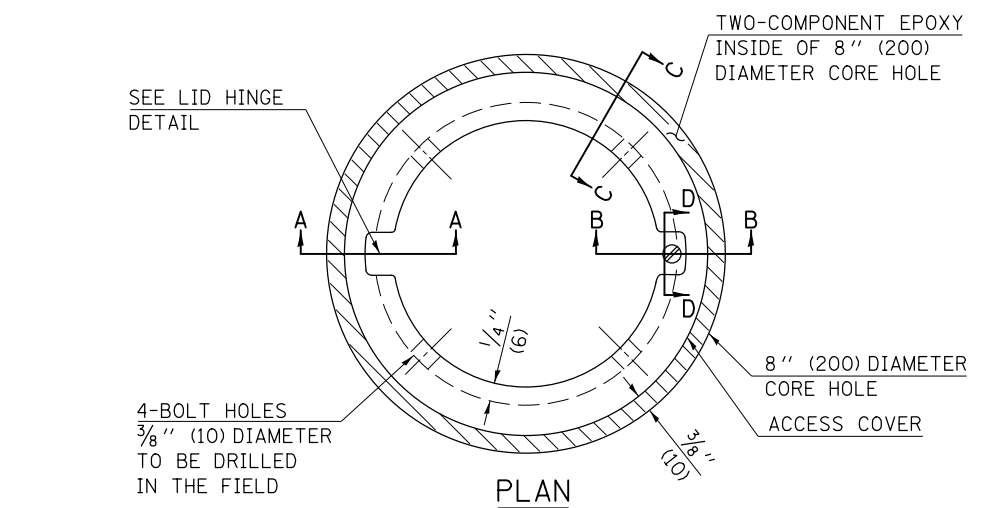
STATE OF ILLINOIS
DEPARTMENT OF TRANSPORTATION

MAILBOX TURNOUT

SCALE: NA SHEET NO. OF SHEETS STA. TO STA.

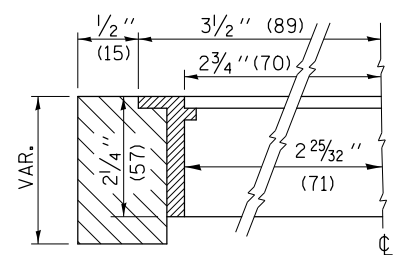
F.A.P. RTE.	SECTION	COUNTY	TOTAL SHEETS	SHEET NO.
804	(10-34,HB-5,106)RS-1	CHAMPAIGN	26	20
FED. ROAD DIST. NO. ILLINOIS FED. AID PROJECT			CONTRACT NO. 70874	

TO BE INSTALLED IN ALL PAVEMENT TYPES FOR PRESERVING PERMANENT SURVEY MARKERS (PI'S, PT'S, PC'S, POC'S, & POT'S) AND LAND SURVEY MONUMENTS (SECTION OR SUBSECTION CORNERS)

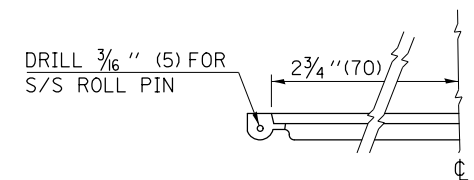
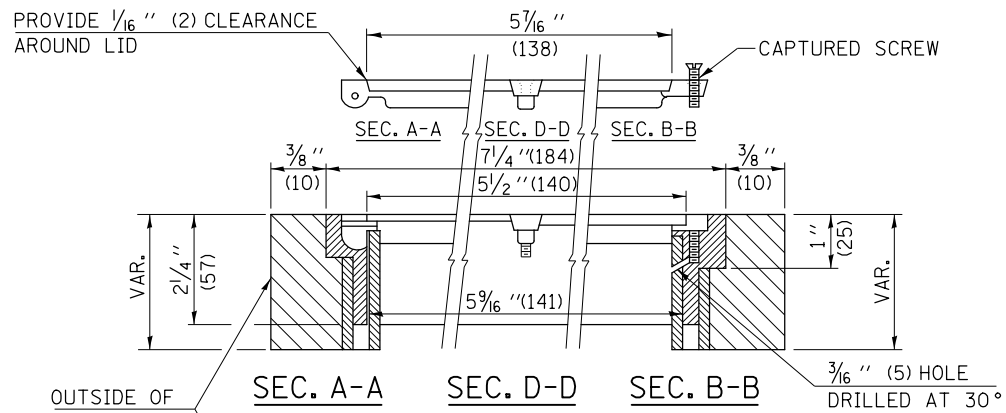


LEGEND

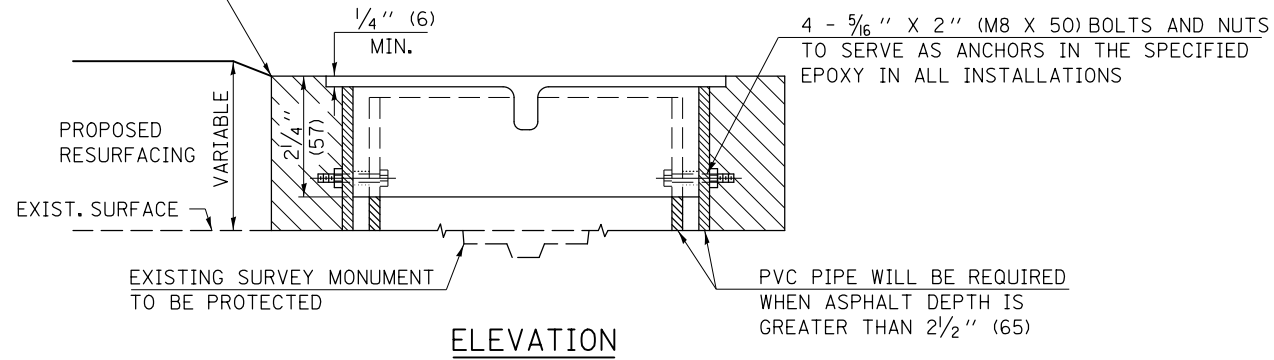
- ALUMINUM CASTING
- 5" (125) OR 6" (150) P.V.C. PIPE
- TWO-COMPONENT EPOXY



SECTION C-C



LID HINGE DETAIL



ELEVATION

SPECIFICATIONS FOR ACCESS COVER FOR USE WITH SURVEY MARKER VAULT(S) AND SURVEY MARKER COVER ASSEMBLY(S): THE ACCESS COVER WILL BE CAST FROM A SPECIAL ALUMINUM ALLOY THAT IS COMPARABLE TO BRONZE IN HARDNESS. THE ACCESS COVER SHALL BE SPECIALLY ENGINEERED AND DESIGNED TO PROVIDE A SNUG FIT, INCORPORATING EQUIDISTANT LOCKING RIDGES, INSIDE A STANDARD 6" (150 mm) DIAMETER, OR OUTSIDE A STANDARD 5" (125 mm) DIAMETER, SCHEDULE 40 PVC PIPE. THE ACCESS COVER SHALL HAVE SPECIAL UNIFORM 1" (25 mm) THICK TOP SURFACE TO PERMIT INFORMATION TO BE EASILY MACHINE-STAMPED INTO IT. THE ACCESS COVER SHALL INCLUDE A STAINLESS CAPTURED SCREW AND AN OPPOSING RECESSED HINGE ASSEMBLY AS ITS LOCKING MECHANISM. THE ACCESS COVER SHALL INCORPORATE A SPECIAL ACCESS HOLE FOR CLEANING AND DRAINAGE, DRILLED AT 30° INSIDE THE RING OF THE ACCESS COVER, TO THE DRILLED AND TAPPED HOLE PROVIDED FOR THE STAINLESS CAPTURED SCREW. COMPOSITION: ALUMINUM 92-93%; MAGNESIUM 6.5-7.5%. STRENGTH: YIELD - 19,000-21,000 PSI (131-145 MPa); TENSILE - 38,000-44,000 PSI (262-303 MPa); ELONGATION - 10-15% IN 2" (50 mm). SPECIFICATIONS: ALLOY 535.0; QQ-A-601Es. NO EXCEPTIONS.

BILL OF MATERIAL	
ALUMINUM CASTING OF THE DIMENSIONS AND SPECIFICATIONS SHOWN OR OTHER SUBJECT TO ENGINEER'S APPROVAL OF SHOP DRAWINGS,	
4 EACH - 5/16" X 2" (M8 X 50) BOLTS WITH NUTS, EPOXY,	
5" OR 6" (125 mm OR 150 mm) DIAMETER P.V.C. PIPE, SCHEDULE 40 (WHEN REQUIRED).	

GENERAL NOTES

1. WORK SHALL NOT START ON THIS ITEM UNTIL THE FINAL LIFT OF SURFACE HAS BEEN COMPLETED.
2. THE SURVEY MONUMENT COVER ASSEMBLY SHALL BE CENTERED ABOVE THE SURVEY MONUMENT TO BE PROTECTED.
3. MODIFICATION OF THE ALUMINUM CASTING SHALL BE DONE BY GRINDING OR SAWING WHEN HEIGHT REDUCTION IS REQUIRED.
4. ALL SURVEY MONUMENT COVER ASSEMBLIES SHALL BE PLACED 1/4" (6 mm) ± BELOW THE FINAL SURFACE.
5. ALUMINUM CASTING SHALL BE PLACED OVER A 5" (125 mm) P.V.C. PIPE OR INSIDE OF A 6" (150 mm) P.V.C. PIPE WHEN AN INCREASE IN HEIGHT IS REQUIRED.
6. THE CASTING SHALL BE ANCHORED IN THE 8" (200 mm) DIAMETER CORE HOLE WITH TWO-COMPONENT EPOXY CONFORMING TO APPLICABLE PORTIONS OF ARTICLE 1025.01 OF THE STANDARD SPECIFICATIONS.
7. THIS WORK WILL BE PAID FOR AT THE CONTRACT UNIT PRICE EACH FOR SURVEY MONUMENT COVER ASSEMBLY WHICH PRICE SHALL INCLUDE ALL LABOR AND MATERIAL AS SPECIFIED INCLUDING CORING THE NEW PAVEMENT SURFACE AND EPOXY. NO ADDITIONAL COMPENSATION WILL BE ALLOWED.
8. THE 8" (200 mm) DIAMETER CORE HOLE SHALL BE SUBJECT TO THE APPROVAL OF THE ENGINEER.

Note: All dimensions are in INCHES (millimeters) unless otherwise shown.

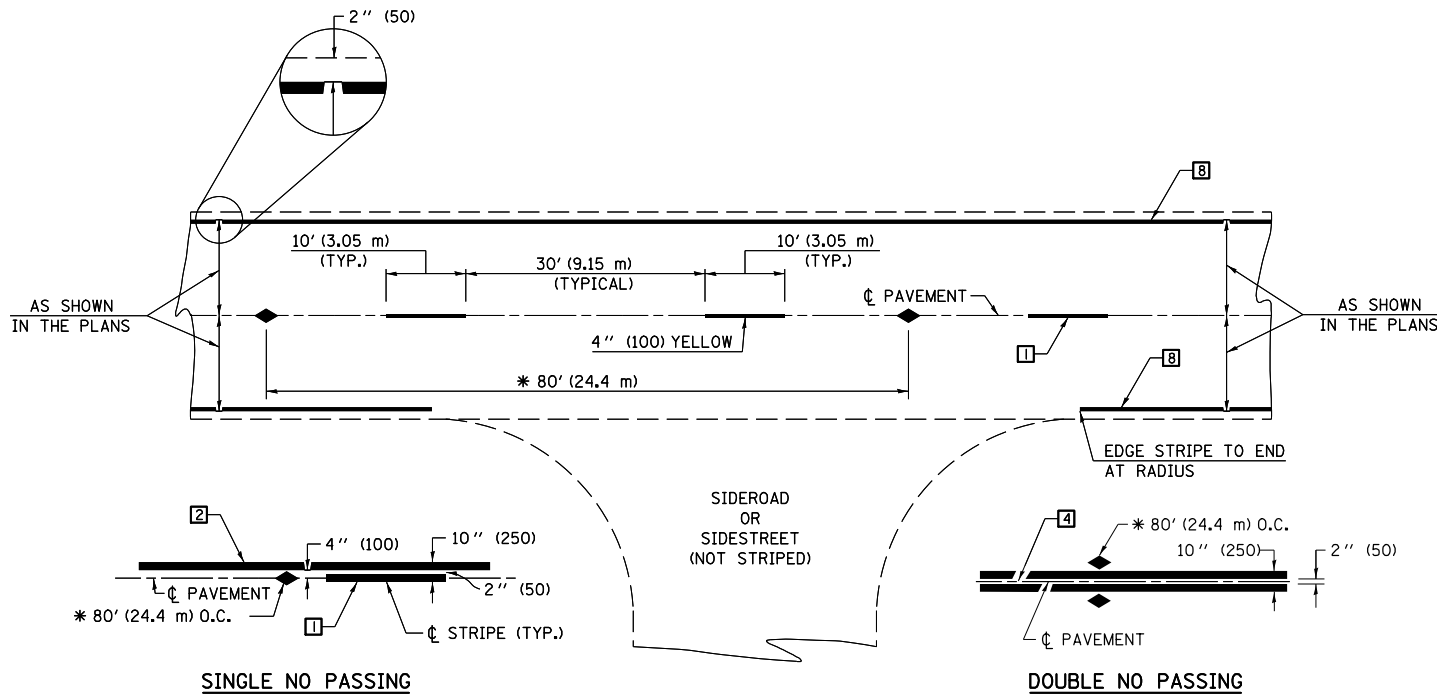
FILE NAME =	USER NAME = ppersonbr	DESIGNED -	REVISED - 11/06
ci:\pw\work\p\pidot\personbr\d0249274\0578874-sh1-details.dgn		DRAWN -	REVISED -
	PLOT SCALE = 40.0000' / in.	CHECKED -	REVISED -
	PLOT DATE = 1/27/2012	DATE -	REVISED -

**STATE OF ILLINOIS
DEPARTMENT OF TRANSPORTATION**

SURVEY MONUMENT COVER ASSEMBLY

SCALE: SHEET NO. 1 OF 1 SHEETS STA. TO STA.

DISTRICT 5 DETAIL NO. Z0070100			
F.A.S. RTE.	SECTION	COUNTY	TOTAL SHEETS
533	(10-34,HB-5,106)RS-1	CHAMPAIGN	26
			SHEET NO. 22
			CONTRACT NO. 70874
FED. ROAD DIST. NO. ILLINOIS FED. AID PROJECT			



* REDUCE TO 40' (12.2 m) O.C. ON CURVES WITH POSTED OR ADVISORY SPEEDS OF 45 mph (70 km/h) OR LESS.

TWO LANE/TWO WAY

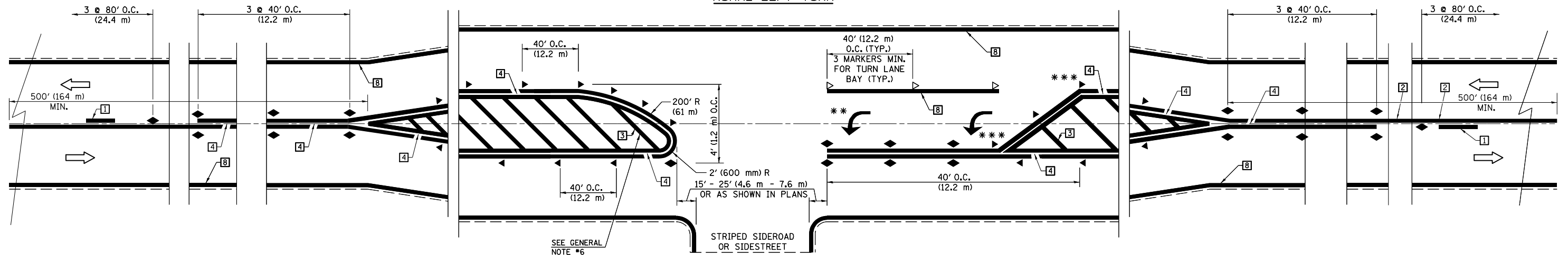
TYPICAL PAVEMENT MARKING LEGEND

- 1 4" (100) SKIP-DASH (YELLOW)
- 2 4" (100) SOLID (YELLOW)
- 3 12" (300) DIAGONAL (YELLOW)
- 4 4" (100) DOUBLE YELLOW (NARROW)
- 5 RESERVED
- 6 RESERVED
- 7 4" (100) SKIP-DASH (WHITE)
- 8 4" (100) SOLID (WHITE)
- 9 12" (300) DIAGONAL (WHITE)
- 10 6" (150) SOLID (WHITE)
- 11 24" (600) STOP BAR (WHITE)
- 12 8" (200) SOLID (WHITE)
- 13 4" (100) LANE LINE EXTENSIONS (WHITE)
- 14 4" (100) PARKING WHITE

TYPICAL PAVEMENT MARKERS LEGEND

- ◆ TWO-WAY AMBER MARKER
- ▶ ONE-WAY AMBER MARKER
- ▷ ONE-WAY CRYSTAL MARKER

RURAL LEFT TURN



*** REDUCE SPACING IF NECESSARY TO ASSURE MARKERS AT CORNER POINTS.

** TURN ARROWS SHALL BE PLACED AS SHOWN ON SHEET #2.

Note: All dimensions are in INCHES (millimeters) unless otherwise shown.

DISTRICT 5 DETAIL NO. 7800AAA

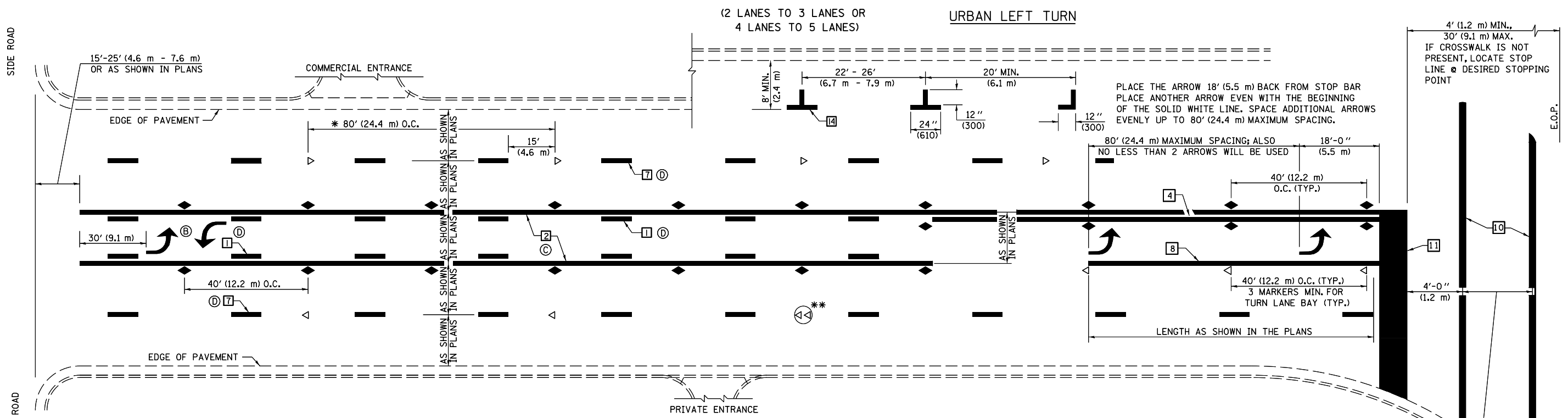
FILE NAME =	USER NAME = piersonbr	DESIGNED -	REVISED - 11/06
ci:\pw\work\p\idot\piersonbr\d0249274\0578874-sh1-details.dgn		DRAWN -	REVISED - 09/2009 - KJT
	PLOT SCALE = 48.0000' / in.	CHECKED -	REVISED -
	PLOT DATE = 1/27/2012	DATE -	REVISED -

**STATE OF ILLINOIS
DEPARTMENT OF TRANSPORTATION**

**PAVEMENT MARKING AND MARKERS
(RURAL & URBAN APPLICATIONS)**

SCALE: SHEET NO. 1 OF 4 SHEETS STA. TO STA.

F.A.S. RTE.	SECTION	COUNTY	TOTAL SHEETS	SHEET NO.
533	(10-34,HB-5,106)RS-1	CHAMPAIGN	26	23
CONTRACT NO. 70874				
FED. ROAD DIST. NO. ILLINOIS FED. AID PROJECT				

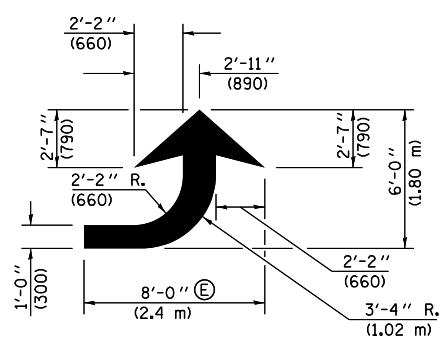


* REDUCE TO 40 FEET (12.2 METERS) ON CENTER ON CURVES WHERE ADVISORY SPEEDS ARE 10 MPH (15 km/h) LOWER THAN POSTED SPEEDS.

** DOUBLE LANE LINE MARKERS SHALL BE SPECIFIED AND SPACED AS SHOWN IN HIGHWAY STANDARD 781001 FOR MULTI-LANE DIVIDED AND UNDIVIDED HIGHWAYS.

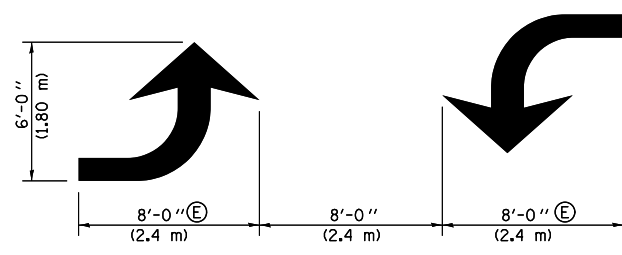
GENERAL NOTES:

- ⓑ TURN ARROW PAIRS SHALL BE PLACED AT 250' (75 m) INTERVALS AND SHALL BE EVENLY SPACED BETWEEN BOTH ENDS OF THE BIDIRECTIONAL LEFT TURN LANE.
- ⓒ THE SOLID YELLOW PAVEMENT MARKINGS [2] SHOULD GENERALLY START OR END NEAR THE RADIUS POINT OF EACH STREET RETURN EXCEPT WHERE ONE OR BOTH ENDS WOULD INCLUDE STOP BARS.
- ⓓ THE SKIP-DASH PAVEMENT MARKINGS [1] OR [7] SHOULD BE CENTERED BETWEEN BOTH ENDS OF EACH CITY BLOCK AND SHALL BE PLACED SO THEY LINE UP ACROSS FROM EACH OTHER. SEE EXAMPLE ON SHEET 2 OF 3.
- ⓔ USE LARGE ARROW SIZE FOR BOTH RURAL AND URBAN LOCATIONS. (SEE LAST PAGE OF SECTION 780x FOR SYMBOLS TABLE)



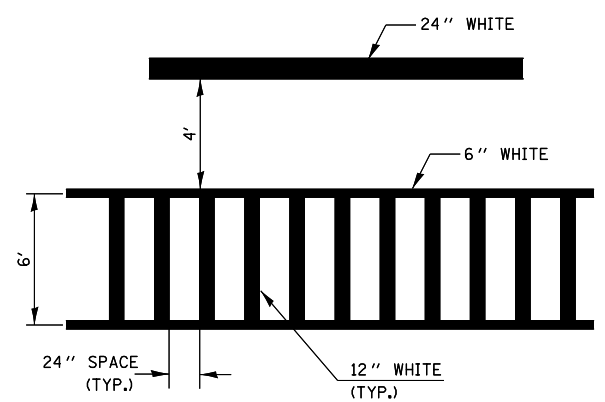
LEFT ARROW

REVERSE FOR RIGHT ARROW
AREA = 15.6 SQ. FT. (1.47 m²)
(WHITE)

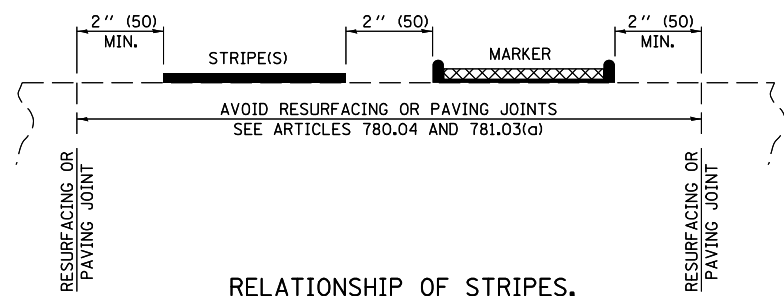


TYPICAL DOUBLE TURN ARROWS (WHITE)

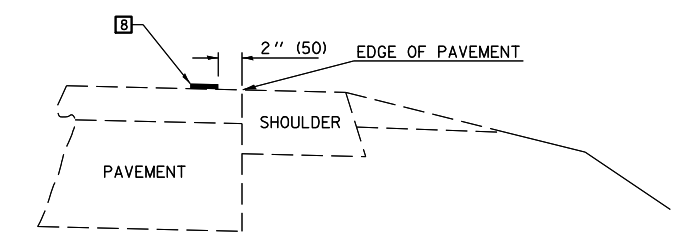
BLOOMINGTON-NORMAL CITY LIMITS ONLY



TYPICAL SPACING FOR CROSSWALKS & STOP BARS



RELATIONSHIP OF STRIPES, MARKERS AND JOINTS

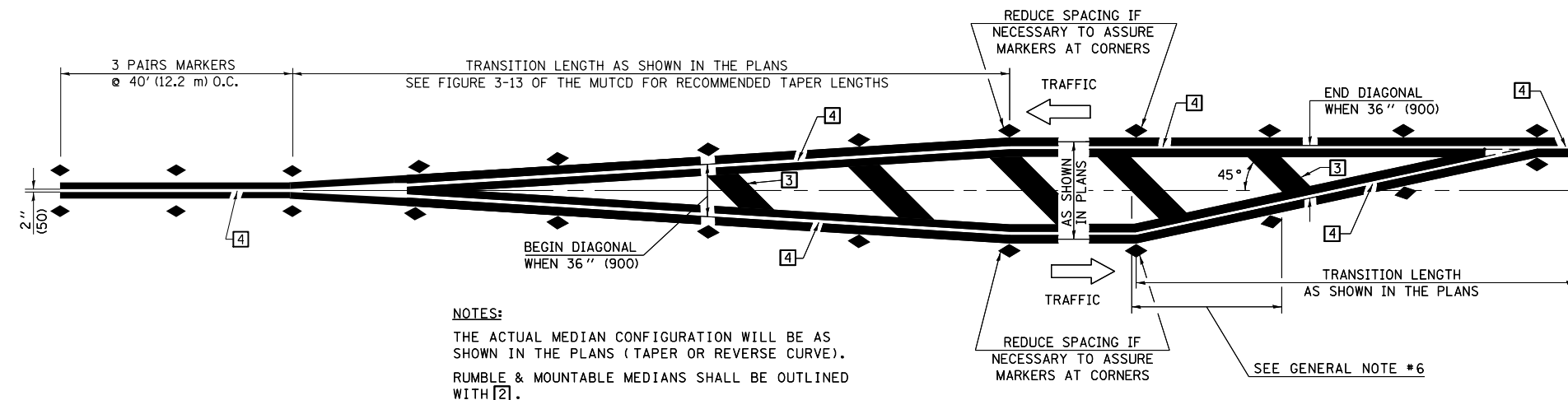


RELATIONSHIP OF EDGE LINE TO EDGE OF PAVEMENT (SAFETY SHOULDER OR PAVED SURFACE) SEE ARTICLE 780.04

CROSSWALK WIDTH 6'-0" (1.8 m) OR AS SHOWN IN THE PLANS

Note: All dimensions are in INCHES (millimeters) unless otherwise shown.

FILE NAME =	USER NAME = ppersonbr	DESIGNED -	REVISED - 11/06	STATE OF ILLINOIS DEPARTMENT OF TRANSPORTATION	PAVEMENT MARKING AND MARKERS (RURAL & URBAN APPLICATIONS)	F.A.S. RTE.	SECTION	COUNTY	TOTAL SHEETS	SHEET NO.	
ci:\pw\work\p\pidot\ppersonbr\d0249274\0578874-sh1-details.dgn	78874-sh1-details.dgn	DRAWN -	REVISED - 09/2009 - KJT			533	(10-34,HB-5,106)RS-1	CHAMPAIGN	26	24	
	PLOT SCALE = 48.0000' / in.	CHECKED -	REVISED -			CONTRACT NO. 70874					
	PLOT DATE = 1/27/2012	DATE -	REVISED -			FED. ROAD DIST. NO. ILLINOIS FED. AID PROJECT					

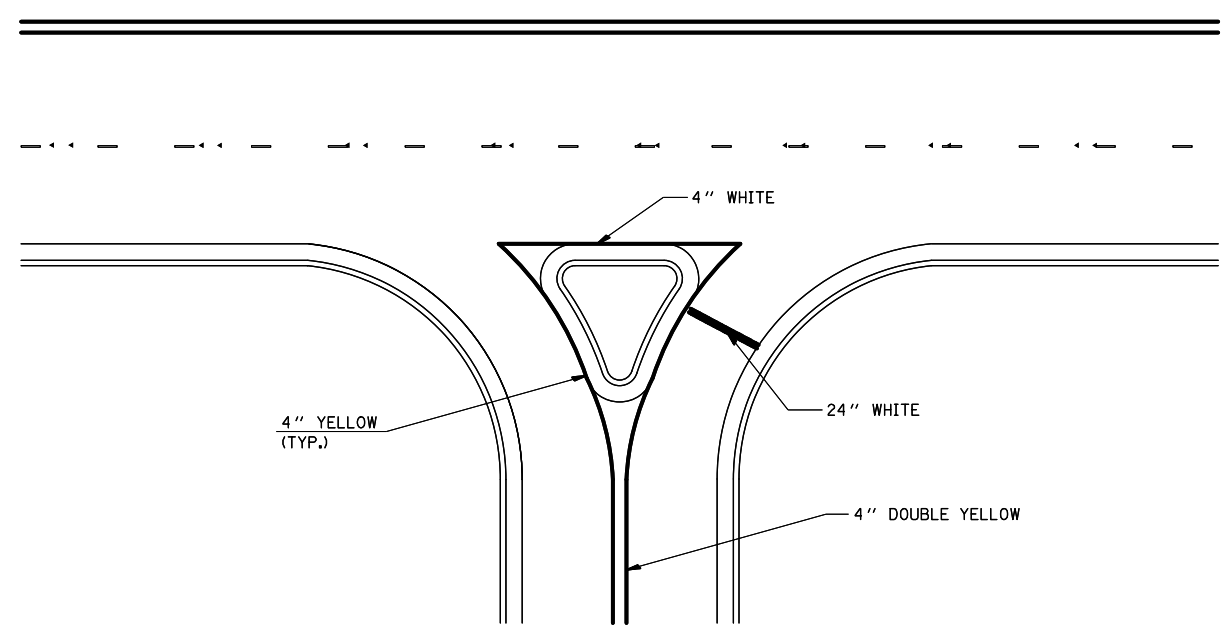


NOTES:
 THE ACTUAL MEDIAN CONFIGURATION WILL BE AS SHOWN IN THE PLANS (TAPER OR REVERSE CURVE).
 RUMBLE & MOUNTABLE MEDIANS SHALL BE OUTLINED WITH [2].

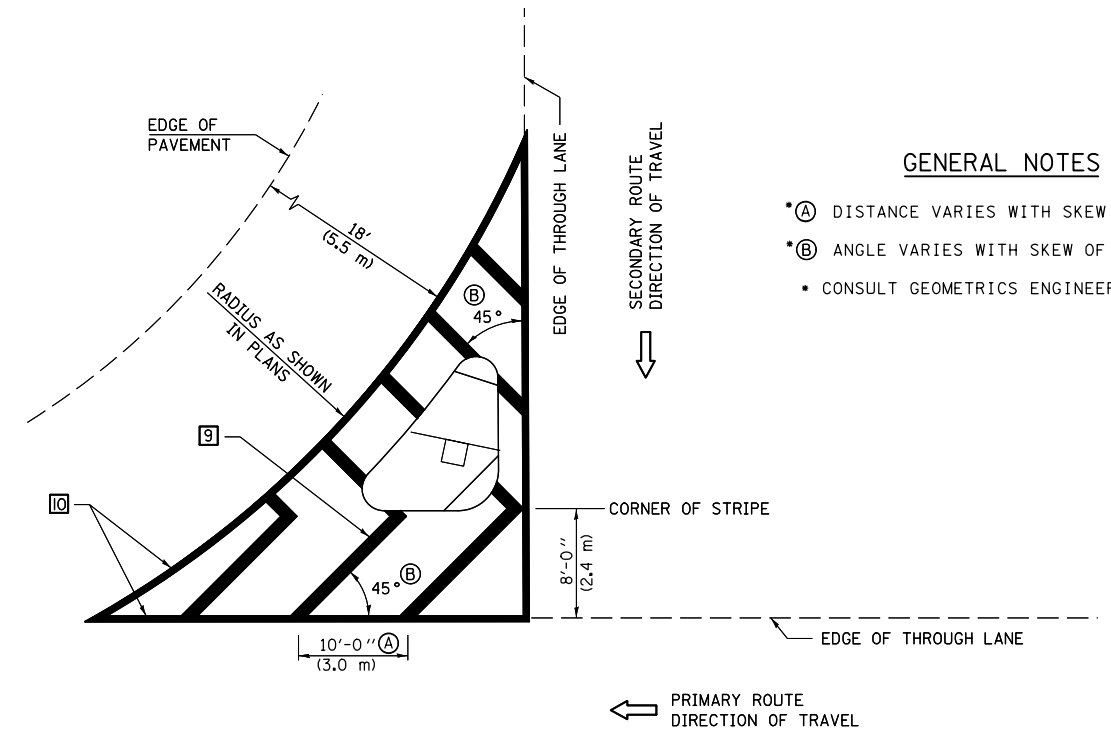
TYPICAL MEDIAN TRANSITIONS

GENERAL NOTES

1. WHEN MEDIANS ARE PRESENT, PAVEMENT MARKINGS ARE TO BE PLACED ADJACENT TO MEDIANS.
2. SOME OF THE INFORMATION INCLUDED WITH THIS DETAIL MAY NOT BE APPLICABLE TO THIS IMPROVEMENT.
3. PAVEMENT MARKINGS ARE TO BE EXTENDED THROUGH OMISSIONS WHEN APPLICABLE.
4. A STRIPING KEY IS AVAILABLE ELSEWHERE AND SHALL BE SHOWN WHERE THE QUANTITIES ARE LISTED.
5. FINAL PAVEMENT MARKINGS SHALL BE IN PLACE PRIOR TO PLACING ANY RAISED REFLECTIVE PAVEMENT MARKERS.
6. THE FOLLOWING CRITERIA SHALL BE USED FOR SELECTING THE DIAGONAL PAVEMENT MARKING SPACING,
 < 30 MPH USE 15' (< 50 km/h USE 4.5 m)
 30-45 MPH USE 20' (50-75 km/h USE 6.0 m)
 > 45 MPH USE 30' (> 75 km/h USE 9.0 m)



RIGHT IN - RIGHT OUT ACCESS



GENERAL NOTES

- (A) DISTANCE VARIES WITH SKEW OF INTERSECTION.
- (B) ANGLE VARIES WITH SKEW OF INTERSECTION.
- CONSULT GEOMETRICS ENGINEER

ISLAND

Note: All dimensions are in INCHES (millimeters) unless otherwise shown.

FILE NAME =	USER NAME = ppersonbr	DESIGNED -	REVISED - 11/06
ct:\pwork\pwork\personbr\d0249274\0570874-sh1-details.dgn		DRAWN -	REVISED - 09/2009 - KJT
	PLOT SCALE = 40.0000' / in.	CHECKED -	REVISED -
	PLOT DATE = 1/27/2012	DATE -	REVISED -

**STATE OF ILLINOIS
 DEPARTMENT OF TRANSPORTATION**

**PAVEMENT MARKING AND MARKERS
 (RURAL & URBAN APPLICATIONS)**

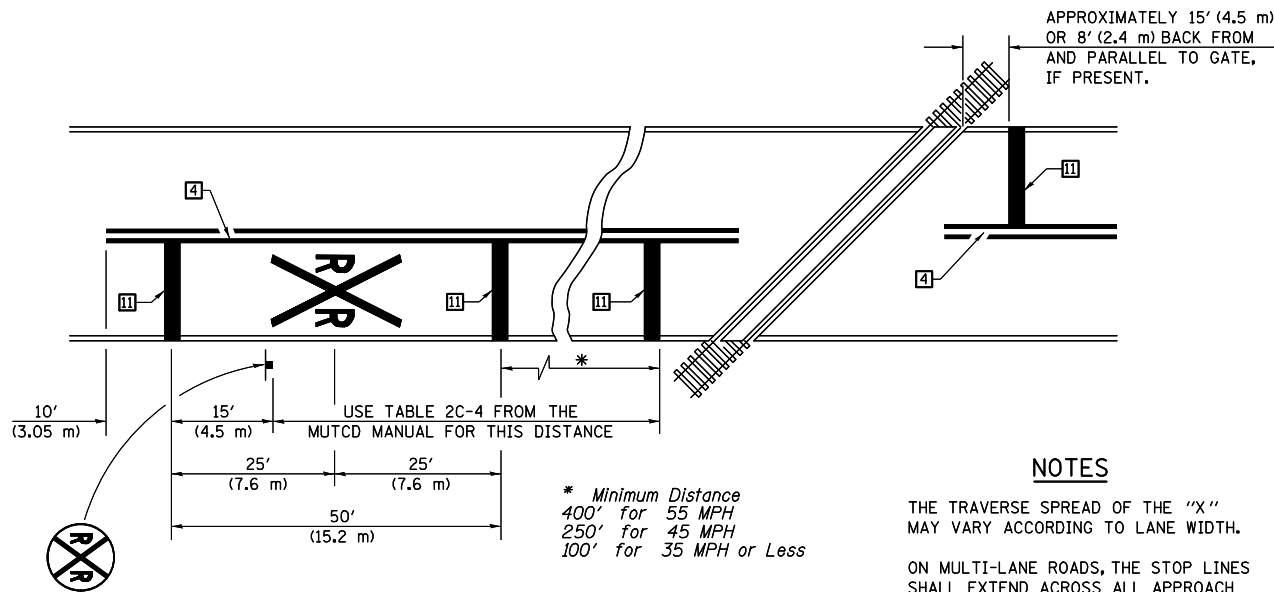
SCALE: SHEET NO. 3 OF 4 SHEETS STA. TO STA.

DISTRICT 5 DETAIL NO. 7800AAA

F.A.S. RTE.	SECTION	COUNTY	TOTAL SHEETS	SHEET NO.
533	(10-34,HB-5,106)RS-1	CHAMPAIGN	26	25
FED. ROAD DIST. NO. ILLINOIS FED. AID PROJECT			CONTRACT NO. 70874	

RAILROAD CROSSING WITH INTERCONNECT ONLY

RAILROAD CROSSING WITH INTERCONNECT AND PRE-SIGNALS



PAVEMENT MARKINGS AT RAILROAD-HIGHWAY GRADE CROSSING

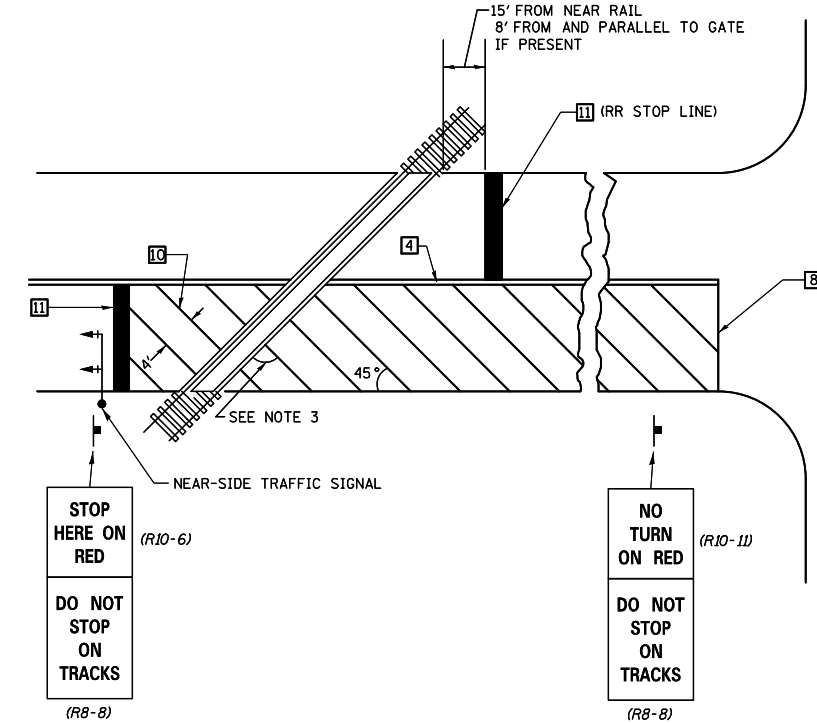
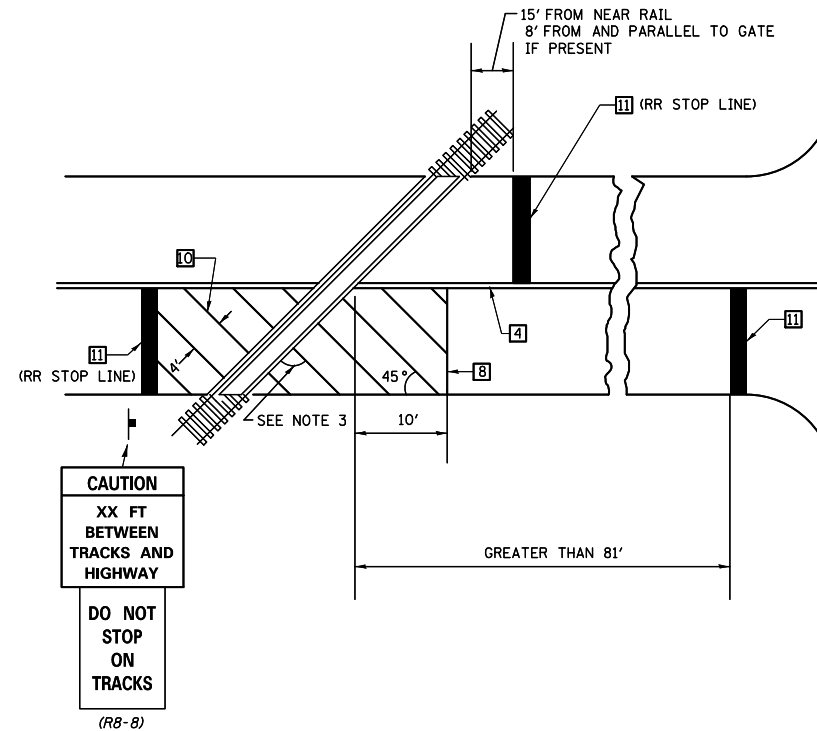
NOTES

APPROXIMATELY 15' (4.5 m) OR 8' (2.4 m) BACK FROM AND PARALLEL TO GATE, IF PRESENT.

THE TRAVERSE SPREAD OF THE "X" MAY VARY ACCORDING TO LANE WIDTH.

ON MULTI-LANE ROADS, THE STOP LINES SHALL EXTEND ACROSS ALL APPROACH LANES AND SEPARATE RXR SYMBOLS SHALL BE PLACED ADJACENT TO EACH OTHER IN EACH LANE.

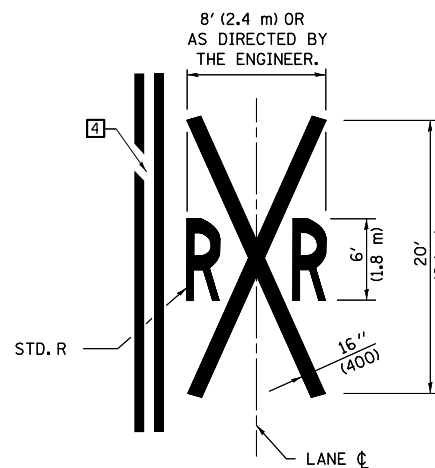
WHEN THE PAVEMENT MARKING SYMBOL IS USED, A PORTION OF THE SYMBOL SHOULD BE LOCATED DIRECTLY ADJACENT TO THE ADVANCE WARNING SIGN (W10-1) AS PLACED BY TABLE II-1, CONDITION B OF THE MUTCD.



SUPPLEMENTAL PAVEMENT MARKING TREATMENT FOR RAILROAD-HIGHWAY GRADE CROSSING

GENERAL NOTES

- SUPPLEMENTAL PAVEMENT MARKINGS TO BE INSTALLED ONLY ON APPROACHES TO INTERSECTIONS CONTROLLED BY TRAFFIC SIGNALS WHICH ARE INTERCONNECTED WITH THE RAILROAD WARNING SIGNALS.
- EXTEND PAVEMENT MARKINGS TO THE INTERSECTION ONLY WHERE NEAR-SIDE TRAFFIC SIGNALS ARE USED.
- WHERE THE ANGLE BETWEEN THE DIAGONAL PAVEMENT MARKINGS AND THE TRACK WOULD BE LESS THAN 20°, THE PAVEMENT MARKINGS SHOULD BE PLACED IN THE OPPOSITE DIRECTION FROM THAT SHOWN.



Note: All dimensions are in INCHES (millimeters) unless otherwise shown.

FILE NAME =	USER NAME = ppersonbr	DESIGNED -	REVISED - 11/06
ci:\pw\work\p\idot\ppersonbr\d0249274\0578874-sh1-details.dgn		DRAWN -	REVISED - 09/2009 - KJT
	PLOT SCALE = 40.0000' / in.	CHECKED -	REVISED -
	PLOT DATE = 1/27/2012	DATE -	REVISED -

STATE OF ILLINOIS
DEPARTMENT OF TRANSPORTATION

PAVEMENT MARKING AND MARKERS
(RURAL & URBAN APPLICATIONS)

SCALE: SHEET NO. 4 OF 4 SHEETS STA. TO STA.

DISTRICT 5 DETAIL NO. 7800AAAA

F.A.S. RTE.	SECTION	COUNTY	TOTAL SHEETS	SHEET NO.
533	(10-34,HB-5,106)RS-1	CHAMPAIGN	26	26
FED. ROAD DIST. NO. ILLINOIS FED. AID PROJECT			CONTRACT NO. 70874	