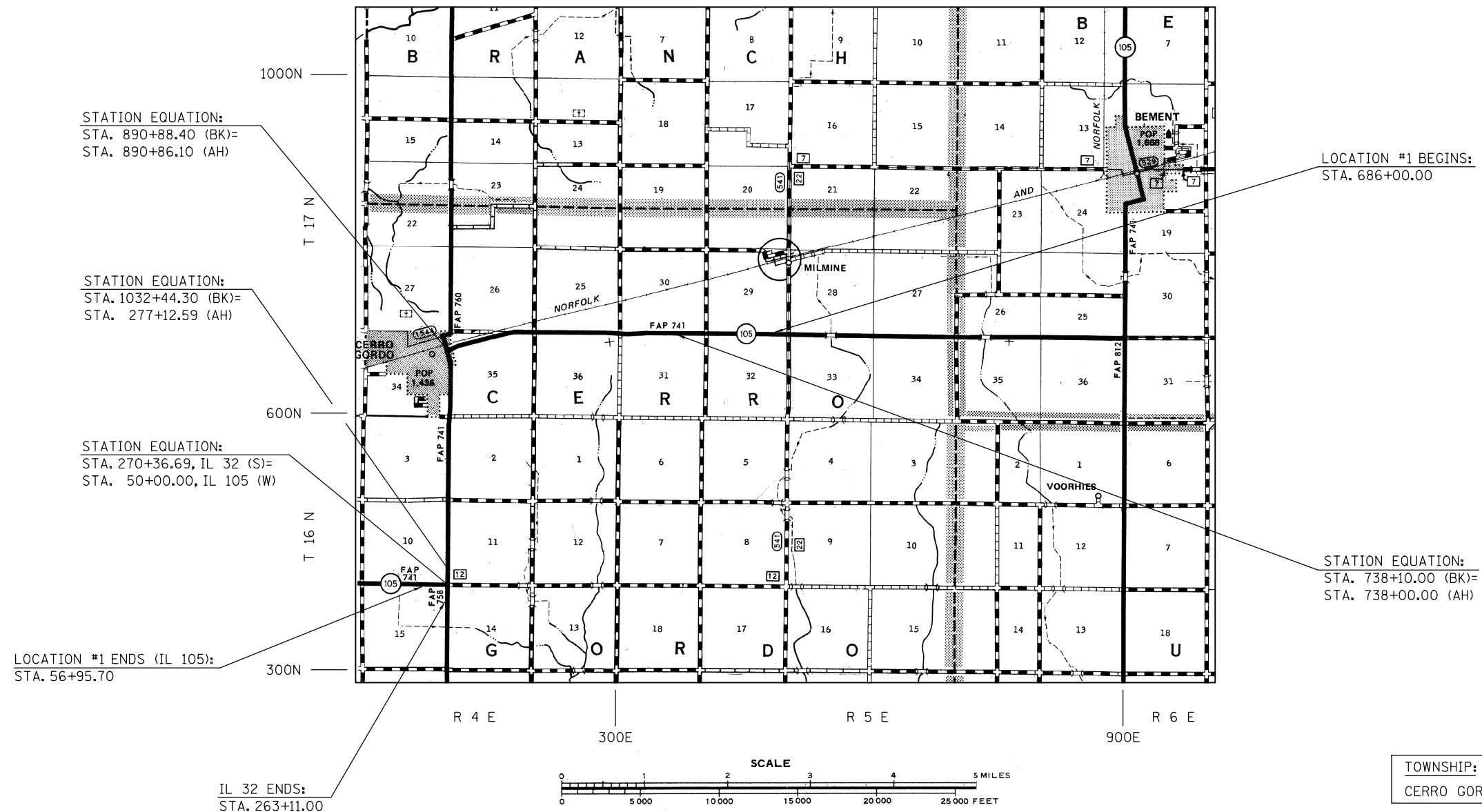


LOCATION MAP #1

F.A.P. ROUTE 741 (IL 105) FROM IL 32 TO 3.75 MILE EAST OF CERRO GORDO

PIATT COUNTY / RURAL 2-LANE



• D5 CRACK & JOINT SEAL 2012-1
 •• DEWITT, MCLEAN, PIATT

FILE NAME =	USER NAME = ppersonbr	DESIGNED - GAE	REVISED -	STATE OF ILLINOIS DEPARTMENT OF TRANSPORTATION	LOCATION MAP #1			F.A. RTE.	SECTION	COUNTY	TOTAL SHEETS	SHEET NO.	
et:\pw\work\p\dot\personbr\d0287939\05	0932-sh1-loc.meps.dgn	DRAWN - BBP	REVISED -		SCALE: NONE	SHEET 1	OF 1	SHEETS	STA.	TO STA.	••	36	3
	PLOT SCALE = 40.0000' / in.	CHECKED -	REVISED -										
	PLOT DATE = 1/25/2012	DATE - 11/26/11	REVISED -										
ILLINOIS FED. AID PROJECT											CONTRACT NO. 70932		