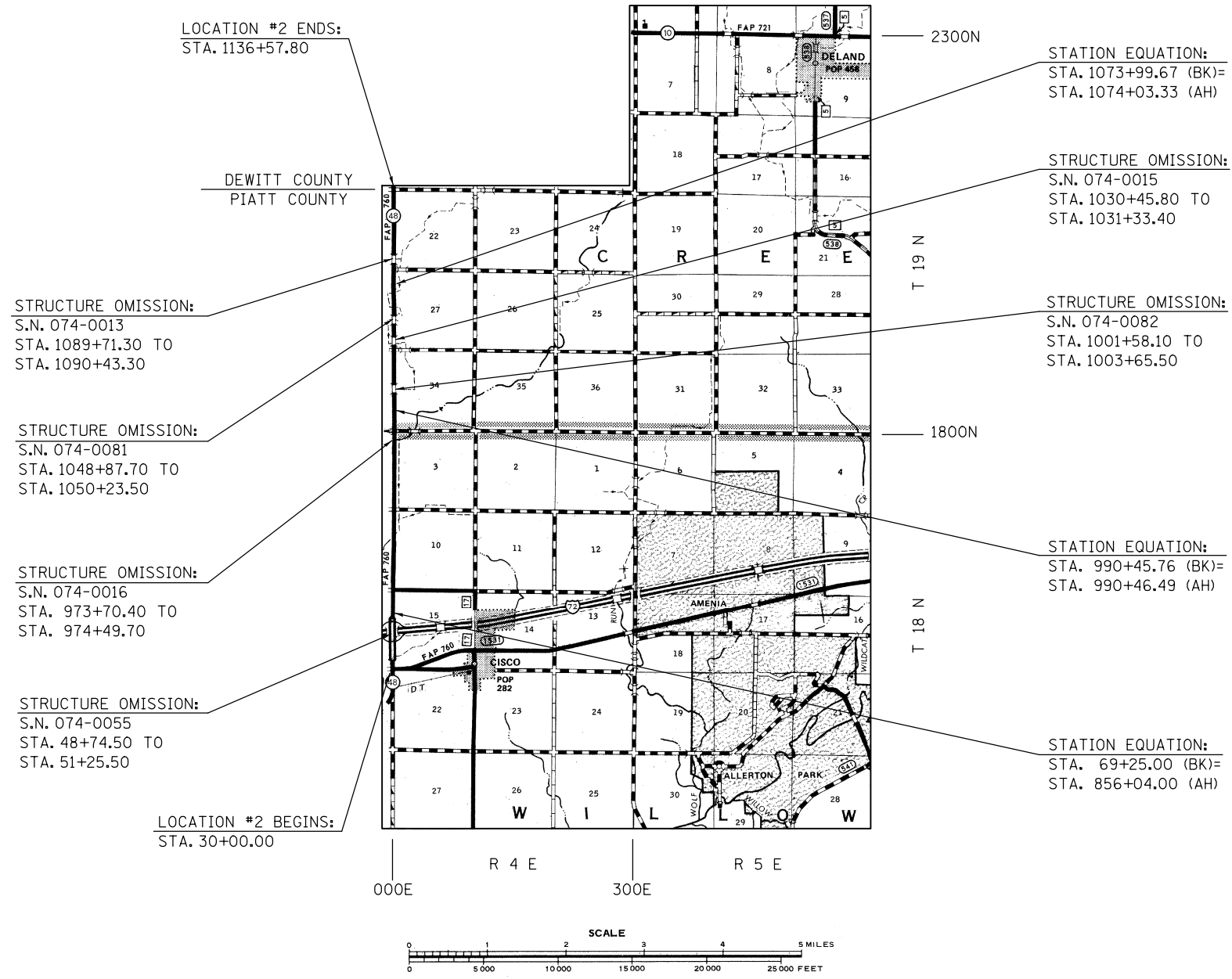


# LOCATION MAP #2

## F.A.P. ROUTE 760 (IL 48) FROM IL 32 TO DEWITT COUNTY LINE

### PIATT COUNTY / RURAL 2-LANE



**GROSS LENGTH OF LOCATION #2 = 31,974.41 FT. = 6.056 MILES**  
**NET LENGTH OF LOCATION #2 = 31,141.31 FT. = 5.898 MILES**

• D5 CRACK & JOINT SEAL 2012-1  
•• DEWITT, MCLEAN, PIATT

FILE NAME =	USER NAME = ppersonbr	DESIGNED - GAE	REVISED -	<b>STATE OF ILLINOIS DEPARTMENT OF TRANSPORTATION</b>	<b>LOCATION MAP #2</b>				F.A. RTE.	SECTION	COUNTY	TOTAL SHEETS	SHEET NO.
et:\pw\work\p\idot\ppersonbr\d0287939\05	0932-sh1-loc.meps.dgn	DRAWN - BBP	REVISED -		SCALE: NONE	SHEET 1	OF 1	SHEETS	STA.	TO STA.	••	36	4
	PLOT SCALE = 40.0000' / in.	CHECKED -	REVISED -										
	PLOT DATE = 1/25/2012	DATE - 11/26/11	REVISED -										
ILLINOIS FED. AID PROJECT											CONTRACT NO. 70932		