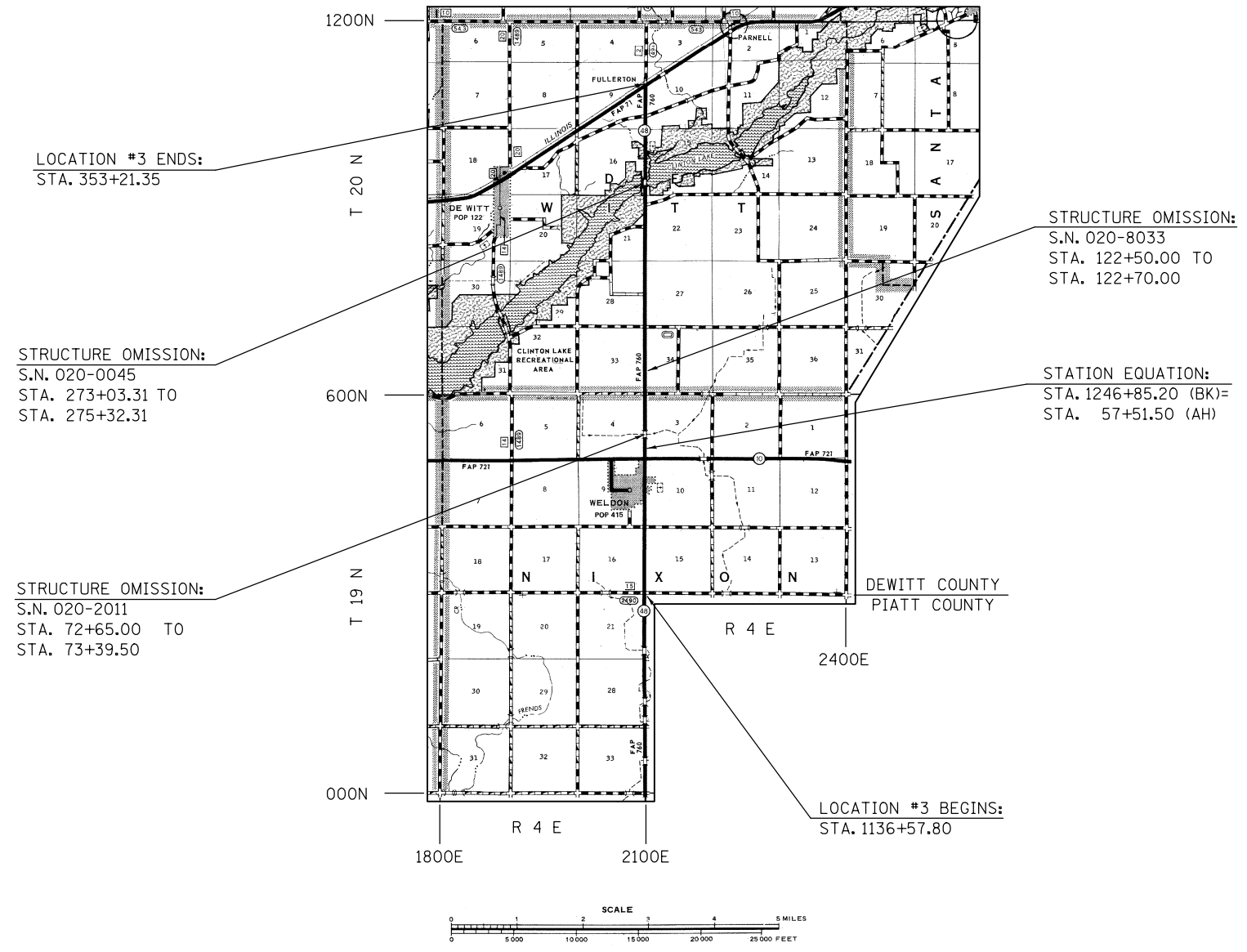


# LOCATION MAP #3

## F.A.P. ROUTE 760 (IL 48) FROM PIATT COUNTY LINE TO IL 54

### DEWITT COUNTY / RURAL 2-LANE



STRUCTURE OMISSION:  
S.N. 020-0045  
STA. 273+03.31 TO  
STA. 275+32.31

STRUCTURE OMISSION:  
S.N. 020-2011  
STA. 72+65.00 TO  
STA. 73+39.50

STRUCTURE OMISSION:  
S.N. 020-8033  
STA. 122+50.00 TO  
STA. 122+70.00

STATION EQUATION:  
STA. 1246+85.20 (BK)=  
STA. 57+51.50 (AH)

LOCATION #3 BEGINS:  
STA. 1136+57.80

TOWNSHIP:  
DEWITT, NIXON

**GROSS LENGTH OF LOCATION #3 = 40,597.25 FT. = 7.689 MILES**  
**NET LENGTH OF LOCATION #3 = 40,273.75 FT. = 7.628 MILES**

FILE NAME =	USER NAME = piersonbr	DESIGNED - GAE	REVISED -	<b>STATE OF ILLINOIS DEPARTMENT OF TRANSPORTATION</b>	<b>LOCATION MAP #3</b>			F.A. RTE.	SECTION	COUNTY	TOTAL SHEETS	SHEET NO.	
	et:\pwork\pwork\piersonbr\d0287939\0520932-sh1-loc.maps.dgn	DRAWN - BBP	REVISED -		SCALE: NONE	SHEET 1	OF 1	SHEETS	STA.	TO STA.	• D5 CRACK & JOINT SEAL 2012-1	36	5
	PLOT SCALE = 40.0000' / in.	CHECKED -	REVISED -		CONTRACT NO. 70932								
	PLOT DATE = 1/25/2012	DATE - 11/26/11	REVISED -		ILLINOIS FED. AID PROJECT								