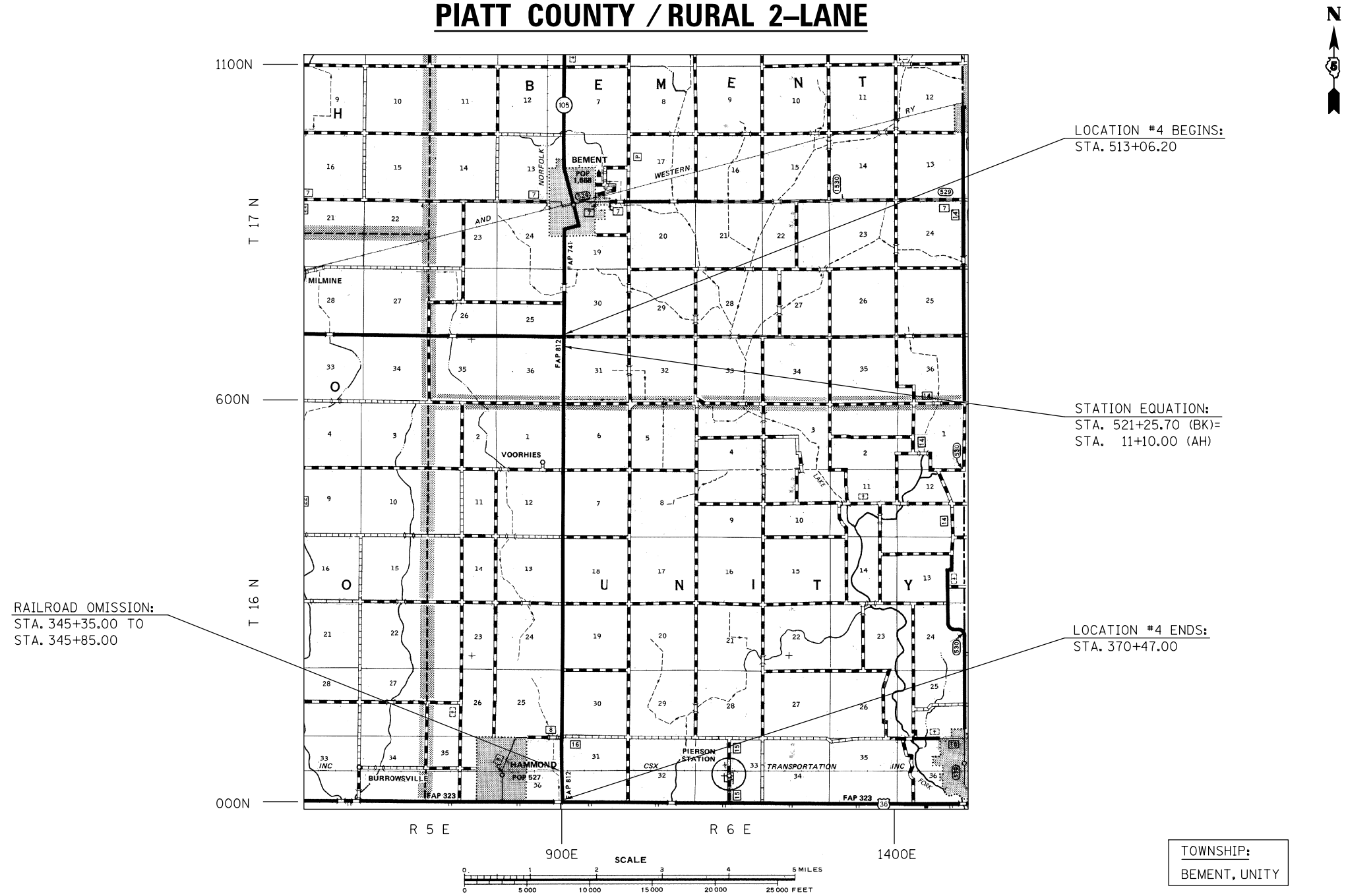


LOCATION MAP #4

F.A.P. ROUTE 812 (BEMENT-HAMMOND ROAD) FROM IL 105 TO U.S. 36

PIATT COUNTY / RURAL 2-LANE



• D5 CRACK & JOINT SEAL 2012-1
 •• DEWITT, MCLEAN, PIATT

FILE NAME =	USER NAME = piersonbr	DESIGNED - GAE	REVISED -	STATE OF ILLINOIS DEPARTMENT OF TRANSPORTATION	LOCATION MAP #4			F.A. RTE.	SECTION	COUNTY	TOTAL SHEETS	SHEET NO.	
et:\pw\work\p\dot\piersonbr\d0287939\05	0932-sh1-loc.maps.dgn	DRAWN - BBP	REVISED -		SCALE: NONE	SHEET 1	OF 1	SHEETS	STA.	TO STA.	••	36	6
	PLOT SCALE = 40.0000' / in.	CHECKED -	REVISED -		CONTRACT NO. 70932								
	PLOT DATE = 1/25/2012	DATE - 11/26/11	REVISED -		ILLINOIS FED. AID PROJECT								