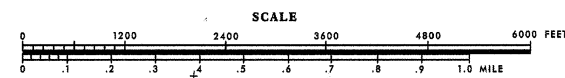
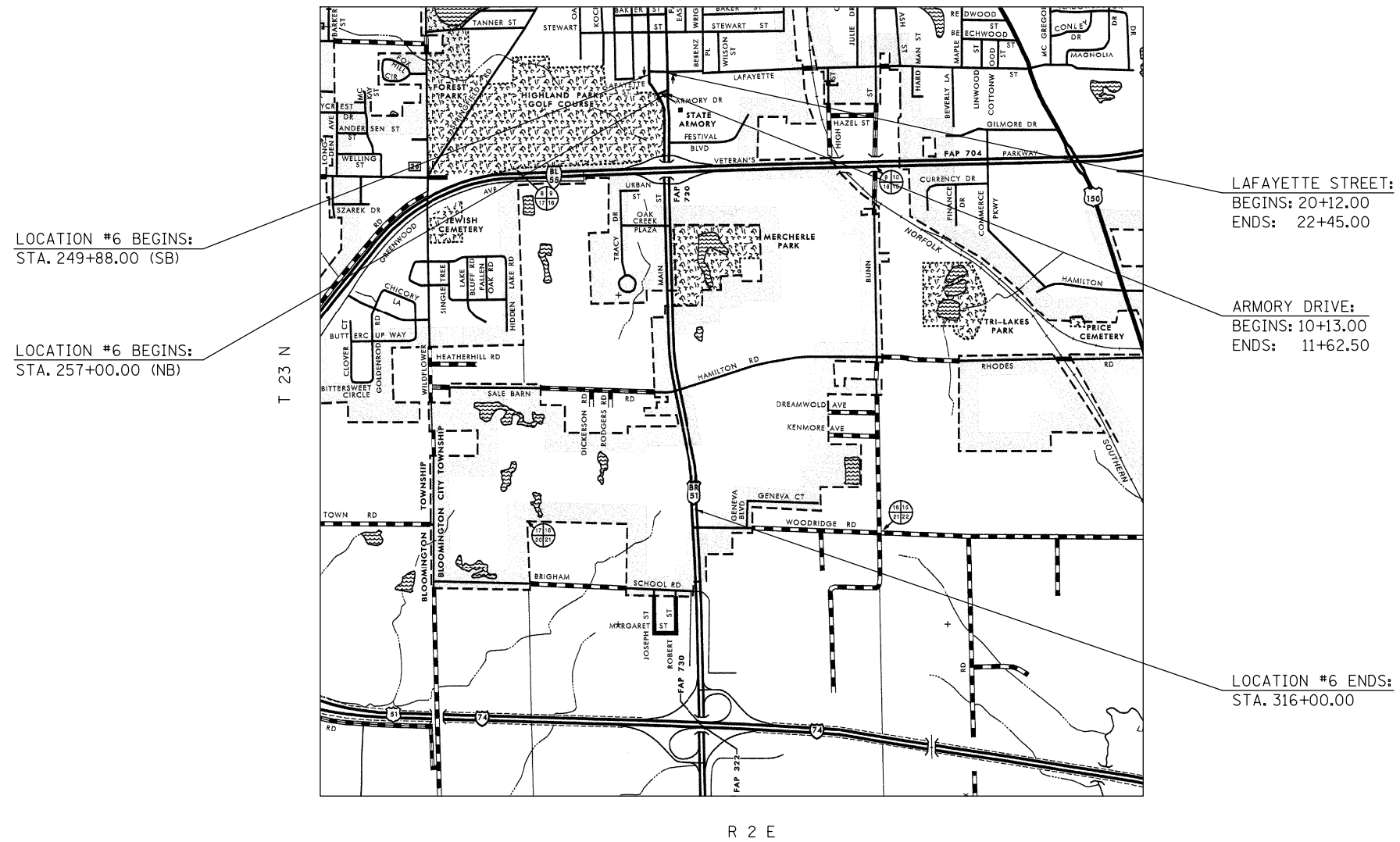


LOCATION MAP #6

F.A.P. ROUTE 730 (U.S. 51 BUSINESS) FROM LAFAYETTE ST. TO WOODRIDGE RD. IN BLOOMINGTON

MCLEAN COUNTY / URBAN 4-LANE



TOWNSHIP:
BLOOMINGTON

GROSS LENGTH OF LOCATION #6 = 6,994.50 FT. = 1.325 MILES
NET LENGTH OF LOCATION #6 = 6,994.50 FT. = 1.325 MILES

• D5 CRACK & JOINT SEAL 2012-1
•• DEWITT, MCLEAN, PIATT

FILE NAME = c:\pwork\pwork\piersonbr\d0287939\0570932-sh1-loc.maps.dgn	USER NAME = piersonbr	DESIGNED - GAE	REVISED -	STATE OF ILLINOIS DEPARTMENT OF TRANSPORTATION	LOCATION MAP #6			F.A. RTE.	SECTION	COUNTY	TOTAL SHEETS	SHEET NO.
	PLOT SCALE = 40.0000' / in.	CHECKED -	REVISED -					VAR.	*	**	36	8
PLOT DATE = 1/25/2012	DATE - 11/26/11	REVISED -	REVISED -	SCALE: NONE	SHEET 1	OF 1 SHEETS	STA.	TO STA.	CONTRACT NO. 70932			
											ILLINOIS FED. AID PROJECT	