

**TYPICAL SECTION #6**

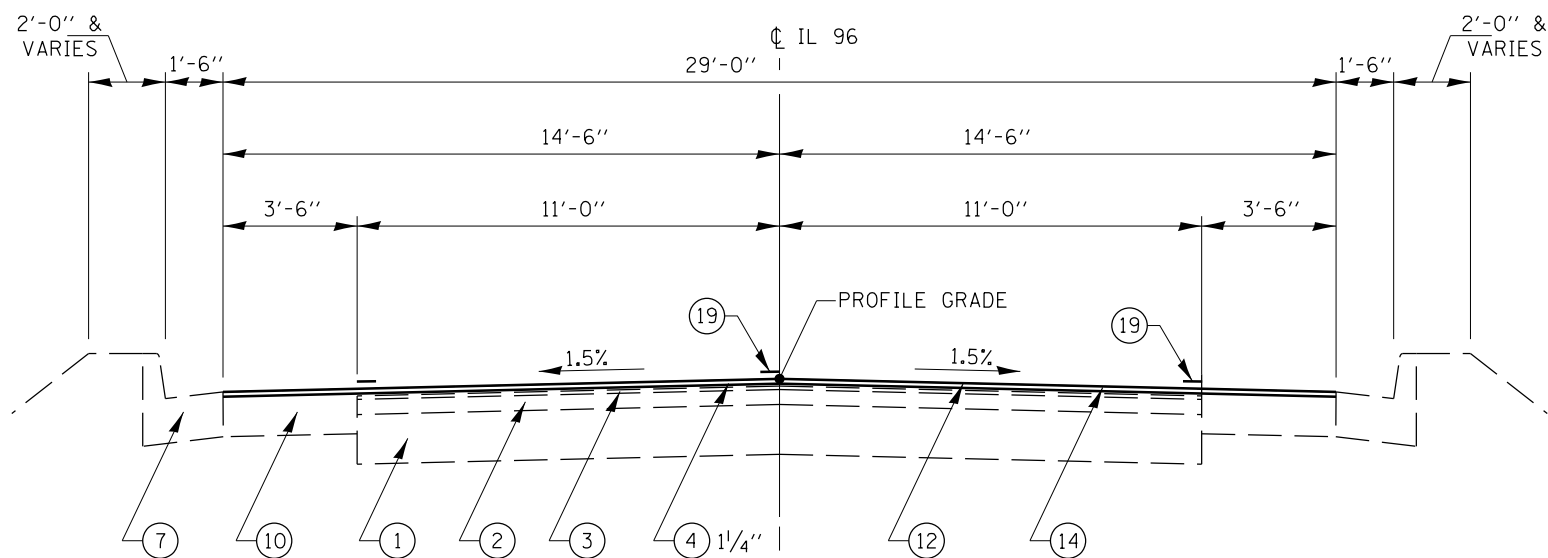
STA. 1328+00.00 TO STA. 1334+95.16  
 BRIDGE OMISSION STA. 1334+95.16 TO STA. 1340+29.50  
 STA. 1340+29.50 TO STA. 1348+00.00

**\* NOTE :**

WIDTH OF EXISTING BASE COURSE WIDENING, 9'  
 3'-0" FROM LT. & RT. STA. 1342+50.00 TO  
 STA. 1345+00.00

**LEGEND**

- ① EXIST. CRUSHED STONE BASE WITH SURFACE TREATMENT ±10"
- ② EXIST. HMA SURFACE VARIABLE DEPTH
- ③ EXIST. LEVELING BINDER VARIABLE DEPTH
- ④ EXIST. HMA SURFACE COURSE 1 1/4" OR 1 1/2"
- ⑤ EXIST. HMA BASE COURSE WIDENING 9"
- ⑥ EXIST. AGGREGATE SHOULDERS
- ⑦ EXIST. COMBINATION CONCRETE CURB & GUTTER TYPE B-9.18
- ⑧ EXIST. CONCRETE GUTTER, TYPE C
- ⑨ EXIST. TYPE A GUTTER MODIFIED
- ⑩ EXIST. HMA SHOULDERS
- ⑪ PROP. HMA SURFACE REMOVAL (VARIABLE DEPTH)
- ⑫ PROP. HMA SURFACE REMOVAL 1 1/2"
- ⑬ PROP. LEVELING BINDER, MACHINE METHOD N50 (3/4")
- ⑭ PROP. HMA SURFACE COURSE, MIX "C" N50 (1 1/2")
- ⑮ PROP. SAFETY SHOULDER 1'-0" (HMA SHOULDER 6 1/2")
- ⑯ PROP. EXCAVATING & GRADING EXISTING SHOULDERS
- ⑰ PROP. AGGREGATE SHOULDERS, TYPE B
- ⑱ PROP. SUB-BASE GRANULAR MATERIAL, TYPE B (VARIABLE DEPTH)
- ⑲ PROP. PAINT PAVEMENT MARKING 5"



**TYPICAL SECTION #5**

STA. 1307+45.00 TO STA. 1310+28.36  
 BRIDGE OMISSION STA. 1310+28.36 TO STA. 1313+82.83  
 STA. 1313+82.83 TO STA. 1316+55.00

**NOTE**

- 1. IF SUPERELEVATION EXIST THE SHOULDER SLOPES ON THE HIGH SIDE MAXIMUM BREAK - OVER SHOULD BE NO GREATER THAN 8% AND ON THE LOW SIDE SHOULDER SLOPE SHALL BE 4% OR THE SAME AS S.E. IF S.E. IS OVER 4%

FILE NAME =	USER NAME = sparksgw	DESIGNED -	REVISED -	<b>STATE OF ILLINOIS DEPARTMENT OF TRANSPORTATION</b>	<b>TYPICAL SECTIONS</b>			F.A.P. RTE.	SECTION	COUNTY	TOTAL SHEETS	SHEET NO.
et:\pw\work\p\id\sparksgw\0216263\067243-sht-typical.dgn		DRAWN -	REVISED -					304	4RS-3, BR-1	PIKE	41	15
PLOT SCALE = 40.0000' / in.		CHECKED -	REVISED -		CONTRACT NO. 72243							
PLOT DATE = Feb-07-2012 02:52:43PM		DATE -	REVISED -		SCALE:	SHEET NO.	OF SHEETS	STA.	TO STA.	ILLINOIS FED. AID PROJECT		