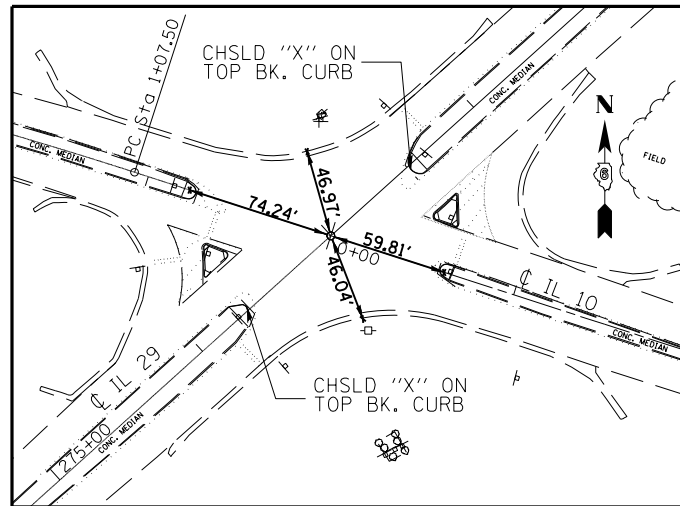
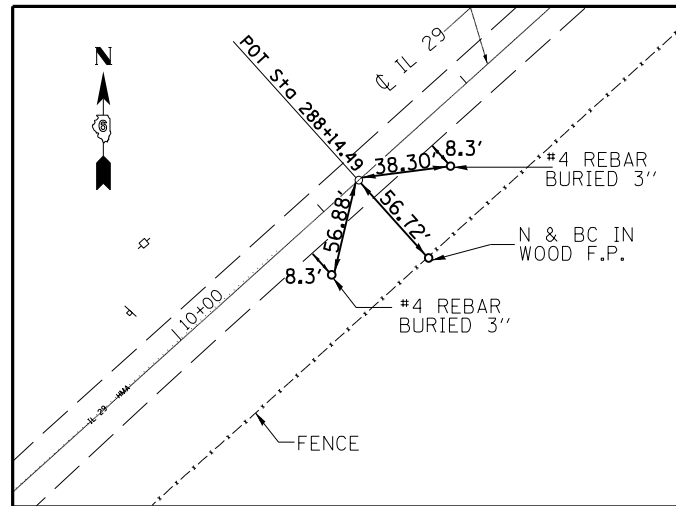


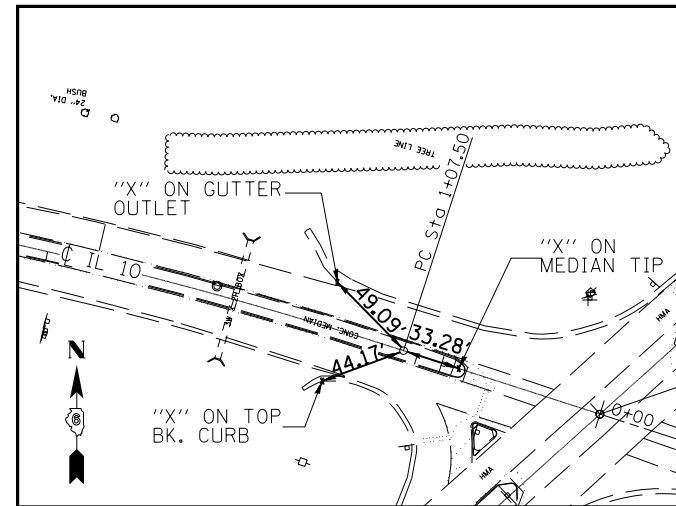
P.O.T. #17321 STA. 263+14.42
(SET P.K. NAIL & BOTTLE CAP WITH CHISELED "X")



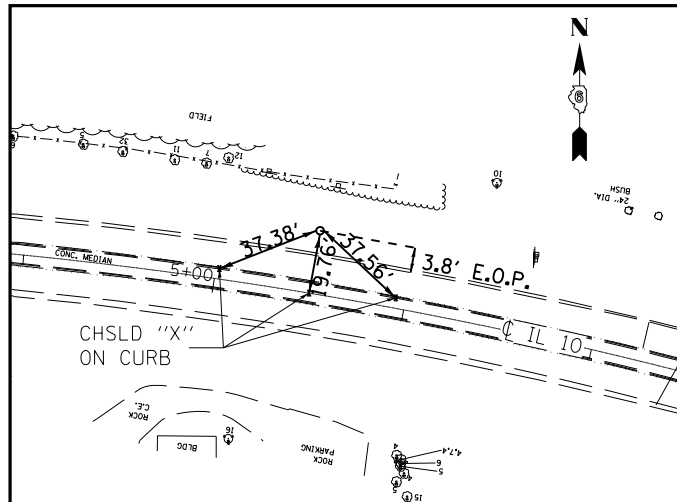
P.O.T. #412 STA. 276+90 = 0+00 E002 = E003
(SET P.K. NAIL & BOTTLE CAP WITH CHISELED "X")



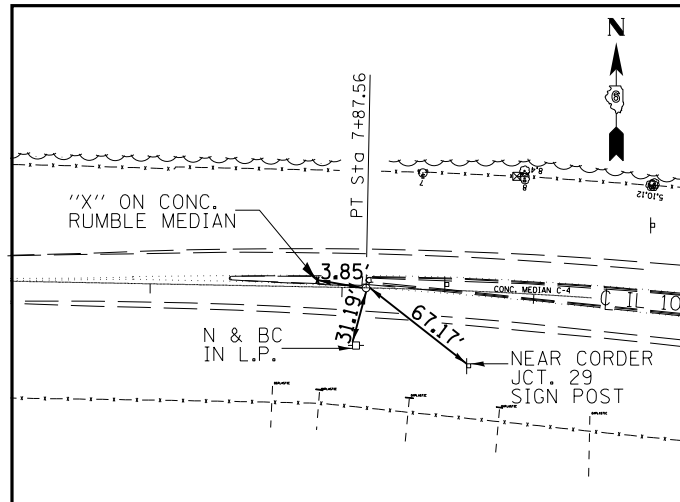
P.O.T. #17309 STA. 288+14.49
(SET P.K. NAIL & BOTTLE CAP WITH CHISELED "X")



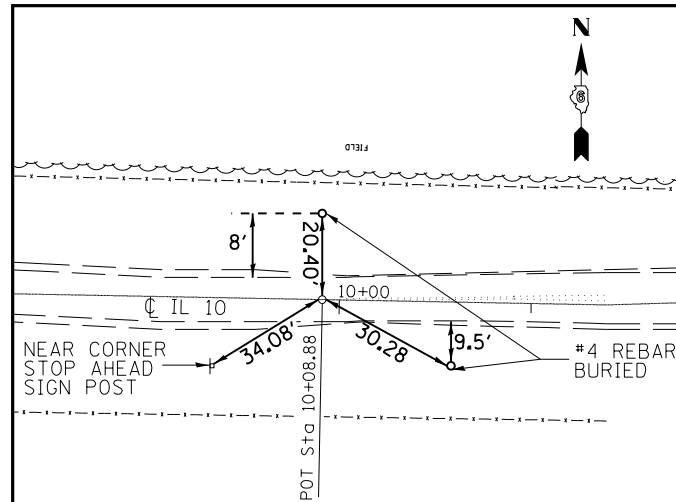
P.C. STA. 1+07.50
(SET STAR DRILL WITH CHISELED "X")



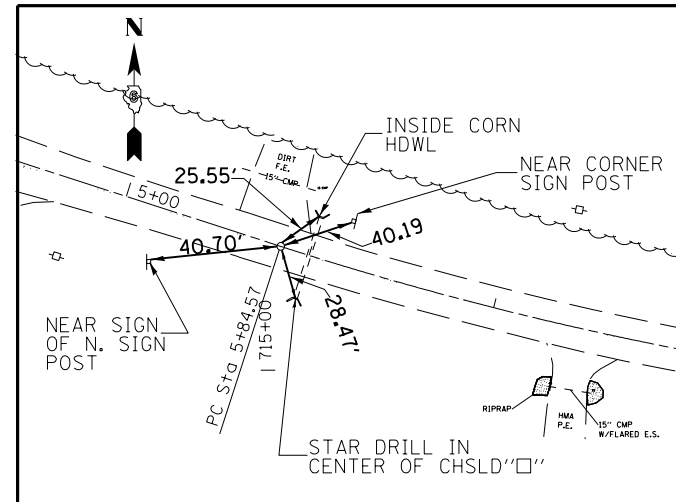
P.I. 2 STA. 4+50.00
(SET #4 REBAR WITH CAP BURIED 4")



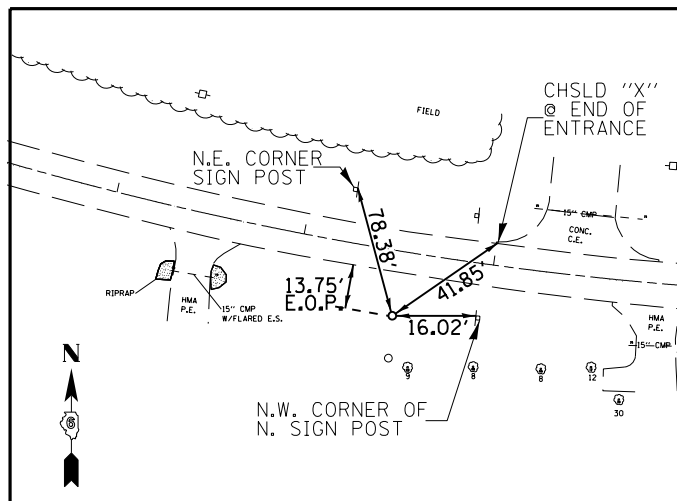
P.T. STA. 7+87.56
(SET P.K. NAIL & BOTTLE CAP WITH CHISELED "X")



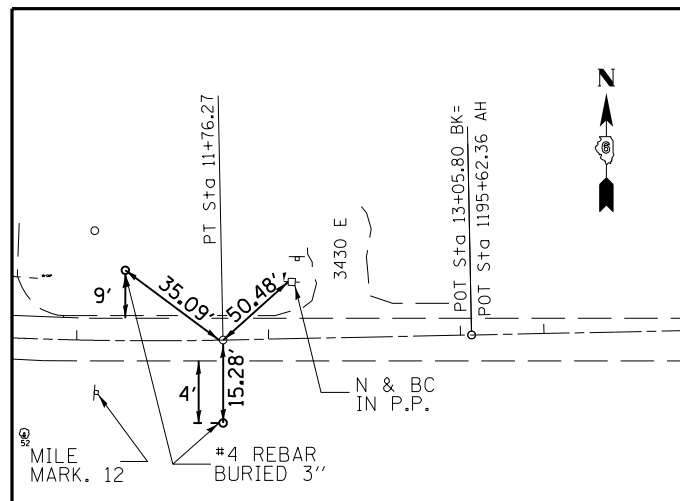
POT. STA. 10+08.88
(SET P.K. NAIL & BOTTLE CAP WITH CHISELED "X")



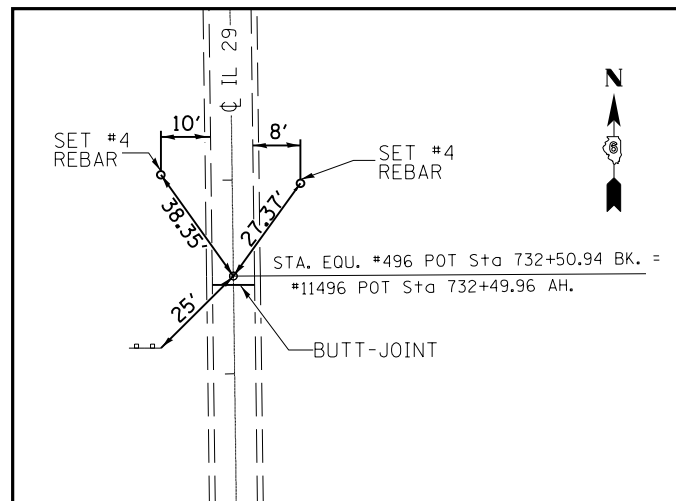
PC. STA. 5+84.57
(SET P.K. NAIL & BOTTLE CAP WITH CHISELED "X")



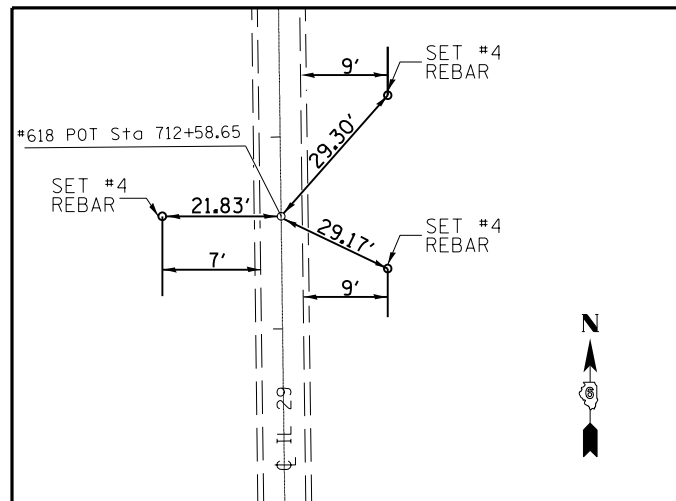
P.I. STA. 8+83.19
(SET #4 REBAR WITH CAP - BURIED 2")



PT. STA. 11+76.27
(SET P.K. NAIL & BOTTLE CAP WITH CHISELED "X")



STATION EQUATION:
STA. 732+50.94 BK. = STA. 732+49.96 AH.
(FD: BRASS DISK WITH DIMPLE)



P.C. STA. 712+58.65
(SET #4 PK NAIL SET IN CHISELED "X")

FILE NAME =	USER NAME = sparksgw	DESIGNED -	REVISED -
c:\pwwork\pwwork\sparksgw\10283522\06xxxxx-shr-genrote.dgn		DRAWN -	REVISED -
		CHECKED -	REVISED -
		DATE -	REVISED -

**STATE OF ILLINOIS
DEPARTMENT OF TRANSPORTATION**

SURVEY CROSS TIES

SCALE: SHEET 1 OF 4 SHEETS STA. TO STA.

F.A.P. RFE.	SECTION	COUNTY	TOTAL SHEETS	SHEET NO.
658	.	**	106	26
CONTRACT NO. 72F04				
ILLINOIS FED. AID PROJECT				

(EIRS-4, GIRS-61) & (FIRS-3, 1-1)
** MASON/MENARD