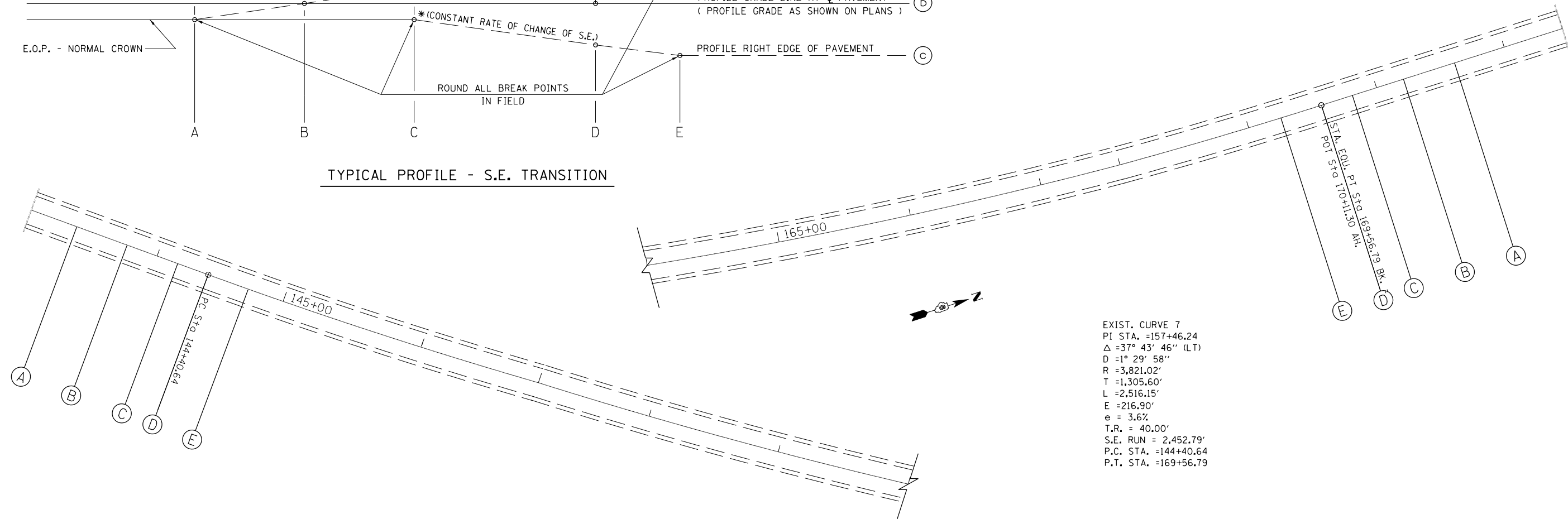
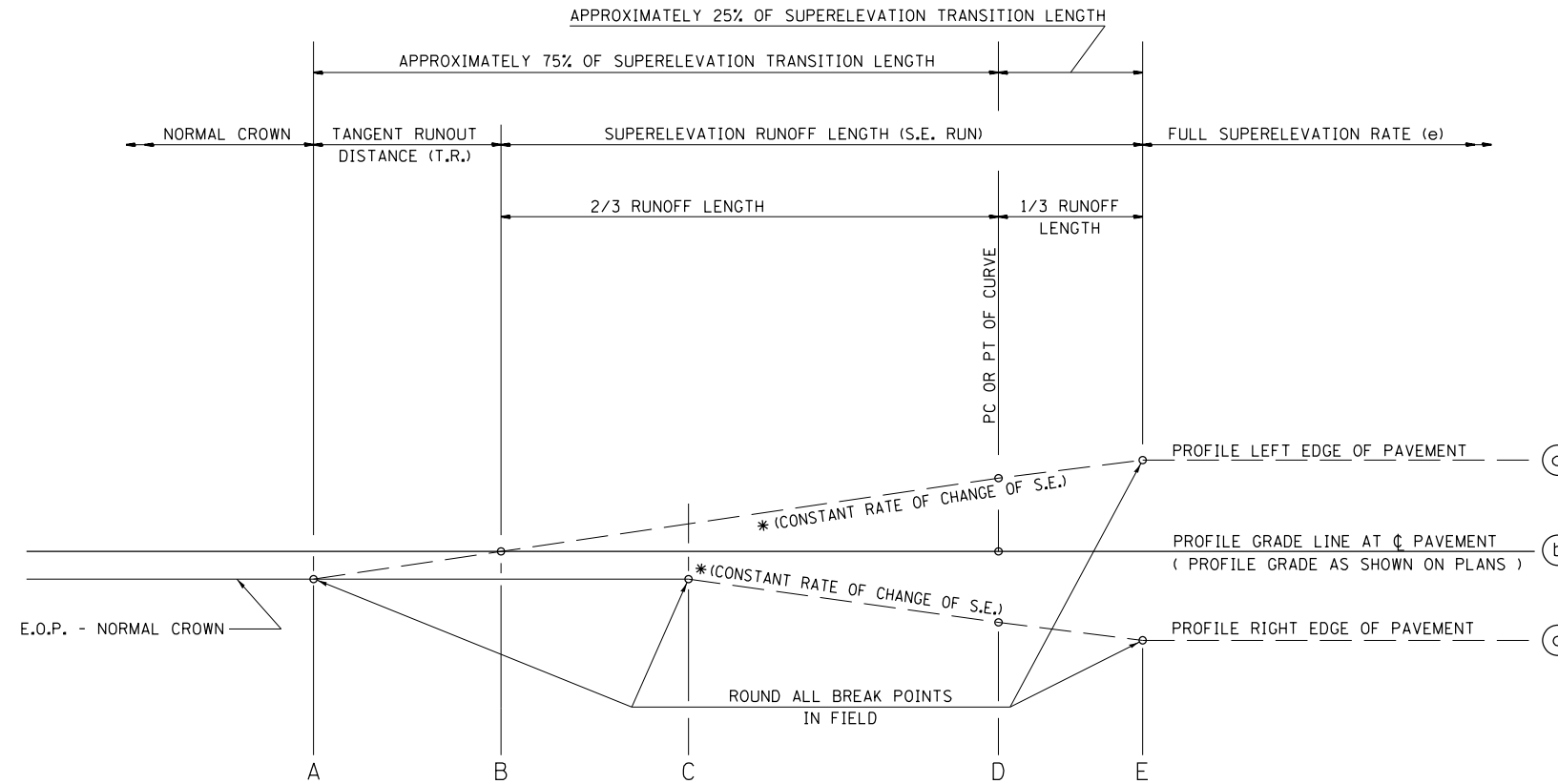
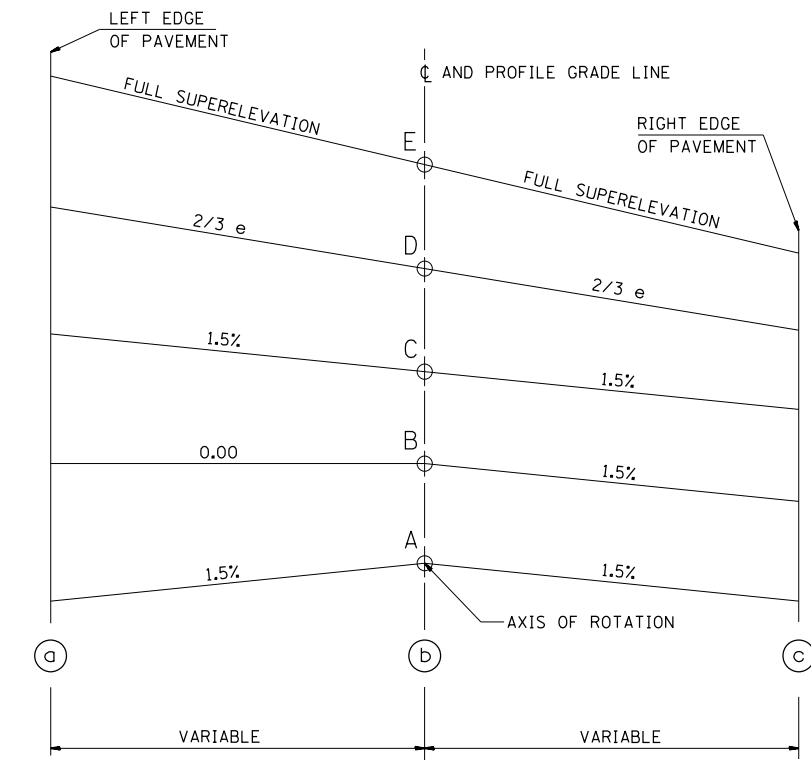


CURVE NO.	e	A	B	C	D	E	TRANSITION
7	3.60%	Sta. 143+36.32	Sta. 143+76.32	Sta. 144+16.32	Sta. 144+40.64	Sta. 144+72.32	TRANS. IN
		Sta. 170+61.11	Sta. 170+21.11	Sta. 169+81.11	Sta. 169+56.79	Sta. 169+25.11	TRANS. OUT



EXIST. CURVE 7
 PI STA. =157+46.24
 $\Delta = 37^\circ 43' 46''$ (LT)
 $D = 1^\circ 29' 58''$
 $R = 3,821.02'$
 $T = 1,305.60'$
 $L = 2,516.15'$
 $E = 216.90'$
 $e = 3.6\%$
 $T.R. = 40.00'$
 $S.E. RUN = 2,452.79'$
 $P.C. STA. = 144+40.64$
 $P.T. STA. = 169+56.79$

FILE NAME =	USER NAME = sparksgw	DESIGNED - ETJ	REVISED -
ci:\pw\work\p\idot\sparksgw\0283522\06xxxx\sh-t-detail.s.dgn		DRAWN - ETJ	REVISED -
	PLOT SCALE = 200.0000' / in.	CHECKED -	REVISED -
	PLOT DATE = Feb-27-2012 02:05:29PM	DATE -	REVISED -

STATE OF ILLINOIS
 DEPARTMENT OF TRANSPORTATION

SUPERELEVATION DETAILS

SCALE: SHEET 2 OF 7 SHEETS STA. TO STA.

F.A.P. RTE.	SECTION	COUNTY	TOTAL SHEETS	SHEET NO.
658	.	**	106	54
CONTRACT NO. 72F04				
ILLINOIS FED. AID PROJECT				

•-(E)RS-4, (G)RS-6, I & (F)RS-3, I-1
 **MASON, MENARD